

# Office of Homelessness Solutions (OHS)

---

*Coordinating citywide strategy for Oakland's unhoused residents.*

**CITY OF  
OAKLAND**

*Encampment Management  
& Abatement Team (EMAT)*

# What is the Office of Homelessness Solutions (OHS)?

---

- Announced by Mayor Lee in August 2025 to coordinate City departments under a unified strategy — bringing together prevention, shelter, services, and permanent housing pathways.
- Lead entity coordinating homelessness services across all city departments and external agencies.
- Lead coordination of Federal, State, County, City, and philanthropic funding specifically earmarked for homelessness.
- Implement the Homeless Strategic Action Plan.
- Implement the Encampment Management and Abatement Policies.

# HOMELESSNESS STRATEGIC ACTION PLAN

## Five Strategic Pillars

1



### Prevention

Stem new homelessness by preventing inflow into the system.

2



### Access & Coordination

Strengthen outreach and service coordination citywide.

3



### Encampment Management

Respond to unsheltered communities promoting health and wellness.

4



### Interim Housing

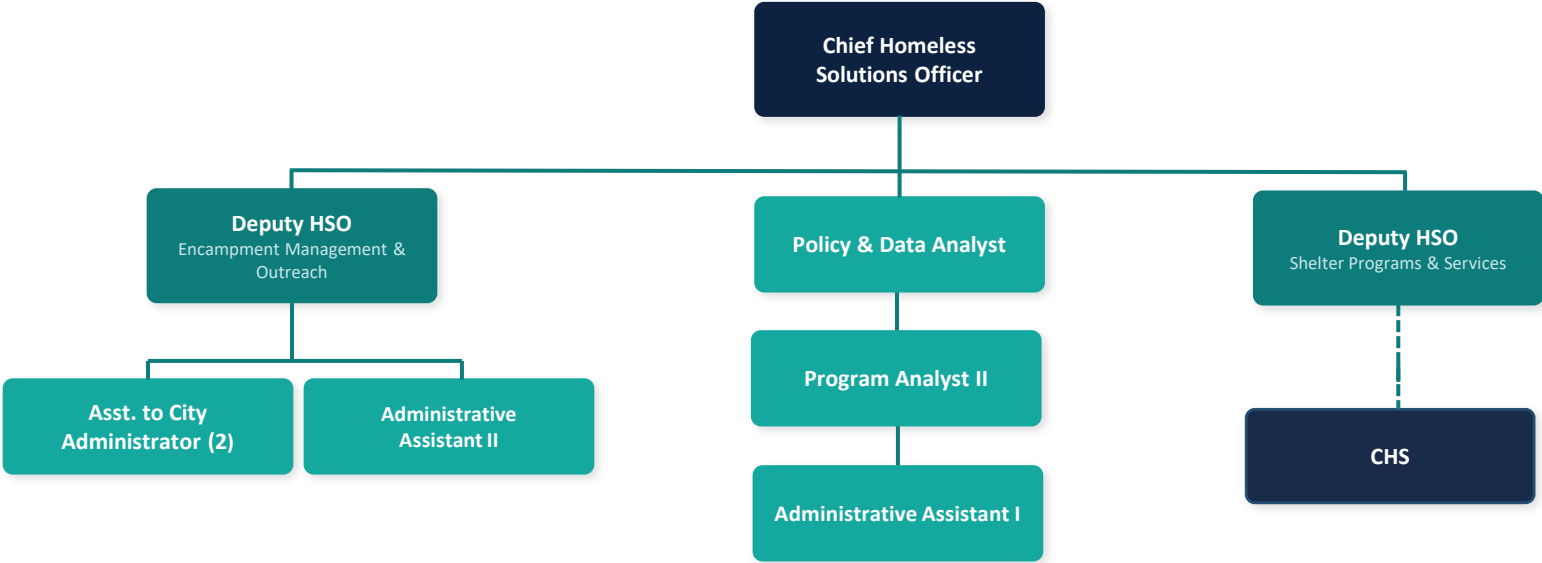
Increase accessible and equitable access to interim shelter and housing options.

5



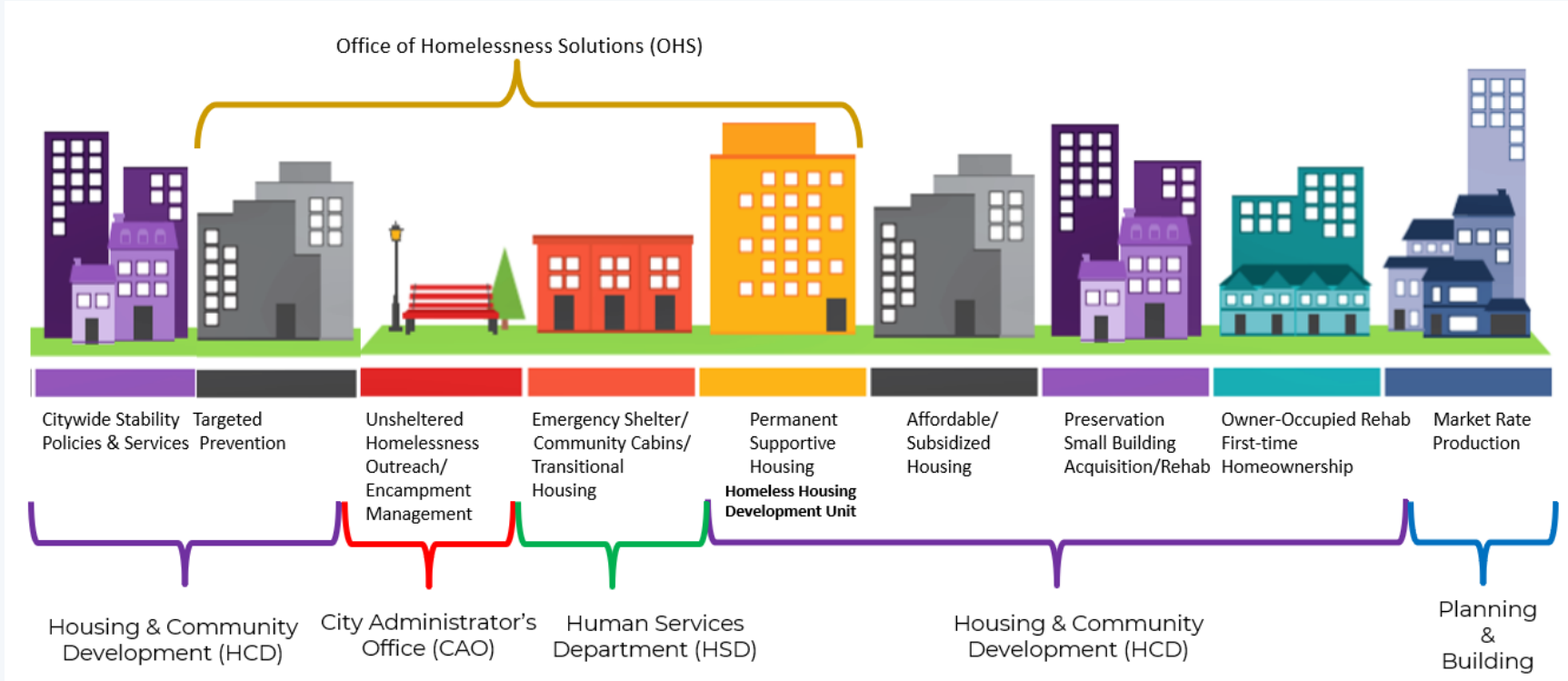
### Permanent Housing

Create deeply affordable and permanent affordable housing for all.



# CONTINUUM OF HOMELESS SERVICES

← Pathway to Stability →



OHS coordinates across departments to ensure seamless handoffs along the continuum.

# U.S. SUPREME COURT RULINGS

*Federal legal framework governing encampment enforcement*

---

## 2018

### Martin v. Boise

Banned Closures  
w/No Shelter Beds

Prohibited cities from criminally penalizing unsheltered individuals for sleeping or camping on public property when no adequate alternative shelter space was available.

## 2024

### City of Grants Pass v. Johnson

OVERTURNED  
Martin v. Boise

Ruled that local public camping bans do not violate the Eighth Amendment's Cruel and Unusual Punishments Clause — even when shelter bed availability is insufficient.

Local governments can enforce public camping and sleeping bans.

# CITY POLICY & LEGISLATION

## 2020 Encampment Management Policy

- Mitigates public health & safety impacts while balancing housed and unhoused residents' interests
- Does not criminalize homelessness
- Designates high- and low-sensitivity zones
- Formally established an interdepartmental Encampment Management Team (EMT)
- Requires racial equity lens throughout implementation
- Originally tracked ~150 encampments using Red/Yellow/Green methodology
- Lead with available shelter services

## 2026 Encampment Management and Abatement Team (EMAT) Update

### Changes:

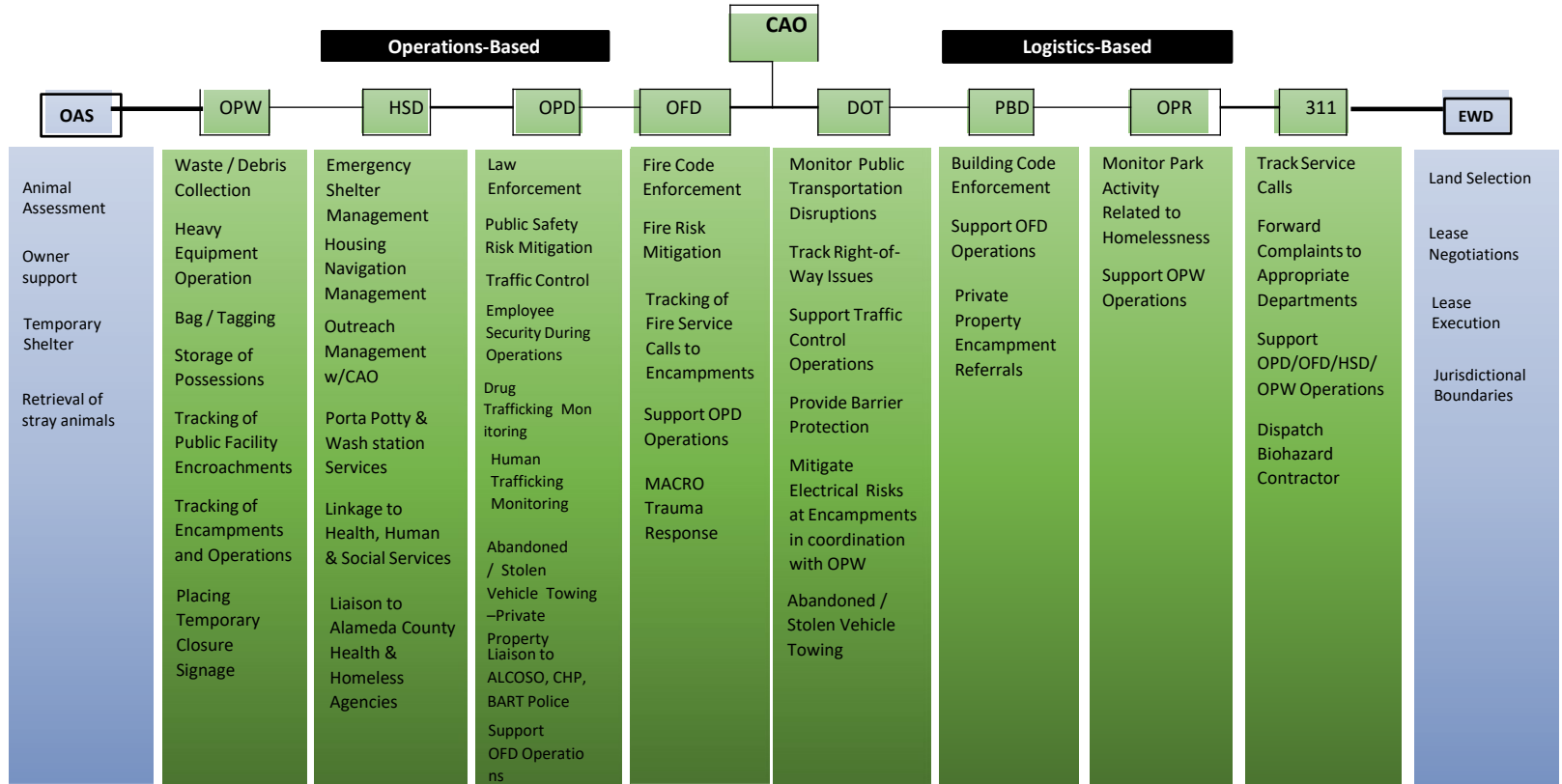
- Vehicles and RVs removed from policy scope — OPD and DOT now handle vehicle towing & CVC/OMC enforcement
- Additional Standard Operating Procedures and Dashboards
- No Return Encampment Zones
- Make reasonable efforts to lead with available shelter services

### Unchanged:

- Does not criminalize homelessness
- Miralle Settlement compliance: weather considerations, storage requirements, and notice provisions
- 7 Day Notices
- High and Low Sensitivity Zones



## Encampment Management Team Roles and Responsibilities



# ENCAMPMENT MANAGEMENT OPERATIONS

Four Actions Taken by EMAT (formerly EMT)

**01**

## **Deep Clean Actions**

Comprehensive cleaning and sanitation of encampment sites to address public health concerns.

**02**

## **Partial Closures**

Targeted removal of sections of encampments presenting immediate safety risks.

**03**

## **Full Closures**

Complete site closures with coordinated outreach, storage, and relocation support.

**04**

## **Hygiene Units & Garbage Runs**

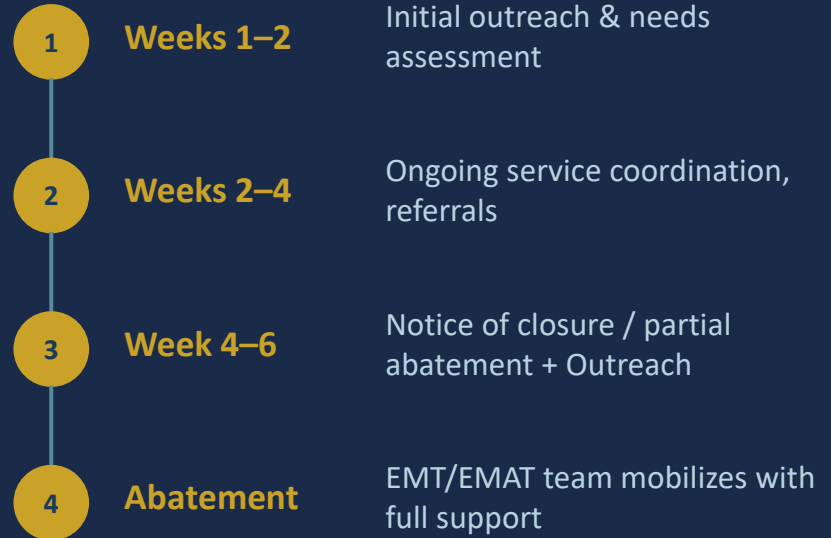
Ongoing delivery of portable hygiene services and waste collection to active sites.

# SERVICES & OUTREACH

## Operation Dignity (OD)

- **Primary outreach provider for encampment operations**
- **Manages three cabin shelter sites**
- **Outreach begins 2–6 weeks before any abatement**
- **Coordinates with CHS and county health & human service agencies**

## Outreach to Abatement Timeline



# Encampment Management and Abatement Operations

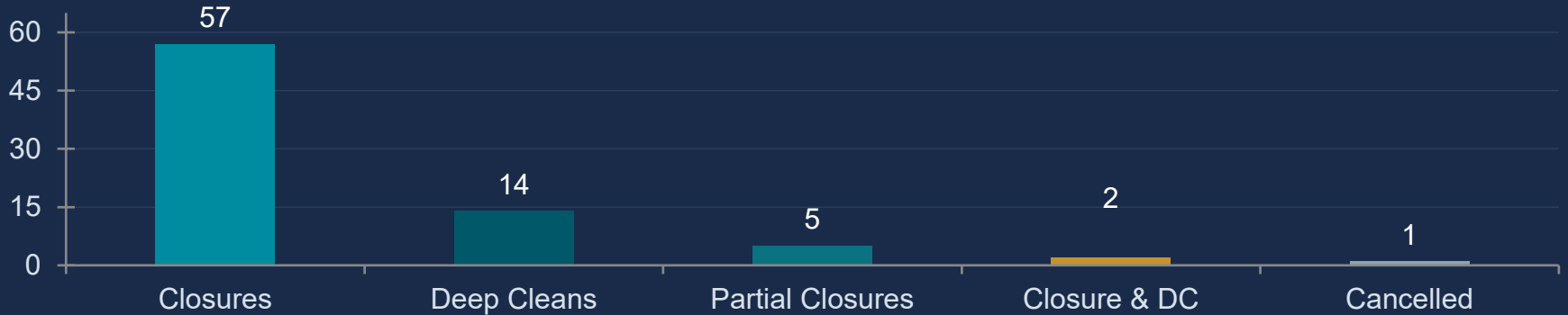
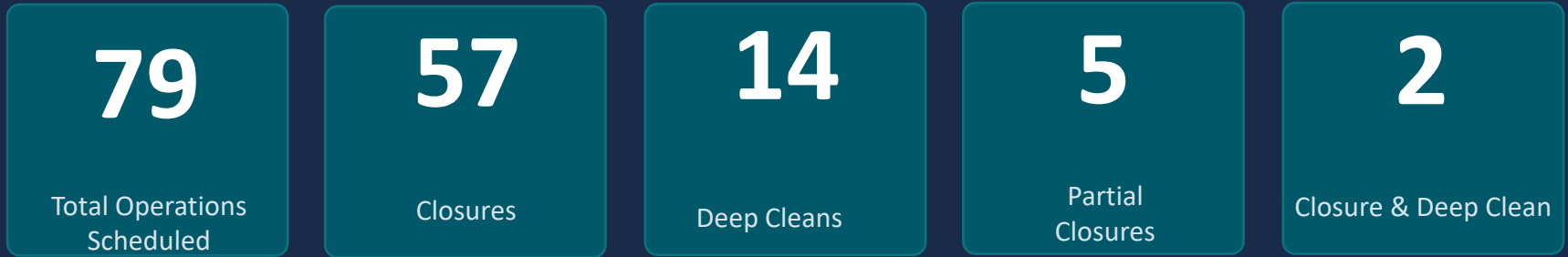
## EMAT Coordination and Priorities

- **Monthly consultation with city council offices**
- **Consultation with OFD, OPD, OPW, and OPRYD**
- **Monthly consultation with external agencies such as BART, PGE, Union Pacific Railroad, Caltrans**
- **Coordination with Eastbay Regional Parks, and Special Districts**

## EMAT Priorities

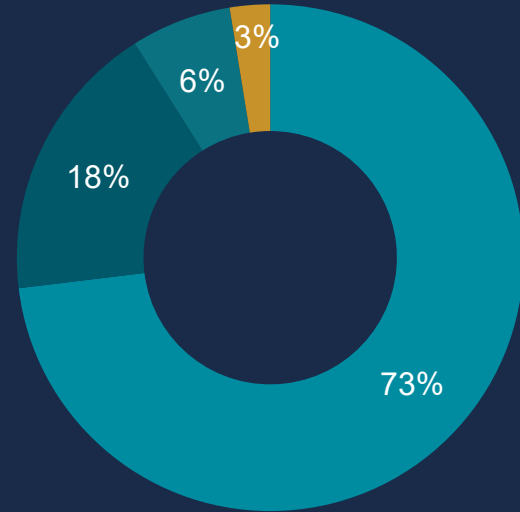
- **Citywide Construction Projects**
- **Protection of Critical Infrastructure**
- **Administrative Priorities**
- **High Sensitivity Zones**
- **Abatement of illegal or environmentally hazardous conditions**

# Year to Date – EMAT Operations



# EMT/EMAT Operation and Intervention Breakdown

Action Type	Total	% of 78
Closure	57	73.1%
Deep Clean	14	17.9%
Partial Closure	5	6.4%
Closure & Deep Clean	2	2.56%
<b>TOTAL</b>	<b>78</b>	<b>100.0%</b>

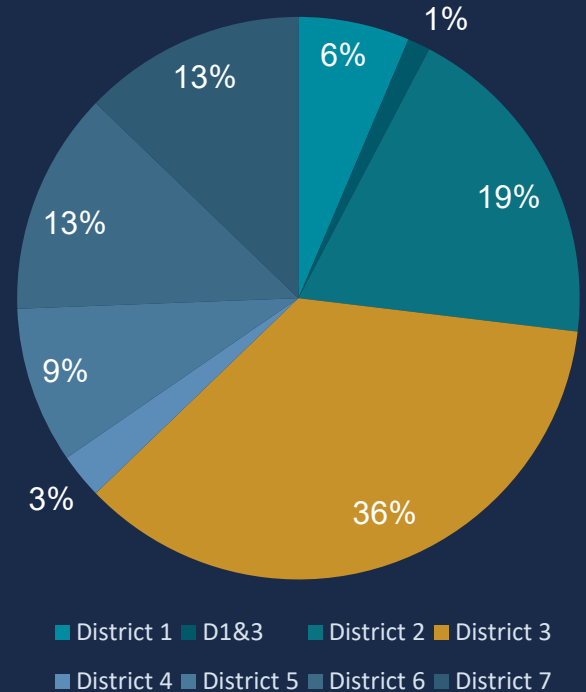
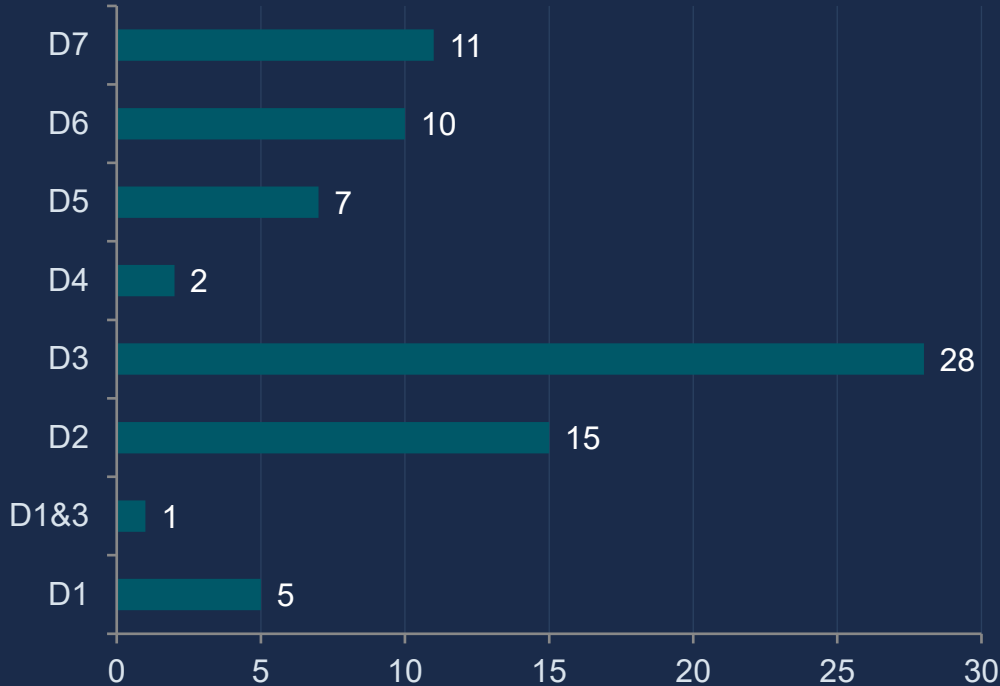


■ Closure ■ Deep Clean ■ Partial Closure ■ Other

# District Summary

District	# Operations	Actions
District 1	5	3x Closure, 2x Partial Closure
District 1 & 3	1	1x Closure
District 2	15	12x Closure, 3x Deep Clean
District 3	28	15x Closure, 1x Closure & Deep Clean, 8x Deep Clean, 1x Deep Clean & Closure, 3x Partial Closure
District 4	2	2x Closure
District 5	7	6x Closure, 1x Deep Clean
District 6	10	8x Closure, 2x Deep Clean
District 7	11	1 Cancelled, 10x Closure
<b>TOTAL</b>	<b>79</b>	

# Operations by District – Distribution



# Encampment Clean Up Ups

Before -- 31st Ave b/t International & E 12th St.



After -- 31st Ave b/t International & E 12th St.

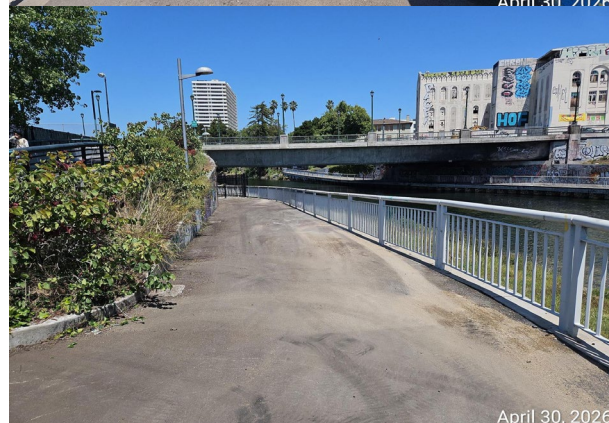


# Encampment Clean-Ups

Before -- Lake Merritt Channel



After -- Lake Merritt Channel



# Encampment Clean-Ups

Before – Old Greyhound Building/20<sup>th</sup> St and Castro



After – Old Greyhound Building/20<sup>th</sup> St and Castro

