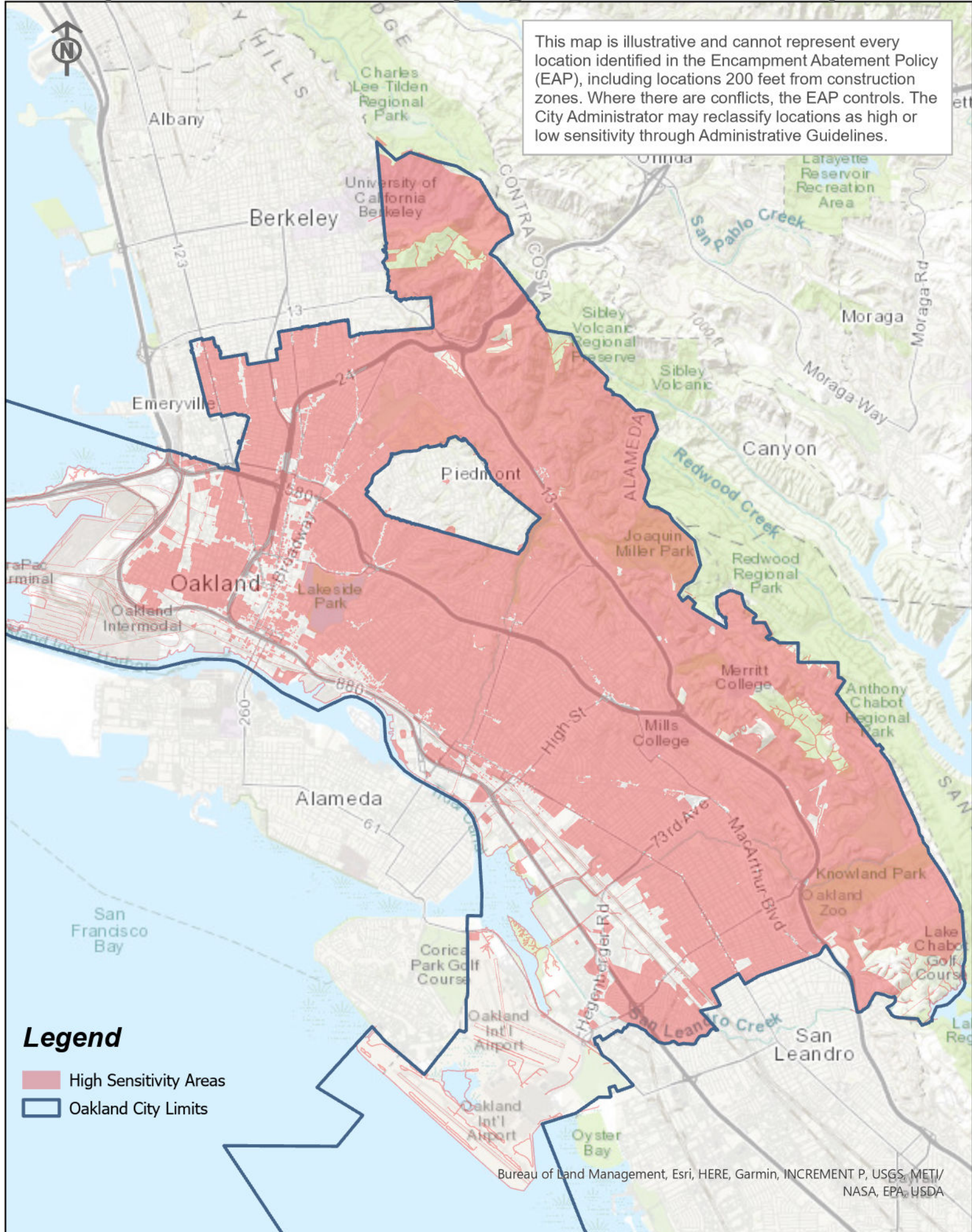


# Encampment Abatement Policy High and Low Sensitivity Areas

This map is illustrative and cannot represent every location identified in the Encampment Abatement Policy (EAP), including locations 200 feet from construction zones. Where there are conflicts, the EAP controls. The City Administrator may reclassify locations as high or low sensitivity through Administrative Guidelines.



## Legend

- High Sensitivity Areas
- Oakland City Limits