

Office of Homelessness Solutions (OHS)

Coordinating citywide strategy for Oakland's unhoused residents.

**CITY OF
OAKLAND**

*Encampment Management
& Abatement Team (EMAT)*

ENCAMPMENT MANAGEMENT OPERATIONS

Four Actions Taken by EMAT (formerly EMT)

01

Deep Clean Actions

Comprehensive cleaning and sanitation of encampment sites to address public health concerns.

02

Partial Closures

Targeted removal of sections of encampments presenting immediate safety risks.

03

Full Closures

Complete site closures with coordinated outreach, storage, and relocation support.

04

Hygiene Units & Garbage Runs

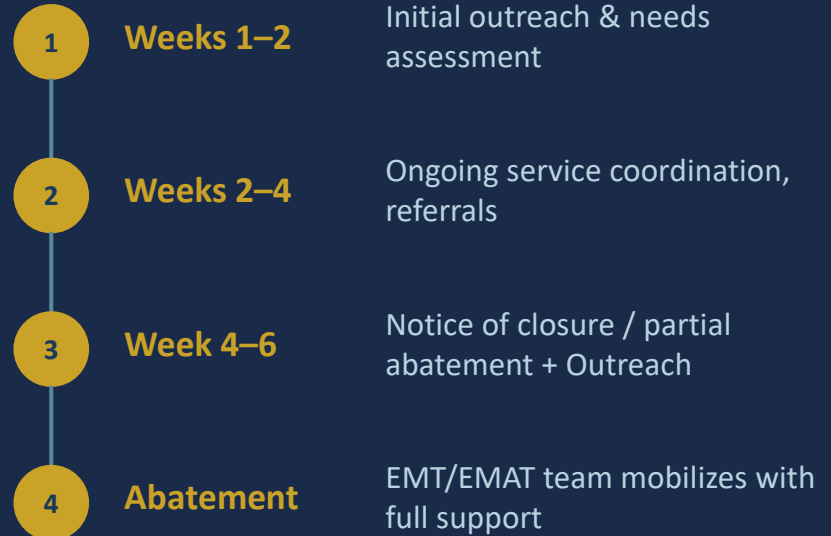
Ongoing delivery of portable hygiene services and waste collection to active sites.

SERVICES & OUTREACH

Operation Dignity (OD)

- **Primary outreach provider for encampment operations**
- **Client Referrals**
- **Manages three cabin shelter sites**
- **Outreach begins 2–6 weeks before any abatement**
- **Coordinates with CHS and county health & human service agencies**

Outreach to Abatement Timeline



Encampment Management and Abatement Operations

EMAT Coordination and Priorities

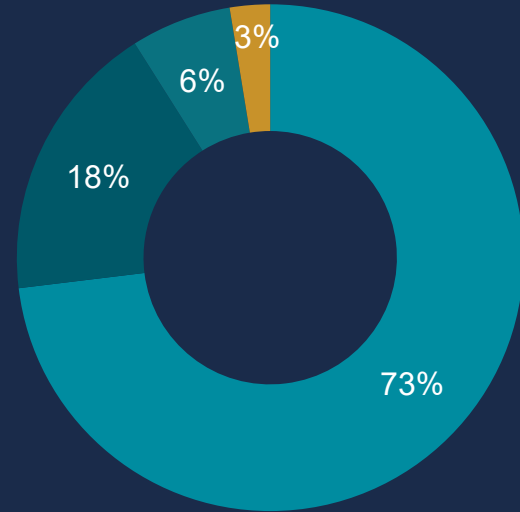
- Monthly consultation with city council offices
- Consultation with OFD, OPD, OPW, and OPRYD
- Monthly consultation with external agencies such as BART, PGE, Union Pacific Railroad, Caltrans, BCDC.
- Coordination with Eastbay Regional Parks, and Special Districts

EMAT Priorities

- Citywide Construction Projects
- Protection of Critical Infrastructure
- Administrative Priorities
- High Sensitivity Zones
- Abatement of illegal or environmentally hazardous conditions

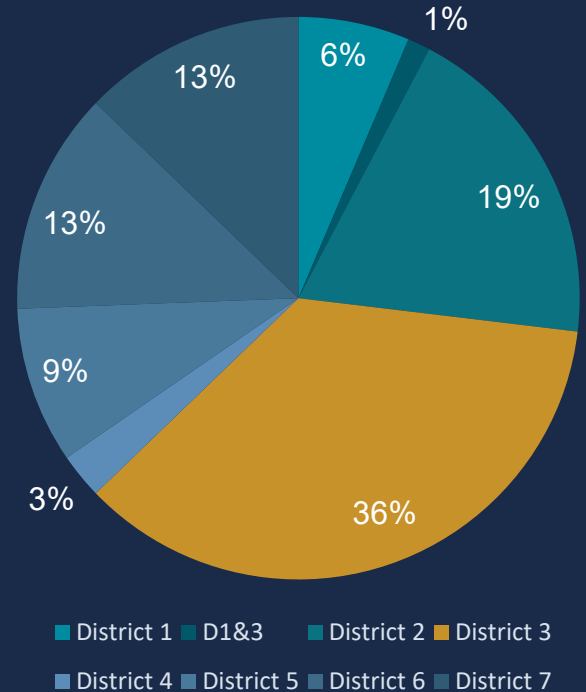
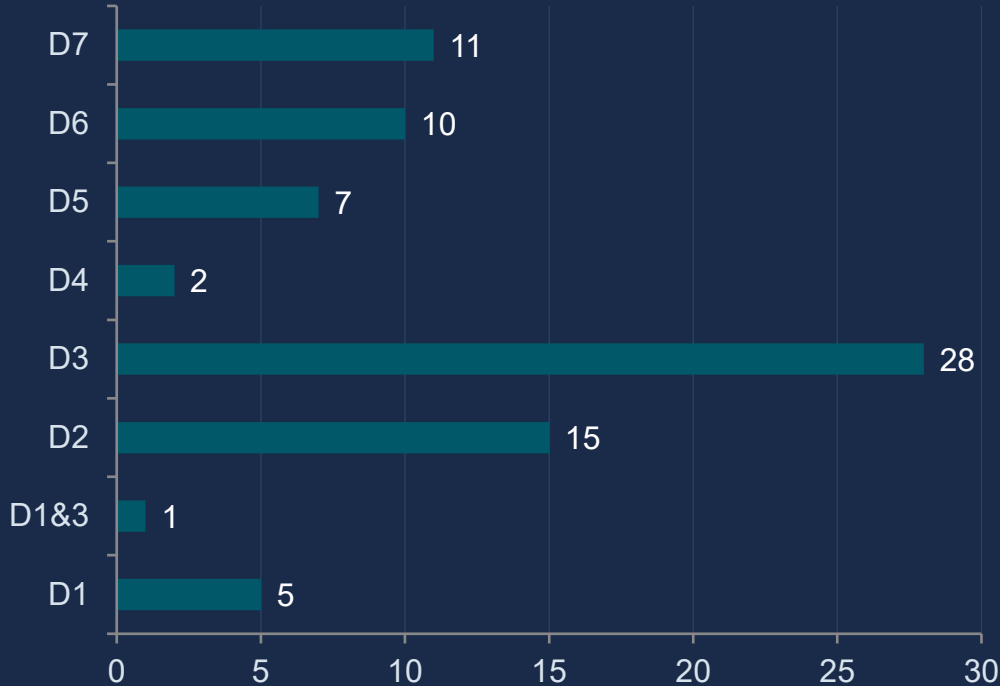
EMT/EMAT Operation and Intervention Breakdown

Action Type	Total	% of 78
Closure	57	73.1%
Deep Clean	14	17.9%
Partial Closure	5	6.4%
Closure & Deep Clean	2	2.56%
TOTAL	78	100.0%



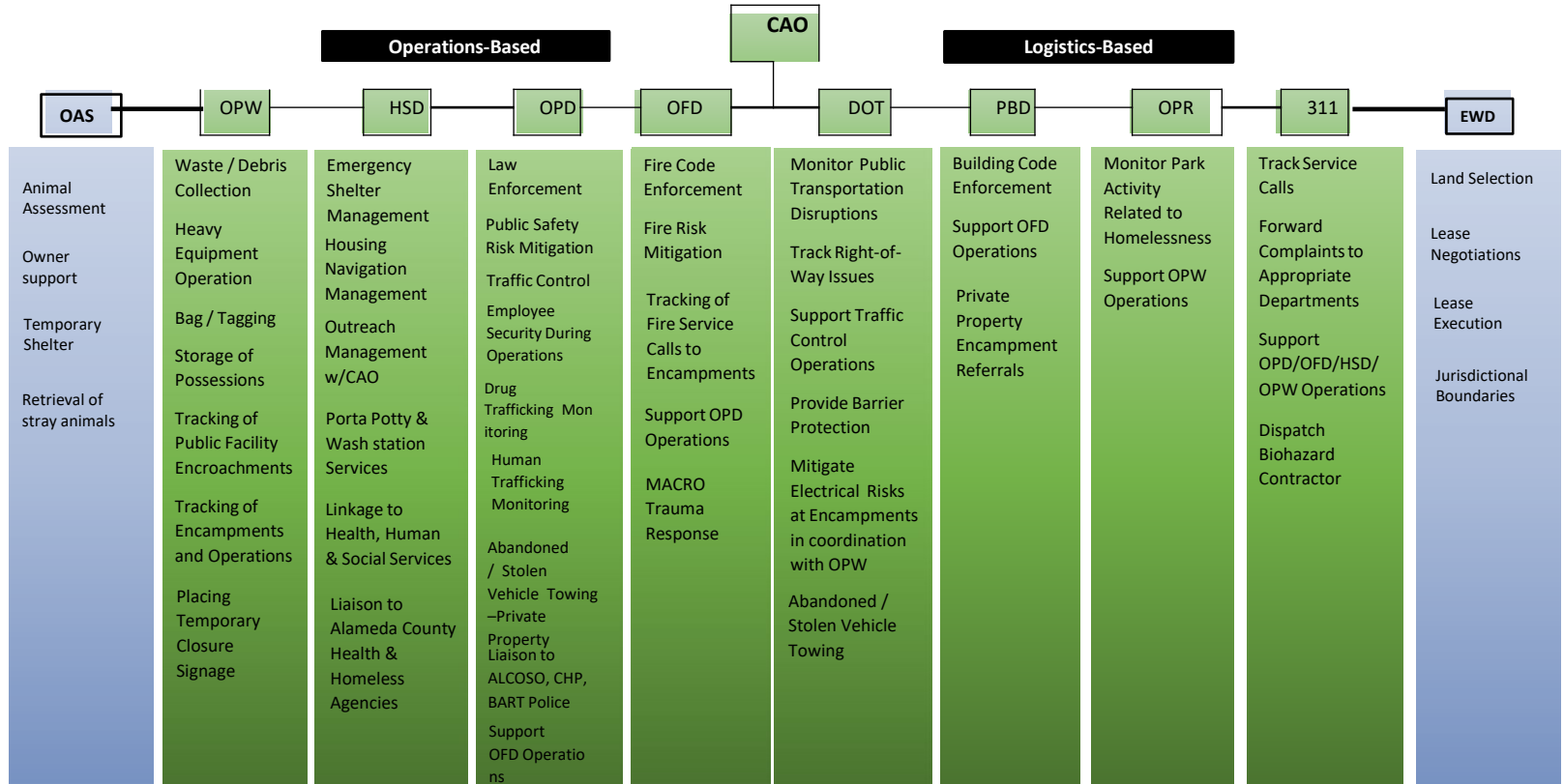
■ Closure ■ Deep Clean ■ Partial Closure ■ Other

Operations by District – Distribution





Encampment Management Team Roles and Responsibilities



Encampment Clean Up Ups

Before -- 31st Ave b/t International & E 12th St.



After -- 31st Ave b/t International & E 12th St.

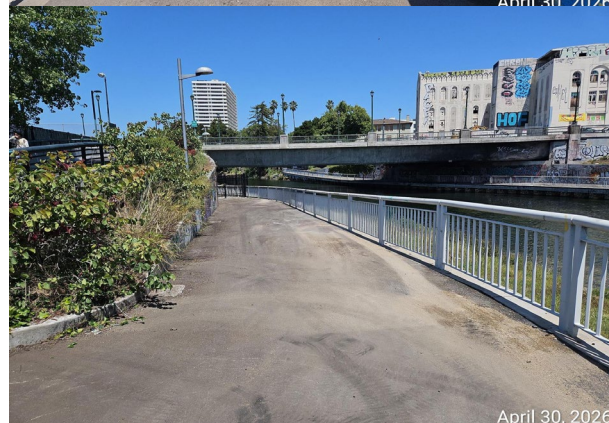


Encampment Clean-Ups

Before -- Lake Merritt Channel



After -- Lake Merritt Channel



Encampment Clean-Ups

Before – Old Greyhound Building/20th St and Castro



After – Old Greyhound Building/20th St and Castro

