

Bi-Annual Crime Report Oakland Police Department

Date Period: June 1, 2019 to December 31, 2019

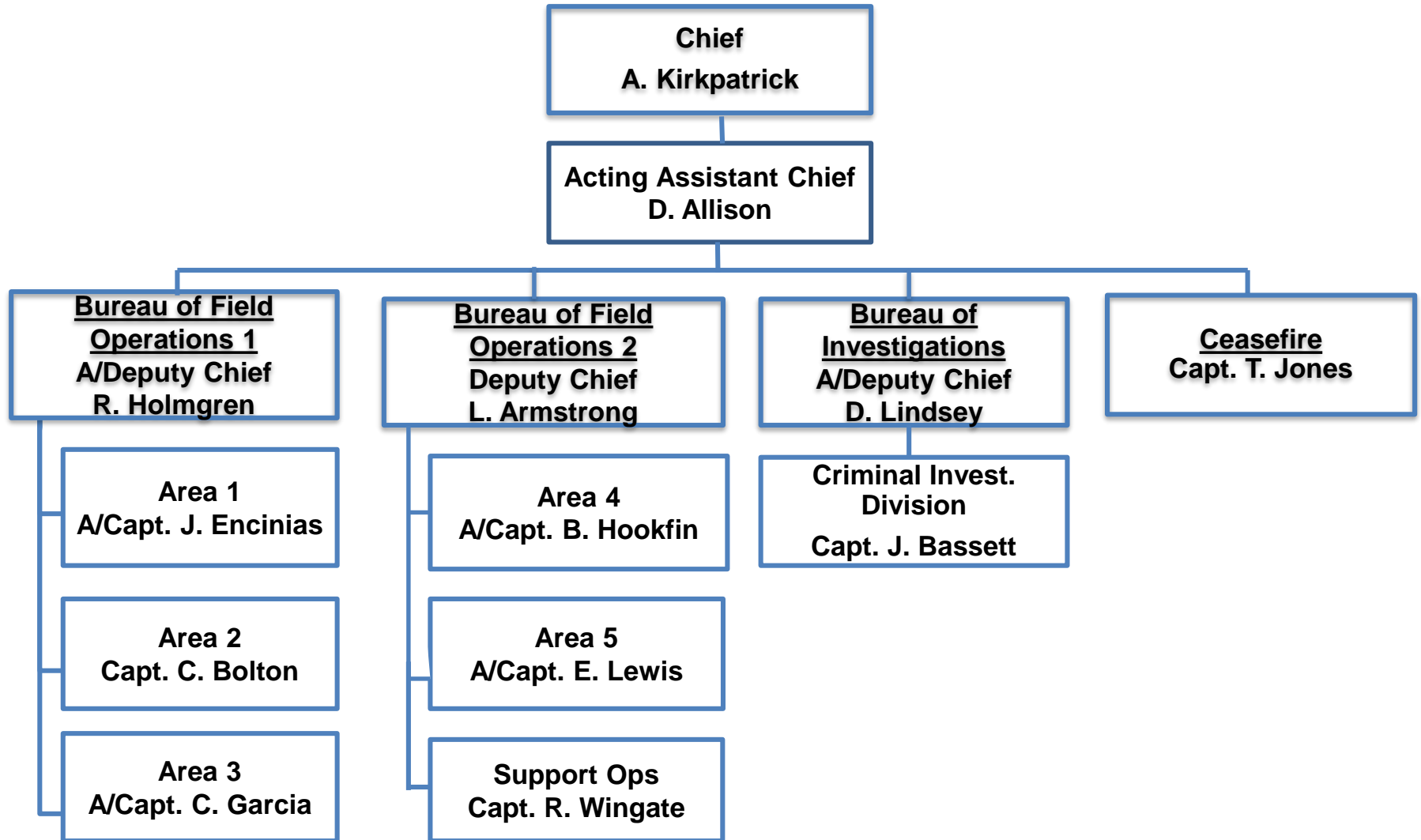
Presentation to the
Public Safety Committee
February 25, 2020



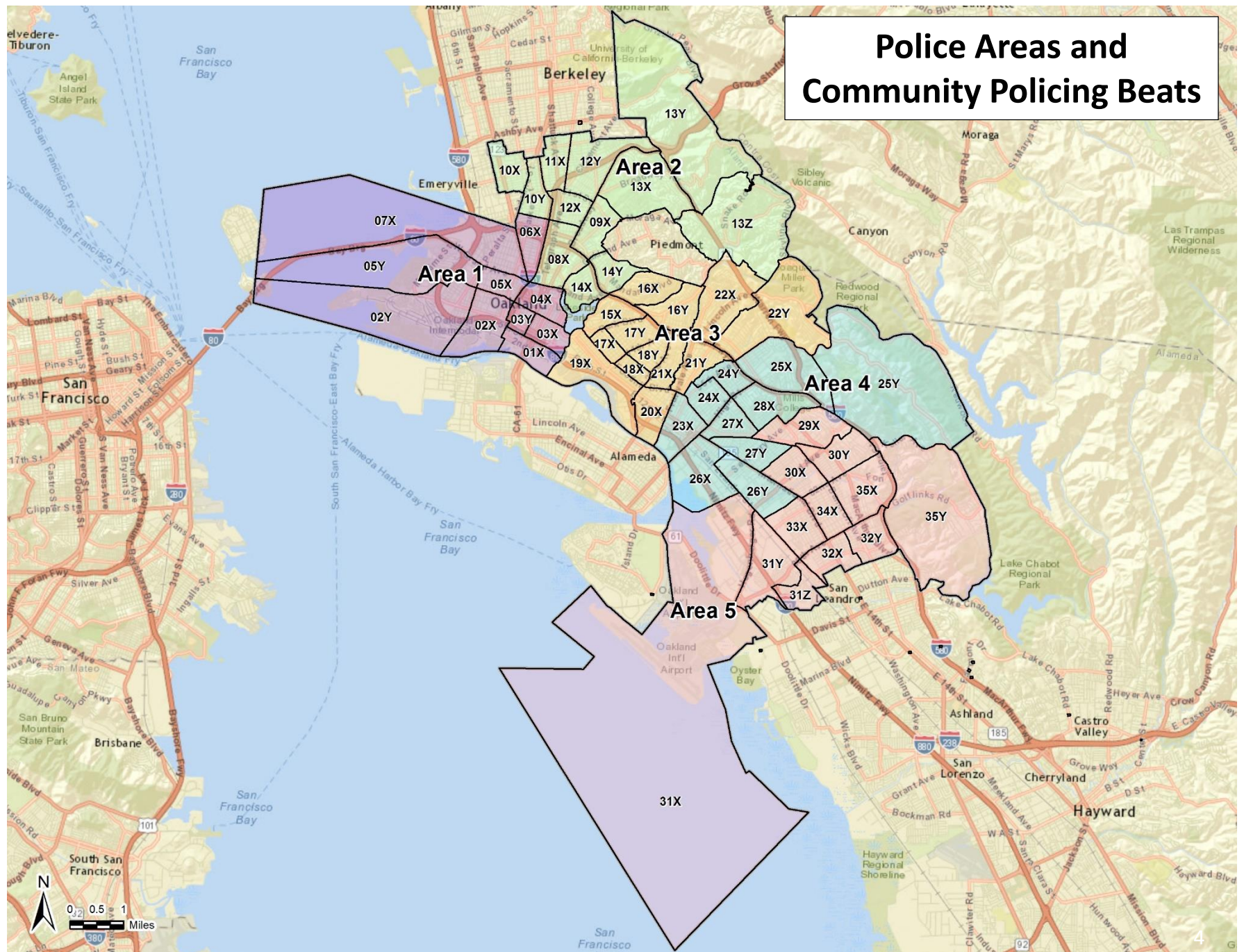
Agenda

- Presentations by Area Commanders
 - 2019 Accomplishments
 - Highlights from 2019
 - Trends and Challenges
 - Specific problems, strategies, and solutions
 - 2020 Goals
 - A look at the year ahead
 - Areas of Focus – One Specific Crime Problem per Police Area
 - Pin maps and trend graphs for each area
 - Hotspot maps and beat comparisons for each area

OPD Organizational Chart



Police Areas and Community Policing Beats



Citywide Crime Stats – Bi-Annual Comparison

Part 1 Crimes <i>All totals include attempts except homicides</i>	01-01-2019 through 06-30-2019	07-01-2019 through 12-31-2019	Six-Month % Comparison
Homicide	37	38	3%
Aggravated Assault	1,766	1,625	-8%
• With Firearm	144	142	-1%
Rape	102	88	-14%
Robbery	1,318	1,473	12%
Burglary Total	6,486	7,719	19%
• Auto	5,238	6,435	23%
• Residential	851	893	5%
• Commercial	315	295	-6%
• Other/Unknown	82	96	17%
Motor Vehicle Theft	3,249	3,163	-3%
Larceny	3,396	4,060	20%
Arson	63	89	41%
Total Part 1 Crimes	16,417	18,255	11%

This report is hierarchy based. Crime totals reflect one offense (the most severe) per incident.

These statistics are drawn from the Oakland Police Dept. database. They are unaudited and not used to figure the crime numbers reported to the FBI's Uniform Crime Reporting (UCR) program. This report is run by the date the crimes occurred. Statistics can be affected by late reporting, the geocoding process, or the reclassification or unfounding of crimes. Because crime reporting and data entry can run behind, all crimes may not be recorded.

PNC = Percentage not calculated — [Percentage cannot be calculated.](#)

All data extracted via the LEAP Network. All totals include attempts except homicides.

Citywide Crime Stats – Full Year Comparison

Part 1 Crimes <i>All totals include attempts except homicides</i>	01-01-2018 through 12-31-2018	01-01-2019 through 12-31-2019	Full-Year % Change 2018 vs. 2019	3-Year Full-Year Average	Full-Year 2019 vs. 3-Year Full-Year Average
Homicide	67	75	12%	71	6%
Aggravated Assault	3,047	3,334	9%	3,083	8%
• With Firearm	274	284	4%	280	2%
Rape	223	189	-15%	219	-14%
Robbery	2,588	2,789	8%	2,662	5%
Burglary Total	10,608	14,201	34%	12,580	13%
• Auto	8,226	11,670	42%	10,091	16%
• Residential	1,614	1,743	8%	1,762	-1%
• Commercial	606	609	0%	544	12%
• Other/Unknown	162	179	10%	183	-2%
Motor Vehicle Theft	6,204	6,416	3%	6,519	-2%
Larceny	6,613	7,452	13%	6,758	10%
Arson	195	151	-23%	166	-9%
Total Part 1 Crimes	29,545	34,607	17%	32,058	8%

This report is hierarchy based. Crime totals reflect one offense (the most severe) per incident.

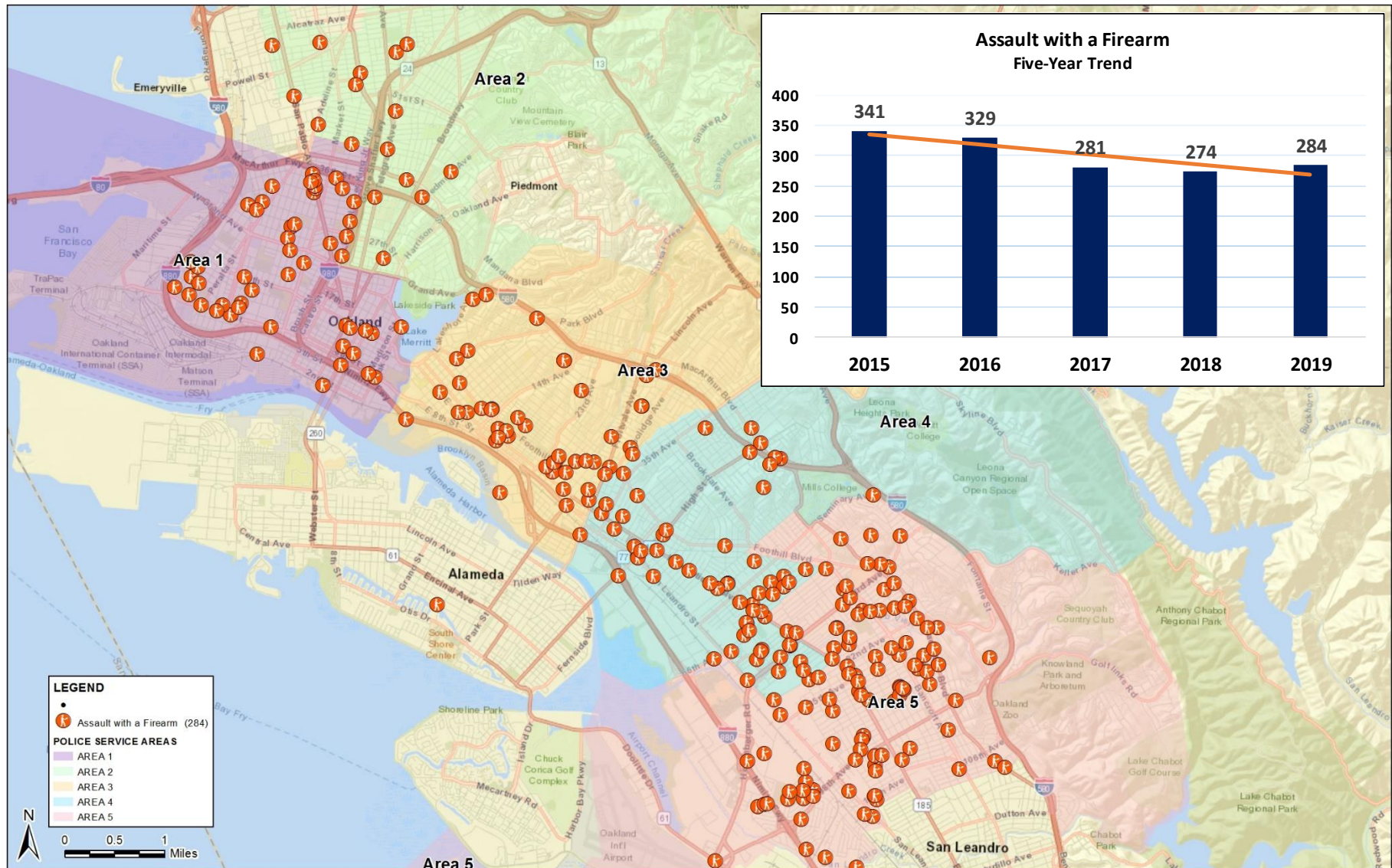
These statistics are drawn from the Oakland Police Dept. database. They are unaudited and not used to figure the crime numbers reported to the FBI's Uniform Crime Reporting (UCR) program. This report is run by the date the crimes occurred. Statistics can be affected by late reporting, the geocoding process, or the reclassification or unfounding of crimes. Because crime reporting and data entry can run behind, all crimes may not be recorded.

PNC = Percentage not calculated — [Percentage cannot be calculated.](#)

All data extracted via the LEAP Network. All totals include attempts except homicides.

Citywide – Area of Focus

Assault with a Firearm – 2019



This map is incident based. Map pins reflect all charges listed in each incident.

Map prepared via CrimeView Desktop. Map pins include attempts.

Police Area 1: Acting Captain (A/C) Jill Encinias



Area 1 — A/C Jill Encinias

Part 1 Crimes <i>All totals include attempts except homicides</i>	01-01-2019 through 06-30-2019	07-01-2019 through 12-31-2019	Six-Month % Comparison
Homicide	9	5	-44%
Aggravated Assault	339	273	-19%
• With Firearm	28	21	-25%
Rape	23	19	-17%
Robbery	278	307	10%
Burglary Total	1,846	2,219	20%
• Auto	1,641	2,046	25%
• Residential	91	103	13%
• Commercial	87	53	-39%
• Other/Unknown	27	17	-37%
Motor Vehicle Theft	444	375	-16%
Larceny	827	942	14%
Arson	16	20	25%
Total Part 1 Crimes	3,782	4,160	10%

This report is hierarchy based. Crime totals reflect one offense (the most severe) per incident.

These statistics are drawn from the Oakland Police Dept. database. They are unaudited and not used to figure the crime numbers reported to the FBI's Uniform Crime Reporting (UCR) program. This report is run by the date the crimes occurred. Statistics can be affected by late reporting, the geocoding process, or the reclassification or unfounding of crimes. Because crime reporting and data entry can run behind, all crimes may not be recorded.

PNC = Percentage not calculated — [Percentage cannot be calculated.](#)

All data extracted via the LEAP Network. All totals include attempts except homicides.

Area 1 — A/C Jill Encinias

Part 1 Crimes <i>All totals include attempts except homicides</i>	01-01-2018 through 12-31-2018	01-01-2019 through 12-31-2019	Full-Year % Change 2018 vs. 2019	3-Year Full-Year Average	Full-Year 2019 vs. 3-Year Full-Year Average
Homicide	13	14	8%	13	8%
Aggravated Assault	578	605	5%	579	4%
• With Firearm	54	49	-9%	46	7%
Rape	48	42	-13%	44	-4%
Robbery	582	584	0%	573	2%
Burglary Total	3,403	4,064	19%	3,732	9%
• Auto	3,020	3,686	22%	3,330	11%
• Residential	190	194	2%	217	-11%
• Commercial	162	140	-14%	145	-4%
• Other/Unknown	31	44	42%	39	13%
Motor Vehicle Theft	883	820	-7%	878	-7%
Larceny	1,608	1,768	10%	1,642	8%
Arson	55	36	-35%	44	-18%
Total Part 1 Crimes	7,170	7,933	11%	7,505	6%

This report is hierarchy based. Crime totals reflect one offense (the most severe) per incident.

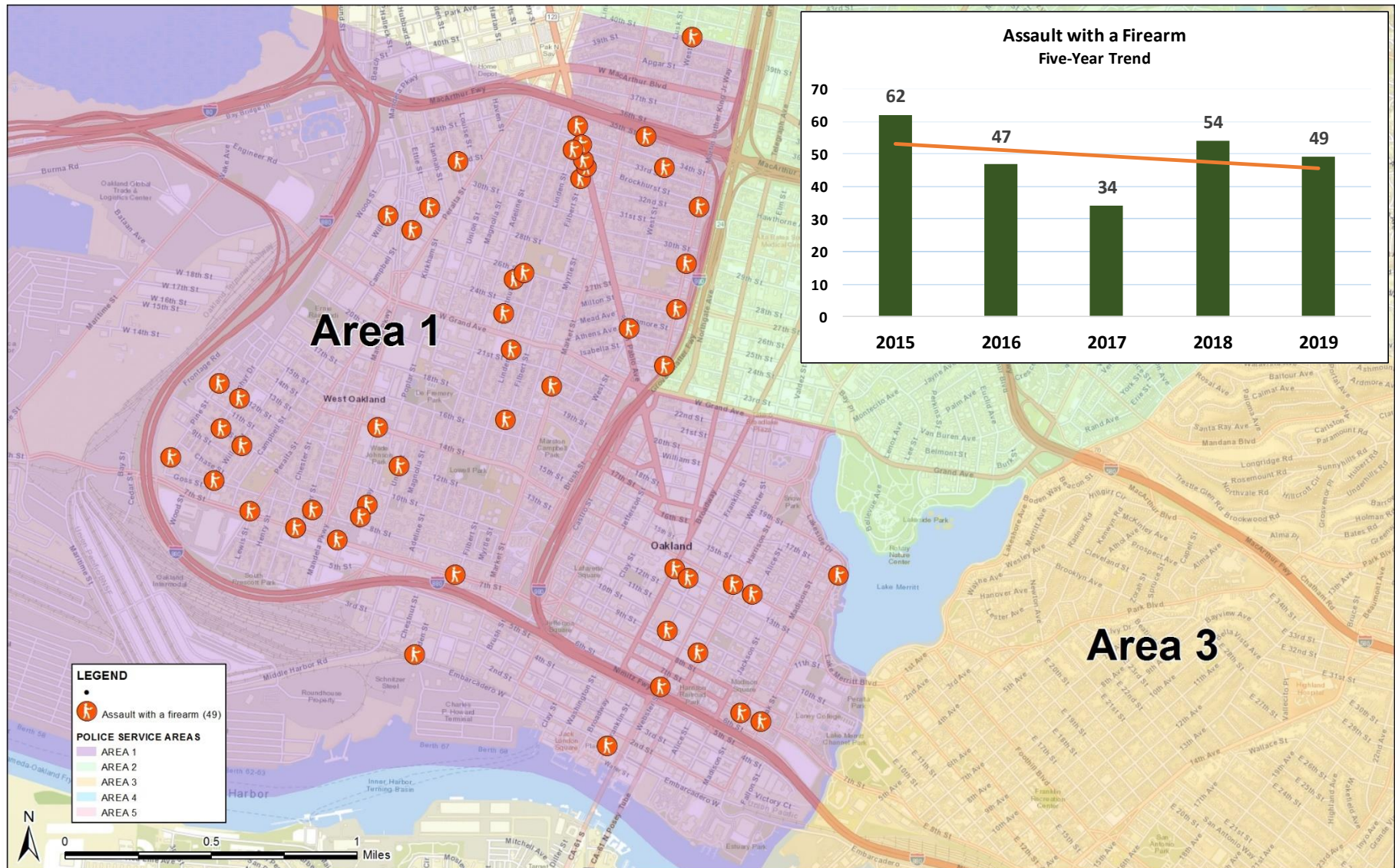
These statistics are drawn from the Oakland Police Dept. database. They are unaudited and not used to figure the crime numbers reported to the FBI's Uniform Crime Reporting (UCR) program. This report is run by the date the crimes occurred. Statistics can be affected by late reporting, the geocoding process, or the reclassification or unfounding of crimes. Because crime reporting and data entry can run behind, all crimes may not be recorded.

PNC = Percentage not calculated — [Percentage cannot be calculated.](#)

All data extracted via the LEAP Network. All totals include attempts except homicides.

Area 1 – Area of Focus

Assault with a Firearm – 2019

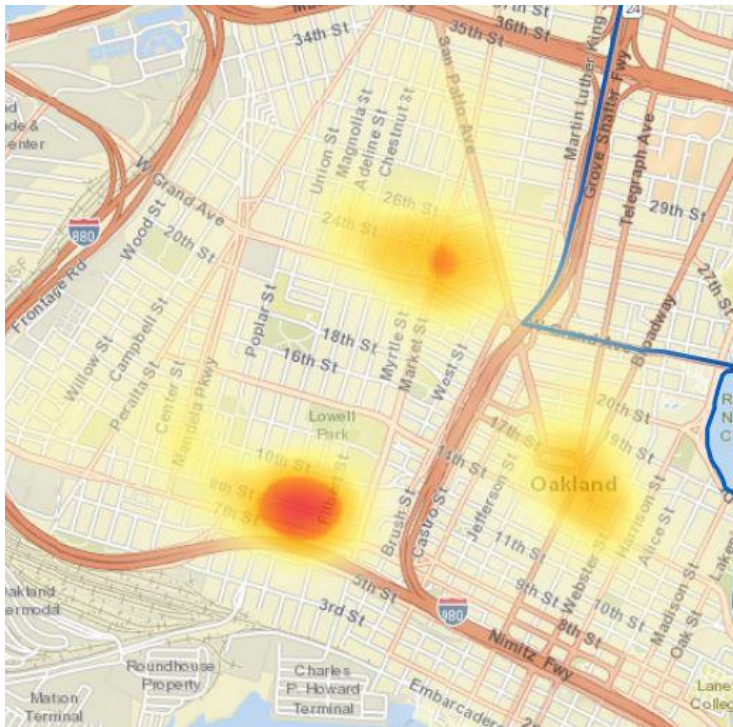


This map is hierarchy based. Map pins reflect one offense (the most severe) per incident.

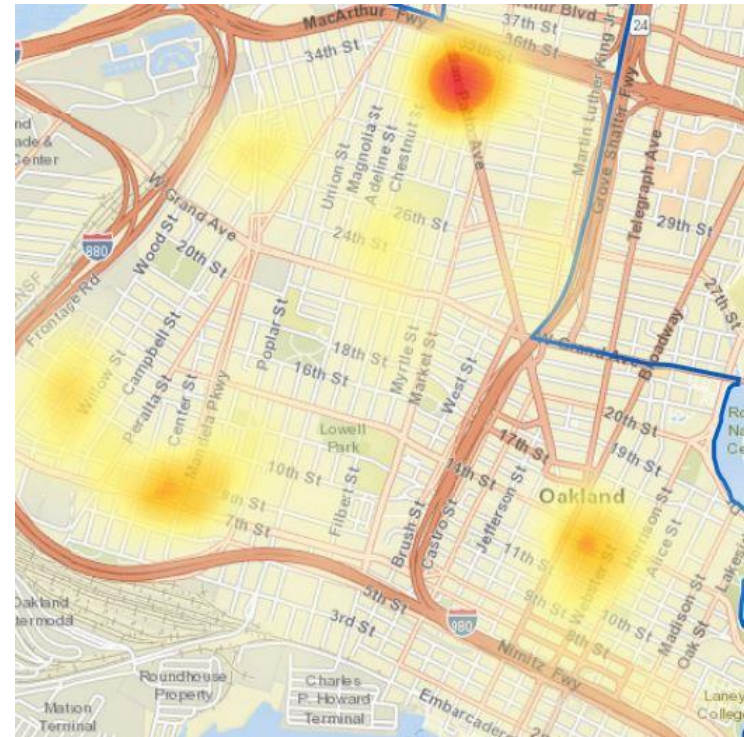
Map prepared via CrimeView Desktop. Map pins include attempts.

Area 1 – Area of Focus

Assault with a Firearm – 2018



Assault with a Firearm – 2019



Area 1	01X	02X	02Y	03X	03Y	04X	05X	05Y	06X	07X	Annual Totals
2018	1	13	5	2	1	11	3	3	4	13	56
2019	1	7	10	8	1	3	3	0	10	12	55
% change	0%	-46%	100%	300%	0%	-73%	0%	-100%	150%	-8%	-2%

This map is hierarchy based. Map pins reflect one offense (the most severe) per incident.

Map and table prepared via CrimeView Dashboard. Map pins include attempts.

Area 1 – Accomplishments

The Area 1 team worked to make significant public-safety arrests, specifically:

- Robberies;
- Shootings; and
- Gang activity.

The officers completed thorough preliminary investigations and reached out to the community, which yielded the following:

- Arrests;
- Recovery of firearms;
- High-powered weapons;
- Ammunition;
- Evidence; and
- Victim property (handguns, rifles, extended magazines, and a 100-round drum magazine).

Area 1 – Accomplishments

- Homicide suspects identified and/or arrested within three days of the incident:
 - Aug – 500 blk Thomas Berkley Wy.
 - Nov – 1200 blk Magnolia St.
 - Dec – 700 blk Adeline St.

- Shooting and robbery suspects identified and arrested within two days of the incident.
 - December, in the downtown business area
 - Arrest of three suspects for attempted murder and robbery
 - The shooter was a juvenile

Area 1 – Trends and Challenges

Trend: Increase in robberies targeting people walking to and from the West Oakland BART station. Area 1 Response:

- Deploy extra officers in strategic areas to prevent robberies and burglaries;
- Provide rides home when possible; and
- Continue additional coverage in partnership with BART police.

Trend: Increase in burglaries in parking garages and streets around Jack London Square. Area 1 Response:

- Continue partnership with security teams in the Jack London area; and
- Continue educational campaign regarding personal safety and cautions about leaving valuables in vehicles.

Trend: Increase in shootings. Area 1 Response:

- Continue Ceasefire partnership to decrease shootings.

Area 1 – Goals

- Reduce shootings by 10%
- Reduce robberies by 10%
- Reduce gang conflicts and shootings
- Increase the community's perception of safety
- Increase officer presence in the downtown business district

Area 2:

Captain (Capt.) Chris Bolton



Area 2 — Capt. Chris Bolton

Part 1 Crimes <i>All totals include attempts except homicides</i>	01-01-2019 through 06-30-2019	07-01-2019 through 12-31-2019	Six-Month % Comparison
Homicide	1	2	100%
Aggravated Assault	132	143	8%
• With Firearm	3	8	167%
Rape	12	7	-42%
Robbery	176	289	64%
Burglary Total	1,916	2,332	22%
• Auto	1,642	1,982	21%
• Residential	201	253	26%
• Commercial	60	81	35%
• Other/Unknown	13	16	23%
Motor Vehicle Theft	390	379	-3%
Larceny	705	971	38%
Arson	3	11	267%
Total Part 1 Crimes	3,335	4,134	24%

This report is hierarchy based. Crime totals reflect one offense (the most severe) per incident.

These statistics are drawn from the Oakland Police Dept. database. They are unaudited and not used to figure the crime numbers reported to the FBI's Uniform Crime Reporting (UCR) program. This report is run by the date the crimes occurred. Statistics can be affected by late reporting, the geocoding process, or the reclassification or unfounding of crimes. Because crime reporting and data entry can run behind, all crimes may not be recorded.

PNC = Percentage not calculated — [Percentage cannot be calculated.](#)

All data extracted via the LEAP Network. All totals include attempts except homicides.

Area 2 — Capt. Chris Bolton

Part 1 Crimes <i>All totals include attempts except homicides</i>	01-01-2018 through 12-31-2018	01-01-2019 through 12-31-2019	Full-Year % Change 2018 vs. 2019	3-Year Full-Year Average	Full-Year 2019 vs. 3-Year Full-Year Average
Homicide	6	3	-50%	5	-40%
Aggravated Assault	272	274	1%	279	-2%
• With Firearm	8	11	38%	12	-11%
Rape	34	19	-44%	26	-27%
Robbery	353	465	32%	419	11%
Burglary Total	2,839	4,247	50%	3,699	15%
• Auto	2,231	3,624	62%	3,054	19%
• Residential	449	453	1%	492	-8%
• Commercial	128	141	10%	122	16%
• Other/Unknown	31	29	-6%	31	-6%
Motor Vehicle Theft	762	769	1%	832	-8%
Larceny	1,418	1,675	18%	1,513	11%
Arson	14	14	0%	13	8%
Total Part 1 Crimes	5,698	7,466	31%	6,785	10%

This report is hierarchy based. Crime totals reflect one offense (the most severe) per incident.

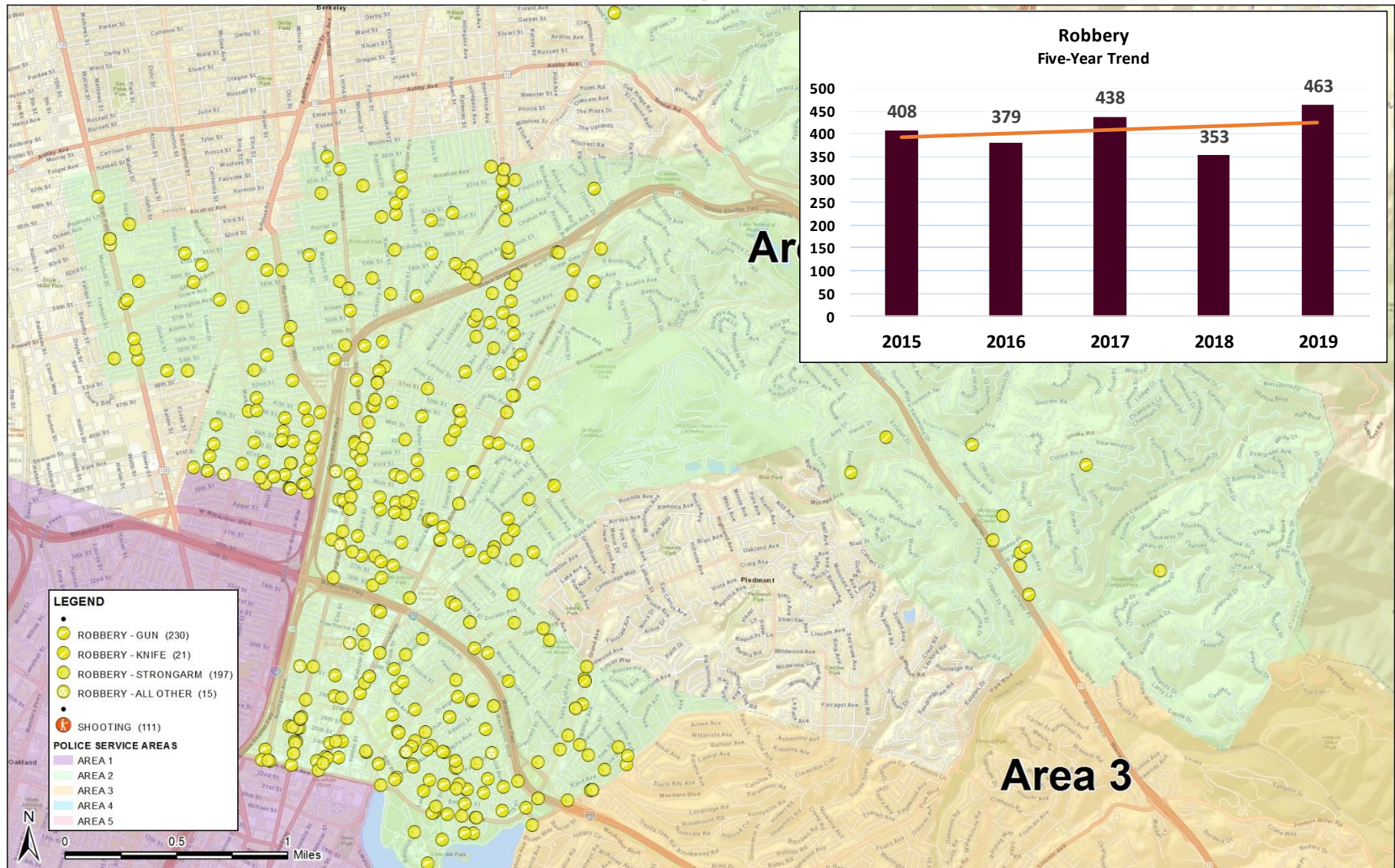
These statistics are drawn from the Oakland Police Dept. database. They are unaudited and not used to figure the crime numbers reported to the FBI's Uniform Crime Reporting (UCR) program. This report is run by the date the crimes occurred. Statistics can be affected by late reporting, the geocoding process, or the reclassification or unfounding of crimes. Because crime reporting and data entry can run behind, all crimes may not be recorded.

PNC = Percentage not calculated — [Percentage cannot be calculated.](#)

All data extracted via the LEAP Network. All totals include attempts except homicides.

Area 2 – Area of Focus

Robbery – 2019

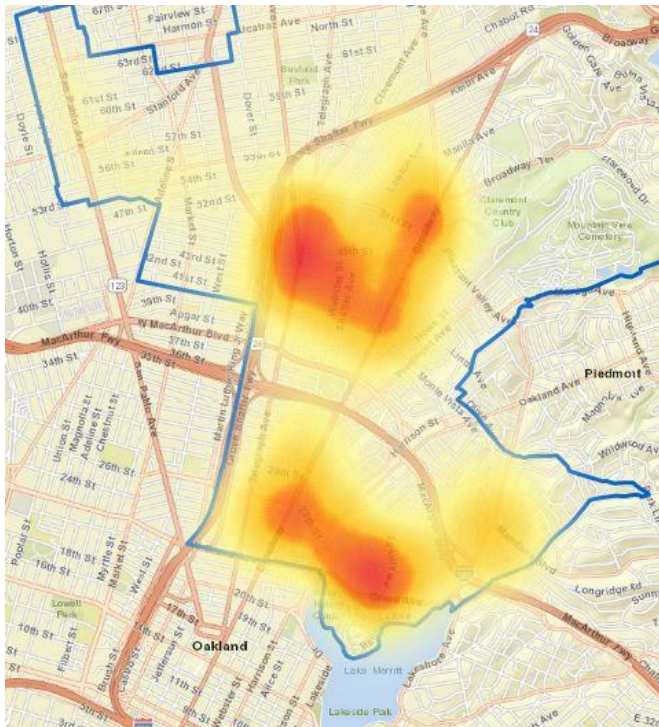


This map is hierarchy based. Map pins reflect one offense (the most severe) per incident.

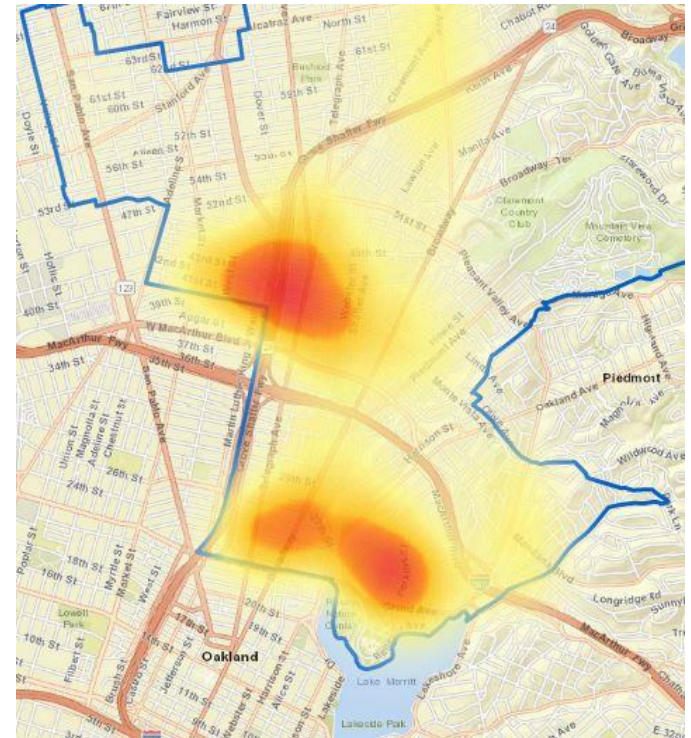
Map prepared via CrimeView Desktop. Map pins include attempts.

Area 2 – Area of Focus

Robbery – 2018



Robbery – 2019



Area 2	08X	09X	10X	10Y	11X	12X	12Y	13X	13Y	13Z	14X	14Y	Annual Totals
2018	55	40	22	23	20	46	36	2	2	17	48	35	346
2019	86	37	20	53	24	58	59	6	5	12	69	38	467
% change	56%	-8%	-9%	130%	20%	26%	64%	200%	150%	-29%	44%	9%	35%

This map is hierarchy based. Map pins reflect one offense (the most severe) per incident.

Map and table prepared via CrimeView Dashboard. Map pins include attempts.

Area 2 – Accomplishments

- Addressed firearm violence through the Ceasefire model with partners and stakeholders.
- Sustained and improved practices of intelligence - and precision-based policing.
- Prioritized community police beat issues and problem-solving projects.

Area 2 – Trends and Challenges

- Burglary enforcement operations require an improved approach.
- Burglary and robbery recidivism.
 - Suspects arrested for burglary and robbery often have past repeat or related arrests and charges and may be on active probation or parole.
- Community complaints regarding OPD's role in unsheltered encampment response and surrounding issues.
- Calls for service demand, crime response, and staffing.

Area 2 – Goals

- Continued focus and efforts in line with 2019 accomplishments.
- Decrease robbery and burglary rates through partnerships and enhanced investigation at the Community Resource and Crime Reduction Team level.
- Increase collaboration with law-enforcement partner agencies and taskforces.
- Increase the number and quality of successfully closed and communicated problem-solving projects.

Area 3: A/C Carlos Gonzalez



Area 3 — A/Capt. Carlos Gonzalez

Part 1 Crimes <i>All totals include attempts except homicides</i>	01-01-2019 through 06-30-2019	07-01-2019 through 12-31-2019	Six-Month % Comparison
Homicide	10	4	-60%
Aggravated Assault	296	272	-8%
• With Firearm	29	20	-31%
Rape	19	24	26%
Robbery	306	332	8%
Burglary Total	929	969	4%
• Auto	600	662	10%
• Residential	262	244	-7%
• Commercial	51	47	-8%
• Other/Unknown	16	16	0%
Motor Vehicle Theft	785	734	-6%
Larceny	611	674	10%
Arson	9	8	-11%
Total Part 1 Crimes	2,965	3,017	2%

This report is hierarchy based. Crime totals reflect one offense (the most severe) per incident.

These statistics are drawn from the Oakland Police Dept. database. They are unaudited and not used to figure the crime numbers reported to the FBI's Uniform Crime Reporting (UCR) program. This report is run by the date the crimes occurred. Statistics can be affected by late reporting, the geocoding process, or the reclassification or unfounding of crimes. Because crime reporting and data entry can run behind, all crimes may not be recorded.

PNC = Percentage not calculated — [Percentage cannot be calculated.](#)

All data extracted via the LEAP Network. All totals include attempts except homicides.

Area 3 — A/Capt. Carlos Gonzalez

Part 1 Crimes <i>All totals include attempts except homicides</i>	01-01-2018 through 12-31-2018	01-01-2019 through 12-31-2019	Full-Year % Change 2018 vs. 2019	3-Year Full-Year Average	Full-Year 2019 vs. 3-Year Full-Year Average
Homicide	10	14	40%	11	24%
Aggravated Assault	453	554	22%	481	15%
• With Firearm	41	49	20%	43	14%
Rape	45	43	-4%	51	-16%
Robbery	630	638	1%	611	4%
Burglary Total	1,559	1,898	22%	1,748	9%
• Auto	989	1,262	28%	1,172	8%
• Residential	431	506	17%	456	11%
• Commercial	101	98	-3%	85	16%
• Other/Unknown	38	32	-16%	35	-9%
Motor Vehicle Theft	1,369	1,519	11%	1,431	6%
Larceny	1,205	1,285	7%	1,155	11%
Arson	23	17	-26%	20	-16%
Total Part 1 Crimes	5,294	5,968	13%	5,509	8%

This report is hierarchy based. Crime totals reflect one offense (the most severe) per incident.

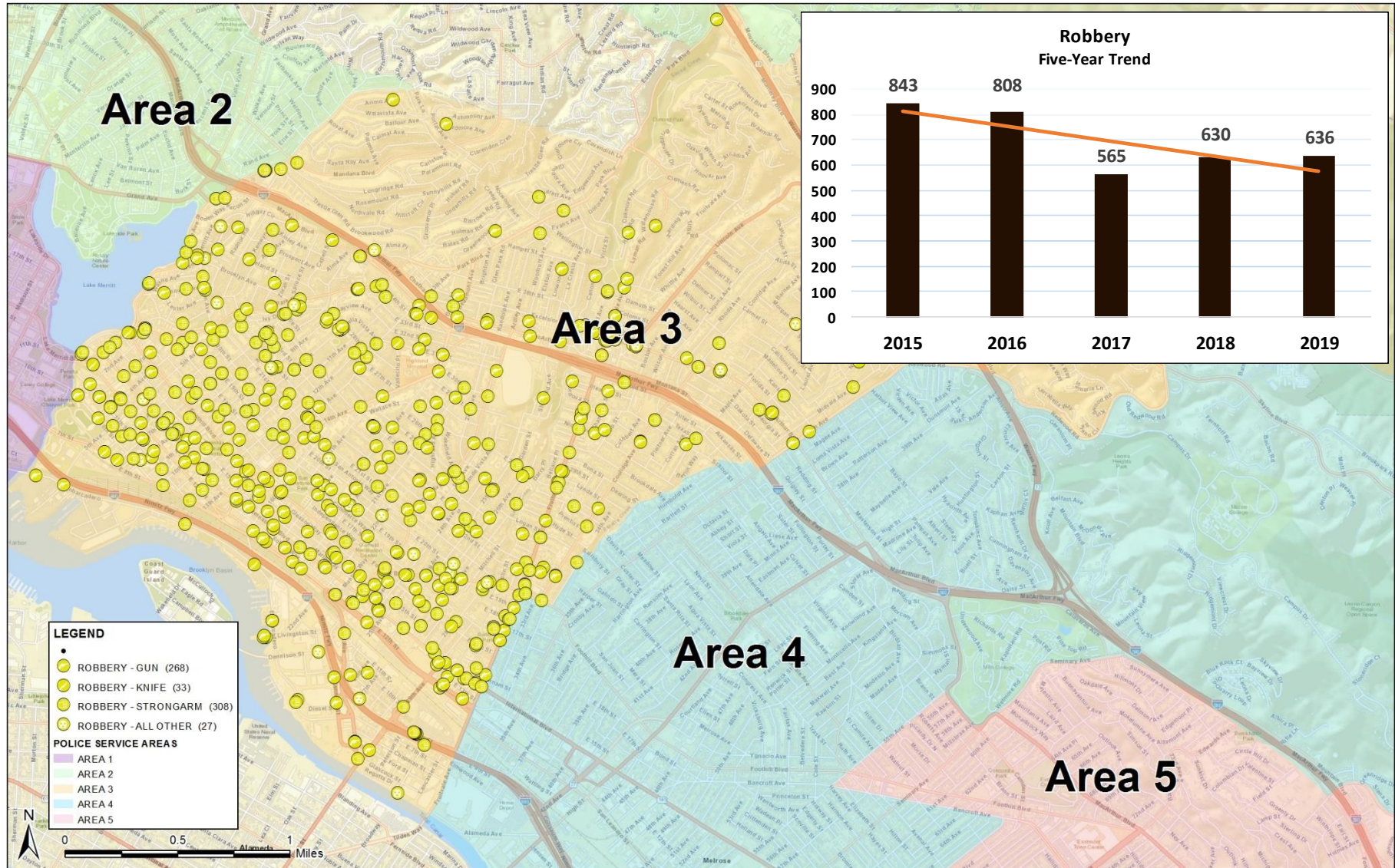
These statistics are drawn from the Oakland Police Dept. database. They are unaudited and not used to figure the crime numbers reported to the FBI's Uniform Crime Reporting (UCR) program. This report is run by the date the crimes occurred. Statistics can be affected by late reporting, the geocoding process, or the reclassification or unfounding of crimes. Because crime reporting and data entry can run behind, all crimes may not be recorded.

PNC = Percentage not calculated — [Percentage cannot be calculated.](#)

All data extracted via the LEAP Network. All totals include attempts except homicides.

Area 3 – Area of Focus

Robbery – 2019

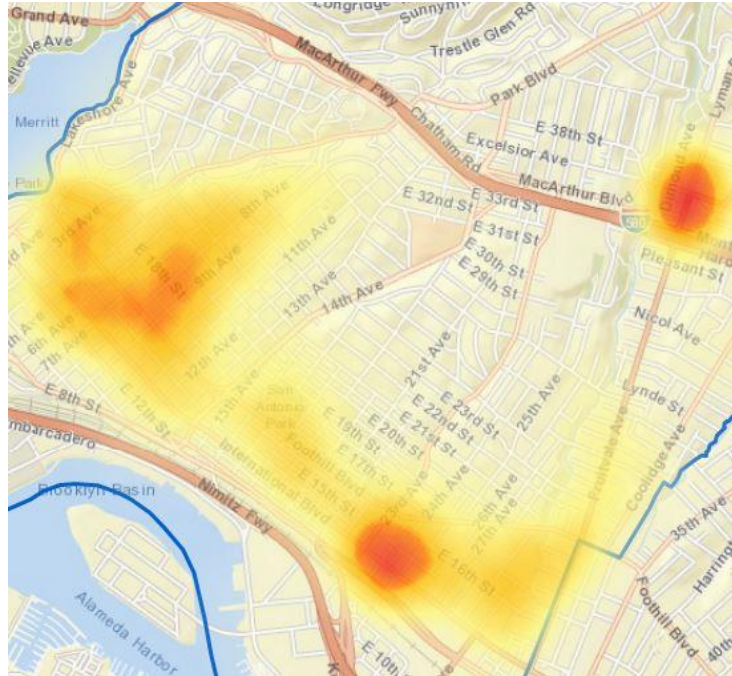


This map is hierarchy based. Map pins reflect one offense (the most severe) per incident.

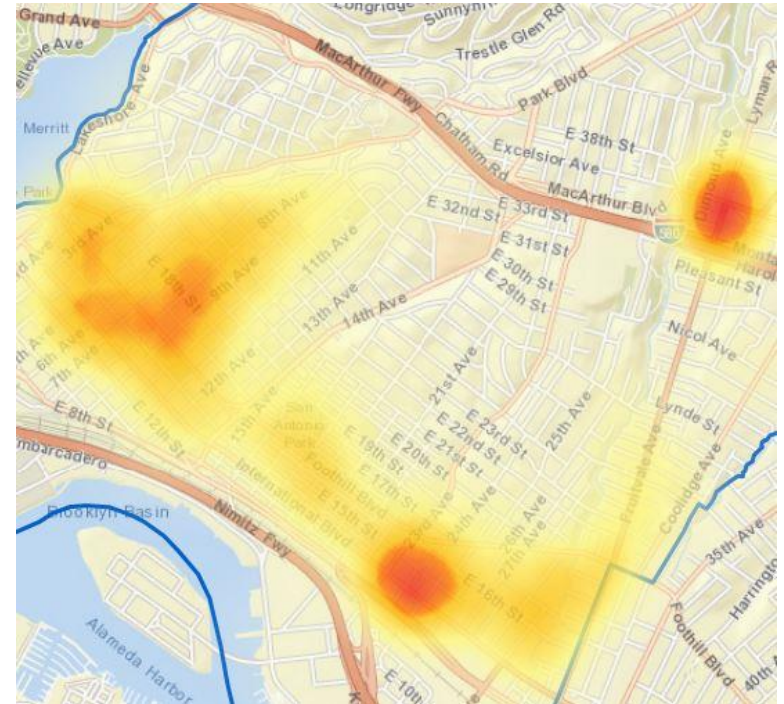
Map prepared via CrimeView Desktop. Map pins include attempts.

Area 3 – Area of Focus

Robbery – 2018



Robbery – 2019



Area 3	15X	16X	16Y	17X	17Y	18X	18Y	19X	20X	21X	21Y	22X	22Y	Annual Totals
2018	43	9	11	63	59	34	21	107	105	34	59	51	31	627
2019	50	10	17	38	61	29	28	141	94	41	50	48	29	636
% change	16%	11%	55%	-40%	3%	-15%	33%	32%	-10%	21%	-15%	-6%	-6%	1%

This map is hierarchy based. Map pins reflect one offense (the most severe) per incident.

Map and table prepared via CrimeView Dashboard. Map pins include attempts.

Area 3 – Accomplishments

- Reduced homicides from 10 (January-June, 2019) to 4 (July-December, 2019).
- Reduced assault with a firearm from 29 (January-June, 2019) to 20 (July-December, 2019).
- Reduced overall aggravated assault from 296 (January-June, 2019) to 272 (July-December, 2019).
- Reduced residential burglary from (January-June, 2019) to 244 (July-December, 2019).
- Reduced commercial burglary from 51 (January-June, 2019) to 47 (July-December, 2019).

Area 3 – Trends and Challenges

- **Trend:** Increased Robberies – Victims targeted are isolated individuals; loss is frequently cellphones and backpacks.
- **Trend:** Assaults – Late- night and early morning incidents are associated with illegal gambling shacks or people involved with sex trafficking on city streets.
- **Trend:** Auto Burglaries – Victims often have visible items in their cars or are patrons at local businesses with parking lots or nearby street parking.

Area 3 – Trends and Challenges

- Deploy additional officers for crime prevention enforcement and presence in targeted areas, which has a significant impact and helps reduce the fear of crime.
- Continue officer engagement with community and business members to help educate and share strategies, increasing personal safety and reducing the victim pool of crimes of opportunity.
- Collaborate with internal resources and outside agencies to develop a comprehensive plan that will eradicate property loss and disrupt the organized fencing that supports this repetitive criminal behavior.

Area 3 – Goals

- Engage with the community and businesses to enhance trust and communication.
- Educate the community to reduce crimes of opportunity.
- Reduce violent crime to improve quality of life and reduce the fear of crime.

Area 4: A/C Bobby Hookfin



Area 4 — A/C Bobby Hookfin

Part 1 Crimes <i>All totals include attempts except homicides</i>	01-01-2019 through 06-30-2019	07-01-2019 through 12-31-2019	Six-Month % Comparison
Homicide	3	10	233%
Aggravated Assault	388	328	-15%
• With Firearm	32	28	-13%
Rape	11	14	27%
Robbery	276	292	6%
Burglary Total	560	495	-12%
• Auto	351	290	-17%
• Residential	141	121	-14%
• Commercial	59	65	10%
• Other/Unknown	9	19	111%
Motor Vehicle Theft	722	739	2%
Larceny	534	568	6%
Arson	12	16	33%
Total Part 1 Crimes	2,506	2,462	-2%

This report is hierarchy based. Crime totals reflect one offense (the most severe) per incident.

These statistics are drawn from the Oakland Police Dept. database. They are unaudited and not used to figure the crime numbers reported to the FBI's Uniform Crime Reporting (UCR) program. This report is run by the date the crimes occurred. Statistics can be affected by late reporting, the geocoding process, or the reclassification or unfounding of crimes. Because crime reporting and data entry can run behind, all crimes may not be recorded.

PNC = Percentage not calculated — [Percentage cannot be calculated.](#)

All data extracted via the LEAP Network. All totals include attempts except homicides.

Area 4 — A/C Bobby Hookfin

Part 1 Crimes <i>All totals include attempts except homicides</i>	01-01-2018 through 12-31-2018	01-01-2019 through 12-31-2019	Full-Year % Change 2018 vs. 2019	3-Year Full-Year Average	Full-Year 2019 vs. 3-Year Full-Year Average
Homicide	17	13	-24%	14	-9%
Aggravated Assault	670	703	5%	670	5%
• With Firearm	46	58	26%	56	4%
Rape	29	24	-17%	33	-27%
Robbery	510	568	11%	549	3%
Burglary Total	961	1,055	10%	1,032	2%
• Auto	566	641	13%	632	1%
• Residential	255	262	3%	264	-1%
• Commercial	115	123	7%	102	21%
• Other/Unknown	25	29	16%	34	-15%
Motor Vehicle Theft	1,351	1,461	8%	1,428	2%
Larceny	953	1,101	16%	975	13%
Arson	38	28	-26%	33	-14%
Total Part 1 Crimes	4,529	4,953	9%	4,733	5%

This report is hierarchy based. Crime totals reflect one offense (the most severe) per incident.

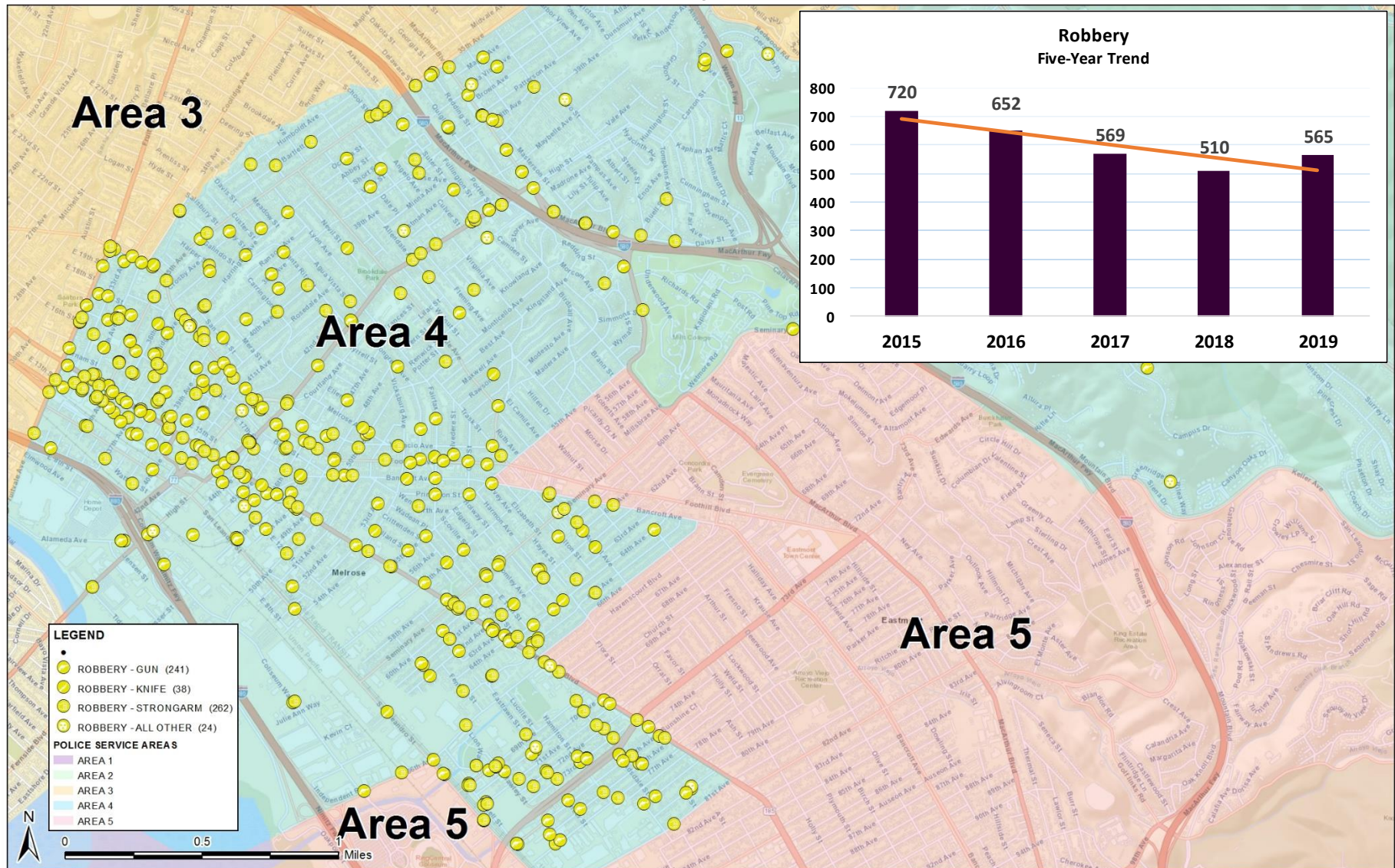
These statistics are drawn from the Oakland Police Dept. database. They are unaudited and not used to figure the crime numbers reported to the FBI's Uniform Crime Reporting (UCR) program. This report is run by the date the crimes occurred. Statistics can be affected by late reporting, the geocoding process, or the reclassification or unfounding of crimes. Because crime reporting and data entry can run behind, all crimes may not be recorded.

PNC = Percentage not calculated — [Percentage cannot be calculated.](#)

All data extracted via the LEAP Network. All totals include attempts except homicides.

Area 4 – Area of Focus

Robbery – 2019

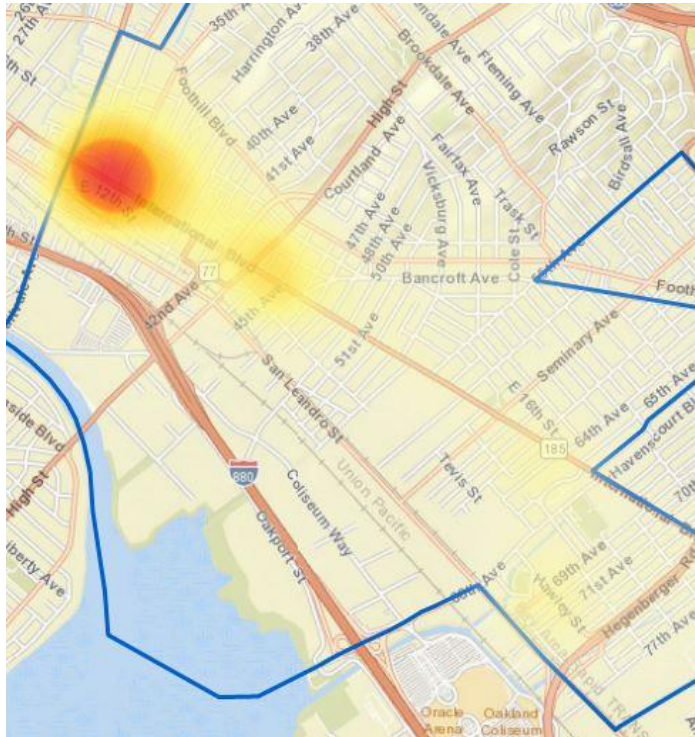


This map is hierarchy based. Map pins reflect one offense (the most severe) per incident.

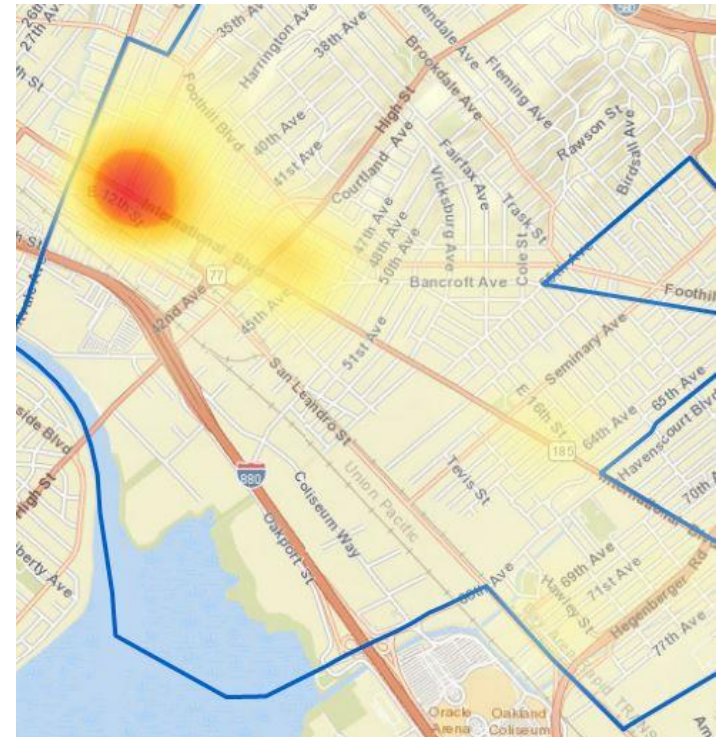
Map prepared via CrimeView Desktop. Map pins include attempts.

Area 4 – Area of Focus

Robbery – 2018



Robbery – 2019



Area 4	23X	24X	24Y	25X	25Y	26X	26Y	27X	27Y	28X	Annual Totals
2018	139	30	34	19	11	40	94	48	69	12	496
2019	169	44	23	41	7	35	101	64	72	16	572
% change	22%	47%	-32%	116%	-36%	-13%	7%	33%	4%	33%	15%

This map is hierarchy based. Map pins reflect one offense (the most severe) per incident.

Map and table prepared via CrimeView Dashboard. Map pins include attempts.

Area 4 – Accomplishments

- Strengthened Community Relationships
 - Fruitvale Transit Village
 - East Bay Faith in Action
- Law Enforcement Partnerships
 - Oakland Housing Authority Police Dept.
 - BART Police Dept.
- Significant Felony Arrests and Firearm Recoveries
 - 6 murder/attempted murder arrests
 - 35 firearm arrest/recoveries
 - 12 robbery arrests

Area 4 – Trends and Challenges

- **Trend:** Increase in strong-arm robberies of cell phones and laptops
 - **Challenge:** Repeat juvenile offenders
- **Trend:** Gang and group related shootings
 - **Challenge:** Social media related altercations spill over into the real world
- **Trend:** Increase in auto burglaries
 - **Challenge:** Stolen items are easily fenced for cash

Area 4 – Goals

Continue to strengthen community relationships

- Collaborate with Neighborhood Crime Prevention Councils (NCPC)
- Utilize Neighborhood Service Coordinators (NSC)
- Collaborate with neighborhood watch groups

Increase intelligence-led policing

- Reduce impact (or footprint) of policing

Significantly Reduce Part 1 Crimes:

- Homicides
- Shootings
- Robberies

Area 5: A/C Eric Lewis



Area 5 — A/C Eric Lewis

Part 1 Crimes <i>All totals include attempts except homicides</i>	01-01-2019 through 06-30-2019	07-01-2019 through 12-31-2019	Six-Month % Comparison
Homicide	14	17	21%
Aggravated Assault	578	593	3%
• With Firearm	47	64	36%
Rape	24	13	-46%
Robbery	251	232	-8%
Burglary Total	911	1,279	40%
• Auto	692	1,044	51%
• Residential	149	161	8%
• Commercial	56	48	-14%
• Other/Unknown	14	26	86%
Motor Vehicle Theft	860	887	3%
Larceny	607	762	26%
Arson	22	31	41%
Total Part 1 Crimes	3,267	3,814	17%

This report is hierarchy based. Crime totals reflect one offense (the most severe) per incident.

These statistics are drawn from the Oakland Police Dept. database. They are unaudited and not used to figure the crime numbers reported to the FBI's Uniform Crime Reporting (UCR) program. This report is run by the date the crimes occurred. Statistics can be affected by late reporting, the geocoding process, or the reclassification or unfounding of crimes. Because crime reporting and data entry can run behind, all crimes may not be recorded.

PNC = Percentage not calculated — [Percentage cannot be calculated.](#)

All data extracted via the LEAP Network. All totals include attempts except homicides.

Area 5 — A/C Eric Lewis

Part 1 Crimes <i>All totals include attempts except homicides</i>	01-01-2018 through 12-31-2018	01-01-2019 through 12-31-2019	Full-Year % Change 2018 vs. 2019	3-Year Full-Year Average	Full-Year 2019 vs. 3-Year Full-Year Average
Homicide	21	31	48%	27	13%
Aggravated Assault	1,003	1,151	15%	1,018	13%
• With Firearm	117	111	-5%	116	-5%
Rape	48	37	-23%	45	-18%
Robbery	483	482	0%	477	1%
Burglary Total	1,304	2,192	68%	1,681	30%
• Auto	903	1,738	92%	1,242	40%
• Residential	271	310	14%	312	-1%
• Commercial	97	104	7%	88	18%
• Other/Unknown	33	40	21%	39	3%
Motor Vehicle Theft	1,743	1,746	0%	1,842	-5%
Larceny	1,204	1,369	14%	1,238	11%
Arson	62	52	-16%	52	0%
Total Part 1 Crimes	5,868	7,060	20%	6,380	11%

This report is hierarchy based. Crime totals reflect one offense (the most severe) per incident.

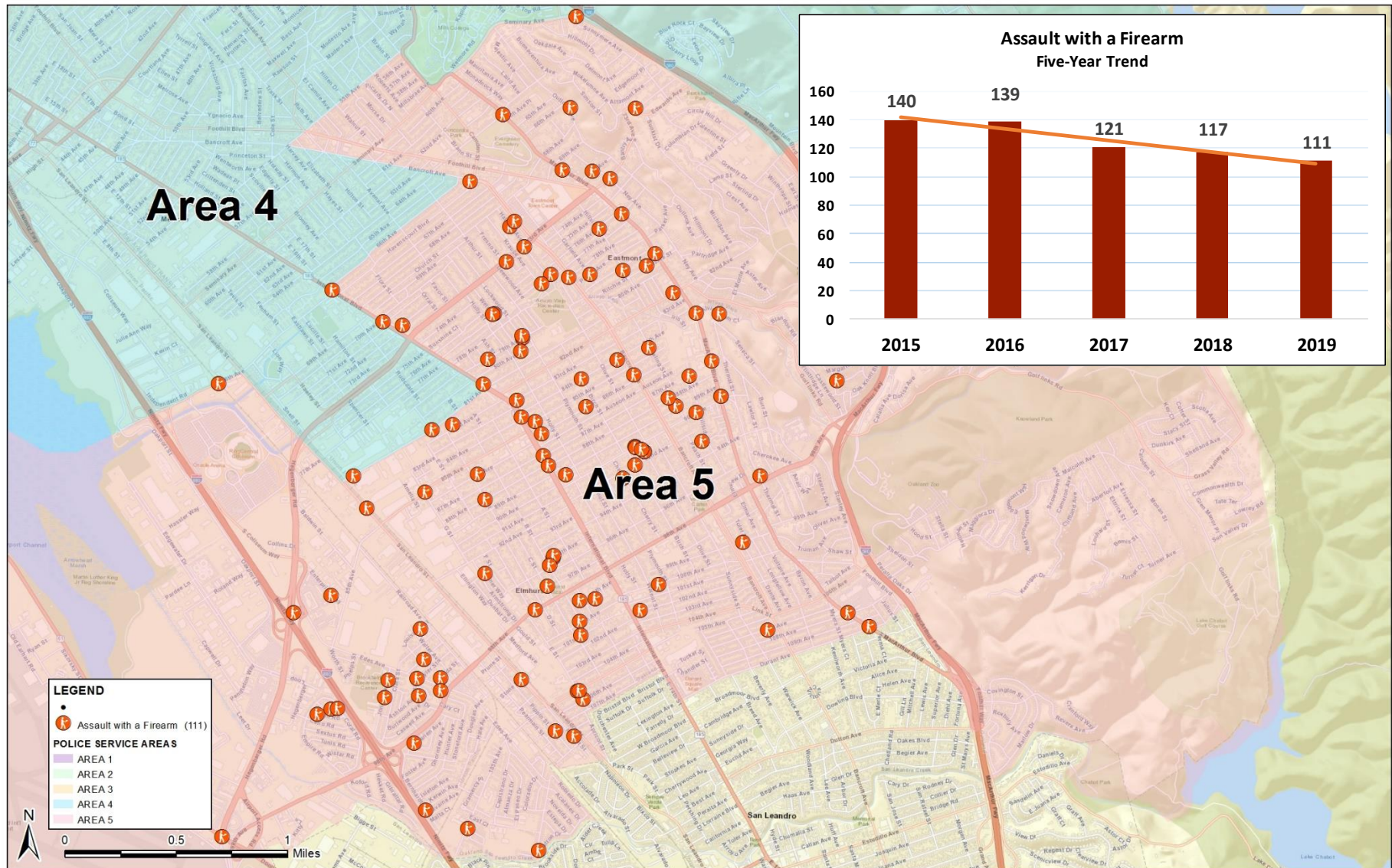
These statistics are drawn from the Oakland Police Dept. database. They are unaudited and not used to figure the crime numbers reported to the FBI's Uniform Crime Reporting (UCR) program. This report is run by the date the crimes occurred. Statistics can be affected by late reporting, the geocoding process, or the reclassification or unfounding of crimes. Because crime reporting and data entry can run behind, all crimes may not be recorded.

PNC = Percentage not calculated — [Percentage cannot be calculated.](#)

All data extracted via the LEAP Network. All totals include attempts except homicides.

Area 5 – Area of Focus

Assault with a Firearm – 2019

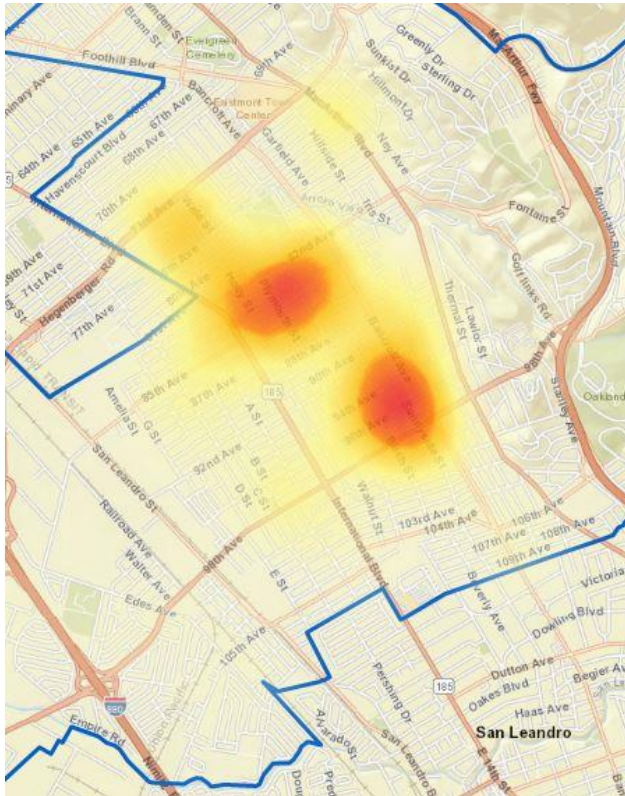


This map is hierarchy based. Map pins reflect one offense (the most severe) per incident.

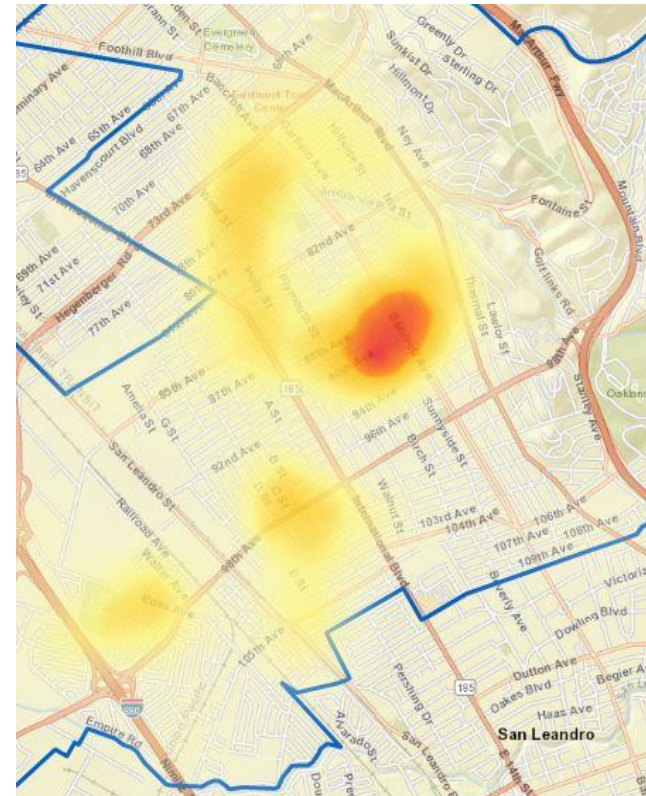
Map prepared via CrimeView Desktop. Map pins include attempts.

Area 5 – Area of Focus

Assault with a Firearm – 2018



Assault with a Firearm – 2019



Area 5	29X	30X	30Y	31X	31Y	31Z	32X	32Y	33X	34X	35X	35Y	Annual Totals
2018	5	18	11	3	7	5	8	8	12	33	14	2	126
2019	6	18	9	2	16	8	11	4	13	20	14	0	121
% change	20%	0%	-18%	-33%	129%	60%	38%	-50%	8%	-39%	0%	-100%	-4%

This map is hierarchy based. Map pins reflect one offense (the most severe) per incident.

Map and table prepared via CrimeView Dashboard. Map pins include attempts.

Area 5 – Accomplishments

- Focused on intelligence-led policing and capturing the most violent offenders
- Increased presence in areas where retaliatory shootings occurred
- Increased presence on Hegenberger Rd. and 98th Ave. due to serious increase in locked auto burglaries
- Made public safety stops and towed vehicles a part of every day patrol

Area 5 – Trends and Challenges

- **Trend:** In 2019, Area 5 experienced a nearly 90% increase in locked auto burglaries
 - **Challenge:** Many Area 5 auto burglary hotspots are adjacent to the airport. When victims stop at nearby establishments, their vehicles (often rentals) are burglarized.
 - **Challenge:** When and if a suspect is arrested, victims have often returned to home and are unable to assist with prosecution.
 - **Challenge:** Apprehending suspects often necessitates pursuit, which is prohibited for this type of offense, or air support, which may not be readily available.
 - **Challenge:** Prosecution of non-violent felonies often results in charges being dropped to misdemeanors.

Area 5 – Trends and Challenges (continued)

- **Trend:** Increase of negligent firearm discharges
 - **Challenge:** Saturday evenings are a popular time for this to occur; during the past six months, we have made several arrests, but the trend continues.

Area 5 – Goals

- Minimize shootings and prevent groups or gangs from terrorizing neighborhoods
- Decrease locked auto burglaries on Hegenberger Rd. and lower 98th Ave.
- Address quality-of-life issues by enforcing abandoned auto regulations
- Address speeding vehicles and out-of-control driving