

Oakland



San
Leandro

San Leandro Creek Trail Master Plan



**SAN LEANDRO CREEK
TRAIL MASTER PLAN**

City Council Presentation



Agenda

Project Background
Trail Benefits and Types
Proposed Alignments



**SAN LEANDRO CREEK
TRAIL MASTER PLAN**



A photograph of a creek flowing under a bridge. The bridge has a decorative railing with circular openings. The creek is surrounded by dense trees and foliage. In the foreground, there is a wooden bench and a trash can. The text "Project Background" is overlaid on the image in a large, bold, black font.

Project Background



**SAN LEANDRO CREEK
TRAIL MASTER PLAN**



Project Team

City of Oakland

City of San Leandro

Rails-to-Trails Conservancy

Merritt College

Stakeholders

Stantec

Circlepoint



**SAN LEANDRO CREEK
TRAIL MASTER PLAN**

Project Background



Stantec

Project Origin

- Friends of San Leandro Creek founded in 1998
- Merritt College Environmental Management Program
- San Leandro Creek Alliance



Grant Background & Project Partners

- Caltrans Grant: Partnership Planning for Sustainable Transportation
- Grant for feasibility study and master plan
- Grant Amount: \$201,510
- Completion Date: March, 2017
- Grant Partners: City of San Leandro (grantee), City of Oakland (subgrantee), RTC (subgrantee)
- Project Partners: Merritt College



Current Project Steps and Schedule

Task 1: Data Collection and Analysis



Nov '15 to Apr '16

Task 2: Public Outreach and Meetings



Nov'15 to Sept'16

Task 3: Plan Development



July'16 to Nov'16

Task 4: Plan Presentation



Jan '17 to March '17

Grant Completion



March 31, 2017



**SAN LEANDRO CREEK
TRAIL MASTER PLAN**

Project Background



Stantec

Community Engagement

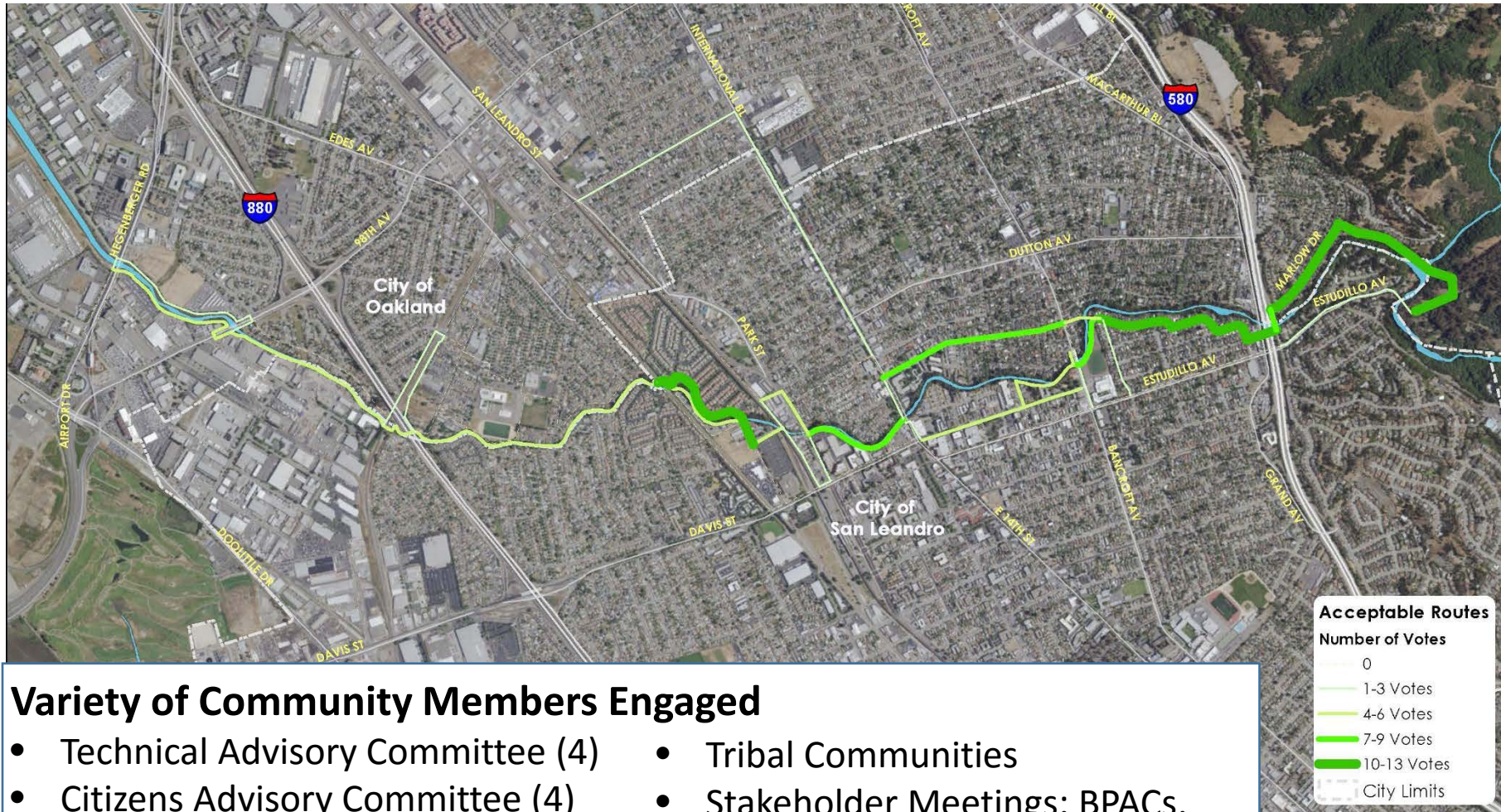


**SAN LEANDRO CREEK
TRAIL MASTER PLAN**

Proposed Alignments



Final Alignment Preferences



Variety of Community Members Engaged

- Technical Advisory Committee (4)
- Citizens Advisory Committee (4)
- Public Workshops (3)
- Community Survey
- Tribal Communities
- Stakeholder Meetings: BPACs, Earth Day, Science Classes, HOAs, Cycling Clubs, Senior Commission



**SAN LEANDRO CREEK
TRAIL MASTER PLAN**

Community Engagement



Proposed Alignments

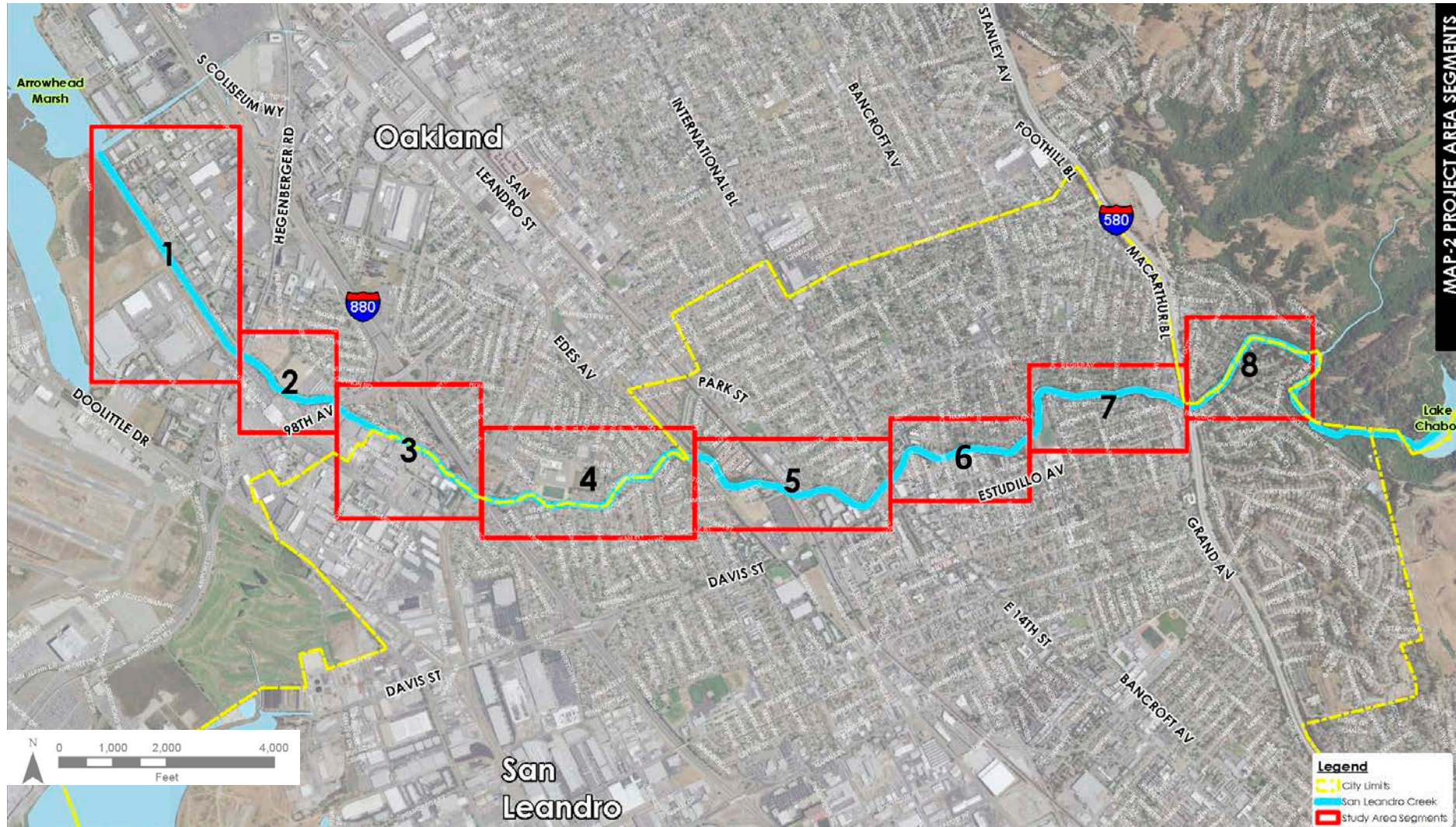


**SAN LEANDRO CREEK
TRAIL MASTER PLAN**

Proposed Alignments



Segment Map



SAN LEANDRO CREEK
TRAIL MASTER PLAN

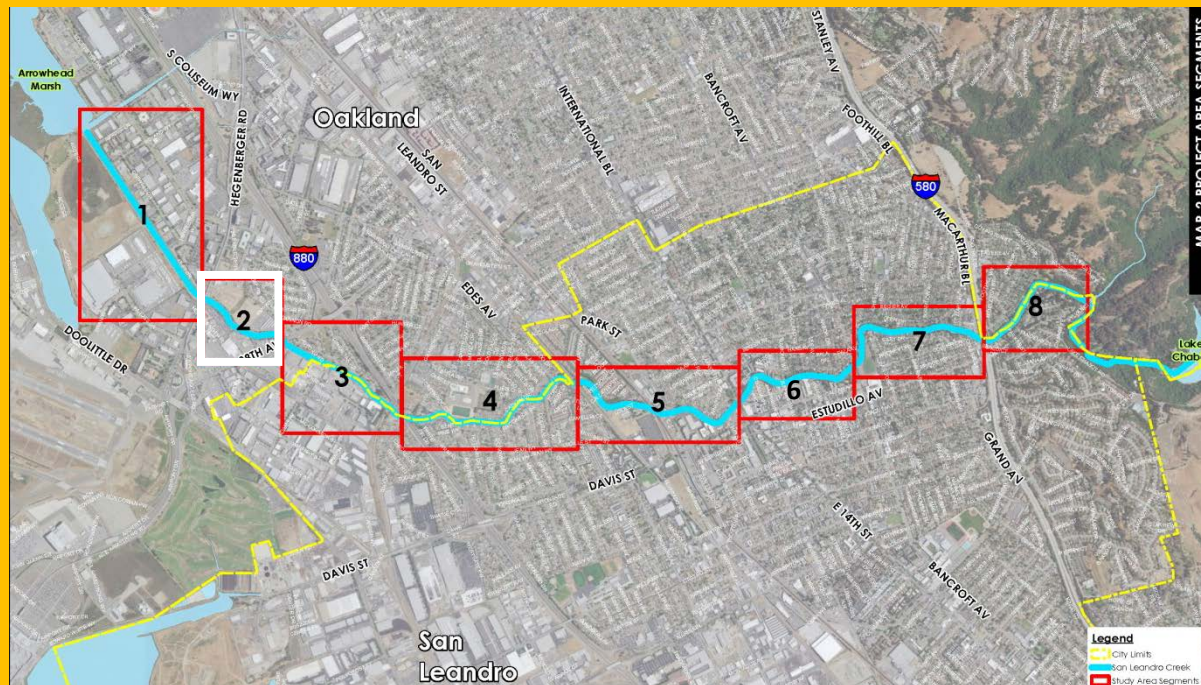
Proposed Alignments



Route Alternatives Criteria

- The route will traverse alongside San Leandro Creek and take advantage of scenic views where feasible.
- The route will avoid privately owned land.
- The route will utilize existing and planned bikeways, maintenance facilities, trails and public land where possible.
- The route will connect maximum destinations, businesses and schools along its way finally terminating at the Chabot Park/ dam.
- Public Support and Opposition

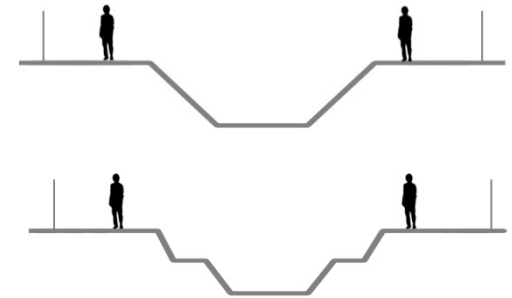
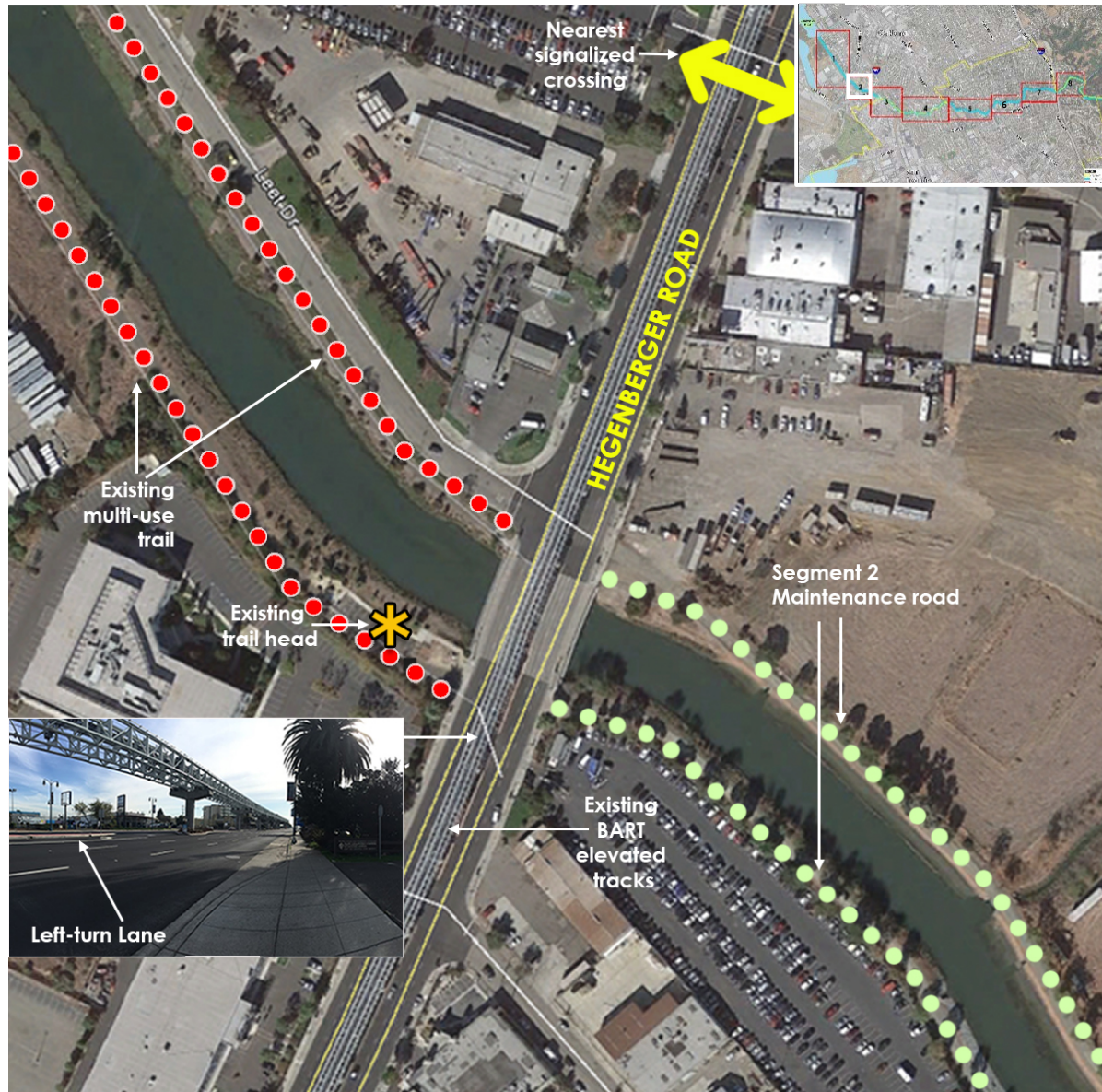




Segment 2: Hegenberger Road to 98th Avenue

Segment 2: Existing Conditions

Hegenberger Road to 98th Avenue

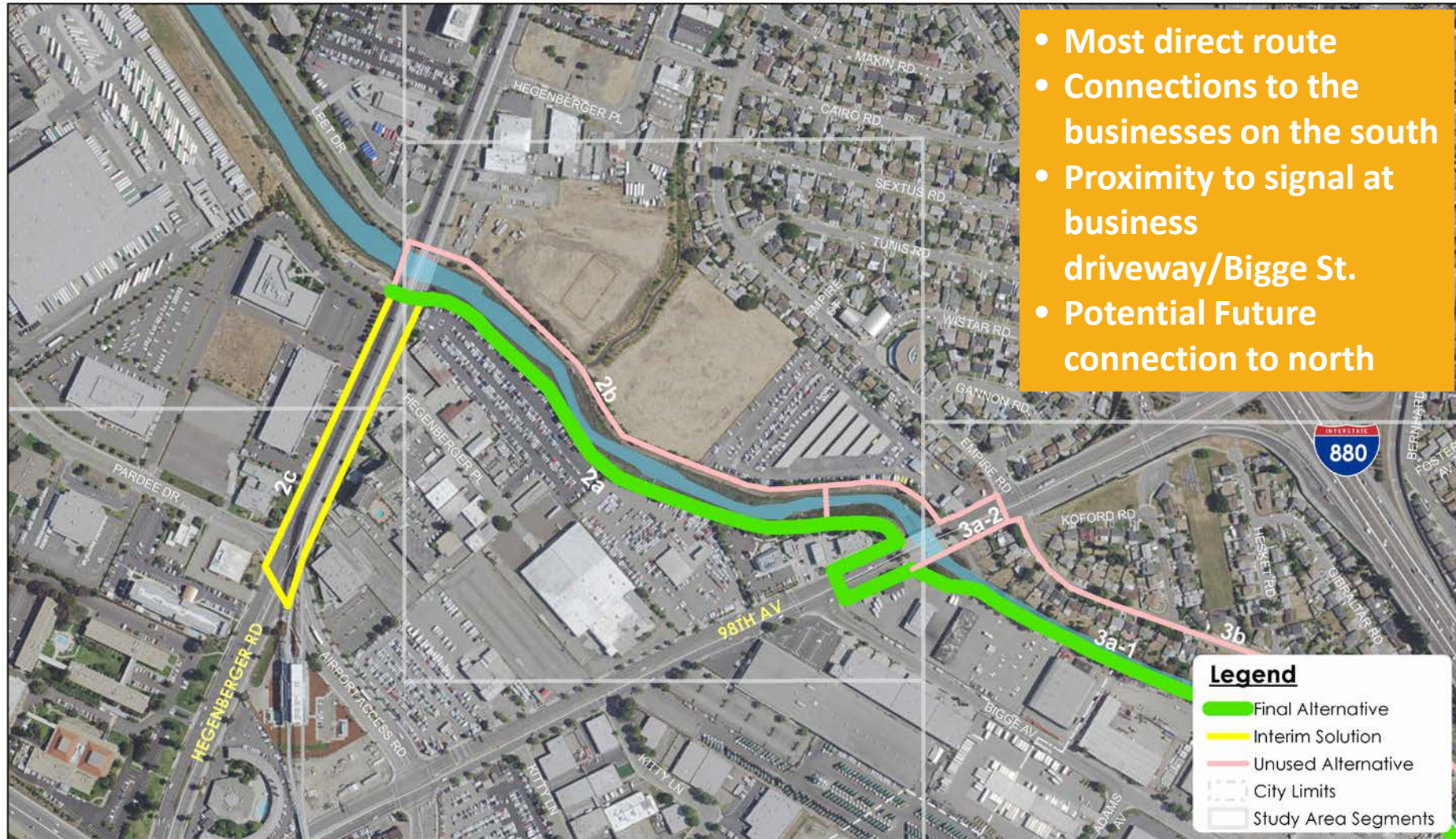


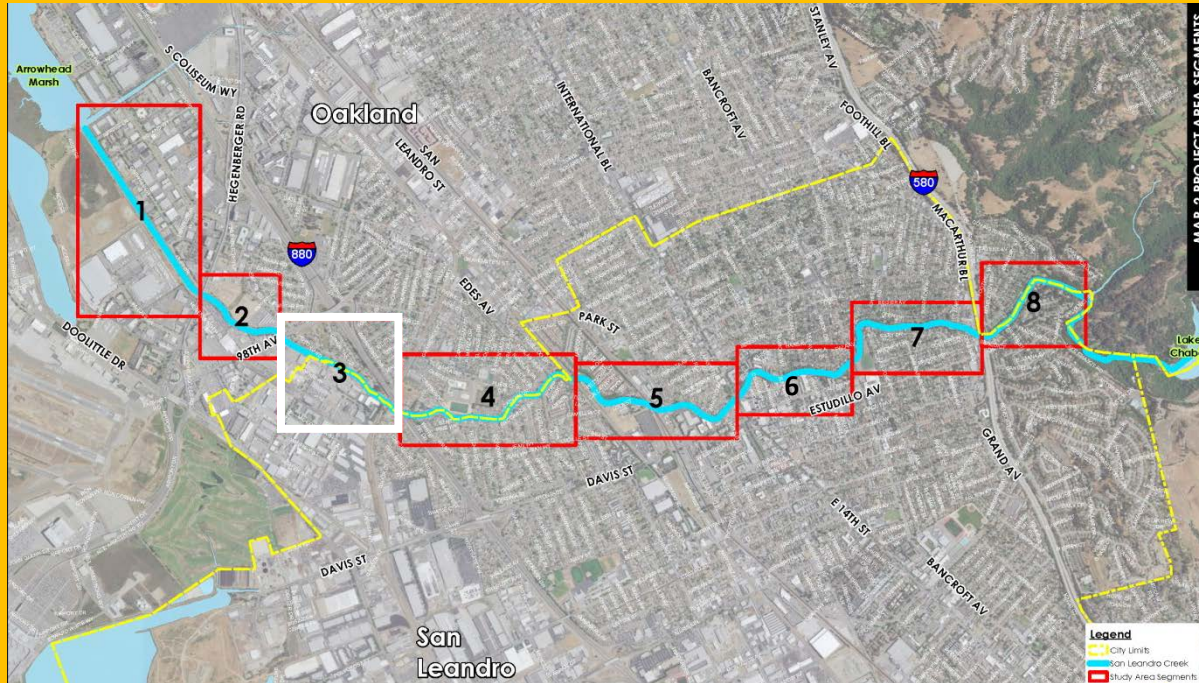
**SAN LEANDRO CREEK
TRAIL MASTER PLAN**

Proposed Alignments



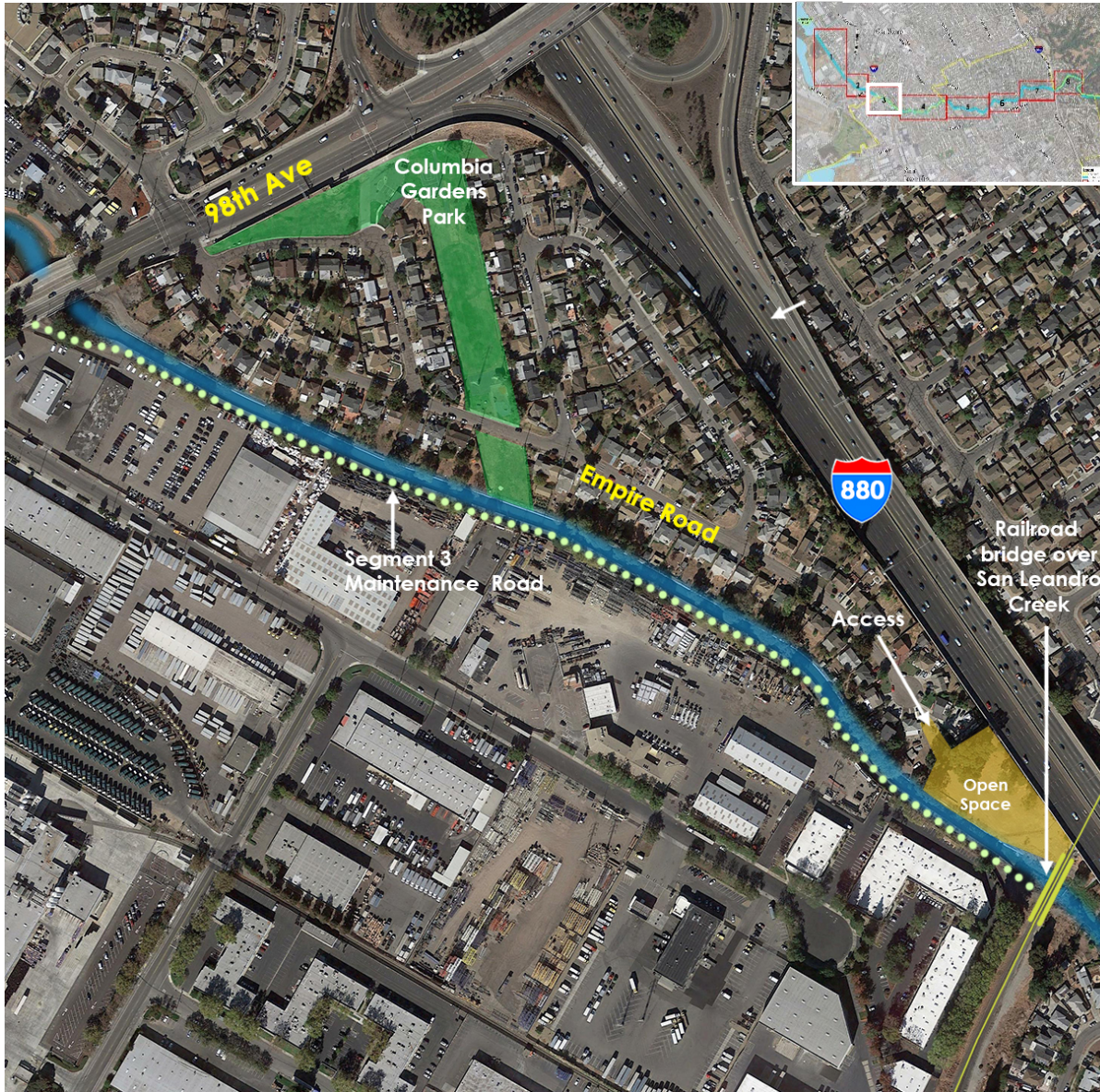




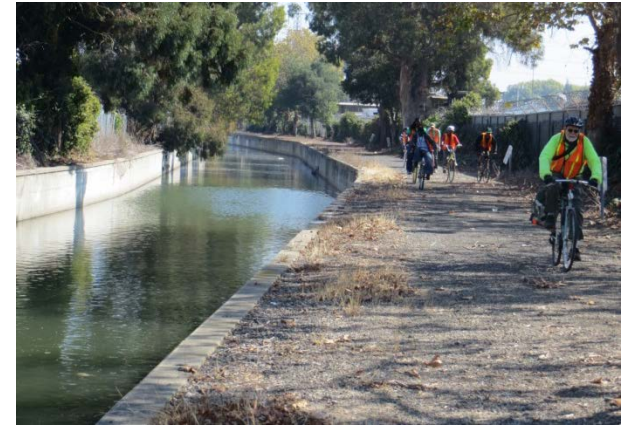


Segment 3: 98th Avenue to Railroad

Segment 3: Existing Conditions



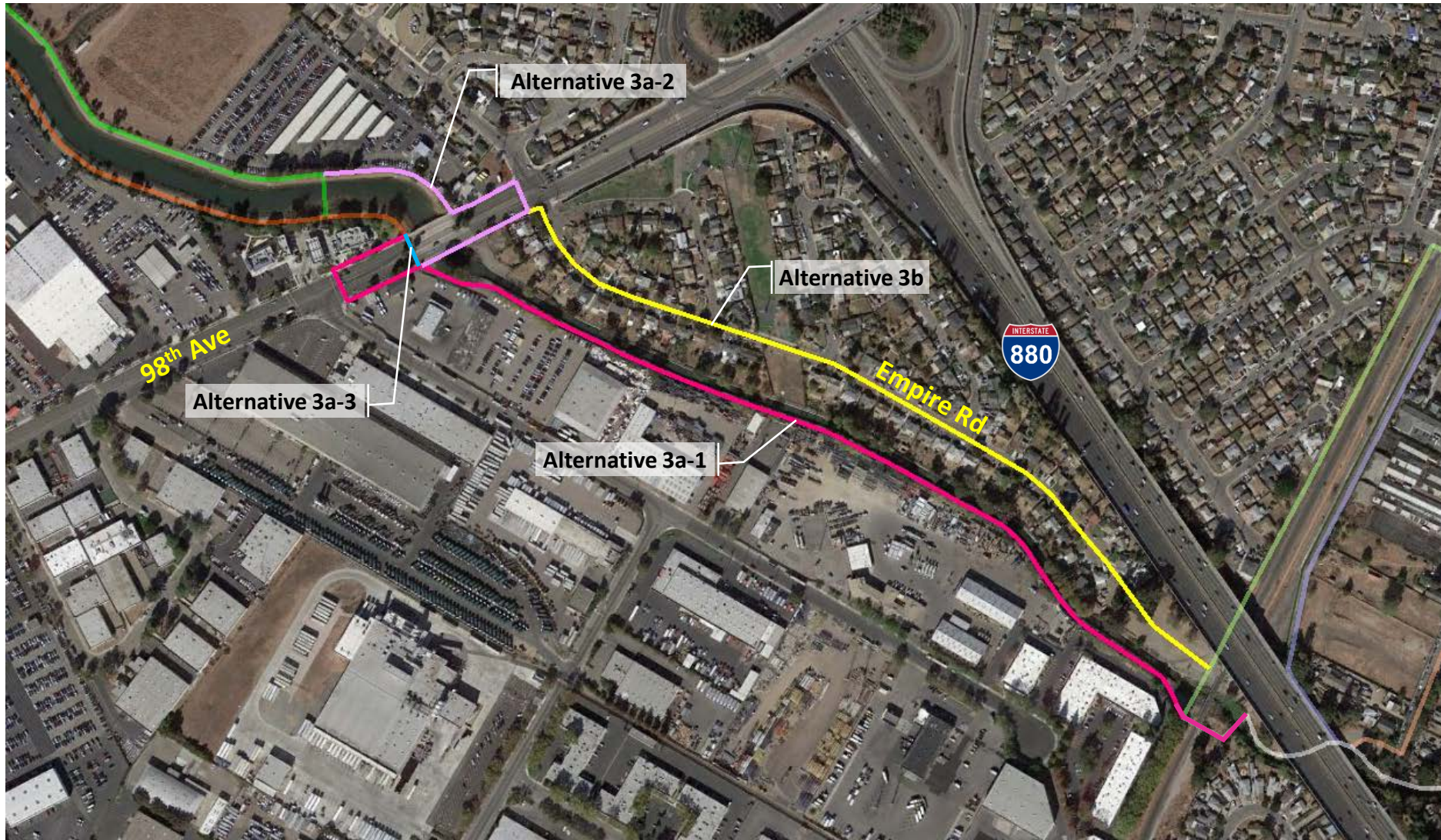
98th Avenue to Railroad

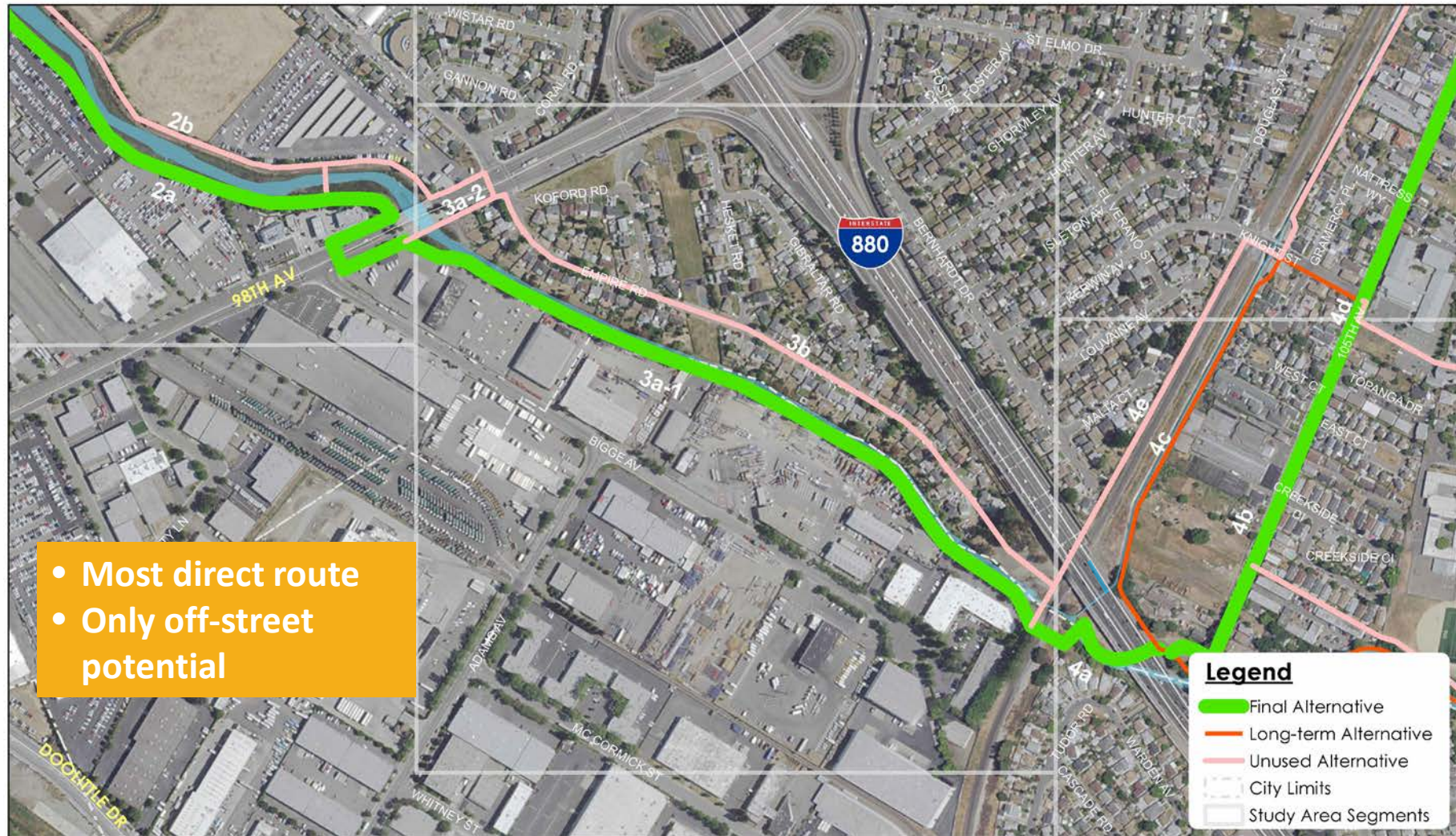


SAN LEANDRO CREEK
TRAIL MASTER PLAN

Proposed Alignments



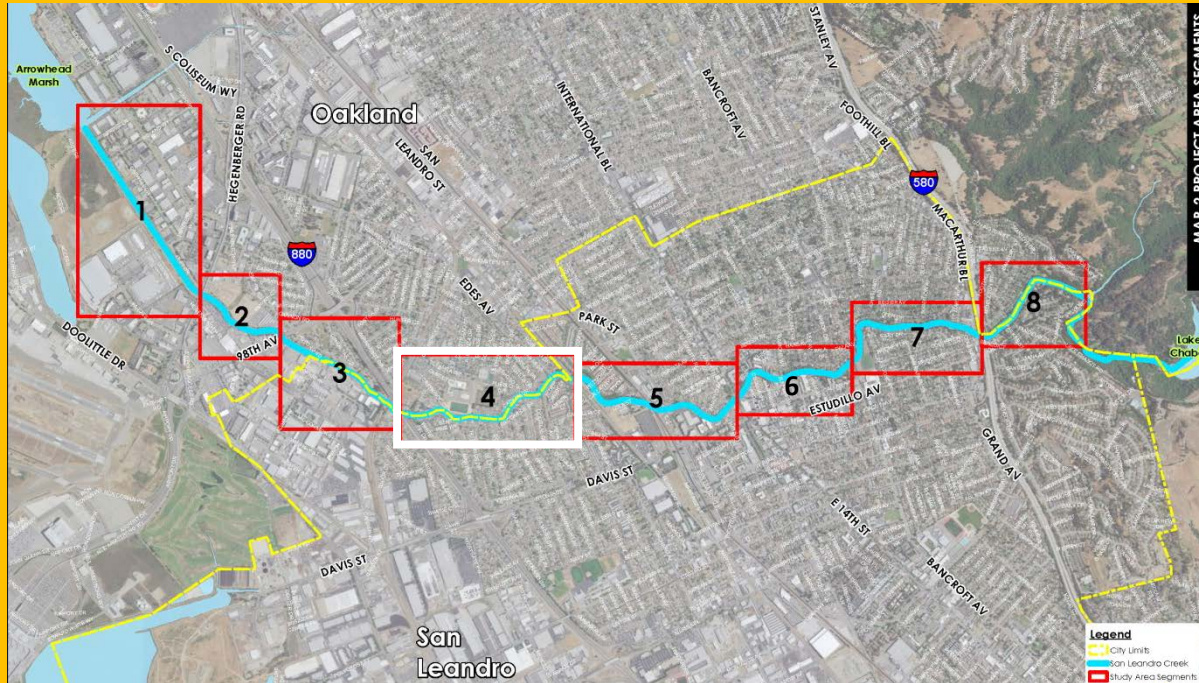




- Most direct route
- Only off-street potential



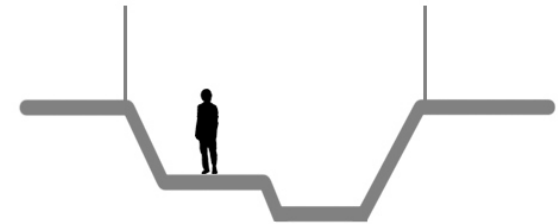
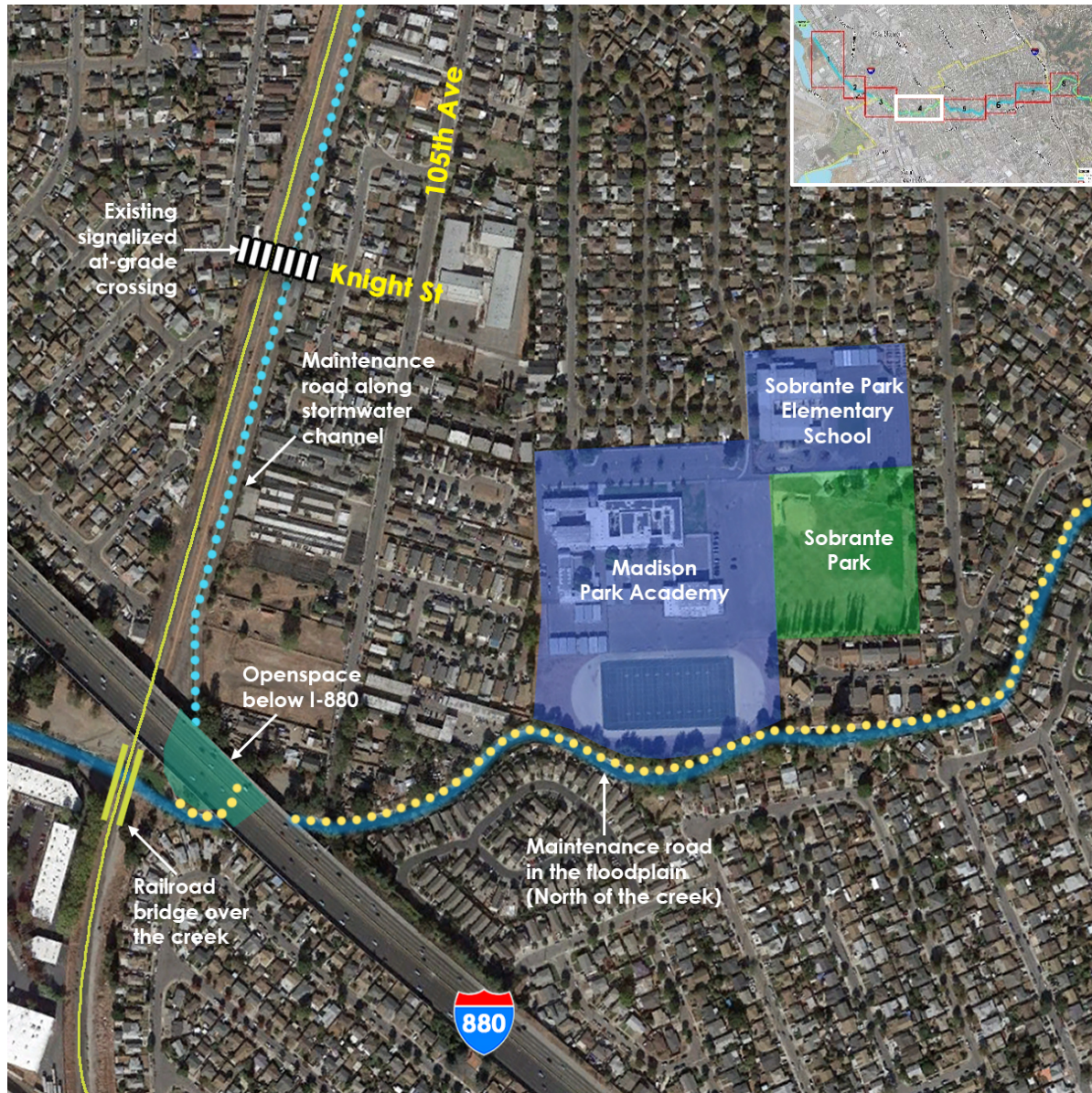




Segment 4: Railroad to BART

Segment 4: Existing Conditions

Railroad to BART



**SAN LEANDRO CREEK
TRAIL MASTER PLAN**

Proposed Alignments





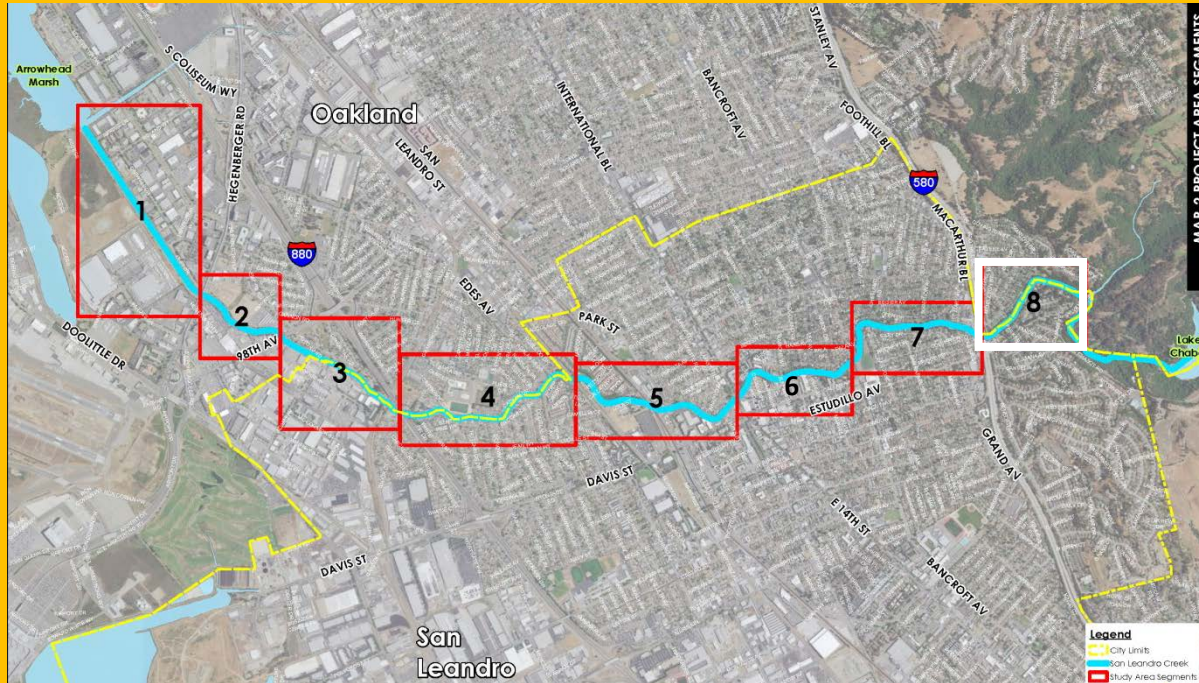




**SAN LEANDRO CREEK
TRAIL MASTER PLAN**

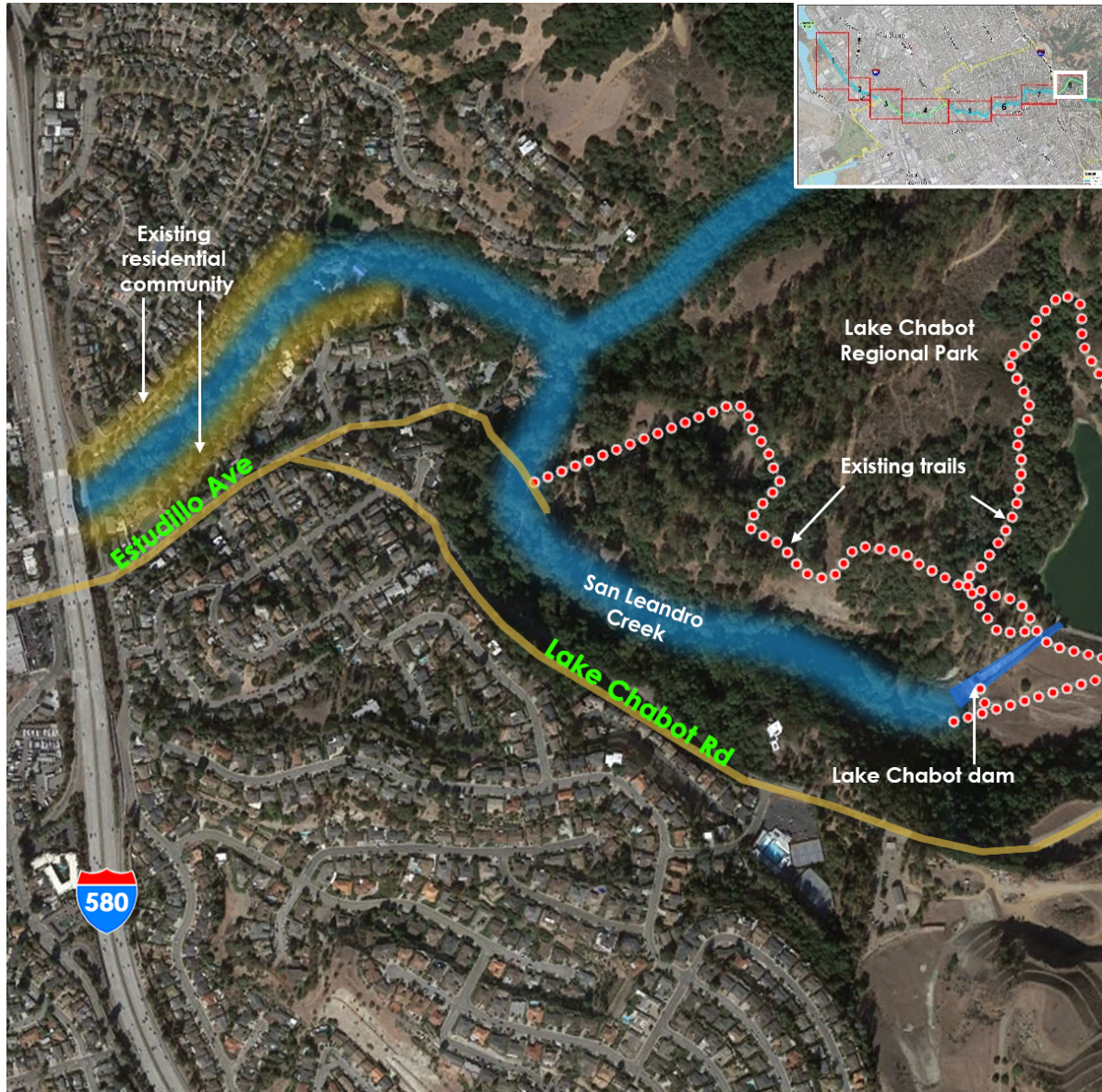
Photo Simulation

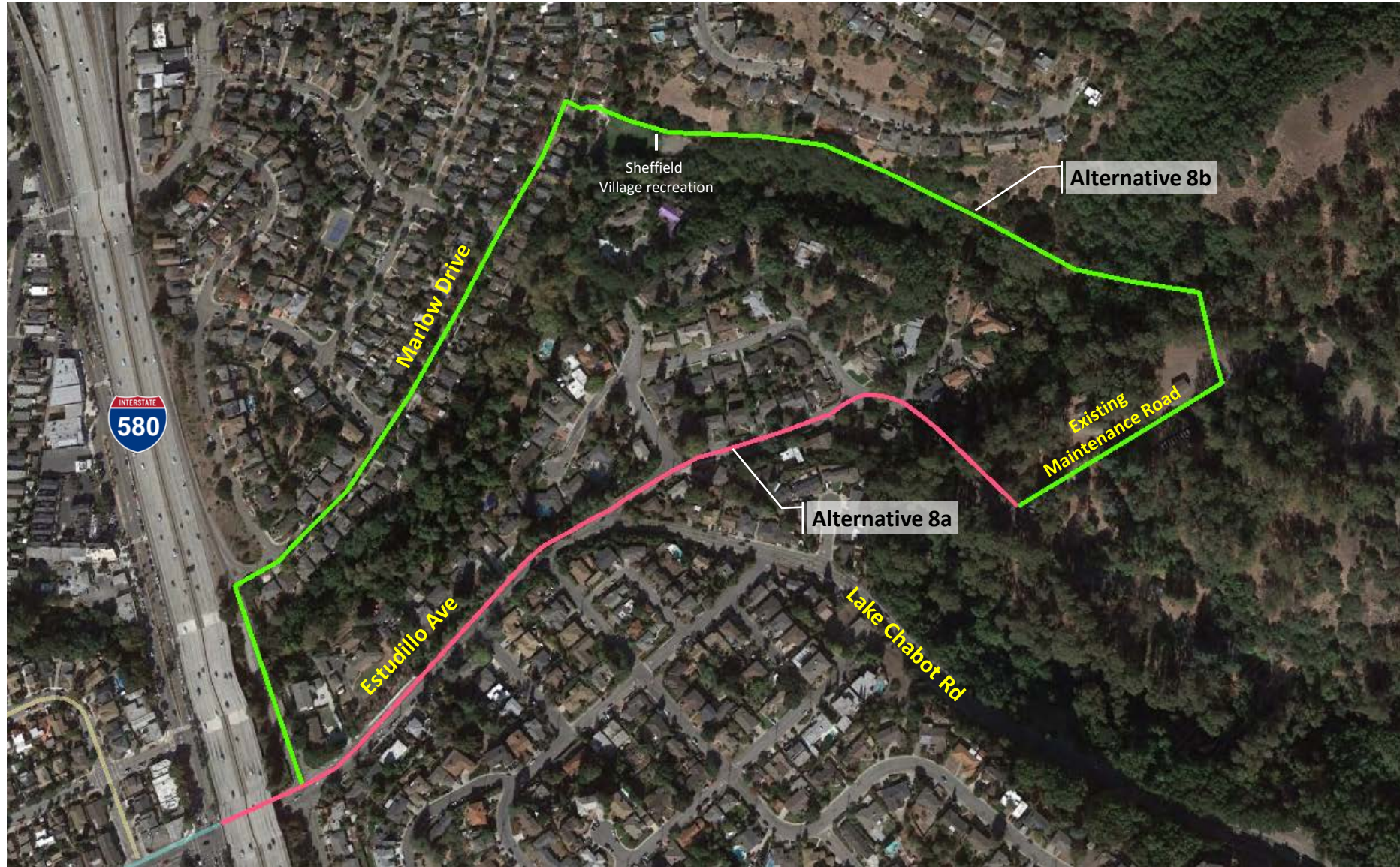




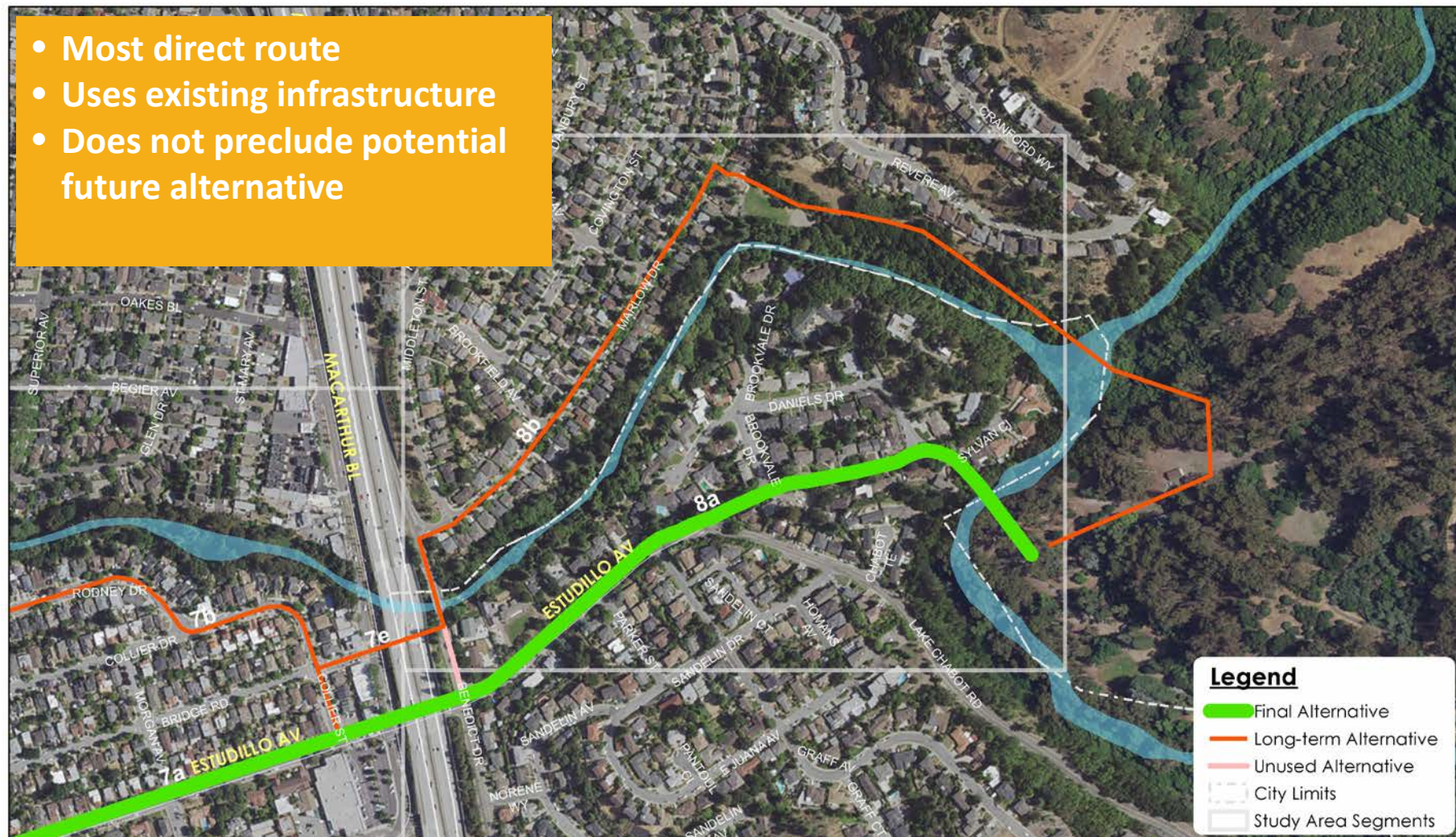
Segment 8: I-580 to Lake Chabot Park



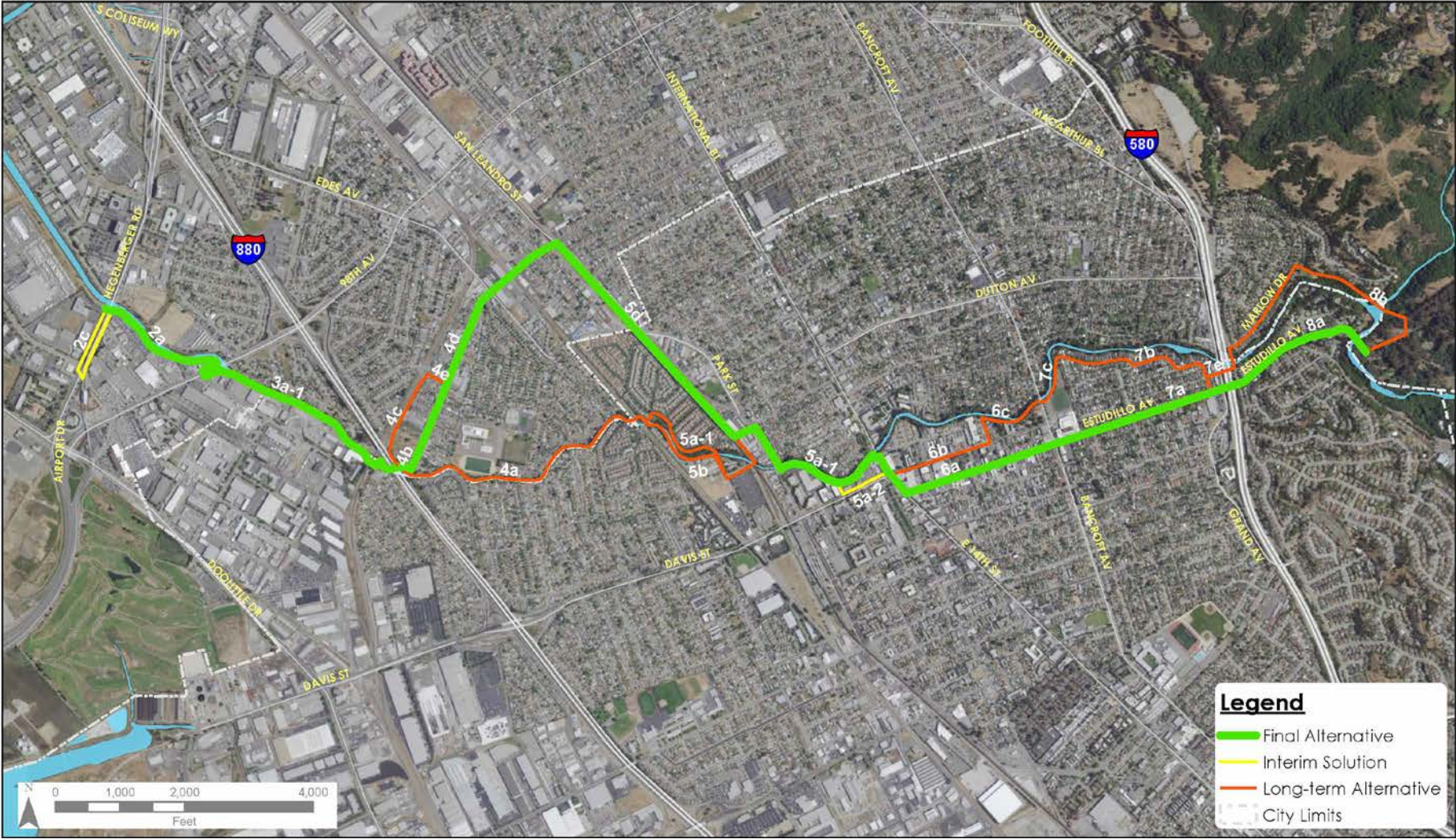




- Most direct route
- Uses existing infrastructure
- Does not preclude potential future alternative

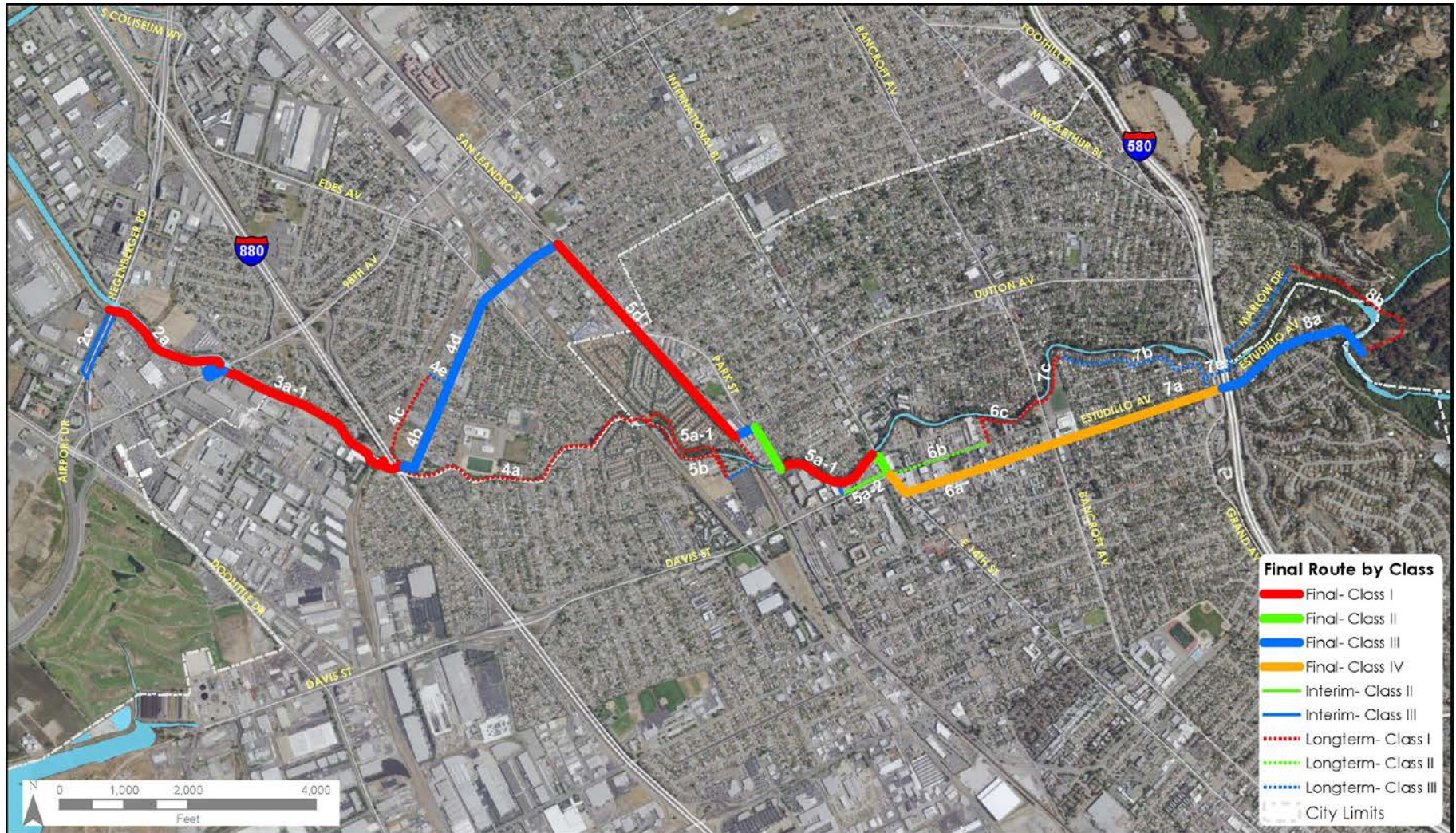


Segment Map



Final Recommended Route

Facility Type



Questions & Comments?



**SAN LEANDRO CREEK
TRAIL MASTER PLAN**



Stantec