

Oakland General Plan Update 2045

Presentation to the
Community and
Economic
Development (CED)
Committee

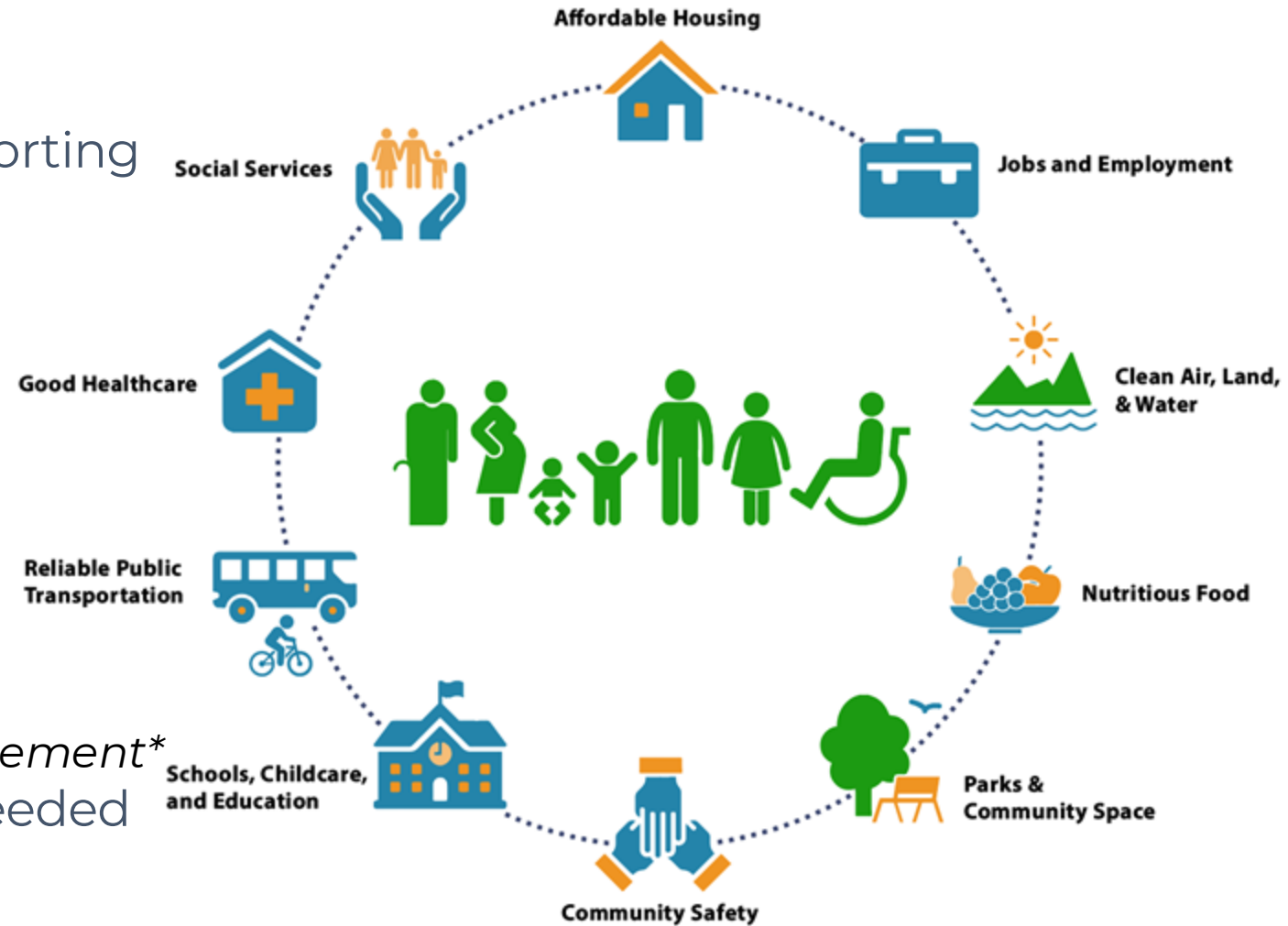


OAKLAND 2045
GENERAL PLAN

May 24, 2022

General Plan Background

- "Constitution" for development and conservation.
- Establishes citywide vision and supporting goals, policies, and implementation measures.
- Minimum required Elements
 - Land Use
 - Circulation
 - Housing
 - Conservation
 - Open Space
 - Noise
 - Safety
 - Environmental Justice - **New Requirement**
- Other Elements may be added, as needed
 - Infrastructure and Facilities
- 2-Phased Approach
 - Phase 1 – Nov 2021 – Early 2023
 - Phase 2 – Early 2023 – Mid 2025



Map Atlas and Equity Baseline



Document baseline conditions and existing inequities in Oakland

Building on recent City and community efforts, summarized in one place

Geographically (various scales) + Additional factors (e.g., disaggregated by race)



Inform EJ development

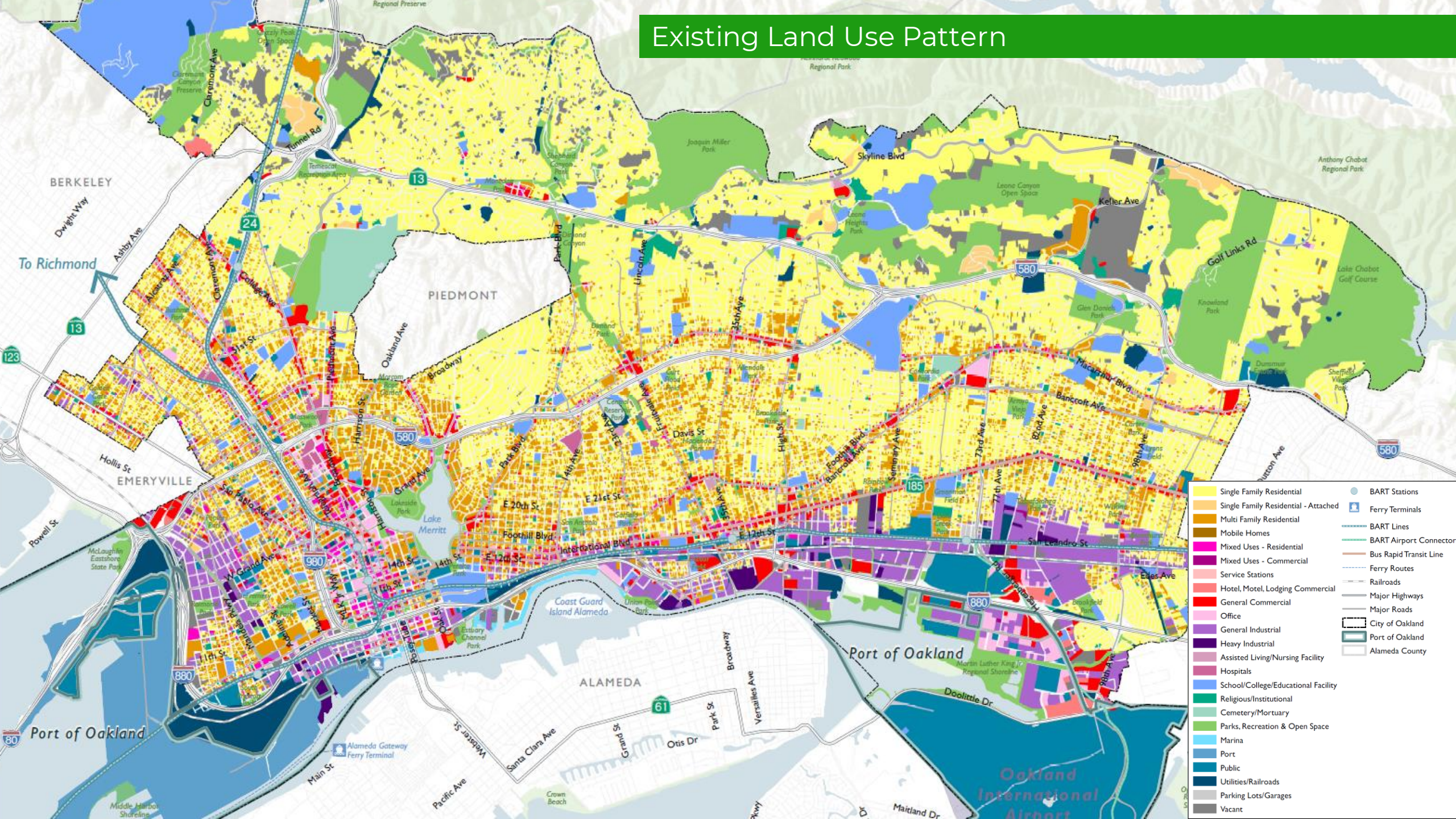
Policies for the EJ Element, as well as across the General Plan, that will address these inequities



Provide data to ground-truth with community

Upcoming community engagement to identify environmental justice communities

Existing Land Use Pattern



Issues Explored in the Equity Baseline

BACKGROUND

- **Race**
- **Income/Poverty**
- **Health Outcomes:**
 - Coronary Heart Disease.
 - Diabetes
 - Kidney Disease
 - Obst. Pulmonary Disease.
 - Cancer Mortality
 - Life Expectancy
 - Low Birth Weight
 - Adult Asthma
 - Stroke
 - Adult Obesity
- **Cultural Assets**

ENVIRONMENTAL HEALTH

- **Sensitive Land Uses**
- **Geologic/Seismic Haz.**
- **Air Quality:**
 - Pollution Sources
 - PM2.5
 - Diesel
 - NO2 (Conc. & Mortality)
 - Cancer Risk
- **Water Quality:**
 - Groundwater Threats
 - Impaired Water
- **Haz. Materials Sites**
- **Illegal Dumping**
- **Climate Change:**
 - Urban Forestry
 - Urban Heat Island
 - Sea Level Rise
 - Fire/Smoke Threats

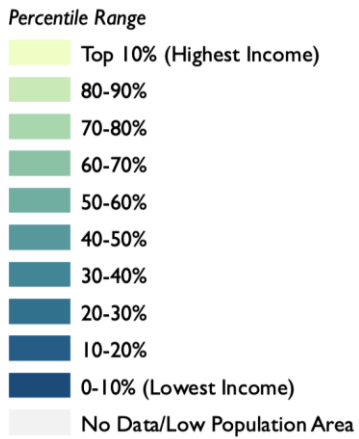
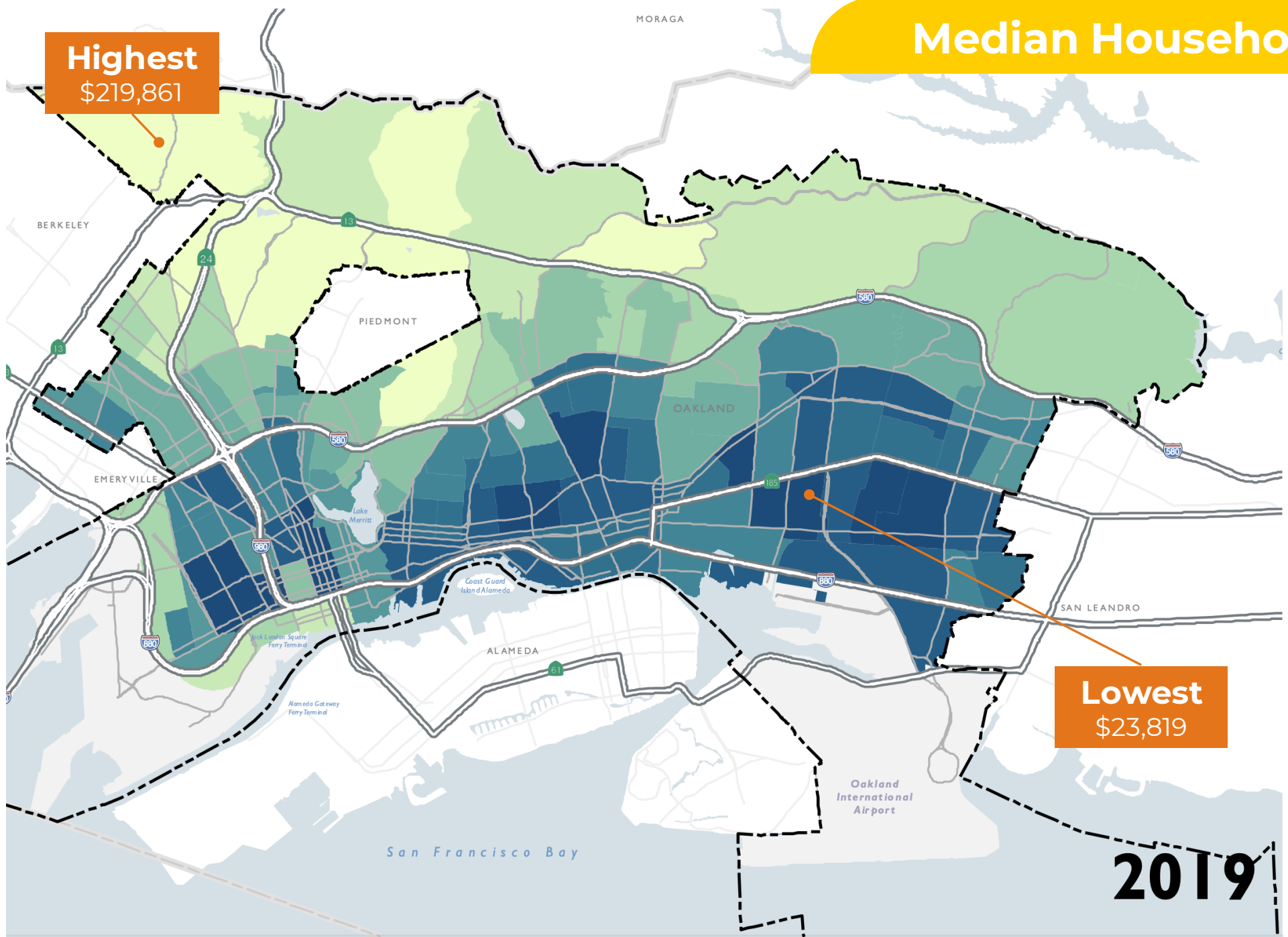
NEIGHBORHOOD - BUILT ENVIRONMENT

- **Housing:**
 - Homeownership
 - Habitability/Quality
 - Housing Burden
 - Eviction
 - Affordability
 - Displacement/Gentrif.
 - Homelessness
- **Mobility & Safety:**
 - Bike Network
 - Walkability
 - High Injury Network
 - Crashes (all)
 - Vehicle Ownership
 - Transit Commutes
- **Public Facilities:**
 - Energy Cost Burden
 - CIP 2021-23
 - Park Access
- **Food Access/Security**

SOCIAL - COMMUNITY ENVIRONMENT

- **Community Stressors:**
 - Police Use of Force
 - Violent Crimes
- **Economy & Education:**
 - Business Ownership
 - Emp. in top sectors
 - OUSD Student Perf.
 - High-Wage Emp.
 - Educ. Attainment
- **Civic Engagement:**
 - Diversity of Electeds
 - Limited English
 - Internet Access

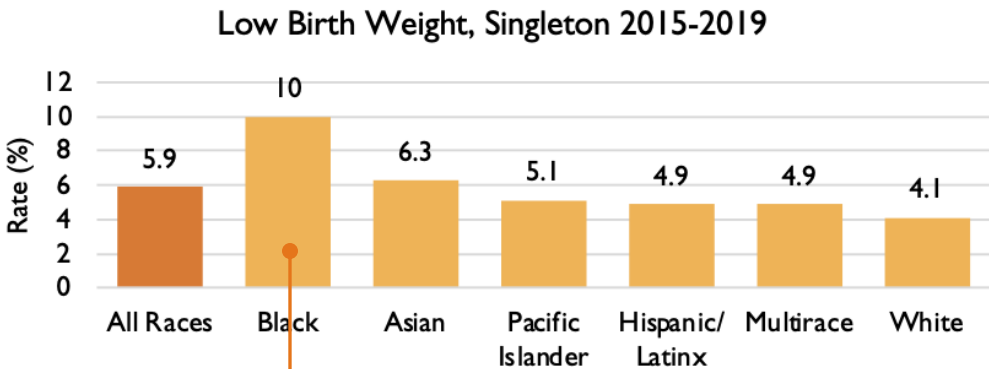
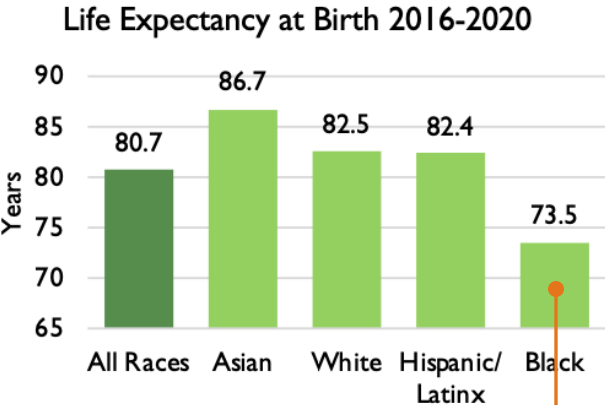
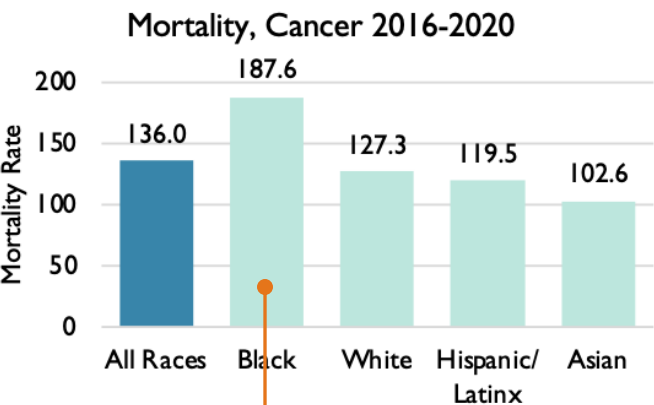
Median Household Income



2019

Health Inequities

Chart 2-3: Difference in Health Outcomes by Race



Note: Pacific Islander, Native American/Alaskan, and Multirace populations are included in "All Race" but are not disaggregated due to the small size (less than 10 people) of these groups.
Sources: Alameda County Public Health department, 2021; Dyett & Bhatia, 2022

Most Impacted

Most Impacted
2018 Equity Score: 77
(Data above would result in 76 = worse)

Most Impacted

Purpose of the DRAFT EJ Communities Map



The first step in SB1000 Environmental Justice planning process:

Identify environmental justice communities that are low-income areas and disproportionately impacted by pollution burden.



Target EJ Objectives and Policies Development

Policies in the Environmental Justice Element must reduce the unique or compounded health risks in EJ Communities.



This is a Starting Place for Conversation with EJ Communities

Offer a current snapshot of conditions in the city as required by SB1000. This is not enough. It is a starting place for conversations with the most impacted communities with the greatest unmet need.

Oakland's SB 1000 Screening Approach

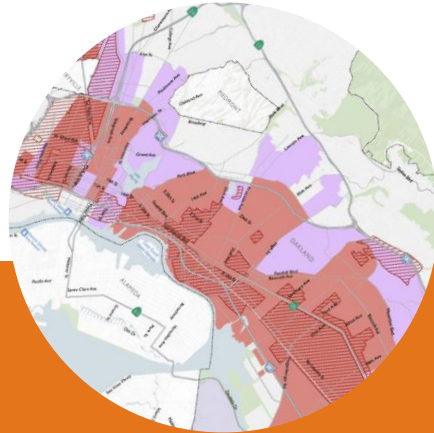


CalEnviroScreen 4.0 (2021)

Environmental Pollution
Burdens

Sensitive/Vulnerable
Populations

Especially Top 25% of
scores (SB 535)



Low-Income Areas

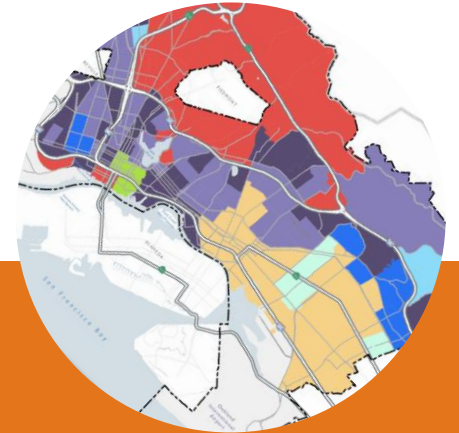
At or below:
80% of statewide median
or

State HCD Low-Income
limit (80% Alameda
County Area Median
Income)



SB 1000 Topic Areas

Pollution Exposure & Air Quality
Unique/Compounded Health Risks
Safe & Sanitary Homes
Public Facilities Access
Physical Activity
Healthy Food Access
Civic Engagement
Investment Prioritization



Local Indicators

Race
Redlining
Oakland Equity Indicators
(DRE 2018)
OakDOT Geographic
Equity Toolbox
and more...

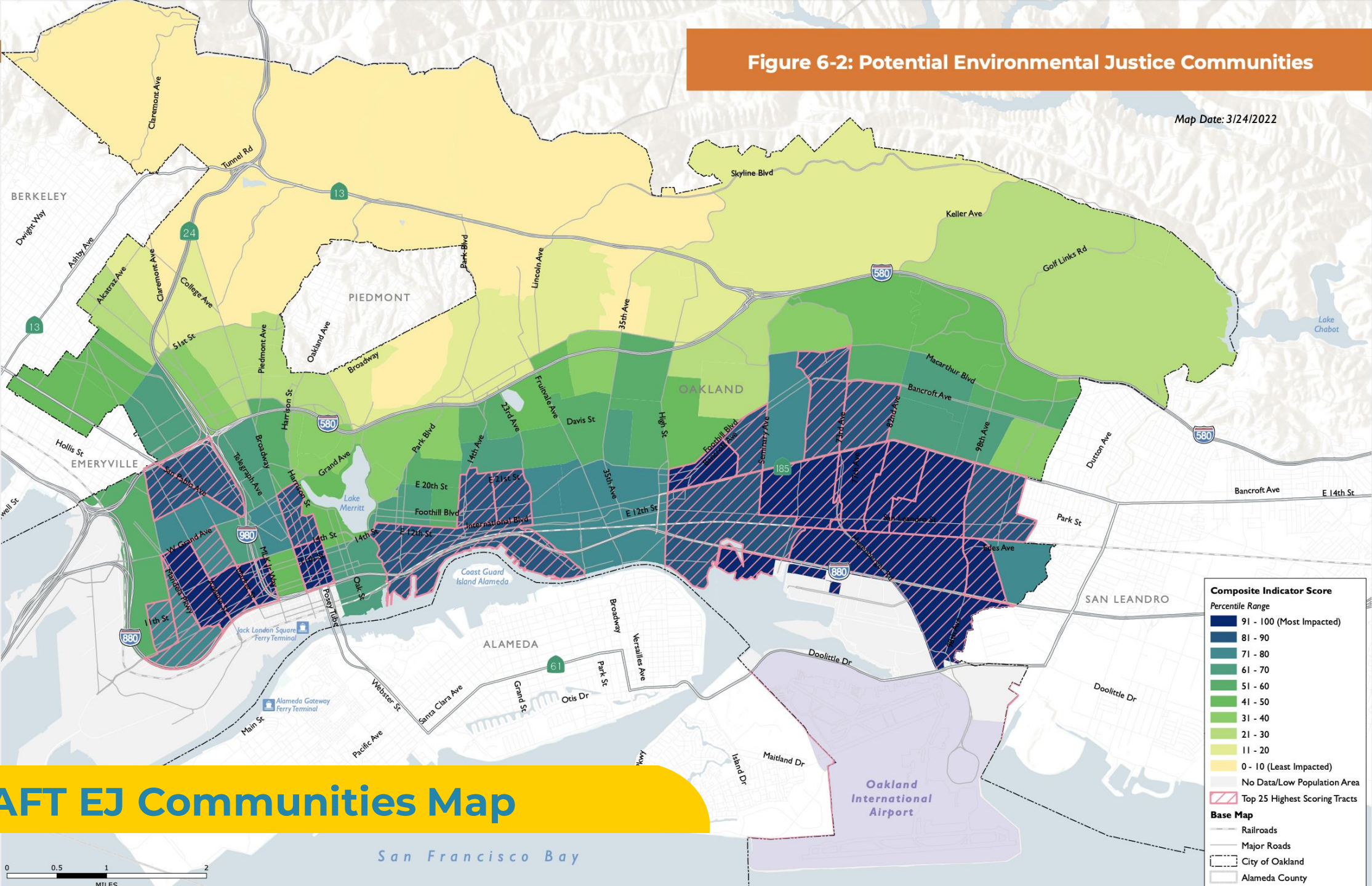
EJ Index Categories and Topics

Category	Weight	Topic
Race & Poverty	25%	People of Color
		Low Income
Pollution Burden	25%	Air Quality
		Water Quality
		Hazardous Materials
		Climate Change
Sensitive Populations	25%	Health
		Socioeconomic
Built Environment	25%	Active Transportation
		Food Access
		Safe and Affordable Homes
		Neighborhood



Figure 6-2: Potential Environmental Justice Communities

Map Date: 3/24/2022

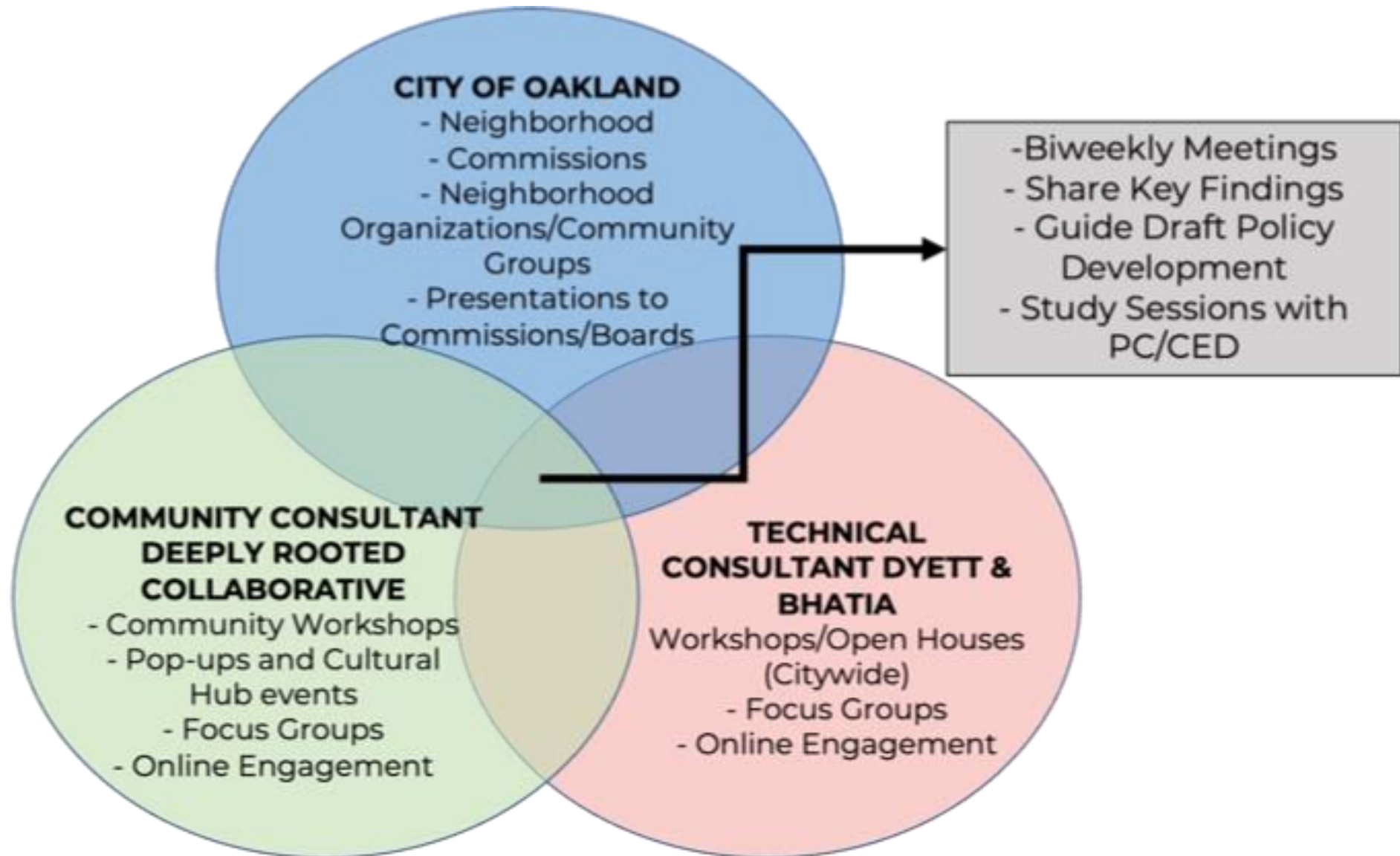


DRAFT EJ Communities Map

0 0.5 1 2
MILES

San Francisco Bay

Community Engagement Approach



Community Engagement Events



A. "Karriem" Khan, @ak2webd3, and Jessica Lee, @jessicazylee, discuss their vision for Oakland's future @oaklandasiancc.



Left to Right: Community Healing (Black Arts Movement Business District, Community Development Corporation), Asian Pacific New Year Pt 1 (Oakland Asian Cultural Center), Hoover Elementary, Fruitvale (Just Cities), Akoma (EastSide Arts Alliance) Asian Pacific New Year Pt 2 (Oakland Asian Cultural Center), Open House at East Oakland Senior Center

Deeply Rooted in Oakland Partnership

Geographies	Partners
West Oakland	House/Full of Black Women, Black Arts Movement Business District CDC, and West Oakland Environmental Indicators Project
Fruitvale	The Unity Council and CURYJ
Chinatown	Oakland Asian Cultural Center
East Oakland	Black Cultural Zone
Across Oakland	<ul style="list-style-type: none">• The Village is outreaching to unhoused curbside communities in North Oakland, West Oakland, Downtown and East Oakland.• Lao Family Community Development outreaches to Southeast Asian residents.• EastSide Arts Alliance reaches residents through their cultural events and activities.• Malonga Arts Residents Association reaches Black and Brown communities..

COMMUNITY ENGAGEMENT FOR OAKLAND’S MOST IMPACTED RESIDENTS

- Low-income class communities of color
- Unhoused residents
- Older Adults
- Formerly incarcerated
- Youth
- Communities experiencing environmental injustices

Deeply Rooted Events (November 2021 - April 2022)

Reach: 1,190 residents

- **Outreach Events (22):**

- 18 pop-ups
- 2 cultural hub event
- 2 workshops on Housing and Environmental Justice

- **Deep Listening Sessions:**

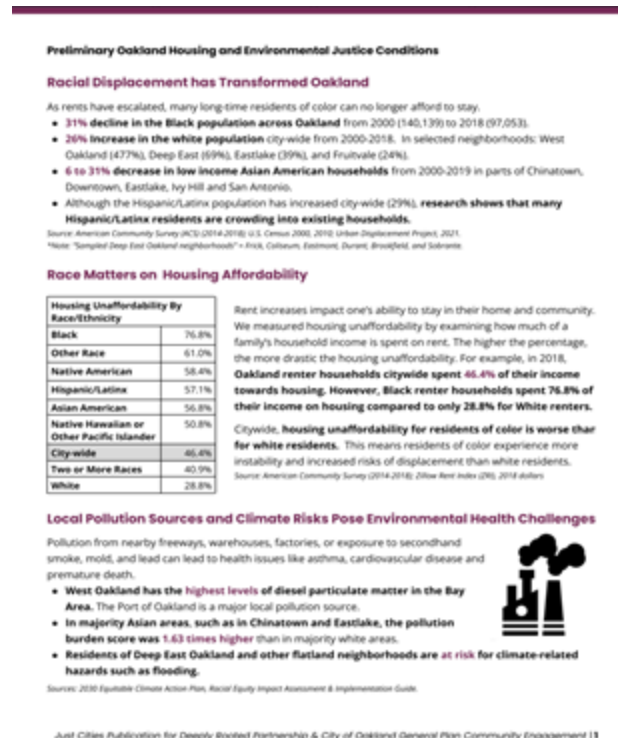
- West Oakland conversations (House/Full of Black Women)
- Unhoused residents (The Village)

Locations: Chinatown, Downtown, Eastmont, Fruitvale, North Oakland, San Antonio, and West Oakland

Race/Ethnicity	Count	Percent
Latinx	175	15%
Black	179	15%
Asian American	147	12%
White	31	3%
Multiracial	20	2%
Middle Eastern	3	0.3%
Other	2	0.2%
Native Hawaiian/Pacific Islander	2	0.2%
Native American/Indigenous or Alaska Native	2	0.2%
Caribbean Islander	0	0%
No Race/Ethnicity Collected/Selected	629	53%
Total	1,190	

Transformative Planning: Community Education and Resources

- Asian Americans in Oakland Zine
- Preliminary Oakland Housing and Environmental Justice Conditions 2-pager
- Housing and EJ Workshops
- Share City & Nonprofit Human Needs Resources



Transformative Planning: Equity Working Group and Youth Engagement

- **Convening Equity Working Group (EWG)** made up of 20 diverse residents to:

1) **Identify** the major challenges and impacts of the General Plan (housing, safety, environmental justice, land use, transportation, and parks) and

2) **Advocate** for solutions that advance equitable and healthy communities for Oakland residents.

<https://www.oaklandca.gov/news/2022/general-plan-equity-working-group-members-selected>

HELP SHAPE OUR OAKLAND!

DEEPLY ROOTED FELLOWSHIP
We Want You !!

OAKLAND 2045 GENERAL PLAN

Stipend Included!

REQUIREMENTS TO APPLY:
Ages 14-24
Up to 2 year commitment
Approx \$25/hr stipend

The Deeply Rooted Fellowship is recruiting young leaders to help with community outreach and engagement for the Oakland General Plan update. Fellows will learn city planning concepts/tools and build leadership skills through hands-on work including: speaking at community meetings/events, hosting pop-ups, social media outreach, and other activities

TO APPLY GO TO:
<https://tinyurl.com/OGPFellowship>
OR USE THIS QR CODE!

FELLOWSHIP APPLICATION DEADLINE
Deadline: May 27, 2022 @ 5:00pm

Housing Community Policy Ideas in response to Priority Needs

Building Affordable Housing

1. Public Land for 100% Affordable Housing (not market rate)
2. Increase Housing Impact Fees
3. Prioritize Housing for Formerly Incarcerated People, Youth Aging out of foster care, low-income elderly, & single parents with children

Preserving Affordable Housing

1. Housing Commission & Neighborhood Planning Councils
2. Moratorium on market rate housing b/c of market force displacement

Protecting Existing Residents

1. Racial Equity/Human Health/Socioeconomic Impacts Analysis of all market rate projects
2. Implement the Healthy Development Guidelines
3. Cultural District/Anti-Displacement Zones
4. Stopping Encampment Management policy

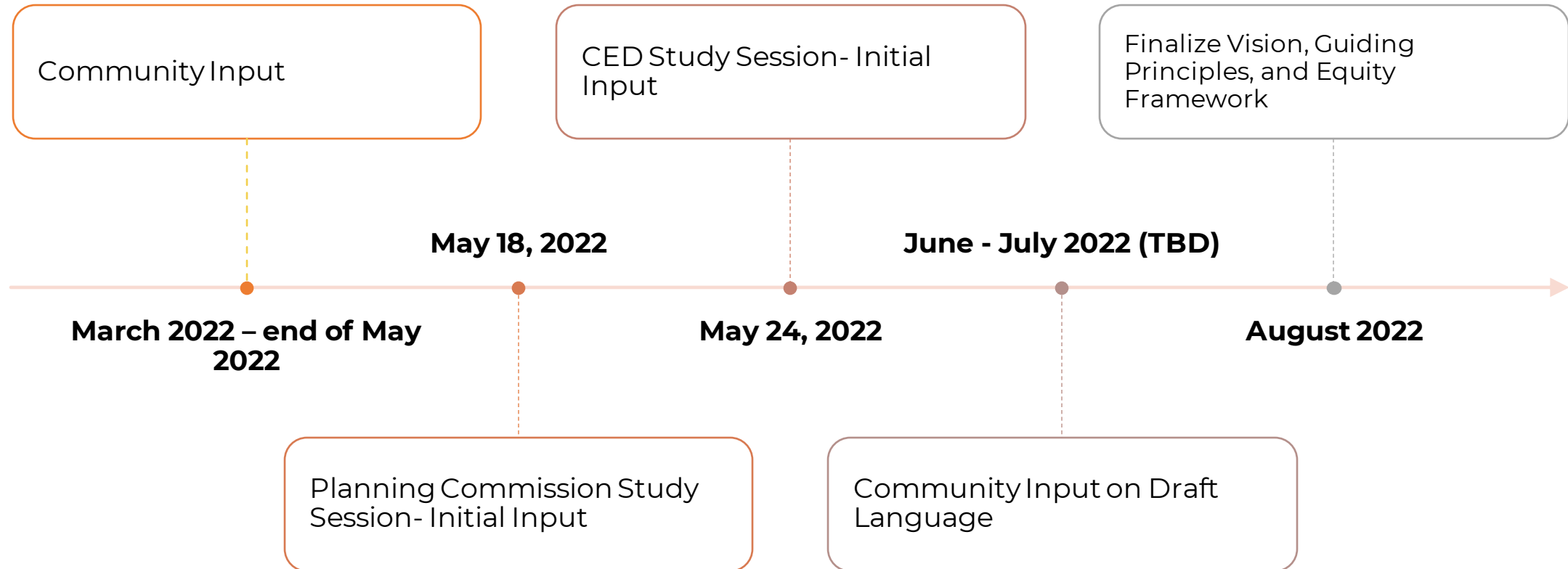


Environmental Justice Community Policy Ideas in response to Priority Needs

1. **Human Health/Socioeconomic Impacts Analysis** of all market rate projects
2. **Port of Oakland** include EJ and Public Health policies, criteria, equity, update science, research and data apply to all levels of administration and operation for the residents of West Oakland and flatlands.
3. **Traffic Safety Measures** like speed bumps, cross walks, traffic lights, pothole repair, bike lanes and repaved sidewalks
4. **Affordable Grocery Stores** in East and West Oakland
5. **Illegal Dumping Clean up** in East and West Oakland



Vision, Guiding Principles, and Equity Framework - Process



Community Vision and Themes – What We Heard

- Housing as a Basic Human Right
- Civic Engagement
- Prioritize Investment in Historically Redlined Communities Across Oakland
- Address Environmental Injustice
- Make Neighborhoods Feel Safer and Better Maintained
- Preserve Diverse Cultural Identity and Cultural Spaces
- Support Small and Ethnic Businesses
- Promote Equitable Access to Parks and Open Spaces
- Accessible Transportation System that is Transit, Bike and Pedestrian Friendly
- Equitable Emergency Response

"We need to address the confluence of environmental impacts and injustices that some communities have endured forever"

"I am a queer Afro-Latina, and I love that I see myself reflected in Oakland."

"We pay property taxes too, need to be treated the same way as the ones in the Hills"

"Seventh Street [in West Oakland] has so much history. Let's find ways to highlight and celebrate Black and Latinx history/presence through arts and food."

Discussion

- What are your long-term, big-picture vision, goals, and priorities for Oakland's future?
 - What are the biggest opportunities and challenges?
 - How can the General Plan build upon existing plans?
- What specific issues, opportunities, and challenges would you like to see the General Plan elements address?
 - Location of new housing and other uses to minimize geographic/racial disparities and reduce pollution exposure
 - Access to healthy foods
 - Needs of an aging population
 - Needs of small and ethnic businesses and community development
 - Facilitate an accessible transportation system that is Transit, Bike, Pedestrian and Climate Friendly
 - Improve park equity and connectivity

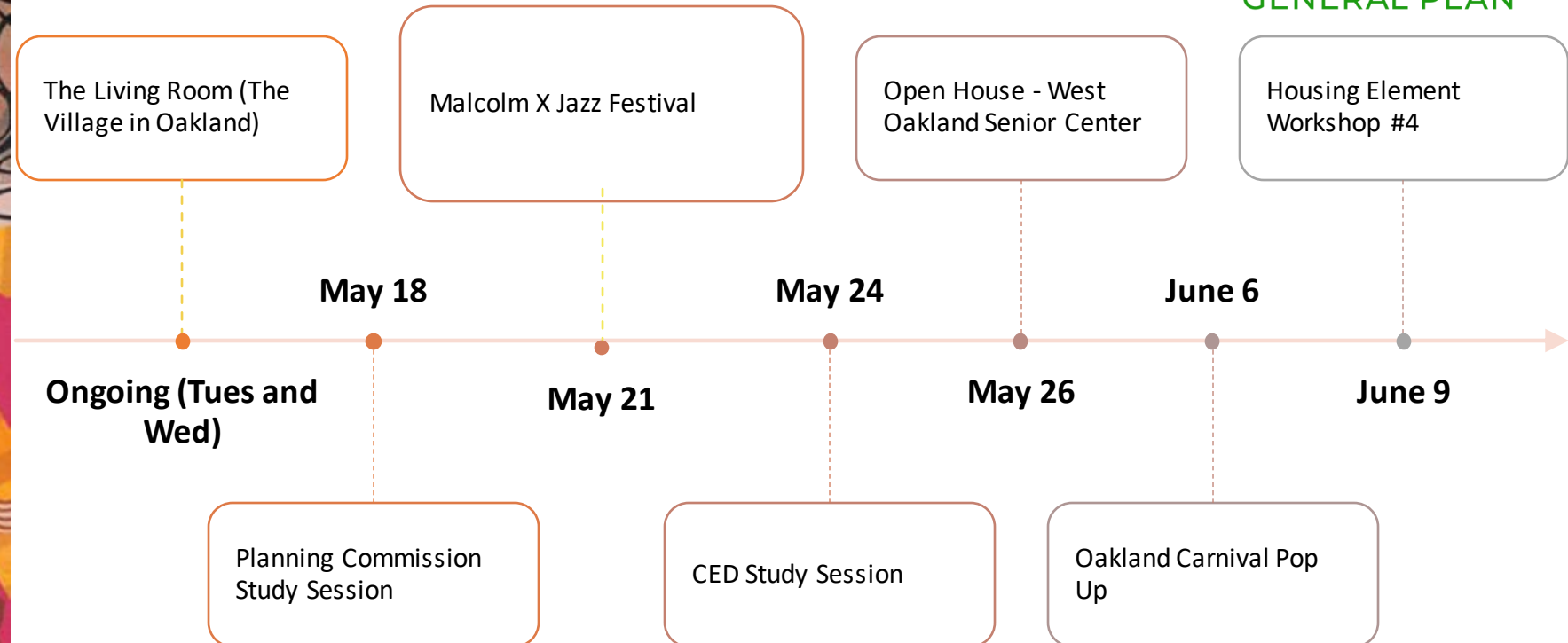
Draft 2023-2031 Housing Element

- 2023-2031 Housing Element sets forth the City's housing priorities and goal
- Subject to State Law mandates and Deadlines
- Foundational framework of 5 overarching goals to address the housing crisis and needs of Oaklanders
 1. Protect Oakland Residents from Displacement and Prevent Homelessness
 2. Preserve and Improve Existing Housing Stock
 3. Expand Affordable Housing Opportunities
 4. Address Homelessness and Expand Resources for the Unhoused
 5. Promote Neighborhood Stability and Health
- **Schedule**
 - 1st public review period - May 12 – June 13 (pursuant to State Deadlines) for staff to consider and incorporate comments before submitting to the State Housing and Community Development (HCD) Department
 - Late June 2022 – September 2022 (90-Day Review Period) - State Reviews Draft Housing Element
 - *Draft Housing Element will still be available for public comment*
 - 2nd Draft available for public review in late October/early November 2022

Calendar of Events



OAKLAND2045
GENERAL PLAN



Visit the general Plan Update website for more information and to sign-up for regular updates:
www.oaklandca.gov/topics/general-plan-update