

Stormwater Trash Load Reduction Compliance Update

Kristin Hathaway, Acting Assistant Director
Public Works Department
Bureau of Environment

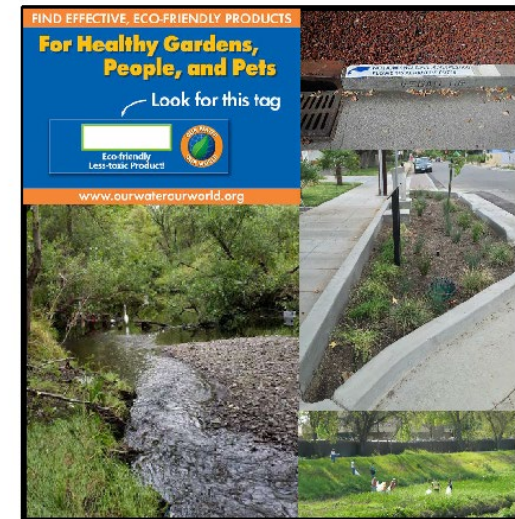


Stormwater Trash Load Reduction Compliance

- City subject to requirements under Federal Clean Water Act
- Municipal Regional Stormwater Permit 2.0
- Mandates control and reduction of pollutants in stormwater runoff
- Failure to comply can result in enforcement actions and/or third-party lawsuits

California Regional Water Quality Control Board
San Francisco Bay Region
Municipal Regional Stormwater NPDES Permit

Order No. R2-2015-0049
NPDES Permit No. CAS612008
November 19, 2015



Stormwater Trash Load Reduction Compliance

- Reduce trash load by 100% from 2009 baseline levels
- Baseline accounts for trash generation levels across City by land-use type

Very-high trash level example

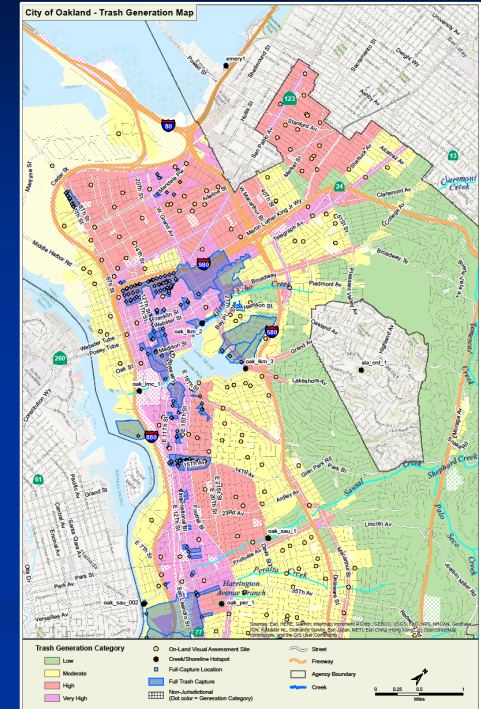


- Existing trash reduction credits:
 - Full Trash Capture Systems (11.6%)
 - Creek & Shoreline Cleanups (10%)
 - Source Control Actions (10%)
 - Direct Trash Discharge Control Program (15%)
 - Other Control Measures (56.8%)
- Total credits = 103.4%



Stormwater Trash Load Reduction Compliance

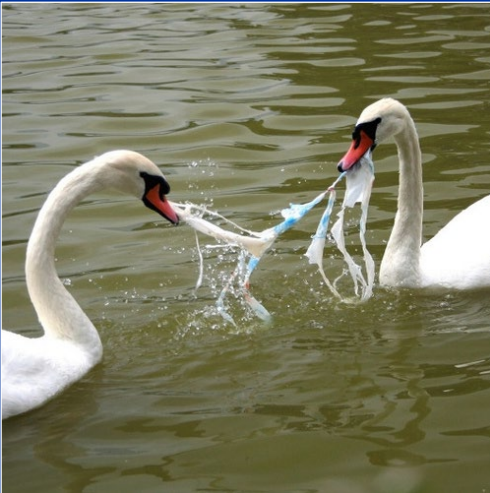
- Full trash capture devices (210 total)
 - hydrodynamic separators (11)
 - connector pipe screens (182)
 - gross solids removal device (2)
 - green stormwater infrastructure (3)
 - trash booms (6)
 - tree wells (6)
- Estimates for ~1,200 to be installed in the next five years through CIP
- Capital costs up to \$7M
- Annual maintenance up to \$1.2M



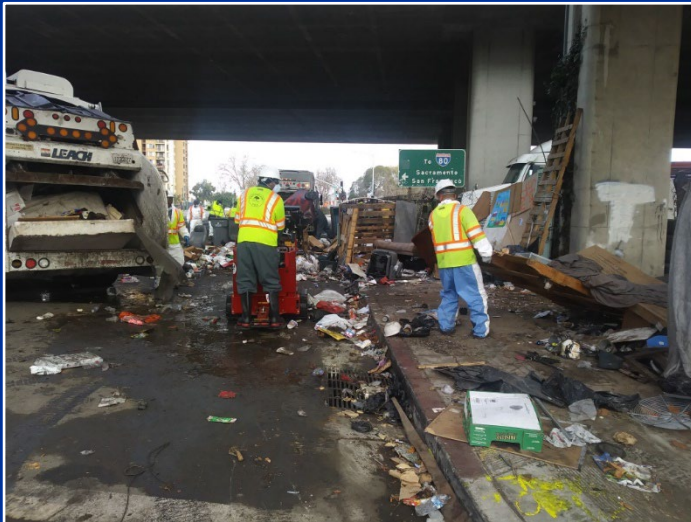
- **Creek and Shoreline Cleanups**
 - Provides 10% trash compliance credit
 - Earth Day, Creek to Bay Day, MLK Day of Service, Adopt a Spot = 512k gallons in fiscal year 2020/2021
 - +338% increase in volunteer hours since 2010



- **Source Control Actions**
 - Provides 10% trash compliance credit
 - Single-use Plastic Bag Ban
 - Polystyrene Foam Disposable Food Service Ware Ban



- Direct Trash Discharge Control Plan
 - Provides 15% trash compliance credit
 - Illegal dumping and homeless encampment cleanups within 500 ft. of a waterway
 - Leverages existing programs



■ Other Control Measures

- Measured through assessments (10% of street miles in each Trash Management Area)
- Includes: Street sweeping; Adopt a Spot; Adopt-a-Drain; Excess Litter Fee; Business Improvement Districts; facility inspections; environmental enforcement officers; and education and outreach (e.g., Oaktown PROUD)
- Demonstrated improvements reducing trash from very-high to moderate levels



■ MRP 3.0

- Removes 35% credit: creek and shoreline cleanups (10%); existing source controls (10%); and Direct Trash Discharge Control Program (15%)
- 31.6% trash reduction credit needed by Fiscal Year 25/26



■ Future Actions

- Install full trash capture devices
 - Integrate in future PWA and DOT projects
 - Measure Q funding
- Enhance on-land actions
- Compliance challenges moving forward
 - maintenance of trash capture devices
 - uncertainty in on-land actions

