



FILED
OFFICE OF THE CITY CLERK
OAKLAND
2015 JAN 15 AM 10:29

AGENDA REPORT

TO: HENRY L. GARDNER
INTERIM CITY ADMINISTRATOR

FROM: Sean Whent

SUBJECT: Quarterly Report on Crime Trends
and Crime Reduction Activities

DATE: January 13, 2015

City Administrator
Approval

Date

1-15-15

COUNCIL DISTRICT: City-Wide

RECOMMENDATION

Staff recommends that the Public Safety Committee accept this Quarterly Informational Report from the Oakland Police Department (OPD) on Crime Trends and Crime Reduction Activities.

BACKGROUND / LEGISLATIVE HISTORY

The Oakland Police Department expanded its Ceasefire efforts and investigative capabilities in 2013. This is a quarterly report to inform the Public Safety Committee on the status of OPD's crime reduction initiatives, and to discuss crime trends, OPD's response and crime statistics with assigned Area Commanders.

In 2013, OPD reorganized into a Neighborhood Policing model which included law enforcement accountability distributed into five distinct areas. Each area is commanded by a Captain of Police.

ANALYSIS

This informational report is presented to the City Council and the Oakland community to provide an update on crime trends and OPD's crime reduction strategies as of December 2014. This report includes information organized as follows:

- Bureau of Field Operations organization
- Ceasefire Violence Reduction Strategy
- Citywide crime
- Crime by Area – Presentations by each Area Commander and the Criminal Investigations Commander:
 - Statistics
 - Trends
 - Response

Item: _____
Public Safety Committee
January 27, 2015

The attached PowerPoint presentation includes a summary analysis of crime statistics, trends and the response by OPD.

PUBLIC OUTREACH/INTEREST

This is of public interest as it directly relates to safety within the Oakland community.

COORDINATION

The City Attorney's Office was consulted in preparation of this report.

SUSTAINABLE OPPORTUNITIES

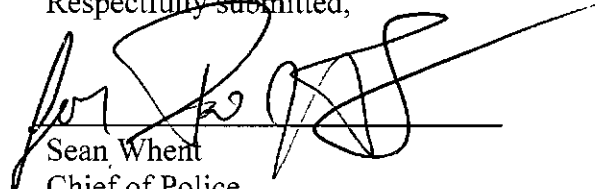
Economic: There are no economic opportunities identified in this report.

Environmental: No environmental opportunities have been identified.

Social Equity: This report provides valuable information to the Oakland community regarding enforcement and crime reduction efforts in their communities.

For questions regarding this report, please contact Danielle Outlaw, Deputy Chief of Police, Bureau of Field Operations 2, at (510) 777-8563.

Respectfully submitted,



Sean Whent
Chief of Police
Oakland Police Department

Prepared by:
Danielle Outlaw,
Deputy Chief of Police, Bureau of Field Operations 2

Attachment A – Crime Stats PowerPoint

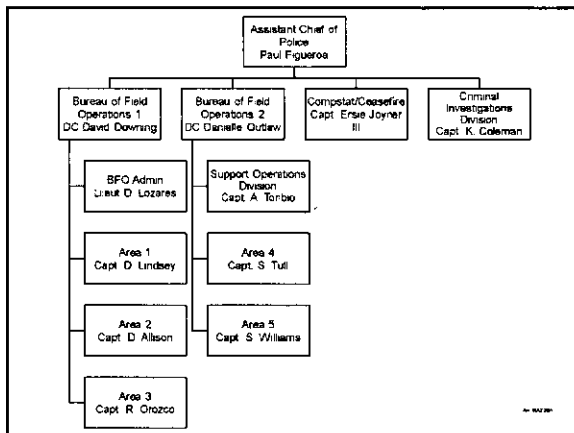
Item: _____
Public Safety Committee
January 27, 2015

Oakland Police Department Report on Public Safety

Presentation to the
Public Safety Committee
January 27, 2015

Outline

- Ceasefire
- Summary of Citywide Crime
- Oral Presentations by Area Commanders
 - Statuses
 - Crime Trends
 - Responses



Ceasefire Update

Ceasefire: Goals

- Reduce shootings and homicides through respectful direct communication and follow-through with those at highest risk of violence
- Decrease recidivism and incarceration rates of individuals participating in interventions
- Strengthen police-community relations

Ceasefire:

Focus on Quality Implementation (1)

- Most recent call-ins completed in July and November 2014
- Next Call-in scheduled for February 2015
- Custom Notifications/Direct Communications continue

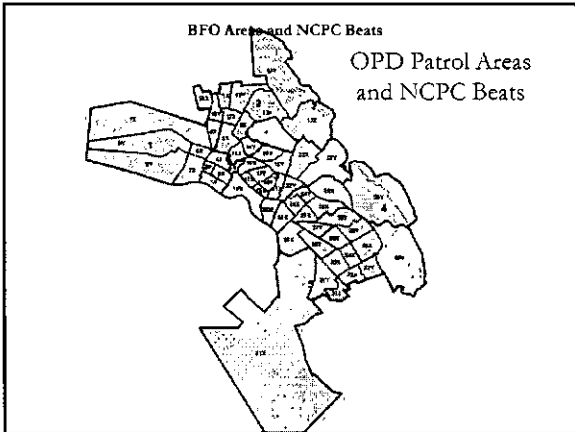
Ceasefire:
Focus on Quality Implementation (2)

- Dedicated Ceasefire team focused on strategies
- Weekly Shooting Reviews are conducted
- Partnership with Probation Department strengthened to include more robust Global Positioning System (GPS) monitoring and compliance checks

Ceasefire:
Focus on Quality Implementation (3)

- Police Legitimacy/Procedural Justice Training has begun
- Strong engagement from community partners continues
- All partners are heavily involved in violence reduction

Area Updates



Area Command

- Tailored Area Responses
- Comp Stat Accountability
- Support from the Criminal Investigation Division (CID)

Citywide Crime

	12/23/14 Year to Date	12/23/13 Year to Date	1-Year Change	3-Year Average	Change from 3-Year Average
Assault with Firearm	405	463	-13%	468	-16%
Robbery	3,223	4,752	-32%	4,011	-24%
Total Part 1 Crime*	30,004	33,091	-9%	31,943	-6%

*Total Part 1 Crime also includes all aggravated assault, larceny-theft, motor vehicle theft, and arson

Area 1: Captain Drennon Lindsey

	12/21/14 Year to Date	12/21/13 Year to Date	1-Year Change	3-Year Average	Change from 3-Year Average
Assault with Firearm	71	54	31%	75	-6%
Robbery	632	856	-26%	752	-19%
Total Part 1 Crime	5,750	6,108	-6%	5,809	-1%

*Total Part 1 Crime also includes all aggravated assault, larceny-theft, motor vehicle theft, and arson

- Area 1: Trends**
- Street level robberies around BART Stations (West/Lake Merritt)
 - Street level robberies in the area of Grand Avenue/Telegraph border
 - Auto Burglaries in Beats 1, 3 and 4
 - Shootings in Beats 2 and 6

- Area 1: Response (1)**
- 24/7 Area of Enforcement Action in both areas
 - Partnership with community partners and law enforcement partners (Federal, State and County)
 - Walking and bike patrol on Thursday, Friday, and Saturday evenings

- Area 1: Response (2)**
- Continued communication with the business community
 - Collaboration with Ambassadors, Local Security Agencies
 - Command review of felony reports to audit initial investigation and direct follow up

- Area 1: Response (3)**
- Collaborative efforts with Criminal Investigations Division to increase intelligence and problem solving
 - Collaborative efforts with outside agencies
 - Collaborative efforts with Neighborhood Crime Prevention Council (NCPC) Groups
 - Meetings with Area 1 Advisory Committee

- Area 1: Robbery Response (1)**
- Directed Patrols in Hot Spot Areas
 - Use of Mobile Command Van
 - Use of Crime Reduction Team (CRT)

Area 1: Robbery Response (2)

- Use of Problem Solving Officers
- Use of Foot Patrol Units
- Felony arrests in areas of focus
- Identification of known suspects through intelligence

Area 1: Burglary Response (1)

- Intelligence/data/statistics by Crime Analyst
- Use Crime Analyst to identify specific dates/times/locations of burglaries:
 - Auto
 - Residential
 - Commercial

Area 1: Burglary Response (2)

- Review/Audit of reports
- Collaborative efforts with Central Investigations Division for follow-up/intelligence
- Area 1 Advisory Committee

Area 1: Special Investigative Unit (1)

- Targeted Enforcement Operations
- Increased intelligence-gathering and dissemination amongst field units
- Increased collaborative efforts within OPD and Community

Area 1: Special Investigative Unit (2)

- Targeted enforcement efforts lead to:
 - Arrest of known violent offenders
 - Reduction in shootings and other violent crimes
 - Positive community response

Area 2: Captain Darren Allison

	12/22/14 Year to Date	12/22/13 Year to Date	1-Year Change	3-Year Average	Change from 3-Year Average
Assault with Firearm	31	38	-18%	37	-19%
Robbery	420	762	-45%	636	-51%
Total Part 1 Crime*	5,848	6,745	-13%	6,527	-12%

*Total Part 1 Crime also includes all aggravated assault, larceny-theft, motor vehicle theft, and arson

Area 2: Gun Violence

- Early enforcement efforts contribute to decline
- Information on known gangs/individuals more robust
- Focused effort on gang members and violent offenders
- Communication of weekly priorities

Area 2: Robberies

- Primary robbery hot spots include:
 - Telegraph Avenue corridor (surrounding area)
 - Upper Broadway
 - Upper North Oakland area
- Robbery patterns and trends
- Reduction Strategies

Area 2: Burglaries

- Points of entry
 - Residential Force front door/pry window
 - Auto Break window
- Primary hotspots
 - Upper Telegraph
 - Lower Broadway
 - West Grand/Grand Avenue
- Reduction Strategies

Area 3: Captain Ricardo Orozco

	12/22/14 Year to Date	12/22/13 Year to Date	1-Year Change	3-Year Average	Change from 3-Year Average
Assault with Firearm	67	80	-16%	74	-10%
Robbery	845	1 221	-31%	1,038	-23%
Total Part 1 Crime*	5,727	6,740	-15%	6,489	-13%

*Total Part 1 Crime also includes all aggravated assault, larceny-theft, motor vehicle theft, and arson.

Area 3: Trends (1)

- Street level robberies Beats 19 & 20
- Primary robbery hot spots include Beats 19 & 20
- Peak hours 3rd watch (6 00 p m – 11 00 p m)
- Peak days Monday and Thursday

Area 3: Trends (2)

- Several teams are committing robberies
- Victims generally Asian and Latino
- Victims are generally walking on the street or exiting from cars

- ### Area 3: Response (1)
- Directed patrol as calls for service allow
 - Park marked patrol cars in hot spots
 - Officers walking in business districts
 - Officers riding bicycles
 - Undercover enforcement operations conducted

- ### Area 3: Response (2)
- Regular briefings with Robbery Investigators
 - Officers directed to conduct thorough preliminary investigations
 - Command review of robbery reports to audit initial investigations and direct follow up
 - Handout robbery prevention flyers in hot spots

- ### Area 3: Response (3)
- Problem Solving Officers (PSOs) conducting follow ups and canvass on robberies looking for additional witnesses and / or video
 - List of Robbery parole / probationers in Area to conduct "check ups"
 - Meeting with Latino and Asian community to help them report crimes

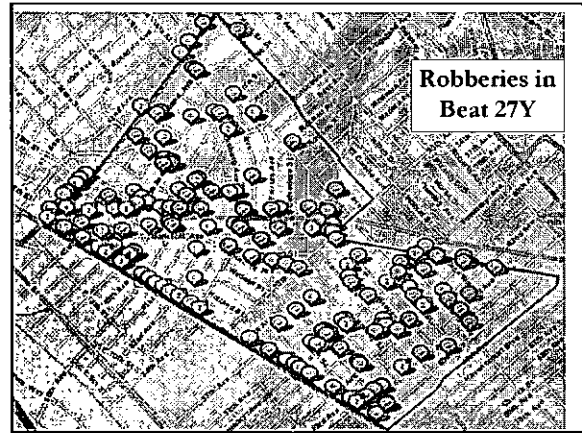
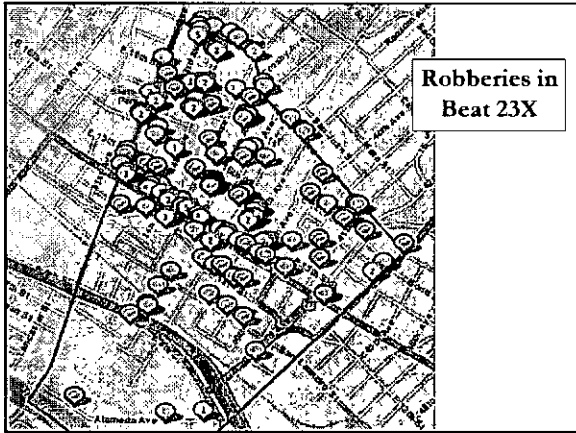
Area 4: Captain Steven Tull

	12/22/14 Year to Date	12/22/13 Year to Date	1-Year Change	3-Year Average	Change from 3-Year Average
Assault with Firearm	79	107	-26%	109	-38%
Robbery	727	952	-24%	808	-11%
Total Part 1 Crime*	5,215	5,705	-9	5,512	-6%

*Total Part 1 Crime also includes all aggravated assault, larceny-theft, motor vehicle theft, and arson

- ### Area 4: Robbery Trends (1)
- Multiple suspects
 - Physically searching victims during the robberies
 - Where robberies are occurring
 - Bus stops
 - In front of residences
 - Entering/Exiting vehicles
 - Sidewalks – talking on cell phones

- ### Area 4: Robbery Trends (2)
- Targeted Items
 - Money
 - Cell phones (iPhones)
 - Gold chains
 - iPads
 - Primary Areas
 - **Beat 23X** (Fruytale Village and surrounding areas)
 - Beat 27X
 - Beat 27Y



- Area 4: Robbery Response (1)**
- High visibility
 - Intelligence-Driven Directed Patrol
 - Collaboration with the Unity Council Ambassadors

- Area 4: Robbery Response (2)**
- Working with Neighbor Crime Prevention Council (NCPC) Groups
 - Daily Mission Briefings for Targeted Areas

Area 5: Captain Sharon Williams

	12/21/14 Year to Date	12/21/13 Year to Date	1-Year Change	3-Year Average	Change from 3-Year Average
Assault with Firearm	166	187	-11%	178	-7%
Robbery	586	952	-38%	767	-31%
Total Part 1 Crime	7,003	7,324	-4%	7,106	-1%

*Total Part 1 Crime also includes all aggravated assault, larceny-theft, motor vehicle theft, and arson

- Area 5: Trends (1)**
- Shootings.
 - Twenty-three shootings in October and November
 - Eleven more as of December 17
 - Robberies
 - Twenty percent of October robberies were in Beat 29X
 - Twenty-six percent of November robberies were in Beat 34X

Area 5: Trends (2)

- Burglaries
 - Thirty-one percent of October burglaries were in Beat 31Y
 - Thirty-three percent of November burglaries were in Beat 31Y

Area 5: Response (1)

- Established Hispanic Gang Unit to provide focus intelligence-gathering and enforcement based on Hispanic gang-related shootings
- Continued to address violent crime using Ceasefire principles and concepts including increased custom notifications of persons on fringes of involvement in violence

Area 5: Response (2)

- Emphasis on gathering and evaluating intelligence for focused deployment
 - Conduct various intelligence-based enforcement operations focused on specific individuals/ groups
- Deploy Crime Reduction Team (CRT) in specific geographical areas in line with beat structure

Area 5: Response (3)

- Implement an Area 5 team concept to include members from
 - Crime Reduction Teams
 - Problem Solving Officers
 - Patrol Personnel
 - Neighborhood Service Coordinators
 - Area Investigators
 - Community Members
- Require comprehensive and thorough preliminary investigations

Area 5: Response (4)

- Increase training opportunities via line-up, mentoring from experienced officers, and off-site opportunities
- Increase expectations of officer relationship-building with community via consensual contacts
 - Walking the beat
 - Attending living room-style discussions

**Criminal Investigation Division:
Captain Kirk Coleman**

- Felony Assault/Gangs Section*
- Homicide Section*
- Misdemeanor Crimes and Task Forces Section
- Robbery and Burglary Section*
- Special Victims Section*
- Youth and School Services Section*

**Criminal Investigation Division:
Felony Assault and Gangs Section**

- Four Felony Assault Investigators including two Area Investigators:
 - Area 4 Officer B Miller-Seabridge
 - Area 5 Officer B Estrada
- Area Investigators investigate crimes identified by Area Commanders

**Criminal Investigation Division:
Homicide Section**

- Ten Investigators including:
 - One Investigator assigned to cold case homicide investigations
 - Two Investigators assigned to officer-involved shootings / Level 1 use of force investigations
- In 2014, the Homicide Section investigated 86 deaths including six Justifiable Homicides

**Criminal Investigation Division:
Robbery and Burglary Section (1)**

- Eight Robbery Investigators including five Area Investigators to investigate crimes identified by Area Commanders
 - Area 1 Officer M Campos
 - Area 2 Officer J Ngo
 - Area 3 Officer H Jimenez
 - Area 4 Officer C Borjesson
 - Area 5 Officer B Rivera
- 3,691 Robbery Investigations were assigned in 2014

**Criminal Investigation Division:
Robbery and Burglary Section (2)**

- Four Burglary investigators including three Area investigators to investigate crimes identified by Area Commanders:
 - Area One Officer Q Johnson
 - Area Two Officer R Roche
 - Area Three Officer M Nguyen

**Criminal Investigation Division:
Special Victims Section**

- Six Sexual Assault Investigators
- Three Domestic Violence Investigators

**Youth and School Services
Section**

- Twelve officers are assigned to School Services
- Officers provide Safe Passage to and from Six designated schools
 - Frick
 - Havenscourt
 - Parker
 - Elmhurst
 - Roosevelt
 - Ralph Bunche

Youth and School Services Section

- School Officers provide other programs including
 - Mentoring Program for students at each campus
 - G R E A T (Gang Resistance Education and Training) Program
 - School Restorative Justice Program

Youth and School Services Section

- Other tasks performed by School Services Officers include
 - Sex Offender compliance checks around assigned campuses
 - Assisting Patrol personnel with calls for service around assigned school campuses

Youth and School Services: O.K. (Our Kids) Program

- Provides mentors for African American males
- Provides academic support to students
- Provides life skills training
- Includes weekly “kick-it” sessions with kids and mentors
- Provides incentives for meeting specific academic and behavioral goals

Youth and School Services: P.A.L. (Police Athletic League)

- Offers educational and recreational programs
- Provides positive interaction between youth and Police Officers
- Fosters mutual respect, understanding, and trust
- Guides youth toward responsible, mature, and informed citizenship
- Encourages good will, friendship, and sportsmanship

Criminal Investigation Division: Professional Development

- Foundational Investigation Training
 - Institute of Criminal Investigation (ICI) Core Course
 - Behavior Analysis Training Institute (BATI) - Interview and Interrogation Course
 - Basic Investigators Course
 - Search Warrant Course
- Additional Specialized Training based on investigative assignment

Conclusion

Thank You