

# Community Quick-Build Traffic Calming Pilots

**Transport Oakland**  
**March 2nd, 2024**

# Leverage community groups to create quick, ambitious projects to address acute street safety concerns

## Background:

- Broadway street-calming pop-up demonstration at Oakland Tech, May 17 - 18, 2023
- OT Student hit by vehicle on Broadway March 23, 2023
- Collaborative WOBO & Oakland Tech response
- Two full-day traffic calming pilot demonstration
- Extra speedway lane removed to design for calm passage through school zone



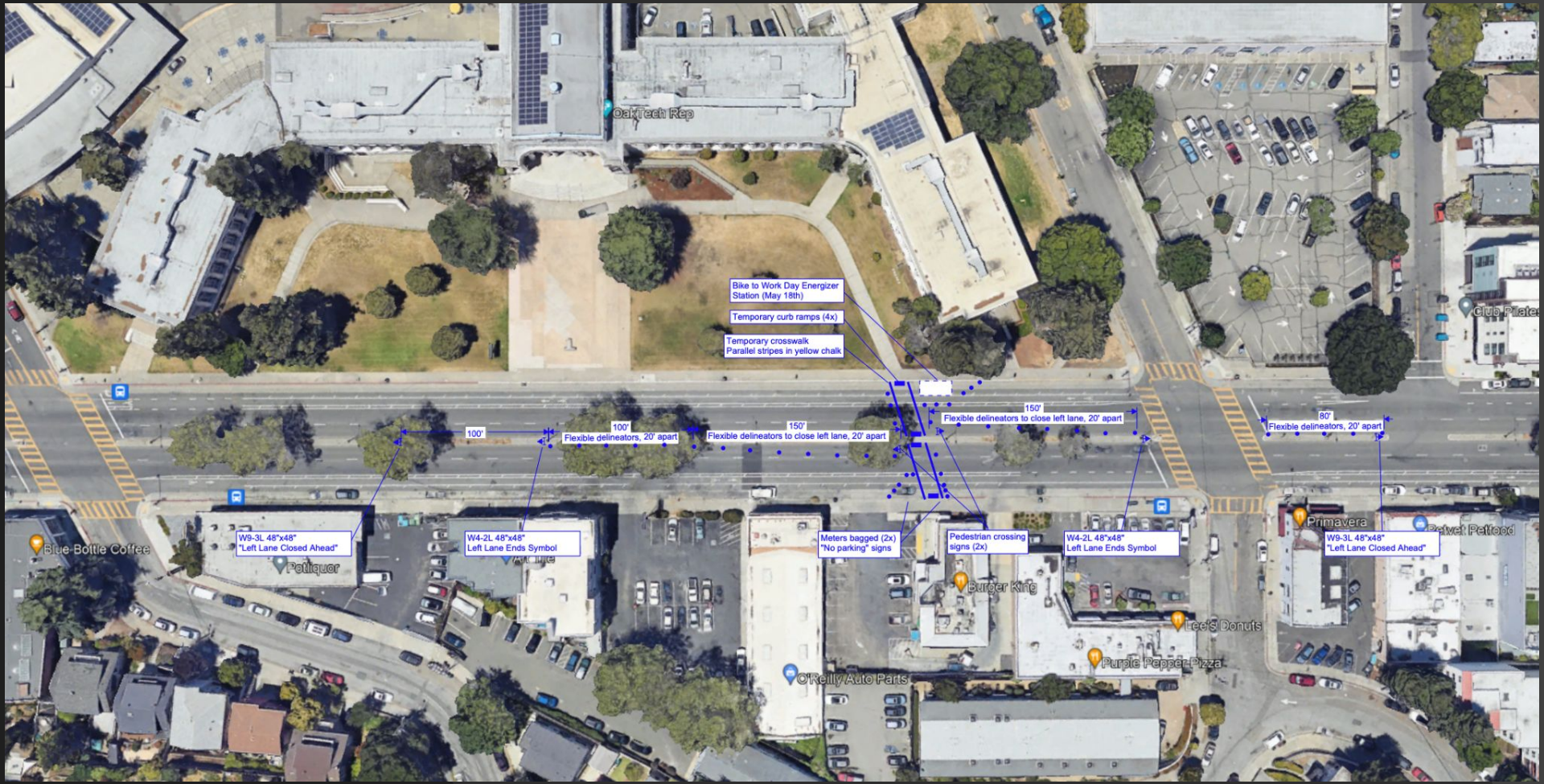
# Goals:

- Engage neighborhood around creative solutions for creating a safe public right-of-way
- Take community action to respond to a serious traffic collision
- Listen to the wants and needs of students and community members, especially those using alternative forms of transportation



# Site Plan

Attachment B



OakTech Rep

Bike to Work Day Energizer Station (May 18th)

Temporary curb ramps (4x)

Temporary crosswalk  
Parallel stripes in yellow chalk

100'

Flexible delineators, 20' apart

100'

Flexible delineators to close left lane, 20' apart

150'

150'

Flexible delineators to close left lane, 20' apart

80'

Flexible delineators, 20' apart

Blue-Bottle Coffee

W9-3L 48"x48"  
"Left Lane Closed Ahead"

Patiqor

W4-2L 48"x48"  
Left Lane Ends Symbol

WALgreens

Meters bagged (2x)  
"No parking" signs

Burger King

Pedestrian crossing signs (2x)

W4-2L 48"x48"  
Left Lane Ends Symbol

Leaf's Donuts

Purple Pepper Pizza

W9-3L 48"x48"  
"Left Lane Closed Ahead"

Primavera

Primal Petfood

O'Reilly Auto Parts

# WOBO Broadway Project:

- Drafted site plan and set pilot date
- Special Event Permit application
- Neighborhood outreach/ publicity
- Volunteer Recruitment

## Materials:

- Traffic cones
- Spray chalk
- Lane-closure signage
- Cardboard striping templates
- Safety vests



Transport Oakland's ask:

Allow community groups to create quick, ambitious projects to address acute street safety concerns

# Decorative Bulb-outs



Shafter Ave, Oakland



Washington D.C.

# Decorative Bulb-outs



Los Angeles, CA



# Traffic Circles



Richmond, CA



Santa Monica, CA

# Traffic Circles



Palo Alto, CA



Livingston, MT

# Lane Diversions / Reallocations



El Cerrito, CA



Berkeley, CA

# Pinch points



Portland, OR

# Chicanes



Portland, OR



13th Street, Oakland

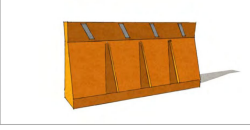
# Key aspects for Oakland's pilot program:

- Progressive design toolkit
  - Prioritizes pedestrian safety and allows pilots that slow down cars, a proven safety feature
- Minimal insurance requirements - especially for projects designed to slow vehicles
- Include sturdy materials, designed to be flexible as a project layout morphs
- Short (5-10 day) turn-around times


# Toolkit of pre-approved materials:

- Flex posts
- Wheel stops
- Planters
- Bollards
- K-rail
- Decorated barricades
- Zebra dividers
- In-street signage

The following materials are permissible as barrier elements:



**Empty or Sand-filled Plastic Jersey Barrier**  
 Typical Dimensions: 74"L x 18"W x 36"H  
 Estimated Cost: \$500  
**Overview:**  
 Using water-filled jersey barriers is a simple way to add heavy, substantial barriers that can be easily moved into place with two people prior to being filled with water or sand.



**Type III Barricade**  
 Typical Dimensions: 72" x 60" x 63"H  
 Estimated Cost: \$120  
**Overview:**  
 Type III barricades are lightweight and include three reflective panels.



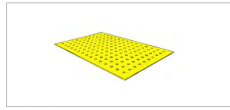
**Traffic Barrel**  
 Typical Dimensions: 18"-23.5"DIA. x 39.7"H  
 Estimated Cost: \$75  
**Overview:**  
 Traffic barrels are easy to install and create a heavy and durable wall of separation. They should be spaced intermittently to allow curbside access.



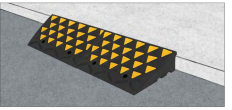
**Traffic Cone**  
 Typical Dimensions: 14"DIA. x 28-36"H  
 Estimated Cost: \$30  
**Overview:**  
 Traffic cones are an affordable and easily movable barrier with reflective bands.

### ACCESSIBILITY

The following materials are permissible as ADA accessible elements:




**Warning Pad**  
 Typical Dimensions: 24"L x 48"W x 3/8"H  
 Estimated Cost: \$40  
**Overview:**  
 Warning pads can be detected by the visually impaired. These should be located at entry points to indicate leaving and entering pedestrian only spaces.




**Threshold Ramp**  
 Typical Dimensions: 56.1"W x 24.4"L x 6"H  
 Estimated Cost: \$150 ea  
**Overview:**  
 Tactical ramps provide access to curbs and parklets, tactical ramps provide access to curbs and parklets.

### SIGNAGE

The following materials are permissible as signage:



**Project Info Signage**  
 Typical Dimensions: 8.5x11  
 Estimated Cost: NA  
**Overview:**  
 Sign templates will be provided by ATLDOT and must be posted at the project site during installation and throughout the duration of the project. Sign should be printed on 8.5x11 paper and laminated.



**Slow Shared Street Project Signage**  
 Typical Dimensions: 18"W x 24"H  
 Estimated Cost: NA  
**Overview:**  
 Slow street signage will be required for all slow streets. ATLDOT will provide the template for fabrication.



# Standard configurations for:

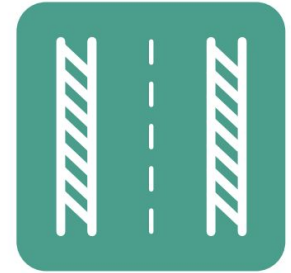
- intersection bulb-outs / curb extensions
- modal filters
- lane reallocation
- traffic circles
- chicanes
- slip-lane removal
- double-right-turn removal
- diagonal diverters
- widened pedestrian zones
- Parking removal for line-of-sight restoration



**Curb Extension**



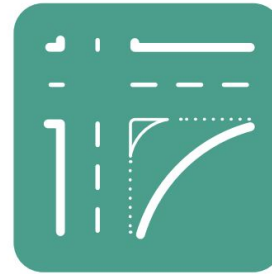
**Demonstration Bike/LIT Lanes**



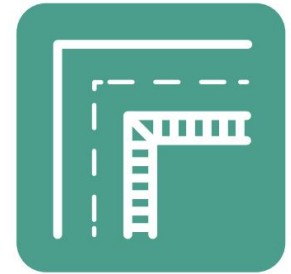
**Lane Narrowing**



**Slow Shared Street**



**Slip Lane Closure**



**Walk Lane Closure**



# Example toolkit, excerpt from Atlanta

Atlanta's similar program lists a number of different traffic calming options, including:

- Recommended materials
- Standard dimensions and measurements
- Example plan documents

## 3 LANE NARROWING

### MATERIAL OPTIONS

---

#### Striping

Acceptable striping for **Demonstration** installations include:

- Traffic tape
- Striping chalk
- Striping spray paint

Acceptable striping for **Pilot** installations include:

- Traffic paint with reflective beads
- Thermoplastic traffic striping

#### Vertical Barriers with Reflective Bands

Acceptable barriers for **Demonstration** installations include:

- Traffic cones (up to one week only)
- Traffic barrels
- Planters
- Empty or sand-filled jersey barriers

Acceptable barriers for **Pilot** installations include:

- Wheel stops
- Flex posts
- Sand-filled jersey barriers
- Concrete barriers
- Planters

### OPTIONAL ENHANCEMENTS

---

The following enhancements are permissible in **Pilot** installations only, but not required:

- Pedestrian space art

# Example Pilot Timeline

Identify street with critical traffic safety need

Community to follow toolkit for drafting a site plan

Submit site plan and expected pilot dates to OakDOT

Materials installation (signage, temporary street closures if needed, vertical element placement)

Attachment B  
OakDOT review for possible extension

Day: 0 1 5 12 15 ... 105

Community volunteer recruitment and awareness building

OakDOT to review pilot plan and grant encroachment permit or respond with feedback

Community engagement, maintenance, adjustments, speed data collection

# Further Community Engagement:

- Educational posters/flyers explaining the pilot
- Community artwork intentionally doubled as traffic calming features
- Link to online feedback form, to be reviewed after initial trial

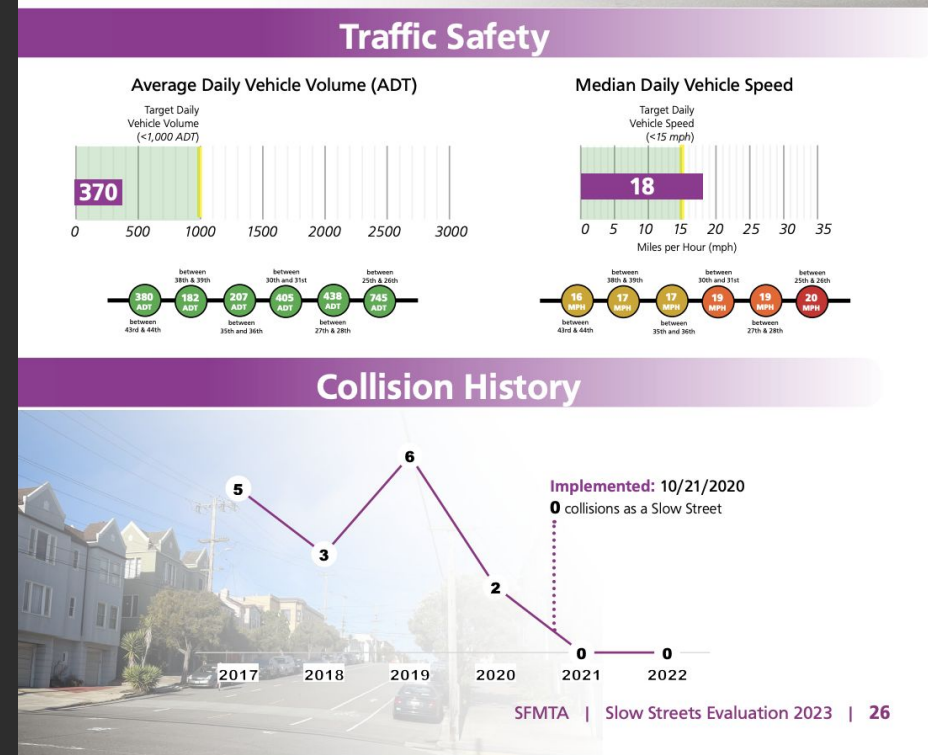


## After Initial Pilot Period:

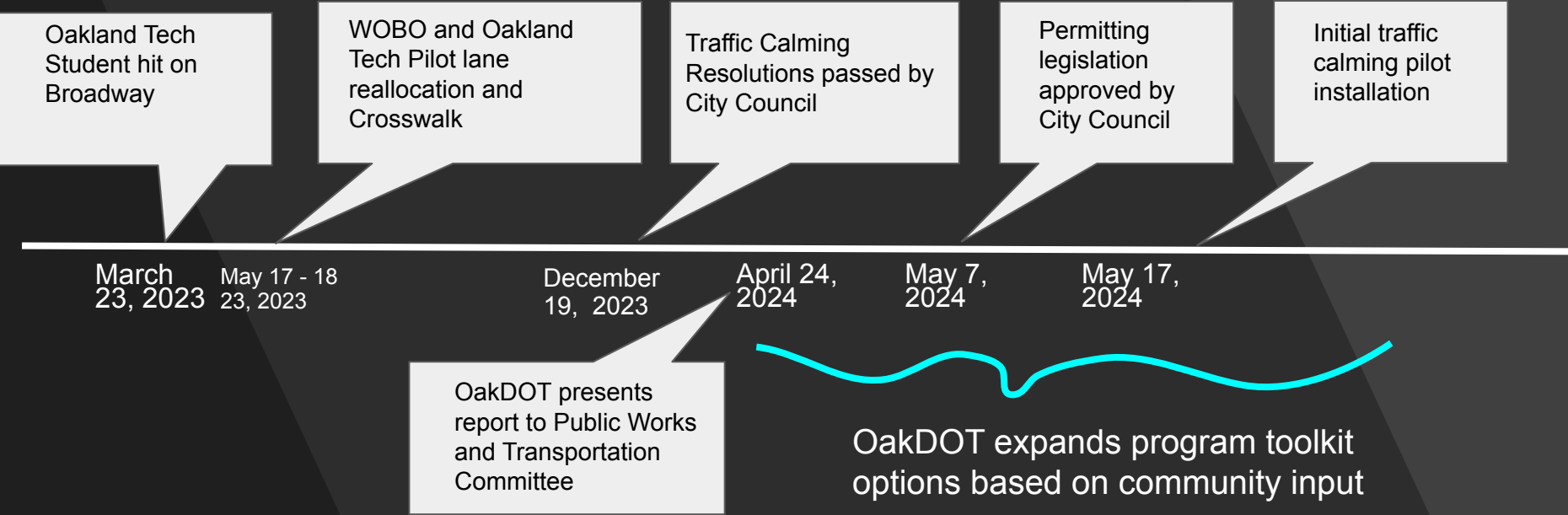
- Continuation of traffic calming if rate of speeding decreases
- Response to proposed adjustments

## Data Collection:

- Telraam traffic counts for volume and speed
- Traffic collision data within 20 feet of affected intersections



# Pilot Legislation Timeline



# Thank You!

Attachment B



Questions/comments:  
[transportoaklandboard@gmail.com](mailto:transportoaklandboard@gmail.com)