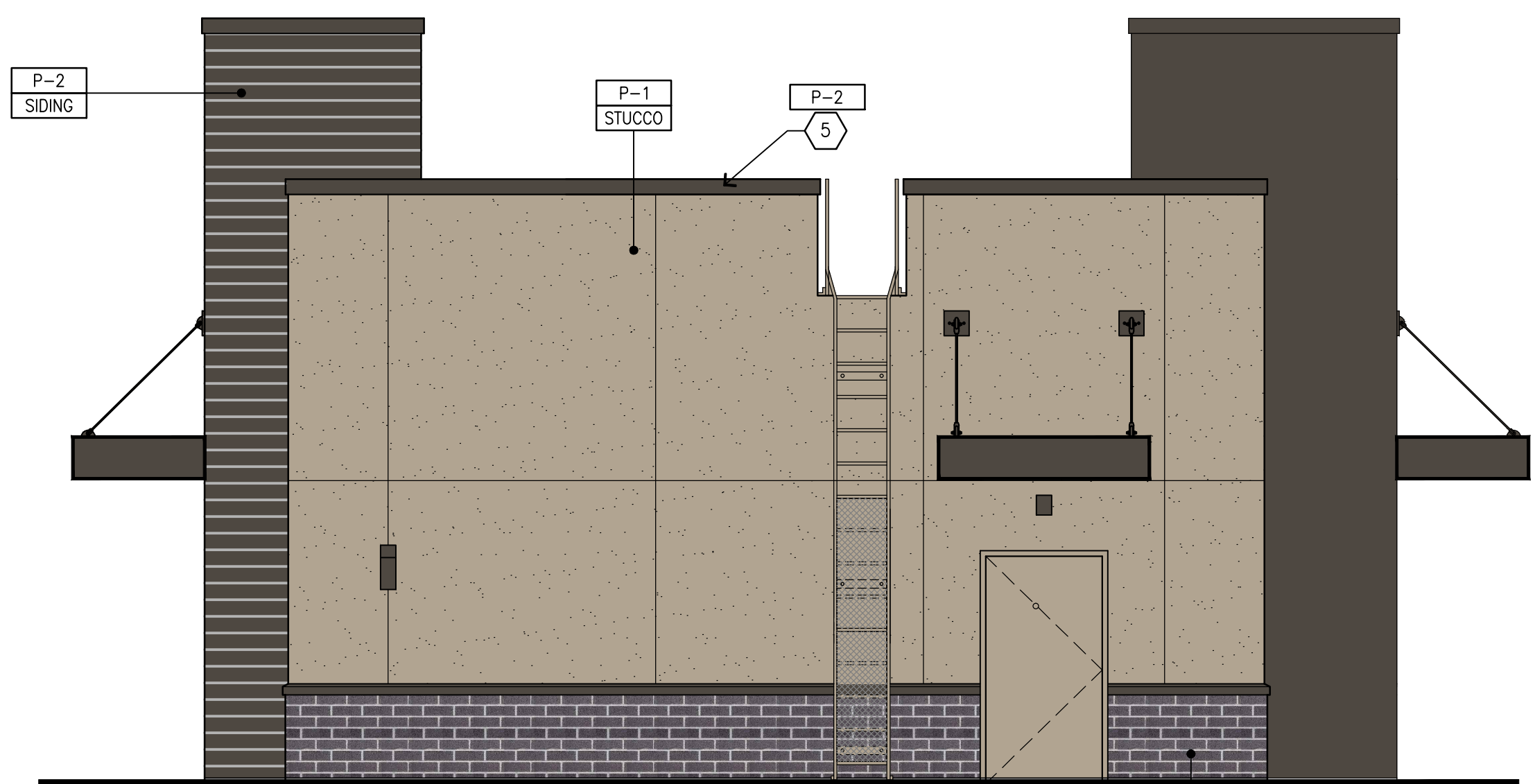




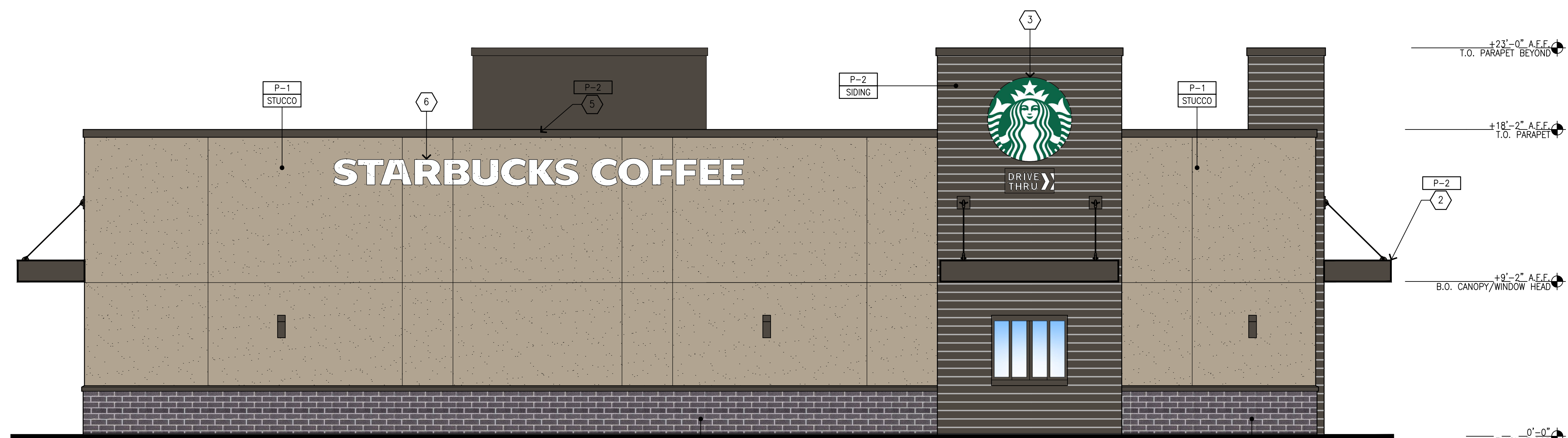
01 FRONT ELEVATION- WEST SIDE  
SCALE: 1/4"=1'-0"



02 LEFT ELEVATION- NORTH SIDE  
SCALE: 1/4"=1'-0"



03 RIGHT ELEVATION- SOUTH SIDE  
SCALE: 1/4"=1'-0"



04 REAR ELEVATION- EAST SIDE  
SCALE: 1/4"=1'-0"

**GENERAL NOTES**

A. REVEAL LOCATIONS IN FINISH SYSTEM SHOWN ARE TO ALIGN AS CLOSELY AS POSSIBLE TO ELEVATIONS.

**KEYED NOTES**

- 1 ALUMINUM ENTRANCE AND STOREFRONT SYSTEM, DARK BRONZE ANODIZED
- 2 STEEL AWNING ROD AND CLEVIS
- 3 ILLUMINATED SURFACE MOUNTED WALL SIGN
- 4 WALL MOUNTED LED FIXTURE
- 5 PRE-FINISHED SHOP FORMED METAL COPING
- 6 NON-ILLUMINATED LETTERS SIGN

**COLOR LEGEND**

- P-1 SHERWIN WILLIAMS, #7038, "TONY TAUPE"
- P-2 SHERWIN WILLIAMS, #7020, "BLACK FOX"
- P-3 MUTUAL MATERIALS, BRICK VENEER, "EBONY MISSION"

**MATERIAL LEGEND**

- STUCCO 3/8" CEMENT PLASTER, INSTALLED PER MFG. SPECIFICATIONS; TEXTURE: FINE SAND FINISH
- SIDING WOOD CLADDING OR CEMENT FIBER BOARD
- BRICK BRICK

Preliminary Not For Construction

Revision

Appr. \_\_\_\_\_  
By \_\_\_\_\_  
Date \_\_\_\_\_

Title: PRELIMINARY EXTERIOR ELEVATIONS  
STOCKTON BLVD • TWIN CITIES ROAD  
GALT, CA

For: STARBUCKS

Scale:	Horizontal	Vertical
	1/4" = 1'-0"	
Designed	Drawn	Checked
Approved	Date	08.24.15

18215 72ND AVENUE SOUTH  
KENT, WA 98032  
(425)251-6222  
(425)251-8782 FAX  
CIVIL ENGINEERING, LAND PLANNING,  
SURVEYING, ENVIRONMENTAL SERVICES



Job Number: 17232  
Sheet: A2.1 of 2