

# Stormwater Trash Load Reduction Compliance Update

---

**Ben Livsey**  
Watershed & Stormwater Management Division  
Public Works Department



**CITY OF  
OAKLAND**



# Compliance Baseline?

- **Municipal Regional Stormwater Permit (MRP)**
  - **Phase out compliance credits,**
  - **Requires new program to regulate large private parcels**
- **Meet 2025 100% trash reduction target by:**
  - **Expanding existing trash reduction programs**
  - **Installing up to an 1,870 additional full trash capture systems in the storm drain system**

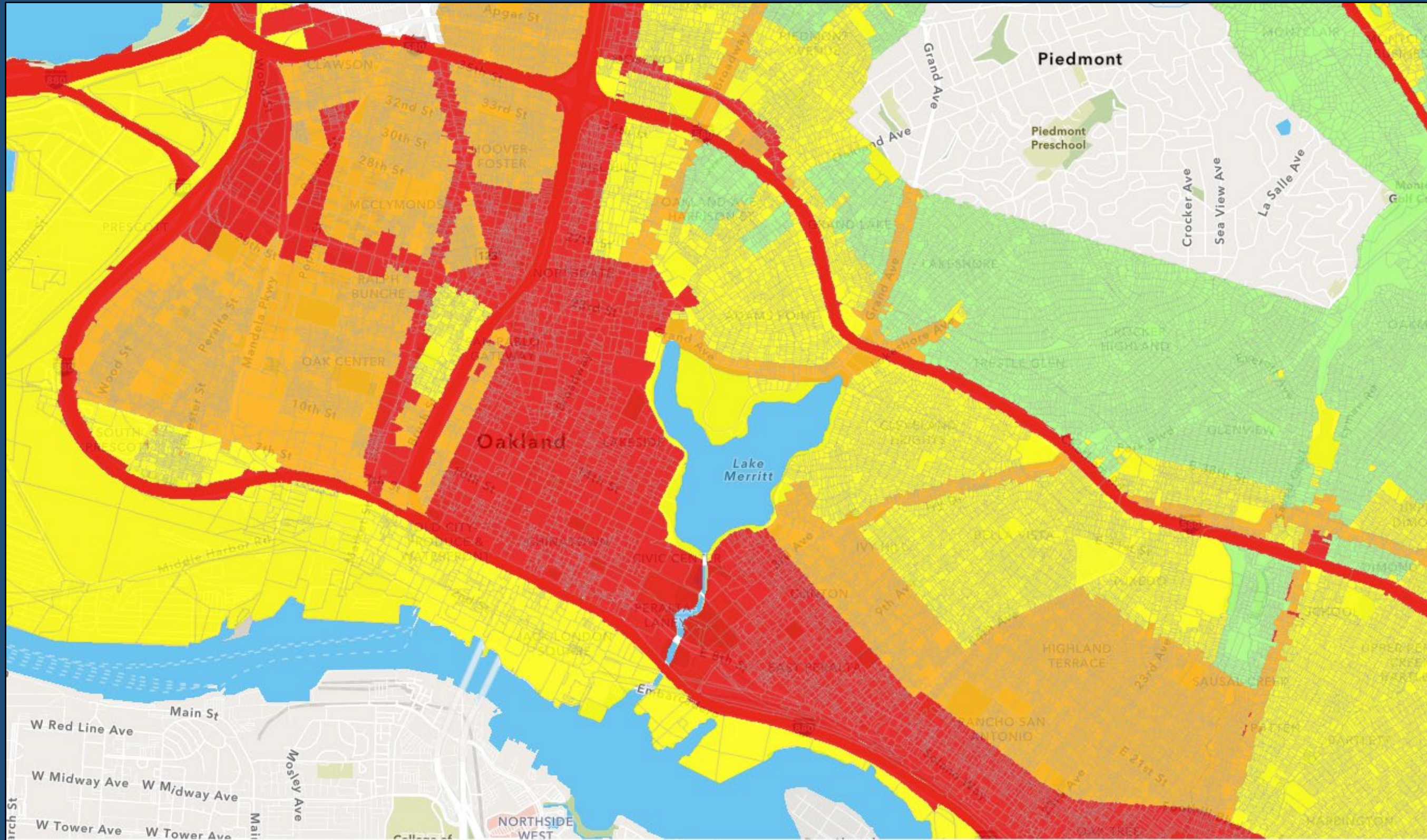
# Compliance Baseline?

- **Accounts for trash generation levels across City by land-use type**
- **New actions compared to 2009 baseline**

**Very-High trash level example**



# Compliance Baseline?

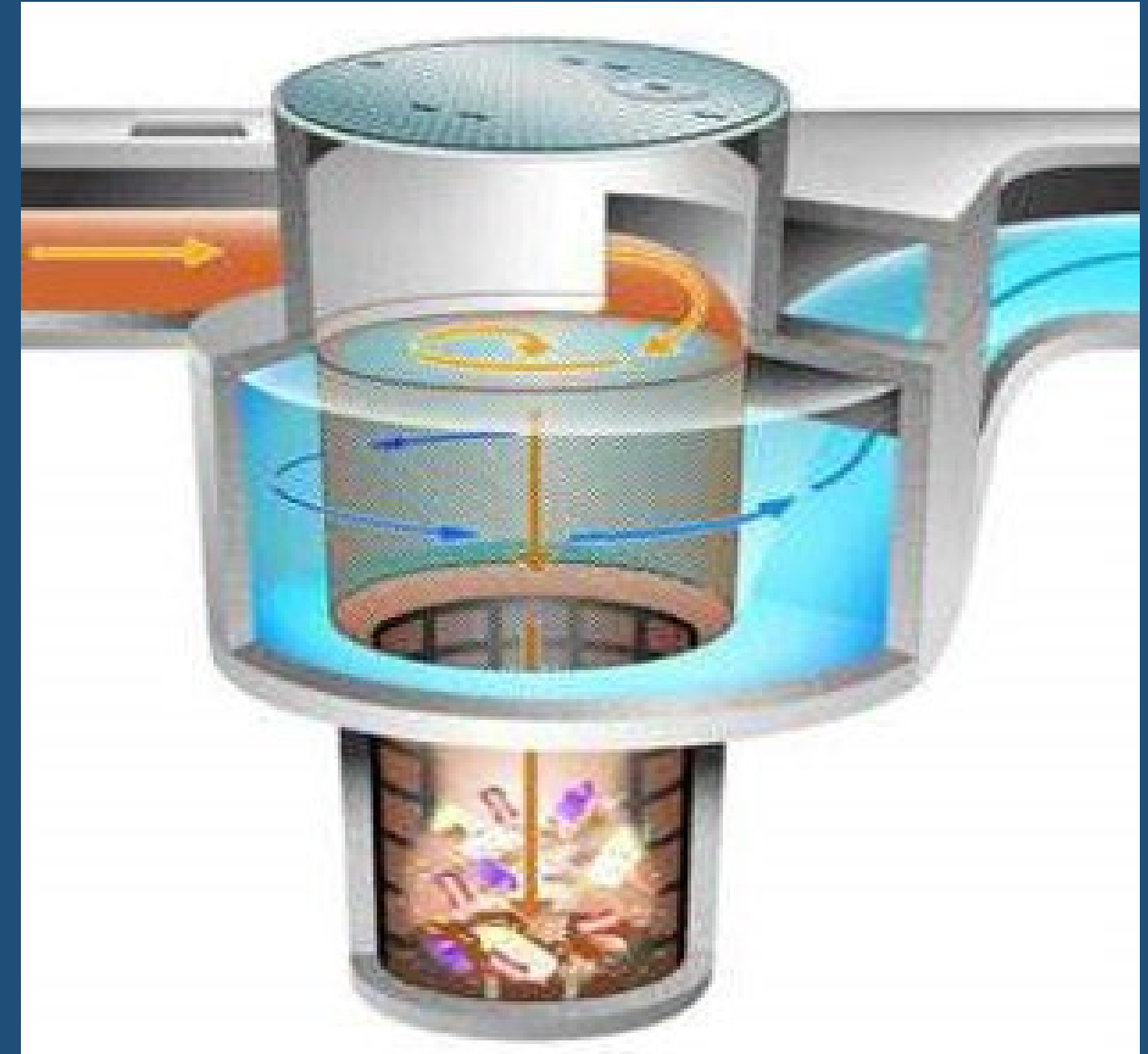


# Trash Reduction Credits = 92.8%

- **Full Trash Capture Systems (11.5%)**
- **Creek & Shoreline Cleanups (9.5%)**
- **Direct Discharge Program (15%)**
- **Other Control Measures (56.8%)**



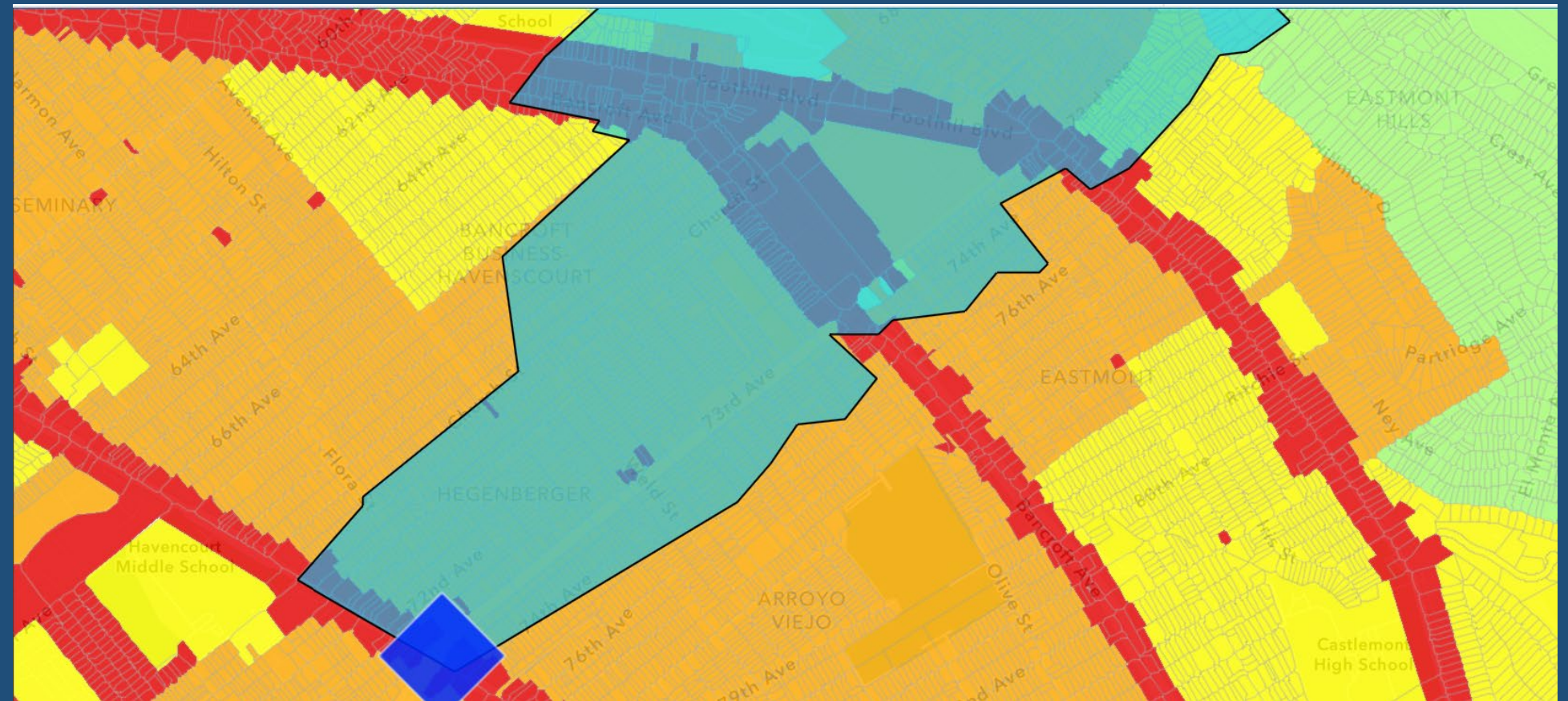
# Large Full Trash Capture Devices (12 total; 11.5%)



# Large Full Trash Capture Devices



# Large Full Trash Capture Devices





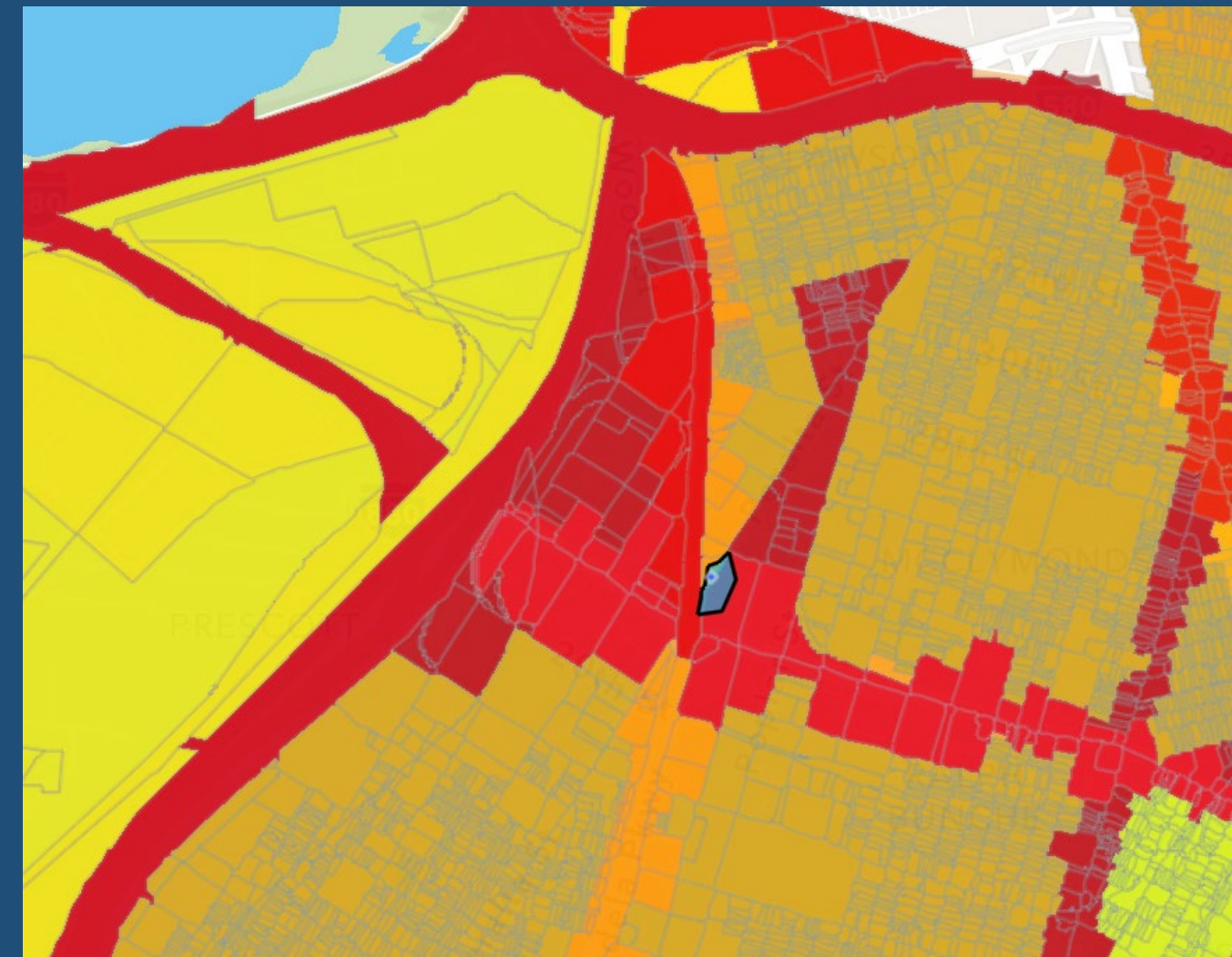
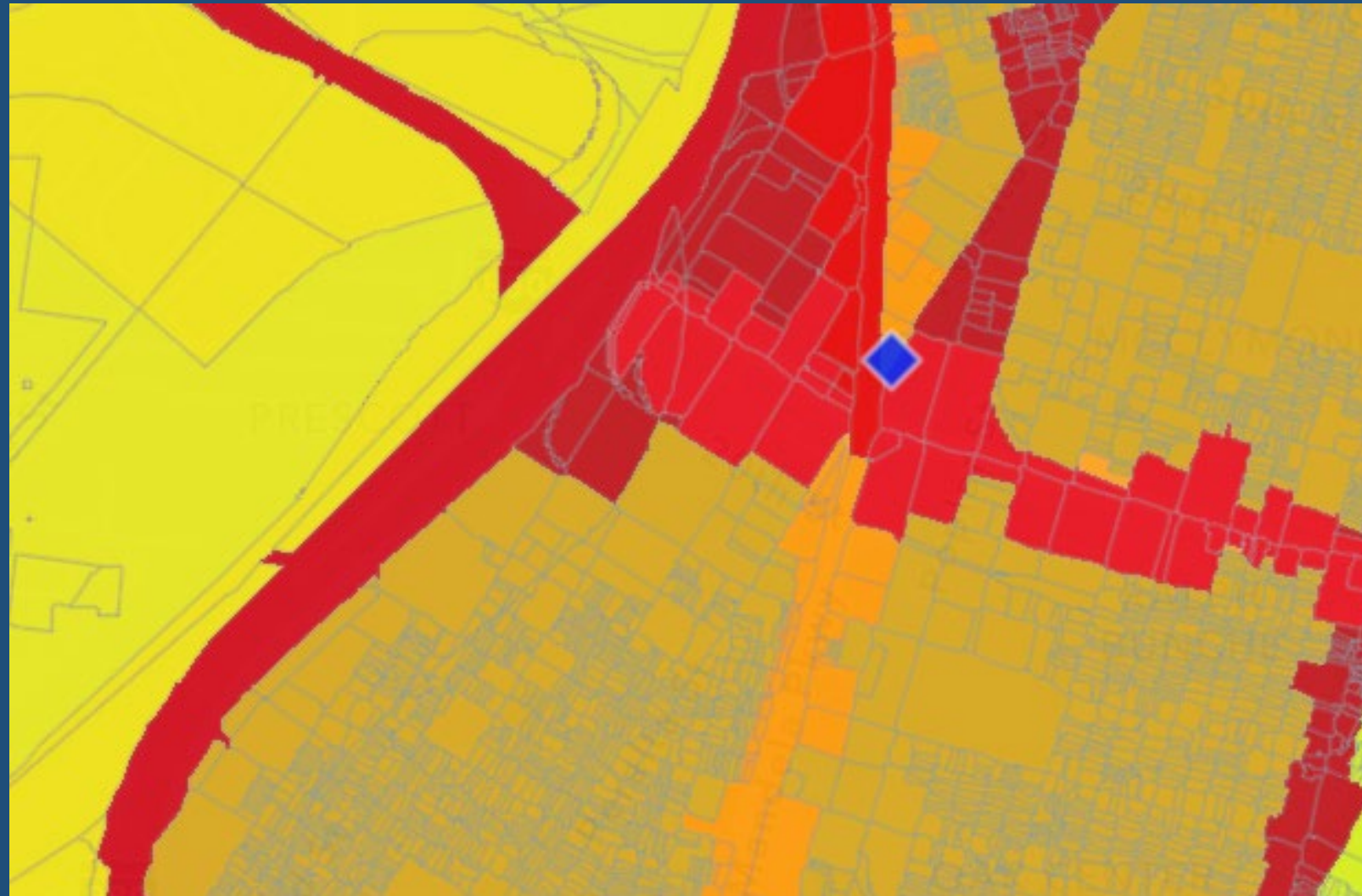
## **Small Full Trash Capture Devices (197 total; 11.5%)**

- Up to 1,870 in next 1.5 years**
- Capital costs up to \$13.5M**

# Small Full Trash Capture Devices



# Small Full Trash Capture Devices



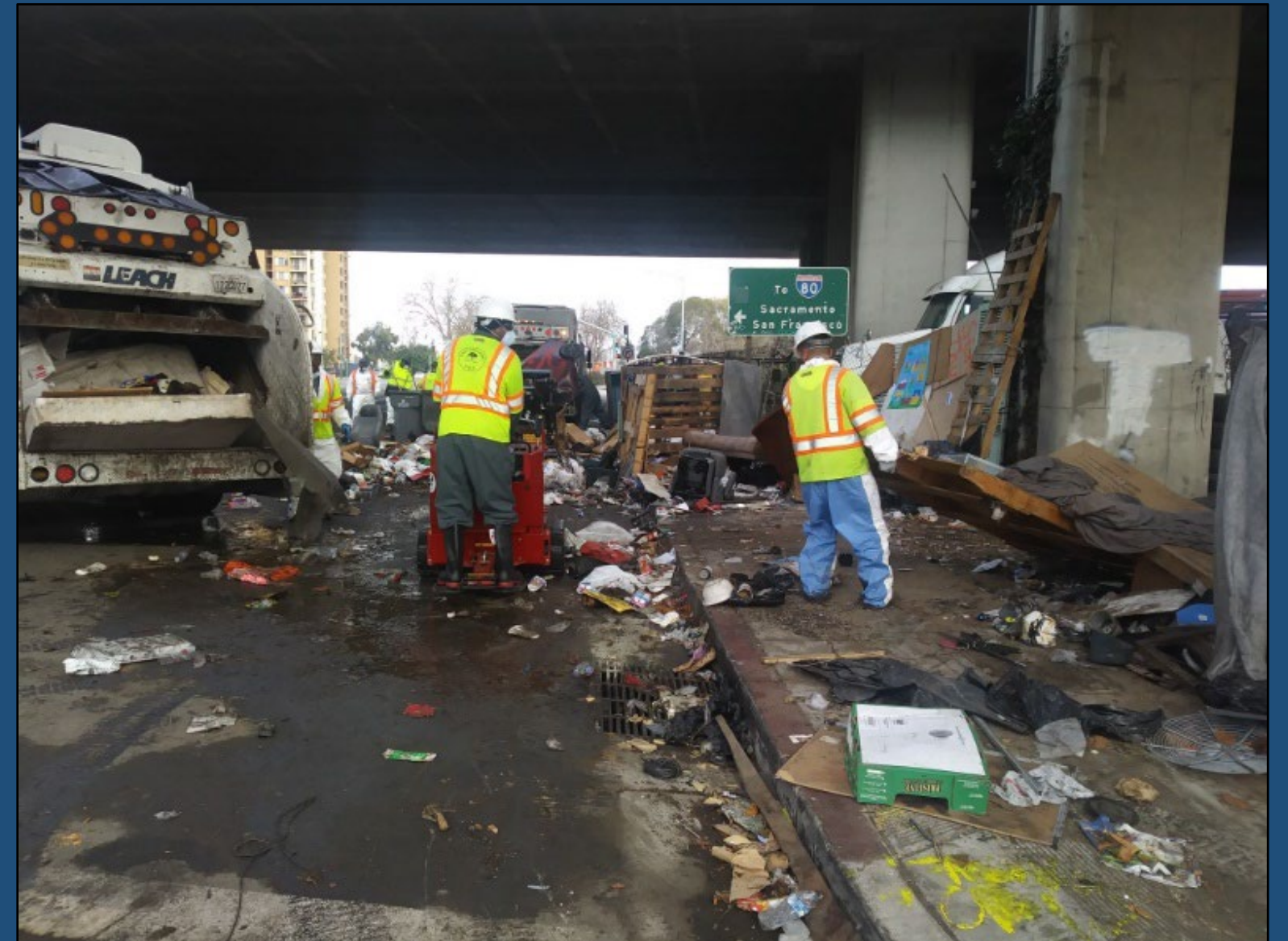
# Creek & Shoreline Cleanups (9.5%)

- **10% credit through FY 2024/25**
- **465K gallons picked up last fiscal year**
- **+106% increase in volunteer hours since 2010**



# Direct Trash Discharge Control Plan (15%)

- **Illegal dumping and homeless encampment cleanups near waterways**
- **Leverages existing programs**



# Other Trash Control Measures (56.8%)

On-land visual trash assessments (OVTAs):

- Street sweeping
- Adopt-a-Spot
- Excess Litter Fee
- Business Improvement Districts
- Business inspections
- Environmental Enforcement Officers
- Education and outreach



# **Require Large Parcels to Control Trash**

- Private parcels with storm drainage plumbed directly to City's storm drain system must control trash by June 30, 2025**
- Install full trash capture systems or implement equivalent trash reduction programs**
- Includes businesses and residential properties**

# MRP 3.0 Compliance = 31.7% Deficit

Trash Load Reduction Action	FY 25/26 Existing	Planned Actions
1) Full Trash Capture Systems	11.5%	22%
2) Creek and Shoreline Cleanups	0%	0%
3) Direct Trash Discharge Control Program	0%	0%
4) Private Land Drainage Area Control Program	0	13.3%
5) Other Control Measures	56.8%	56.8%
Total	68.3%	113.1%
Compliance Requirement	100%	
Trash Credits Needed	<b>-31.7%</b>	<b>+13.1%</b>



# Planned Actions and Challenges Ahead

## Actions

- 1. Install full trash capture devices (up to ~ 1,870)**
  - OPW and DOT projects
  - Measure Q funding
- 2. Continue and expand existing trash reduction programs**

## Challenges

- **Controls on private land drainage areas**
- **Maintain thousands of trash capture devices**

# LEARN MORE

To learn more about actions the City of Oakland Watershed & Stormwater Management Division is taking to protect water quality and restore and preserve Oaklands, creeks, lakes and watersheds visit:

[Oaklandcreeks.org](https://oaklandcreeks.org)