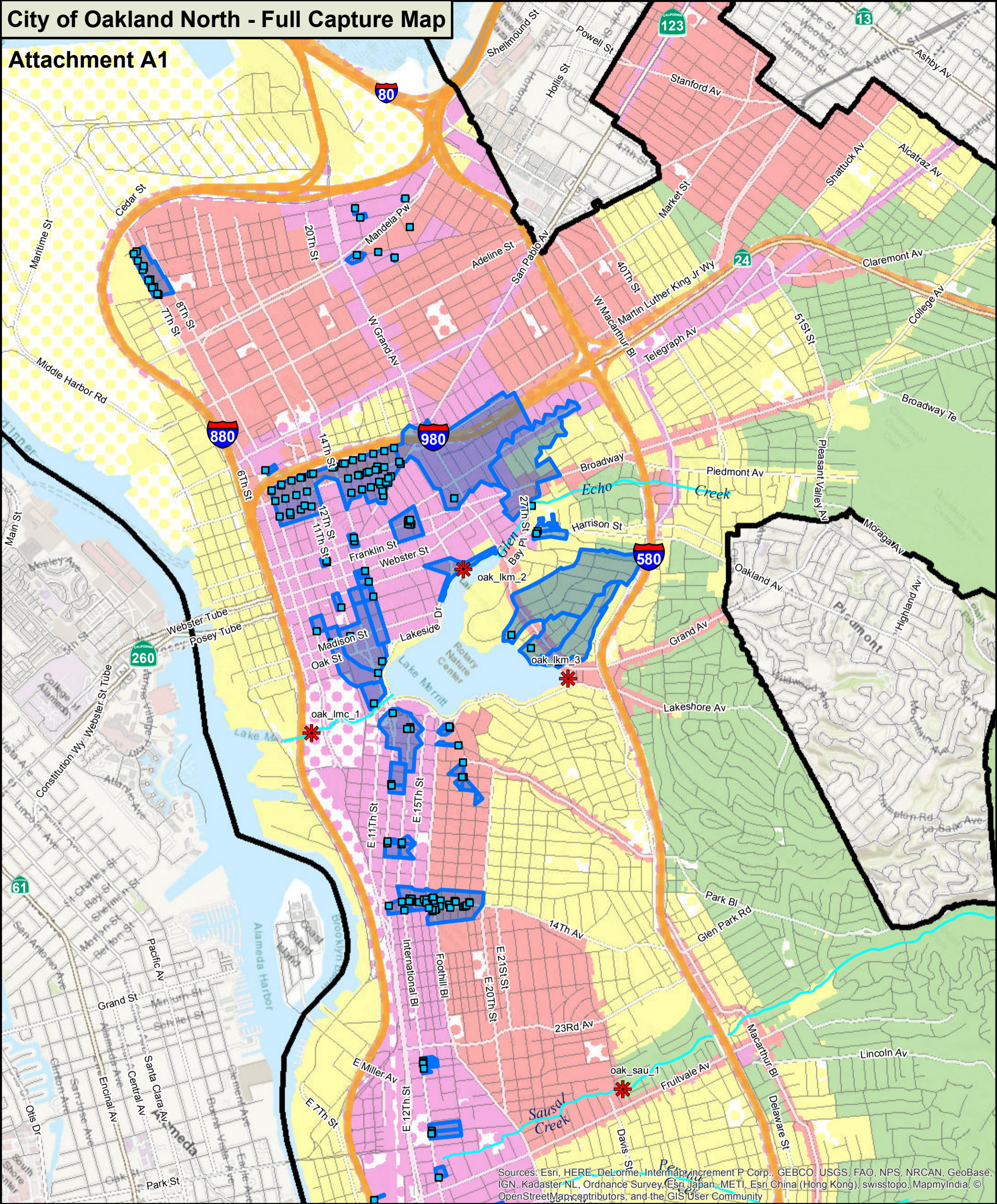


City of Oakland North - Full Capture Map

Attachment A1



Sources: Esri, HERE, DeLorme, Intermap, increment P Corp., GEBCO, USGS, FAO, NPS, NRCAN, GeoBase, IGN, Kadaster NL, Ordnance Survey, Esri Japan, METI, Esri China (Hong Kong), swisstopo, MapmyIndia, © OpenStreetMap contributors, and the GIS User Community

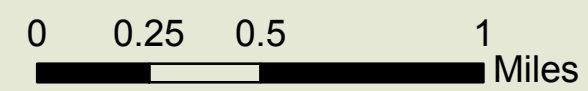
Legend

Trash Generation Category

- Low
- Moderate
- High
- Very High

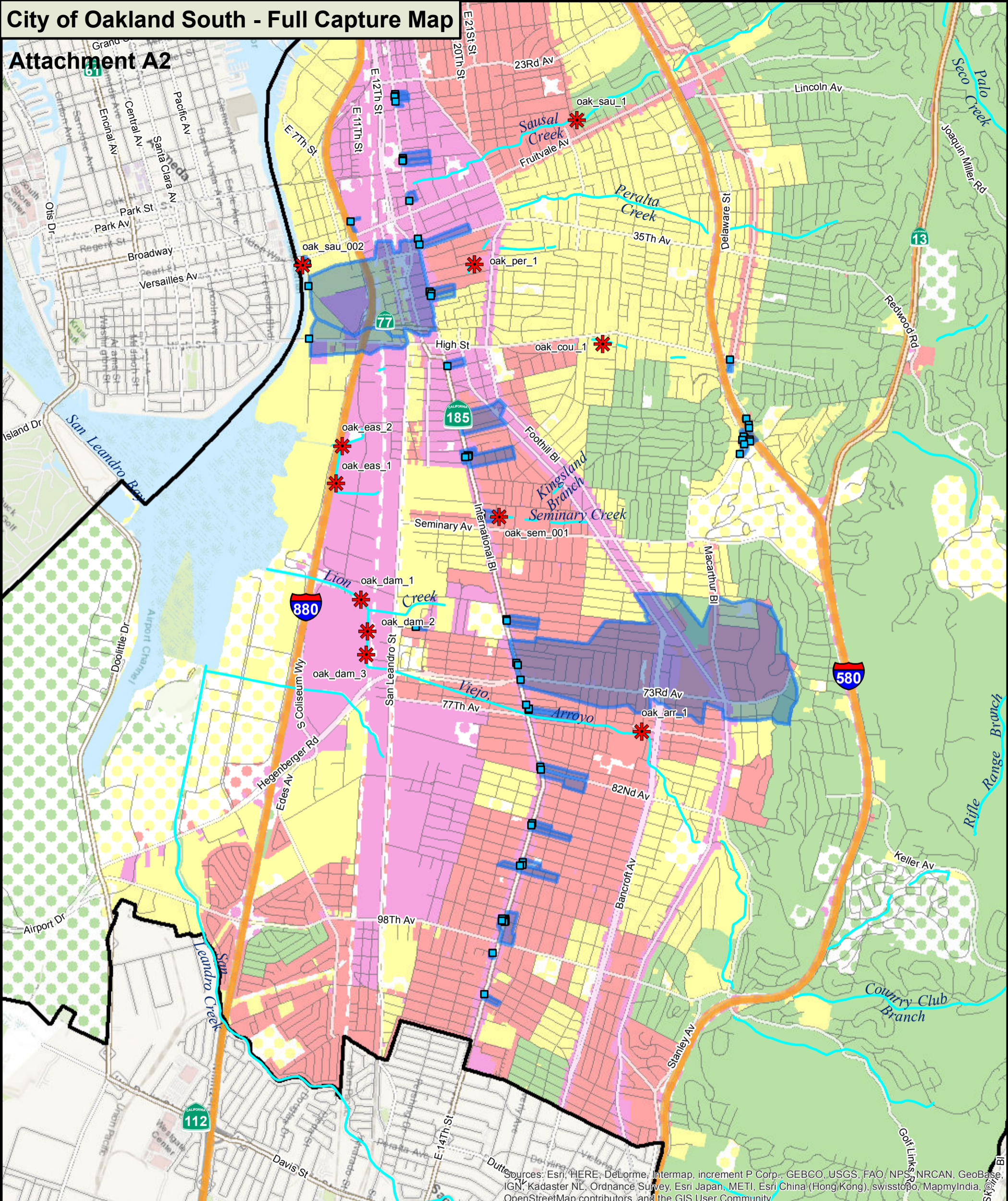
- * Creek/Shoreline Hotspot
- Full-Capture Location
- Trash Full Capture
- Non-Jurisdictional (Dot color = Generation Category)

- Streets
- Freeway
- Creeks



City of Oakland South - Full Capture Map

Attachment A2



Sources: Esri, HERE, DeLorme, Intermap, increment P Corp., GEBCO, USGS, FAO, NPS, NRCAN, GeoBase, IGN, Kadaster NL, Ordnance Survey, Esri Japan, METI, Esri China (Hong Kong), swisstopo, MapmyIndia, OpenStreetMap contributors, and the GIS User Community

Legend

Trash Generation Category

- Low
- Moderate
- High
- Very High

- * Creek/Shoreline Hotspot
- Full-Capture Location
- Trash Full Capture
- Non-Jurisdictional (Dot color = Generation Category)

- Streets
- Freeway
- Creeks

