

Alameda County Office of Education

Program Highlights



**ALAMEDA COUNTY
OFFICE OF EDUCATION**
Alysse Castro, Superintendent



OUR MISSION

**Equip the
Most Vulnerable Students and
Those Who Serve Them with the
Tools to Thrive**



OUR PRIORITIES

**Centering
our priority
student
populations**

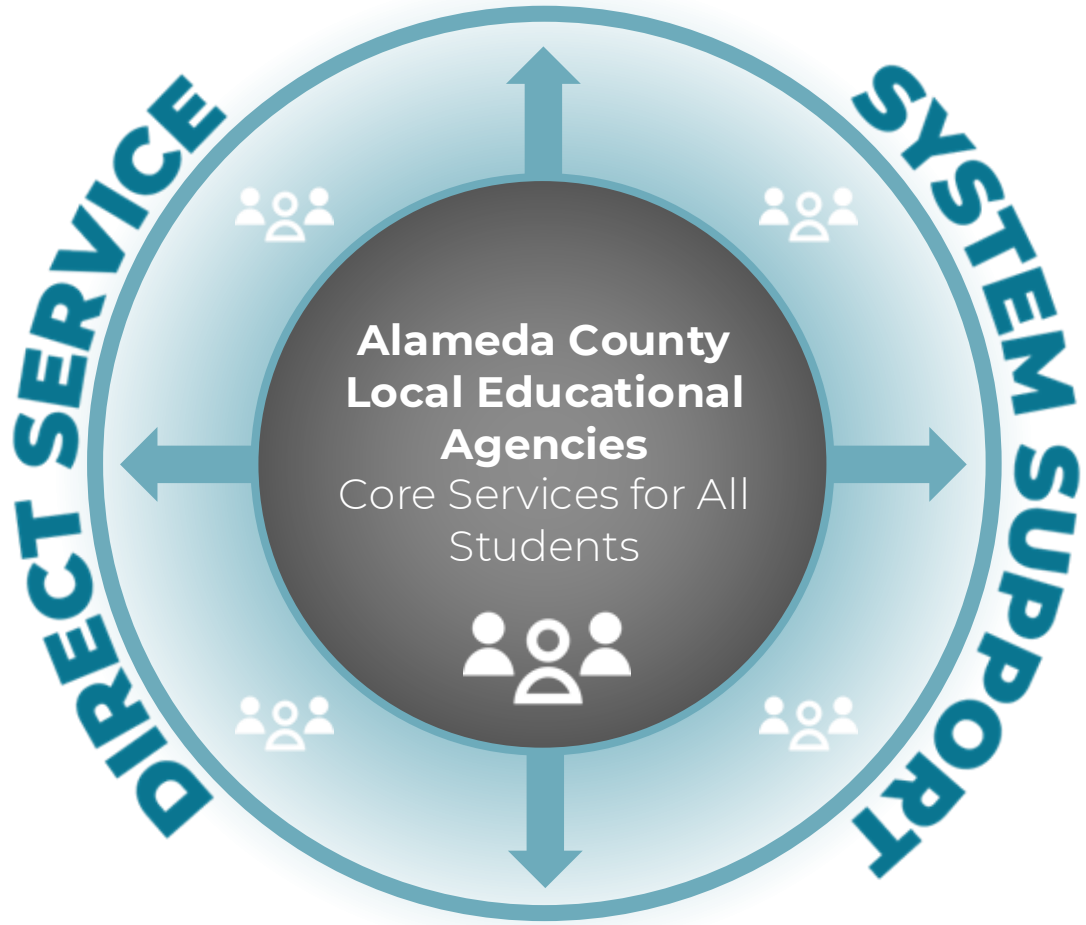
**Differentiating
supports for the
most struggling
students &
systems**

**Maximizing
resources &
minimizing
pain points**

Creating a culture of innovation

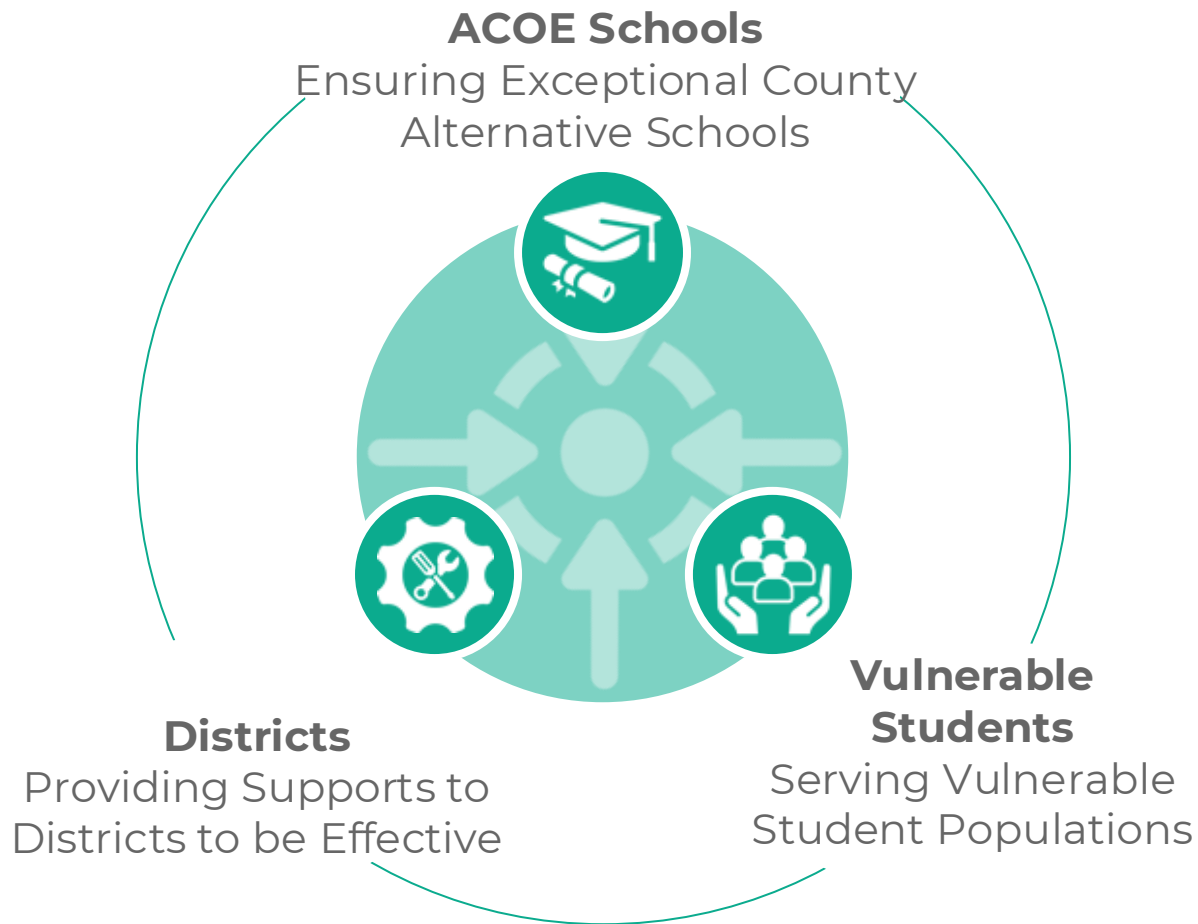
ACOE's ROLE

We wrap around
what districts can do
to expand the circle
of who is well served
by public education.



ACOE's STRATEGIES

WHO



ACOE/OUSD Celebrations...

...ACOE/OUSD Opportunities



ALAMEDA COUNTY
OFFICE OF EDUCATION
Alysse Castro, Superintendent

Students Progressing with Differentiated Assistance



ALAMEDA COUNTY
OFFICE OF EDUCATION
Alysse Castro, Superintendent

2022-23

9

Student Groups in DA

2023-24

8

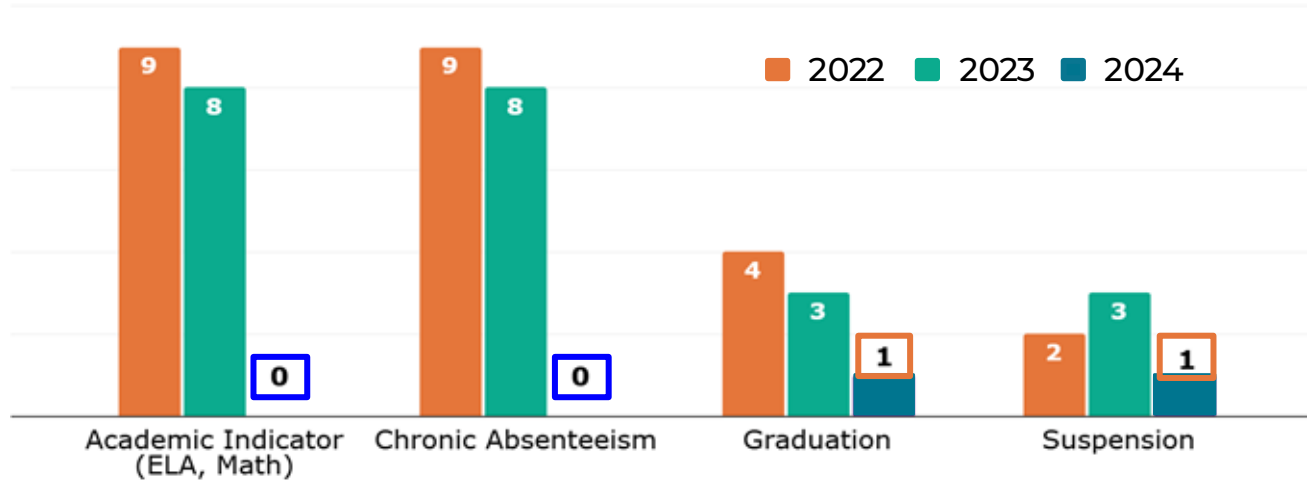
Student Groups in DA

2024-25

1

Student Group in DA

2022 to 2024 DA Student Groups By Dashboard Indicator



OUSD Returns to Full Local Control



**ALAMEDA COUNTY
OFFICE OF EDUCATION**
Alysse Castro, Superintendent

Conditions Met

- ✓ Financial systems audit
- ✓ Repaid state loan
- ✓ Concurrence by State Superintendent and State Board of Education
- ✓ Ended Trusteeship: ***OUSD is now under full local control***

ACOE/OUSD Celebrations...

...ACOE/OUSD Opportunities



ALAMEDA COUNTY
OFFICE OF EDUCATION
Alysse Castro, Superintendent



OUR PRIORITIES

**Centering
our priority
student
populations**

**Differentiating
supports for the
most struggling
students &
systems**

**Maximizing
resources &
minimizing
pain points**

Creating a culture of innovation

**Alameda County Office
of Education *exists*
to support OUSD and
other school districts**

**Every partnership
between OUSD and
ACOE puts money
in the district's
pocket.**

**Every missed
opportunity leaves
money on the
table.**

Example...

Fully Staffed Schools and Programs

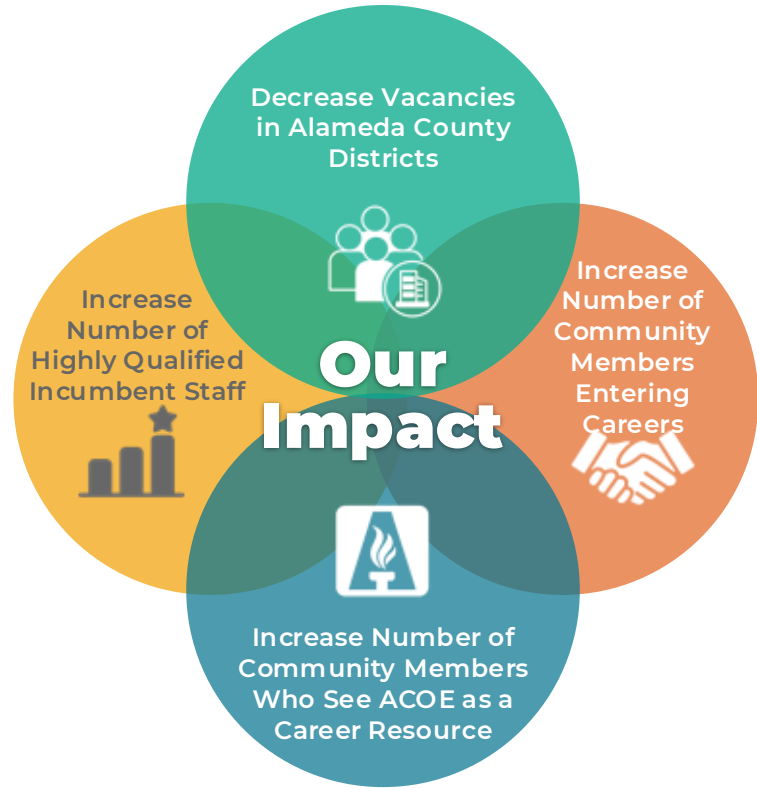


ALAMEDA COUNTY OFFICE OF EDUCATION
PROFESSIONAL ADVANCEMENT
& TRAINING HUB



ALAMEDA COUNTY
OFFICE OF EDUCATION
Alysse Castro, Superintendent

PATH's Intended Impact



Reduce vacancies for teachers, wellness coaches, principals, APs, and paras each year on the first day of school



Increase the number of qualified and diverse candidates **entering a career** by recruiting and proportionally retaining them in our programs



Increase the number of qualified and diverse **incumbent staff**, proportionally retaining them in our programs

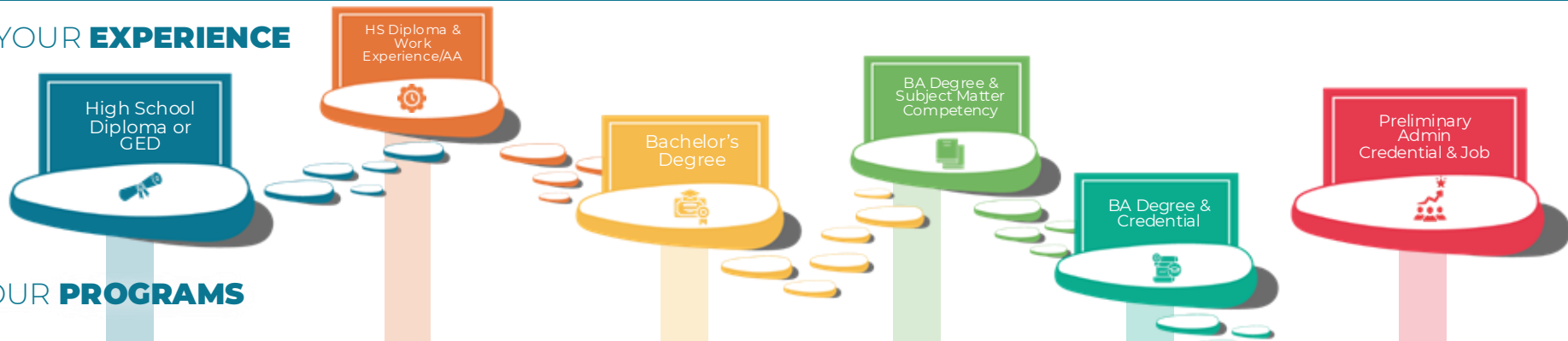


Increase the number of community members in AC who **use the resources of the county office** to enter a career

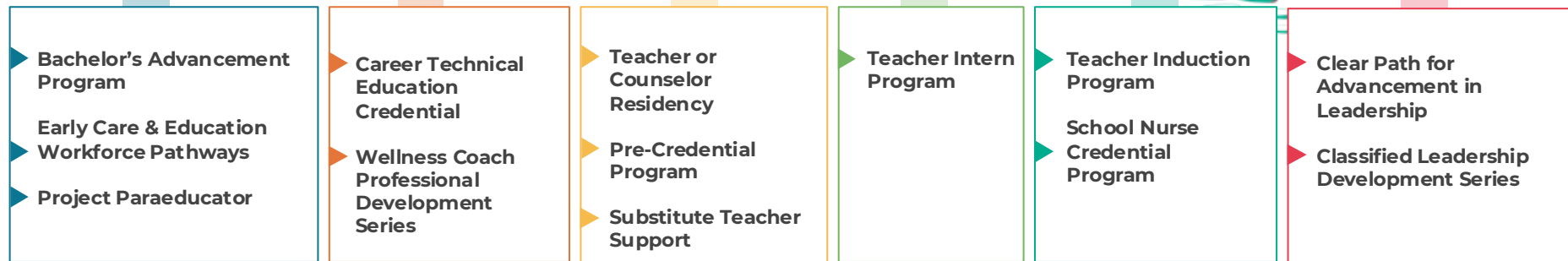


STEP ONTO THE **PATH** TO YOUR CAREER IN EDUCATION

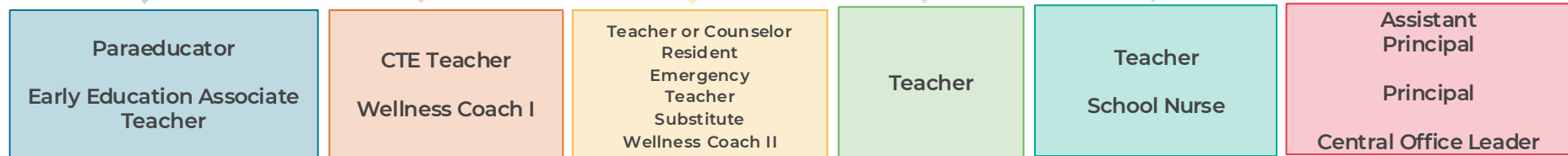
YOUR **EXPERIENCE**



OUR **PROGRAMS**



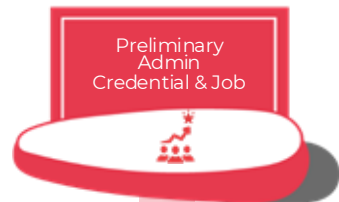
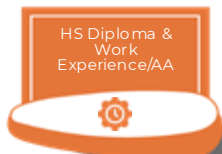
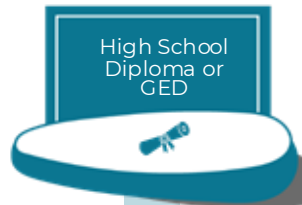
AVAILABLE **POSITIONS**





OUSD Educators Served

YOUR EXPERIENCE



OUR PROGRAMS

Project Paraeducator

16

Career Technical Education Credential

13

Pre-Credential Program

22

Teacher Intern Program

54

Teacher Induction Program

Clear Path for Advancement in Leadership

AVAILABLE POSITIONS

Paraeducator

CTE Teacher

Teacher Resident
Emergency Teacher

Teacher

OUSD-Managed Programs Support Staff in These Areas

More Opportunities



**ALAMEDA COUNTY
OFFICE OF EDUCATION**
Alysse Castro, Superintendent

Collaboration on a New Level

The [Alameda County Social Health Information Exchange \(SHIE\)](#) led by Alameda County Health integrates data from multiple sectors to provide a comprehensive view of individual and population needs, fostering a Whole Person approach to care and support.

ACOE could support...

Truancy Intervention

Social Services Alignment

Data Reporting, eg for LCAP

Health Care Reimbursement

...and more.

