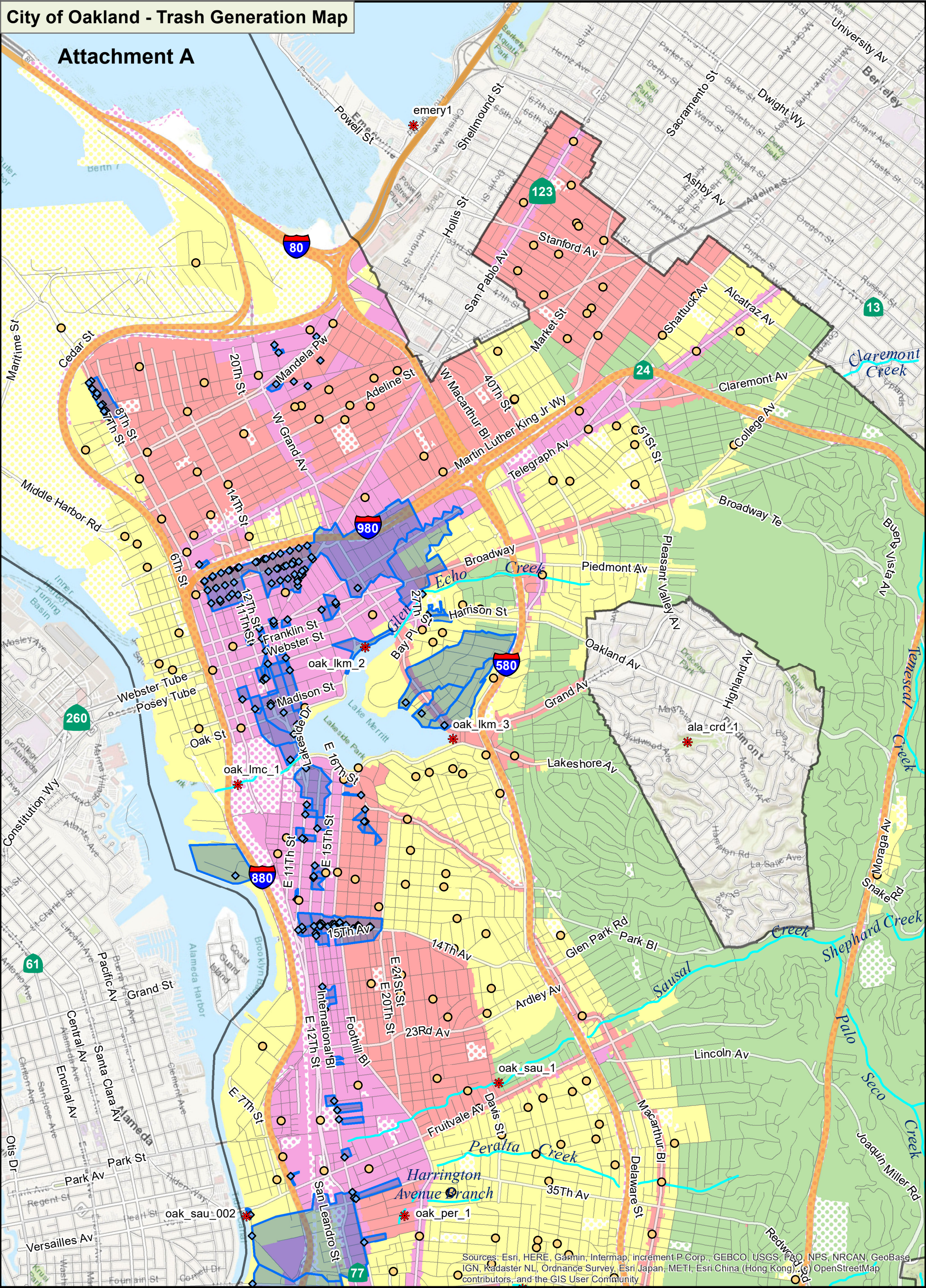


Attachment A



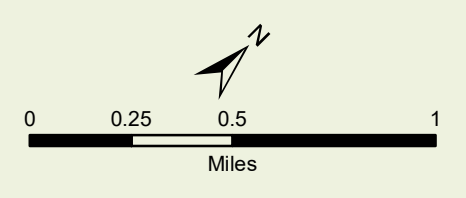
Sources: Esri, HERE, Garmin, Intermap, increment P Corp., GEBCO, USGS, FAO, NPS, NRCAN, GeoBase, IGN, Kadaster NL, Ordnance Survey, Esri Japan, METI, Esri China (Hong Kong), Swisstopo, Mapbox, contributors, and the GIS User Community

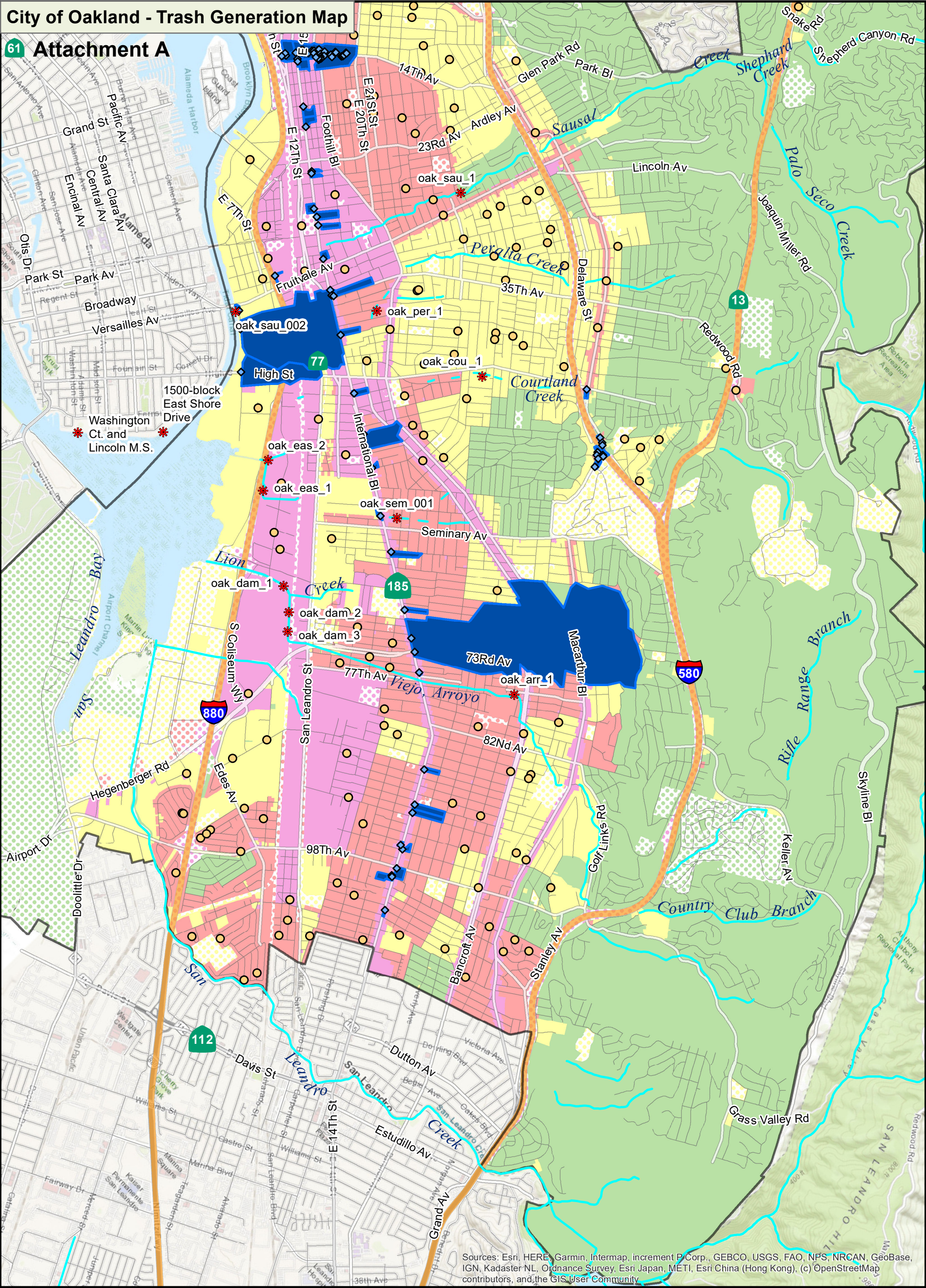
Trash Generation Category

- Low
- Moderate
- High
- Very High

- On-Land Visual Assessment Site
- Creek/Shoreline Hotspot
- Full-Capture Location
- Full Trash Capture
- Non-Jurisdictional (Dot color = Generation Category)

- Street
- Freeway
- Agency Boundary
- Creek





Sources: Esri, HERE, Garmin, Intermap, increment P Corp., GEBCO, USGS, FAO, NPS, NRCAN, GeoBase, IGN, Kadaster NL, Ordnance Survey, Esri Japan (METI), Esri China (Hong Kong), (c) OpenStreetMap contributors, and the GIS User Community

Trash Generation Category

- Low
- Moderate
- High
- Very High

- On-Land Visual Assessment Site
- Creek/Shoreline Hotspot
- Full-Capture Location
- Full Trash Capture
- Non-Jurisdictional (Dot color = Generation Category)

- Street
- Freeway
- Agency Boundary
- Creek

