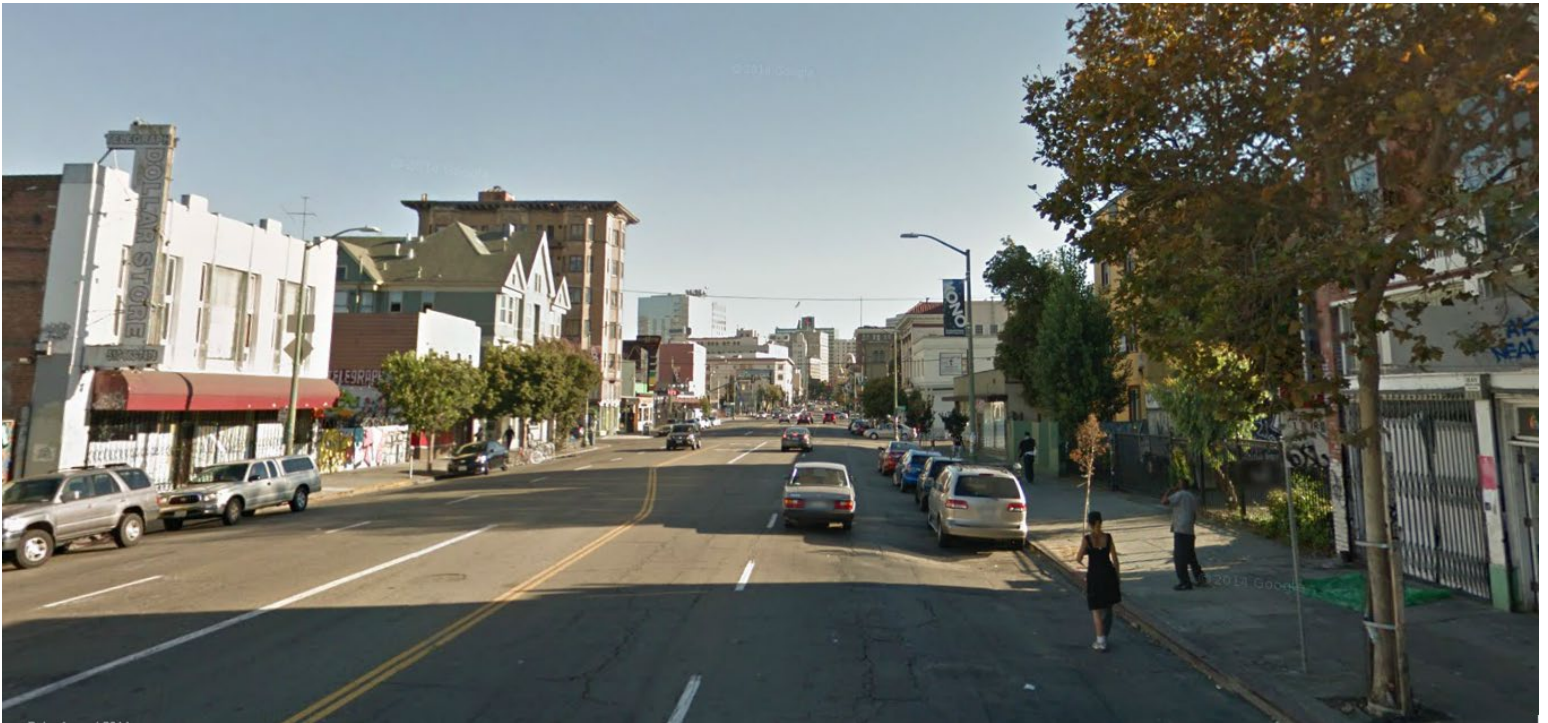


Option 1: Seven auto lanes (Pre-interim project condition, five travel lanes and two parking lanes)



Option 2: Interim Protected Bike Lanes (Existing condition)



Option 3: Permanent Protected Bike Lanes (Continuous concrete protected bike lanes, bus boarding islands, and two protected intersections)



Option 4: Enhanced Buffered Bike Lanes (Conventional bike lanes with painted buffers between the bike lane and moving vehicles and between the bike lane and parked cars, concrete bus boarding islands, and two protected intersections)

Option 5: Enhanced Buffered Bike Lanes with Curb Management (Option 4 plus demand-responsive parking and loading management in effect evenings & weekends)

