

CITY OF OAKLAND
AGENDA REPORT

FILED
OFFICE OF THE CITY CLERK
CITY OF OAKLAND
2008 JAN 10 PM 3:32

TO: Office of the City Administrator
ATTN: Deborah Edgerly
FROM: Community & Economic Development Agency
DATE: January 22, 2008

RE: Resolution Authorizing The City Administrator To Negotiate And Enter Into A Professional Services Agreement With Biggs Cardosa Associates, Inc. To Provide Professional Engineering Services For The Adeline Street Bridge Repair (Project No. C319710) For An Amount Not To Exceed Two-Hundred Fifteen Thousand Dollars (\$215,000.00)

SUMMARY

A resolution has been prepared authorizing the City Administrator to negotiate and enter into a professional services agreement with Biggs Cardosa Associates, Inc. for an amount not to exceed \$215,000.00. Biggs Cardosa Associates, Inc. will provide professional civil engineering and related design services for the Adeline Street Bridge Repair Project (Project No. C319710).

Recent California Department of Transportation (Caltrans) Bridge Inspection Reports and field observations have determined that the Adeline Bridge is in need of structural repairs. Because of the urgency of the needed repairs, the City will use Measure B ACTIA Funds (2211) to complete the design work and later seek reimbursement from Caltrans to recover all design costs. Construction costs will be funded by MTC and will be available when the design is completed. It is recommended that the resolution be approved.

FISCAL IMPACT

The professional services agreement will be for a total amount not to exceed \$215,000.00. The City is using Measure B ACTIA Funds (2211) set aside for On Call Street Projects to complete the design. Funding for consultant services is available as shown in the table below:

| Fund | Organization | Account | Project No. | Amount |
|---|--|--|--------------------|---------------------|
| Measure B ACTIA Funds (2211) | Capital Improvement Projects - Streets and Structures Organization (92242) | Consultant Contract Account (54411) | C319710 | \$215,000.00 |
| Total Funds Available for Consultant Contract: | | | | \$215,000.00 |

Item#: _____
Public Works Committee
January 22, 2008

It is anticipated that the City will be reimbursed for the design cost by Caltrans when funding is available in the next fiscal year.

BACKGROUND

The Federal Highway Administration (FHWA) requires that all bridges be inspected on a bi-annual basis for structural performance, deficiencies and maintenance needs. Under an agreement between Caltrans and city governments, Caltrans engineers inspect all of the City of Oakland bridges.

Adeline Street Bridge, which is a 970-ft. long reinforced concrete bridge, has been inspected by Caltrans engineers under this agreement. The most recent inspection report calls for the repair of the southerly support of the bridge and the expansion joints. Further damage to the support may jeopardize the safety of the bridge. Adeline Street Bridge is used extensively by trucks going to and coming from the Port of Oakland. In addition to the repair of the southerly support, the report also calls for constructing an access behind the northern support of the bridge, sealing the bridge surface, replacing the bridge expansion joints, repairing concrete spalls and repairing the chainlink fence on the bridge. The design for all these improvements will be included in the final construction documents.

In September 2006, the City of Oakland applied for funding from Caltrans for the amount of \$2,384,000.00 to fund the design and construction of the bridge repair under their Bridge Preventive Maintenance Program (BPMP) for Adeline Street Bridge. According to Caltrans staff, funding under this program will not be available until fiscal year 08/09.

To expedite the bridge repair process, the City is using ACTIA Measure “B” funds to complete the design of the repair. The City will then apply to Caltrans for reimbursement when the funding becomes available. This process has been agreed upon by Caltrans. It is anticipated that the funds for construction of the project should also be available by the time the design is completed.

In order to qualify for reimbursement, Caltrans Local Assistance procedures for the consultant selection process were followed.

Selection Process

On July 6, 2007, staff issued a Request for Proposals (RFP) for civil engineering design services. Notices were sent to registered firms and organizations and the project was advertised in local newspaper and trade publications. This outreach effort resulted in a pre-proposal meeting on July 11, 2007 that was attended by eight participants.

On August 10, 2007, the City received three proposals for design services for this project. The prime consultants who submitted proposals were:

- Biggs Cardoso, Inc.
- Earthquake and Structures, Inc.
- Jacobs Engineers

Since the City will be applying for reimbursement to Caltrans, the Disadvantaged Business Enterprise (DBE) program has been used instead of the Local/Small Local Business Enterprise program. All three teams, which included a total of 11 consulting firms, met the DBE participation requirements.

Selection Criteria

A qualification-based selection process was used to rank proposals. The firms were evaluated based on the following criteria:

- Quality of the proposal, responsiveness and conformance to RFP requirements;
- Experience and professional background of project team and organization;
- Overall experience of the project team relative to the project;
- The design teams experience and qualification relative to the specific need for Adeline Street Bridge repair;
- Consultant's prior experience relevant to work with City, Port of Oakland, Caltrans and Union Pacific;
- The team's approach to the project, including a specific outline of how the work will be performed;
- References.

A panel of four members reviewed the proposals against these criteria. The panel included a representative of the Port of Oakland and staff from the Community and Economic Development Agency. This panel selected all three firms to proceed to the next phase.

On September 14, 2007, the teams made presentations and were interviewed by the same panel. Based on the presentations and interviews, Biggs Cardoso, Inc. was selected as the team most qualified to complete this project. *Attachment A* show copies of proposal evaluation and interview ranking sheets.

The team rankings are summarized below.

| <u>Team</u> | <u>Number of Top Rank</u> |
|-----------------------------------|---------------------------|
| • Biggs Cardoso, Inc. | 1 |
| • Earthquake and Structures, Inc. | 2 |
| • Jacobs Engineers | 3 |

The Biggs Cardoso team demonstrated strong experience in the type of services requested for this project.

Item #: _____
Public Works Committee
January 22, 2008

Local Participation

Since the City will be applying for federal funding for this project, the Disadvantaged Business Enterprise (DBE) program was applied instead of the City L/SLBE program. The DBE annual overall goal for the City of Oakland is 8.2% race neutral. Although there is no specific goal for DBE participation on this project, consultants were encouraged to obtain DBE participation.

The three teams were reviewed for compliance with the DBE Program goals and the following table represents their participation percentages:

| <u>Team</u> | <u>DBE Participation</u> |
|-----------------------------------|--------------------------|
| • Biggs Cardosa, Inc. | 23% |
| • Earthquake and Structures, Inc. | 74% |
| • Jacobs Engineers | 16% |

All three proposals were evaluated for compliance by Department of Contracting and Purchasing. Their evaluations are shown on *Attachment B*. The table below shows Biggs Cardosa, Inc. design team information. While the DBE Program is used to certify these firms, the prime consultant, while not certified, is a local business.

| Participating Firm | Discipline | Location | Status | % of Project Work |
|---------------------------|----------------------------------|-----------------|---------------|--------------------------|
| Biggs Cardosa, Inc. | Prime Consultant | Oakland, CA | Un Certified | 77% |
| HQE, Inc. | Civil Engineering Sub-consultant | Oakland, CA | Certified | 22% |
| Parikh Consultants | Geotechnical Sub-consultant | Milpitas, CA | Certified | 3% |

Qualifications

Biggs Cardosa has extensive experience in bridge rehabilitation and bridge seismic retrofit projects and has completed design and construction of various local and statewide bridge projects.

KEY ISSUES AND IMPACTS

The south end support of Adline Street Bridge is in need of repairs and further damage to this support may affect bridge safety. *Attachment C* shows photos of damaged support. In addition, to investigate the condition of the north end support, it is required that an access be provided behind the support through existing walls. This project will also provide a design for that needed

pathway. Although federal funding is not available at this time for design and construction, it is anticipated the City will be reimbursed for design costs next year and that federal funding will be available for construction by the time design is completed in October 2008. A copy of the project schedule is shown as *Attachment D*.

Approval of this resolution will facilitate the initiation of the project design and expedite the needed repair.

PROJECT DESCRIPTION

The proposed work consists of conducting a detailed investigation into the structural condition of the southerly support of the bridge; designing and preparing construction documents for the needed repairs including expansion joint fillers at both ends of the bridge, providing access behind the northerly support, sealing the bridge deck, repairing concrete spalls and repairing chainlink fence on the bridge.

As part of the subject professional services agreement, Biggs Cardosa, Inc. will provide bridge and civil engineering design services for preparing construction documents, and provide bid and construction support. The construction documents will include, in general, complete plans, specifications, and construction cost estimates for the project. The total construction cost of this project is estimated at \$2,170,000.00.

SUSTAINABLE OPPORTUNITIES

Economic: The projects will generate business tax, sales tax, and other revenues for the City by those firms who work on the project.

Environmental: Environmental factors and opportunities will be considered and incorporated to the extent feasible. Consultants will be required to consider the use of recycled materials in the products specified and integrate other environmental opportunities, waste reduction and energy conservation.

Social Equity: The proposed civil engineering services will design to improve the safety of the bridge and the City's infrastructure.

DISABILITY AND SENIOR CITIZEN ACCESS

Consultants will be required to design the improvements to the extent possible in compliance with the physical access requirements of applicable accessibility codes and the Americans with Disabilities Act.

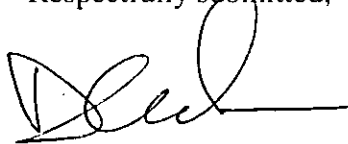
RECOMMENDATION AND RATIONALE

Staff recommends that the City Council approve the resolution authorizing the City Administrator to negotiate and enter into a professional services agreement with Biggs Cardosa, Inc. for an amount not to exceed \$215,000.00. Biggs Cardosa, Inc. will provide professional civil engineering and related design services for the Adeline Street Bridge Project (Project No. C319710).

ACTION REQUESTED OF THE CITY COUNCIL

Staff recommends that the City Council approve the resolution.

Respectfully submitted,

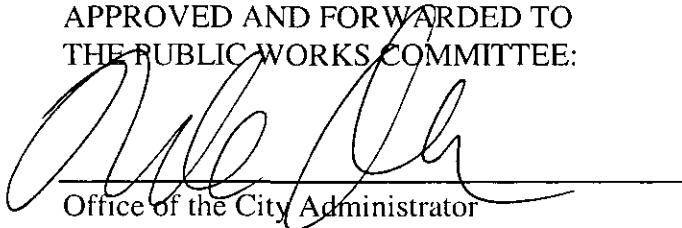


Dan Lindheim
Interim Director
Community and Economic Development Agency

Reviewed by:
Michael Neary, P.E.
Deputy Director,
Community & Economic Development Agency
Design & Construction Services Department

Prepared by:
Mohammad Barati, P.E.
Acting Supervising Civil Engineer

APPROVED AND FORWARDED TO
THE PUBLIC WORKS COMMITTEE:


Office of the City Administrator

Project: Adline Street Overpass Repair

Date: _____

Proposer: _____

Evaluator: _____

| EVALUATION CRITERIA | | POINTS ASSIGNED (0-100) | X | WEIGHTED FACTOR = | SCORE |
|-----------------------------------|---|-------------------------------|---|----------------------|-------|
| a. | Overall quality of the proposal. Responsiveness and conformance to RFP requirements for content and format. | | X | 10% | |
| b. | Quality and appropriateness of proposed project team. Professional experience and background of prime consultant and sub-consultants. | | X | 15% | |
| c. | Appropriate (type) personnel - principals, project manager and other personnel - with required licensure, experience and skills relevant to this project. The availability of the qualified personnel for this project. | | X | 15% | |
| d. | Prime consultant's and sub-consultants' prior experience and ability in Bridge Repair and Rehabilitation design, project management, scheduling, cost estimating, and budget management. | | X | 25% | |
| e. | Prime consultant's prior relevant experience and ability to work with City staff, other agencies (e.g. Caltrans, Union Pacific, Port of Oakland) and translate City requirements into a successful project. | | X | 15% | |
| f. | Quality and appropriateness of proposed project approach and organization. Knowledge and experience in working with specific codes, regulations and agencies relative to this project. | | X | 20% | |
| TOTAL WEIGHTED SCORE (TWS) | | | | | |

Scoring:

- | | |
|-------------------------|-----------------------|
| 90 - 100 = Excellent | 60 - 69 = Fair |
| 80 - 89 = Above Average | 50 - 59 = Poor |
| 70 - 79 = Average | 0 - 49 = Unacceptable |

CONSULTANT INTERVIEW FORM

FOR

DESIGN SERVICES

For ADELIN STREET OVERHEAD, BRIDGE NO. 33C0028

NAME OF FIRM (S): _____

PROJECT MANAGER: _____

INTERVIEWER: _____
(Print Name) (Signature)

| RATING CATEGORY | GIVEN SCORE | WEIGHT FACTOR | ADJUSTED SCORE |
|--|-------------|---------------|----------------|
| <i>Demonstrated relevant experience:</i> Extent and type of previous participation on similar projects. Graphic examples of similar projects. Current experience with local projects of similar work. | | .20 | |
| <i>Qualifications of project manager:</i> Ability to relate to the interviewers and gain their confidence; leadership, communication and technical skills; technical qualifications. Experience in managing this size and type project. Full commitment to the project. | | .15 | |
| <i>Cohesiveness and appropriateness of the project team and organization:</i> Is the team complete? Is team appropriate for the scope of the project? Has the team worked together before? Will City staff be able to manage and work with them? | | .10 | |
| <i>Approach and understanding of the design and management of the project:</i> Understanding of program requirements, scope complexities and issues of the project, including interfacing with the community, regulatory agencies, and the City. Adequacy of proposed methods and procedures for controlling cost, schedules and quality. Creativity and innovation. | | .25 | |
| <i>Quality and completeness of presentation:</i> Did project manager have lead role? Did they present information in a knowledgeable, clear and concise manner? | | .10 | |
| <i>Responsiveness to questions:</i> Are answers meaningful, relevant, knowledgeable, clear, concise, and to the point? | | .20 | |
| TOTAL WEIGHTED SCORES (TWS) | | | |
| TOTAL POINTS (L/SLBE) | | | |
| GRAND TOTAL: | | | |

Scoring Guidelines

- Excellent: 90 to 100 points
- Good: 80 to 89 points
- Satisfactory: 70 to 79 points
- Fair: 60 to 69 points
- Unsatisfactory: 0 to 59 points

Tabulated by: _____ Date: _____

Dept. Head Initials: _____

For Informational Purposes:

50% Local Employment Program(LEP)/15% Oakland Apprenticeship Program

The numbers listed below show total project hours; LEP hiring goal; actual resident employment; actual Oakland apprentice work hours; the 15% Apprenticeship utilization goal; and difference between the 15% Apprenticeship utilization goal and actual hours worked by Oakland apprentices.

| Company Name | Total Hours | Resident Hours | LEP Goal Hours | Oakland Apprentice Hours | 15% Apprentice Utilization Goal | 15% Apprentice Shortfall |
|--------------|-------------|----------------|----------------|--------------------------|---------------------------------|--------------------------|
| N/A | N/A | N/A | N/A | N/A | N/A | N/A |

Should you have any questions you may contact Dasco Munoz at 238-3970

DBE Participation Consultant 1

Project Name: RFP for Civil Engineering Design Services for Adeline Street Overhead in Oakland California

| Project No.: CCO2857 | | | | | | | | | | |
|--|---|----------|--------------|--------|---------|-------------|---------------|---|-------|-------|
| Discipline | Prime & Subs | Location | Cert. Status | DBE % | Total % | DBE Dollars | Total Dollars | Certified DBE/WBE | | |
| | | | | | | | | Ethn. | DBE | WBE |
| PRIME Survey Testing Geotechnical | ESI, Inc. | Oakland | UB | 67.00% | 67.00% | 110,000.00 | 110,000.00 | AI | 67% | |
| | TTI | Oakland | UB | | 7.50% | | 12,000.00 | AP | | |
| | AME, Inc. | Oakland | UB | 7.50% | 7.50% | 12,000.00 | 12,000.00 | AI | 7.50% | |
| | Treadwell & Rollo, Inc. | Oakland | CB | | 18.00% | | 30,000.00 | C | | |
| Project Totals | | | | 74.50% | 100.00% | 122,000.00 | 164,000.00 | | 75% | 0.00% |
| | | | | | | | | Ethnicity AA = African American AI = Asian Indian AP = Asian Pacific C = Caucasian H = Hispanic NA = Native American O = Other NL = Not Listed | | |
| Legend | UB = Uncertified Business CB = Certified Business DBE = Disadvantage Business Enterprise WBE = Women Business Enterprise | | | | | | | | | |

DEPARTMENT OF CONTRACTING AND PURCHASING

Social Equity Division

PROJECT COMPLIANCE EVALUATION FOR :

Professional Services Disadvantaged Business Enterprise (DBE)

PROJECT NO.: CCO2857

PROJECT NAME: RFP for Civil Engineering Design Services for Adeline Street Overhead in Oakland California

CONTRACTOR:

ESI, Inc.

Engineer's Estimate:

N/A

Contractors' Bid Amount

\$164,000

Over/Under Engineer's Estimate

N/A

Discounted Bid Amount:

N/A

Amt. of Bid Discount

N/A

Discount Points:

N/A

1. Did the DBE Program apply? **YES**
 - a) Race Neutral? **YES**
2. Did the contractor meet the DBE goal? **YES**
 - a) % of DBE participation **74.50%**
 - b) % of LBE participation **N/A**
 - c) % of SLBE participation **N/A**
3. Was Good Faith Effort (GFE) Documentation submitted? **N/A**
4. Did the contractor meet the Trucking requirement? **N/A**
 - a) Total DBE trucking participation **N/A**
5. Did the contractor receive bid discounts? **N/A**

(If yes, list the percentage received) **N/A**
6. Additional Comments.
This is a race neutral project DBE participation is not required.
7. Date evaluation completed and returned to Contract Admin./Initiating Dept. **11/8/2007**

Reviewing

Dasco Muñoz

Date:

11/8/2007

Approved By:

General Burns

Date:

11/8/07

DBE Participation Consultant 2

Project Name: RFP for Civil Engineering Design Services for Adeline Street Overhead in Oakland California

| Project No.: CCO2857 | | | | | | | | | | | |
|-----------------------|--------------------------------|---|--------------|--------|---------|-------------|---------------|-----------------------|-------|--------|--|
| Discipline | Prime & Subs | Location | Cert. Status | DBE % | Total % | DBE Dollars | Total Dollars | Certified DBE/WBE | | | |
| | | | | | | | | Ethn. | DBE | WBE | |
| PRIME | Biggs Cardosa Associates, Inc. | Oakland | UB | | 77.00% | | 124,400.00 | C | | | |
| Civil Eng. | HQE, Inc. | Oakland | CB | 20.00% | 20.00% | 30,000.00 | 30,000.00 | C | | 20.00% | |
| Geotechnical | Parikh Consultants | Milpitas | CB | 3.00% | 3.00% | 5,000.00 | 5,000.00 | AI | 3.00% | | |
| Project Totals | | | | 23.00% | 100.00% | 35,000.00 | 159,400.00 | | 3.00% | 20.00% | |
| | | | | | | | | Ethnicity | | | |
| | | | | | | | | AA = African American | | | |
| | | | | | | | | AI = Asian Indian | | | |
| | | | | | | | | AP = Asian Pacific | | | |
| | | | | | | | | C = Caucasian | | | |
| | | | | | | | | H = Hispanic | | | |
| | | | | | | | | NA = Native American | | | |
| | | | | | | | | O = Other | | | |
| | | | | | | | | NL = Not Listed | | | |
| Legend | | UB = Uncertified Business CB = Certified Business DBE = Disadvantage Business Enterprise WBE = Women Business Enterprise | | | | | | | | | |

DEPARTMENT OF CONTRACTING AND PURCHASING

Social Equity Division

PROJECT COMPLIANCE EVALUATION FOR :

Professional Services Disadvantaged Business Enterprise (DBE)

PROJECT NO.: CCO2857

PROJECT NAME: RFP for Civil Engineering Design Services for Adeline Street Overhead in Oakland California

CONTRACTOR: Biggs Cardosa Associates, Inc.

| | | |
|------------------------------------|---------------------------------------|--|
| <u>Engineer's Estimate:</u> | <u>Contractors' Bid Amount</u> | <u>Over/Under Engineer's Estimate</u> |
| N/A | \$159,400 | N/A |

| | | |
|--------------------------------------|------------------------------------|--------------------------------|
| <u>Discounted Bid Amount:</u> | <u>Amt. of Bid Discount</u> | <u>Discount Points:</u> |
| N/A | N/A | N/A |

- | | |
|---|------------------|
| 1. Did the DBE Program apply? | <u>YES</u> |
| a) Race Neutral? | <u>YES</u> |
| 2. Did the contractor meet the DBE goal? | <u>YES</u> |
| a) % of DBE participation | <u>23.00%</u> |
| b) % of LBE participation | <u>N/A</u> |
| c) % of SLBE participation | <u>N/A</u> |
| 3. Was Good Faith Effort (GFE) Documentation submitted? | <u>N/A</u> |
| 4. Did the contractor meet the Trucking requirement? | <u>N/A</u> |
| a) Total DBE trucking participation | <u>N/A</u> |
| 5. Did the contractor receive bid discounts? | <u>N/A</u> |
| (If yes, list the percentage received) | <u>N/A</u> |
| 6. Additional Comments. | |
| <u>This is a race neutral project DBE participation is not required.</u> | |
| 7. Date evaluation completed and returned to Contract Admin./Initiating Dept. | <u>11/8/2007</u> |

Reviewing

Dasco Muñoz

Date:

11/8/2007

Approved By:

Robert Barrer

Date:

11/8/07

DBE Participation Consultant 3

Project Name: RFP for Civil Engineering Design Services for Adeline Street Overhead in Oakland California

| Project No.: | | CCO2857 | | | | | | | | | |
|------------------------------|---|---------------|--------------|--------|---------|-------------|---------------|---|--------|--------|-------|
| Discipline | Prime & Subs | Location | Cert. Status | DBE % | Total % | DBE Dollars | Total Dollars | Certified DBE/WBE | | | |
| | | | | | | | | Ethn. | DBE | WBE | |
| PRIME | Jacobs | Walnut Creek | UB | | 84.00% | | | NL | | | |
| Materials Testing | Applied Material & Engineering, Inc. | Oakland | CB | 1.00% | 1.00% | | | AP | 1.00% | | |
| Construction Cost Estimating | M.Lee Corporation | Walnut Creek | CB | 10.00% | 10.00% | | | AP | 10.00% | | |
| Geotechnical Engineering | Geotechnical Consultants, Inc. | San Francisco | CB | 5.00% | 5.00% | | | AP | 5.00% | | |
| Project Totals | | | | | 16.00% | 100.00% | 0.00 | 0.00 | | 16.00% | 0.00% |
| | | | | | | | | Ethnicity AA = African American AI = Asian Indian AP = Asian Pacific C = Caucasian H = Hispanic NA = Native American O = Other NL = Not Listed | | | |
| Legend | UB = Uncertified Business CB = Certified Business DBE = Disadvantage Business Enterprise WBE = Women Business Enterprise | | | | | | | | | | |

DEPARTMENT OF CONTRACTING AND PURCHASING

Social Equity Division

PROJECT COMPLIANCE EVALUATION FOR :

Professional Services Disadvantaged Business Enterprise (DBE)

PROJECT NO.: CCO2857

PROJECT NAME: RFP for Civil Engineering Design Services for Adeline Street Overhead in Oakland California

CONTRACTOR: Jacobs

| | | |
|------------------------------------|---------------------------------------|--|
| <u>Engineer's Estimate:</u> | <u>Contractors' Bid Amount</u> | <u>Over/Under Engineer's Estimate</u> |
| N/A | \$0 | N/A |

| | | |
|--------------------------------------|------------------------------------|--------------------------------|
| <u>Discounted Bid Amount:</u> | <u>Amt. of Bid Discount</u> | <u>Discount Points:</u> |
| N/A | N/A | N/A |

- | | |
|---|------------------|
| 1. Did the DBE Program apply? | <u>YES</u> |
| a) Race Neutral? | <u>YES</u> |
| 2. Did the contractor meet the DBE goal? | <u>YES</u> |
| a) % of DBE participation | <u>16.00%</u> |
| b) % of LBE participation | <u>N/A</u> |
| c) % of SLBE participation | <u>N/A</u> |
| 3. Was Good Faith Effort (GFE) Documentation submitted? | <u>N/A</u> |
| 4. Did the contractor meet the Trucking requirement? | <u>N/A</u> |
| a) Total DBE trucking participation | <u>N/A</u> |
| 5. Did the contractor receive bid discounts? | <u>N/A</u> |
| (If yes, list the percentage received) | <u>N/A</u> |
| 6. Additional Comments. | |
| <u>This is a race neutral project DBE participation is not required.</u> | |
| 7. Date evaluation completed and returned to Contract Admin./Initiating Dept. | <u>11/8/2007</u> |

Reviewing

Dasco Muñoz

Date:

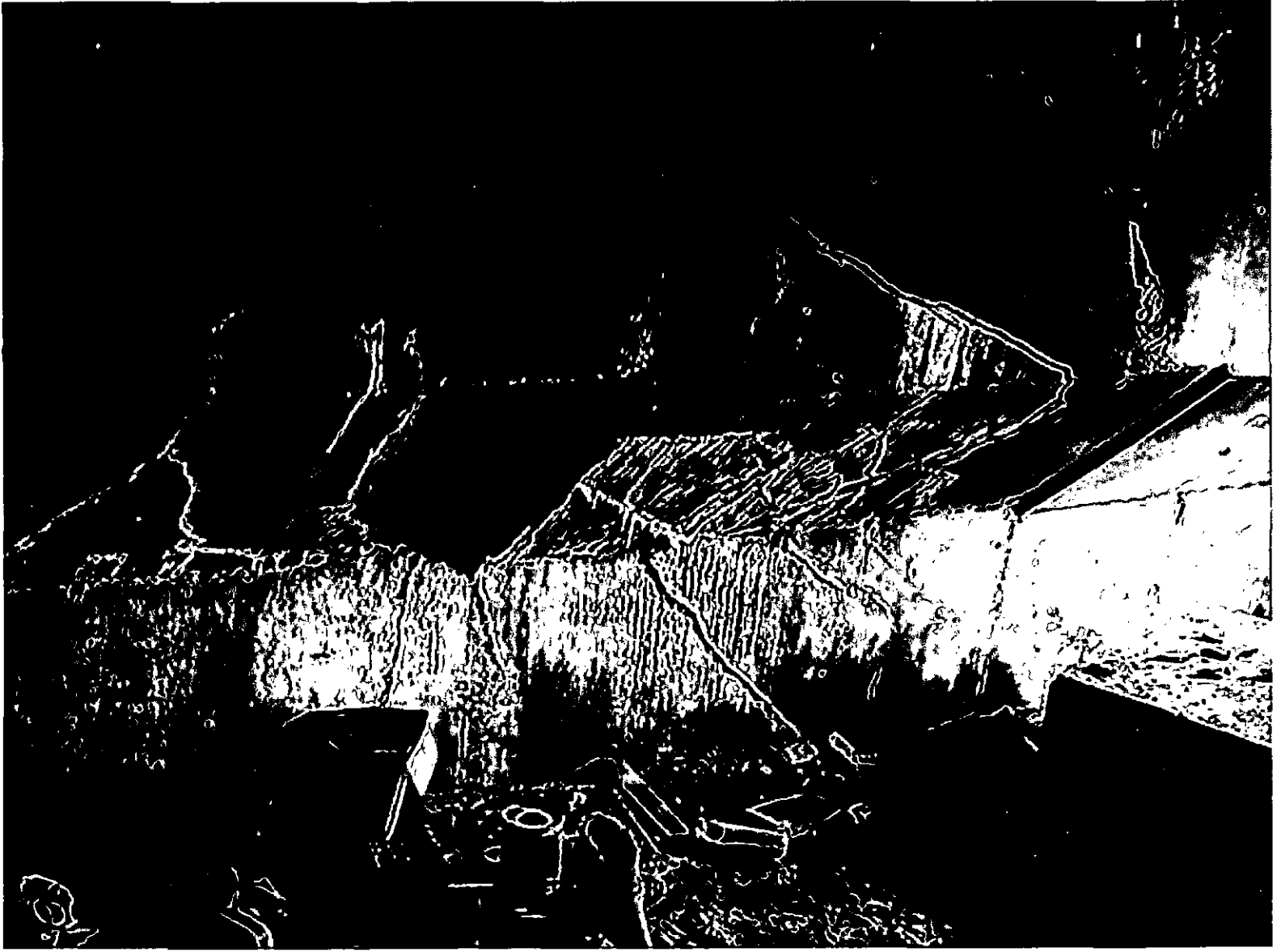
11/8/2007

Approved By:

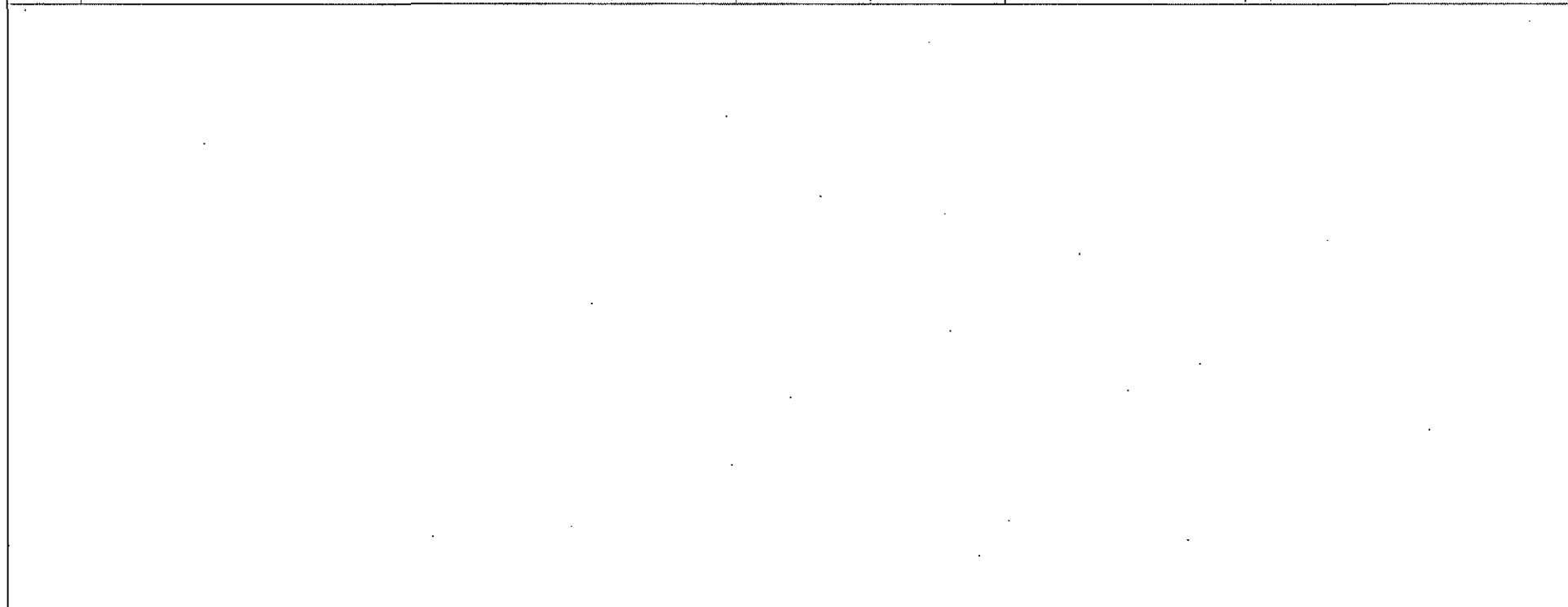
Desrosier Barrera

Date:

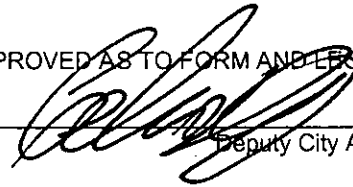




| ID | Task Name | Duration | Start | Finish | 2008 | | | | | | | | | | | | | |
|----|---|-----------------|----------------|-----------------|------|---|---|---|---|---|---|---|---|---|---|---|---|---|
| | | | | | A | M | J | J | A | S | O | N | D | J | F | M | A | M |
| 1 | Adeline Bridge Consult. Selection and Design Phase | 394 days | 4/23/07 | 10/23/08 | | | | | | | | | | | | | | |
| 2 | Prepare RFP & Advertise | 55 days | 4/23/07 | 7/6/07 | | | | | | | | | | | | | | |
| 3 | Consultant Selection Process | 86 days | 7/9/07 | 11/5/07 | | | | | | | | | | | | | | |
| 4 | Award Contract by Council | 52 days | 11/6/07 | 1/16/08 | | | | | | | | | | | | | | |
| 5 | Sign Contract & Provide Documentations | 35 days | 1/17/08 | 3/5/08 | | | | | | | | | | | | | | |
| 6 | Design and Preparation of Construction Document | 166 days | 3/6/08 | 10/23/08 | | | | | | | | | | | | | | |



| | | | | | | |
|--|----------|--|-----------------|--|--------------------|--|
| Project: Project schedule Date: 12/5/07 | Task | | Milestone | | External Tasks | |
| | Split | | Summary | | External Milestone | |
| | Progress | | Project Summary | | Deadline | |



Deputy City Attorney

 OFFICE OF THE CITY CLERK
 OAKLAND

2008 JAN 10 PM 3:33

OAKLAND CITY COUNCIL
RESOLUTION No. _____ C.M.S.

INTRODUCED BY COUNCILMEMBER _____

RESOLUTION AUTHORIZING THE CITY ADMINISTRATOR TO NEGOTIATE AND ENTER INTO A PROFESSIONAL SERVICES AGREEMENT WITH BIGGS CARDOSA ASSOCIATES, INC. TO PROVIDE PROFESSIONAL ENGINEERING SERVICES FOR THE ADELINE STREET BRIDGE REPAIR (PROJECT NO. C319710) FOR AN AMOUNT NOT TO EXCEED TWO-HUNDRED FIFTEEN THOUSAND DOLLARS (\$215,000.00)

WHEREAS, the amount of \$215,000.00 is available in Measure "B" ACTIA Funds (2211), Organization (92242), Account (54411), Project No. C319710, for Adeline Street Bridge Repair professional services; and

WHEREAS, the project consists of investigation and design of repair for the southerly bridge support, design to provide access behind the northerly support, design to replace bridge expansion joints and to seal the bridge, design to repair the spalls and bridge fence and to provide construction support during construction of the project; and

WHEREAS, professional design services are needed to design the project, and extensive outreach effort to request proposals resulted in three responses; and

WHEREAS, Biggs Cardosa Associates, Inc. has submitted a proposal to provide full design services, including preparing plans, specifications and cost estimates, holding meetings, and providing services during bidding and construction phases; and

WHEREAS, Biggs Cardosa Associates, Inc. was chosen through the City's Request for Proposal process as the top rated firm to provide the services; and

WHEREAS, the City Council finds that this contract is for services of a professional nature; and

WHEREAS, the City Council finds that services under contract will be temporary; and

WHEREAS, the City Council finds and determines that the performance of this contract shall not result in the loss of employment or salary by any person having permanent status in the competitive service; now, therefore, be it,

RESOLVED: That the City Council finds and determines that the service is exempt from competitive bidding pursuant to Section 2.04.05011 of the Oakland Municipal Code; and be it

FURTHER RESOLVED: That the City Council hereby authorizes the City Administrator, or her designee, to negotiate and enter into a professional services agreement with Biggs Cardosa Associates, Inc. to provide professional engineering and related design services for the Adeline Street Bridge Repair Project in an amount for basic services of One Hundred Fifty-Nine Thousand Four Hundred Dollars (\$159,400.00); and be it

FURTHER RESOLVED: That the City Administrator, or her designee, is hereby authorized to exceed the amount for basic services for unforeseen contingencies in an amount not to exceed Fifty-Five Thousand Six Hundred Dollars (\$55,600.00); and be it

FURTHER RESOLVED: That the total amount of the Agreement, including an amount for unforeseen contingencies is for a total amount not to exceed Two Hundred Fifteen Thousand Dollars (\$215,000.00); and be it

FURTHER RESOLVED: That the City Administrator, or her designee, is hereby authorized to approve any subsequent amendments to or extensions of said agreement except those involving compensation or the allocation of additional funds provided that such amendments or extensions shall be filed with the City Clerk's Office; and be it

FURTHER RESOLVED: That a copy of the agreement will be on file in the City Clerk's Office and will be approved for form and legality by the Office of the City Attorney.

IN COUNCIL, OAKLAND, CALIFORNIA, _____, 2008

PASSED BY THE FOLLOWING VOTE:

AYES - BROOKS, BRUNNER, CHANG, KERNIGHAN, NADEL, QUAN, REID, AND PRESIDENT DE LA FUENTE

NOES-

ABSENT-

ABSTENTION-

ATTEST:: _____
LaTonda Simmons
City Clerk and Clerk of the Council
of the City of Oakland, California