



Janiele Maffei  
Chief Mitigation Officer  
California Earthquake Authority

**A program of the California Residential Mitigation Program**

# California Residential Mitigation Program (CRMP)

- Joint Powers Authority
  - California Earthquake Authority (CEA)
  - Governor's Office of Emergency Services (Cal OES)



# How CRMP Operates

- Funding
  - CEA contributes 5% of investment income to fund mitigation efforts
- CRMP Board of Directors
  - Two CEA appointments
  - Two Cal OES appointments
- Executive Director



Photo credit: FEMA



# Earthquake Brace + Bolt: Funds to Strengthen Your Foundation

- CRMP's First Incentive Program
- Reimburse Up to \$3,000
- Qualifying EBB Houses
  - In program ZIP codes
  - Constructed pre-1979
  - Low-slope sites
  - Need anchor bolts and cripple wall sheathing



# Earthquake Brace + Bolt (EBB)

- January 2015
  - Coming to six cities and 26 ZIP codes
  - 575 residential retrofits planned
- Oakland ZIP Codes
  - 94609
  - 94618
  - 94610
  - 94602
  - 94607



# EBB Program Timeline

- Homeowner Registration
  - January 15 through February 15
  - Register online
- Email Notification to Begin Program
  - March 2
- Get Permit and Upload on EBB
  - March 2 through April 2
- Complete Retrofit
  - Six months (through September 31)



# IS YOUR HOME EARTHQUAKE READY?

You may qualify for up to \$3000 towards a seismic retrofit of your home!

**REGISTER NOW**



HOMEOWNERS



CONTRACTORS

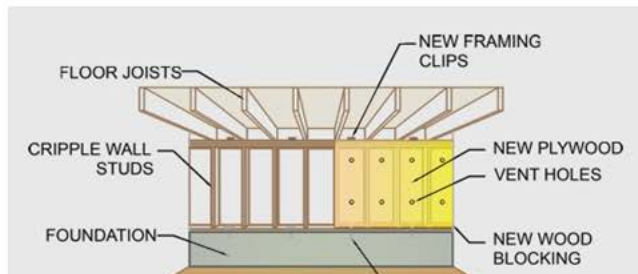


BUILDING OFFICIALS



EDUCATION

## Is your home earthquake ready?



If an earthquake happened today, would your house stay on its foundation? Would the cripple walls collapse? Would your water heater topple over? What would you be willing to do to strengthen your house from earthquake damage?



Find out how a retrofit is completed by watching this video.

The CRMP seismic incentive program offers up to \$3000 to homeowners to cover



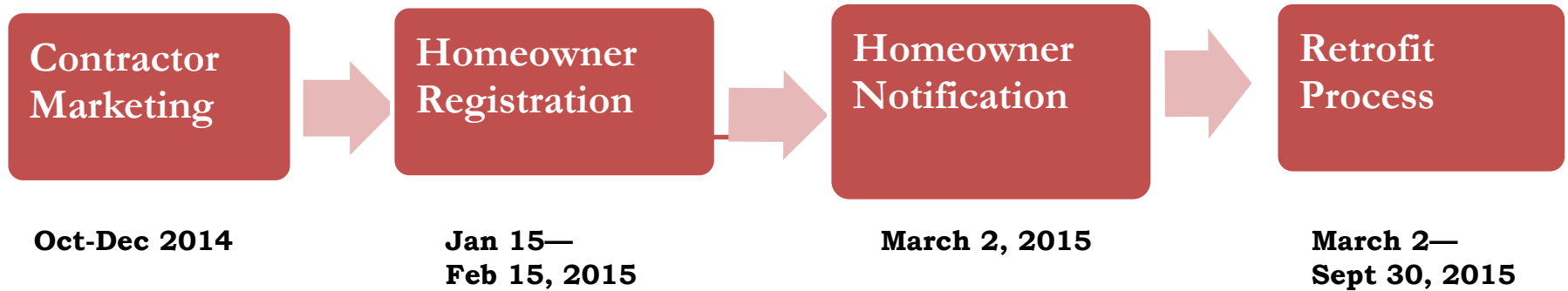
# Website Information

- Animation showing the retrofit process
- How to determine if your house qualifies
- How to choose a contractor
- What documentation is required
- Listing of contractors who have completed FEMA's seismic retrofit training

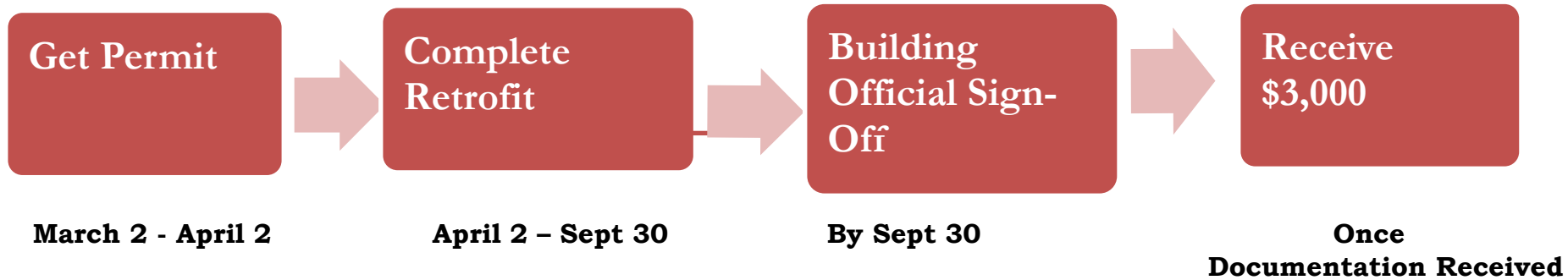




# EBB Program Cycle: First Expansion Group



# Retrofit Process





EarthquakeBraceBolt.com

**A program of the California Residential Mitigation Program**