

FILED
OFFICE OF THE CITY CLERK
OAKLAND

2008 SEP -4 PM 2:05 OF OAKLAND



ONE FRANK OGAWA PLAZA • 2ND FLOOR • OAKLAND, CALIFORNIA 94612

Jean Quan
City Council Member, District 4

jquan@oaklandnet.com
www.jeanquan.org

(510) 238-7004
FAX:(510) 238-6129
TTY/TDD:(510) 839-6451

September 16, 2008

Oakland City Council
Oakland, California

President De La Fuente and Members of the City Council:

RE: Resolution Authorizing The City Administrator Or Designee To Enter Into Donation Agreements And Accept And Appropriate Donations For Improvements To The Shepherd Canyon Park Parking Lot As Follows: \$30,000.00 From The Montclair Soccer Club, \$6,732.00 From The Friends Of Oakland Parks & Recreation, And \$5,000.00 From The Montclair Safety & Improvement Council

A resolution has been prepared authorizing the City Administrator, or designee, to accept donations from the Montclair Soccer Club (\$30,000), the Friends of Oakland Parks & Recreation (\$6,732) and the Montclair Safety & Improvement Council (\$5,000) and to appropriate the donations to the Shepherd Canyon Parking Lot Project ("Project").

The Community Economic and Development Agency has prepared a separate report and resolution that recommends the City dispense with the advertising requirement for the Project and award a construction contract to the lowest responsive bidder for the Project (B246741) in an amount not-to-exceed \$110,000.

Due to the City's moratorium on excavation and grading near creeks during the rainy season, which begins October 15, 2008, the Project, which is anticipated take 20 days, must begin work as soon as possible in order to be completed this fall.

Item: _____
ORA / City Council
September 16, 2008

FISCAL IMPACT

The \$146,000 Project is fully funded as follows:

- \$104,268 in Pay-Go from Council Members Jean Quan and Henry Chang
- \$30,000 donated by the Montclair Soccer Club
- \$6,732 donated by the Friends of Oakland Parks & Recreation
- \$5,000 donated by the Montclair Safety & Improvement Council

BACKGROUND

Shepherd Canyon Park, located in District 4 along Shepherd Canyon Road, is actively used for soccer and lacrosse throughout the year. Currently, there is a small gravel parking lot that accommodates approximately 10 vehicles. The organized soccer practices and other games generate a need for increased parking due to their intensive use during the year, especially during the fall soccer season where up to 70 or more vehicles converge on Shepherd Canyon Road to bring children and family to soccer practice and games. With only the small parking lot, drivers tend to park along the side of the narrow, winding road. Parents and neighbors have long expressed their desire to significantly improve parking at this park.

In May 2003, Council Member Jean Quan convened a Shepherd Canyon Open Space Tasks Force and, in cooperation with the Shepherd Canyon Homeowners Association, held two community workshops in September and October of 2003, during which additional parking was identified as a critical and necessary park improvement. Over the next four years, City engineering staff worked with the Shepherd Canyon Open Space Task Force to design additional off-street parking. The goal was to provide as much off-street parking as possible, without compromising the nearby creek. Several trees in the area were removed by the Wildfire Prevention District in anticipation of this project.

The final design creates 29 parking spaces, including 2 handicapped parking spaces, in an area extending east from the current parking lot (Attachment A). A wooden fence and 5 redwood trees will be installed to provide a visual barrier between the parking lot and Shepherd Canyon Road. Traffic would circulate around the parking lot, with only one access point for ingress / egress.

City Engineers estimate that actual construction of the parking lot will cost \$110,000. Total cost of the project is anticipated to be \$146,000.

KEY ISSUES AND IMPACTS

Minimal Impact on Shepherd Creek

In order to avoid contamination of the creek and to comply with the rustic nature of the park, crushed aggregate, stabilized with geo-web (a plastic honeycomb stabilizing system) will be used for the parking lot surface, except for the two handicapped parking spaces, which will be asphalt.

Timing of Construction

During the fall soccer season, between August and November, the Shepherd Canyon Park field is used for soccer practice daily between 4:00 and 6:00 p.m. and for games on Saturday and Sunday from 8:00 a.m. until 3:00 p.m. Alternative parking arrangements during construction have been identified and parents will be directed to use the alternative site on Escher Road (at the Escher entrance to the park) whenever the parking lot is full. Completing construction as quickly as possible is critical and is a condition of the \$30,000 donation from the Montclair Soccer Club.

Another challenge is to complete the project prior to the City's annual moratorium on excavation and grading, typically running from October 15 through April 15 each year. City engineers anticipate that construction will take between 14 to 20 days. In order to complete construction before the October 15, 2008 rainy season moratorium, City staff requests that advertising be waived and direct solicitation to properly licensed, qualified contractors be authorized. Three hundred (300) notices inviting bids were mailed to contractors (including truckers) and outreach groups (Builder Exchange Organizations). In order to expedite the contract, the notice was not advertised in the newspaper. The bid submission date was Monday, August 25, 2008. Bid results and the identity of the successful contractor should be available by the time this item is presented to Council.

Separate Account for Montclair Soccer Club Donation

As a condition of the donation, the Montclair Soccer Club (MSC) requires that the City deposit their donation into an account separate from the City project account. MSC wishes to release payments toward the Project construction in 3 phases - at contract execution, at 50% completion and at full completion. The City and MSC will enter into a donation agreement with these terms and conditions. Other donors have provided funds for direct deposit into the City's Project account.

ACTION REQUESTED OF THE CITY COUNCIL

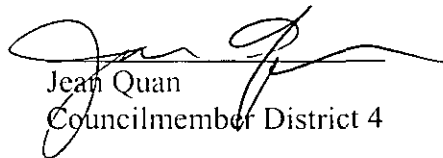
Council Member Quan requests that the City Council approve the resolution authorizing the City Administrator, or designee, to accept and appropriate donations for

Item: _____
ORA / City Council
September 16, 2008

improvements to the Shepherd Canyon Park parking lot as follows: a donation of \$30,000 from the Montclair Soccer Club, a donation of \$6,732 from the Friends of Oakland Parks & Recreation, a donation of \$5,000 from the Montclair Safety & Improvement Council.

Council Member Quan also requests the City Council join her in offering sincere thanks and appreciation to the donor organizations for their generosity to the City

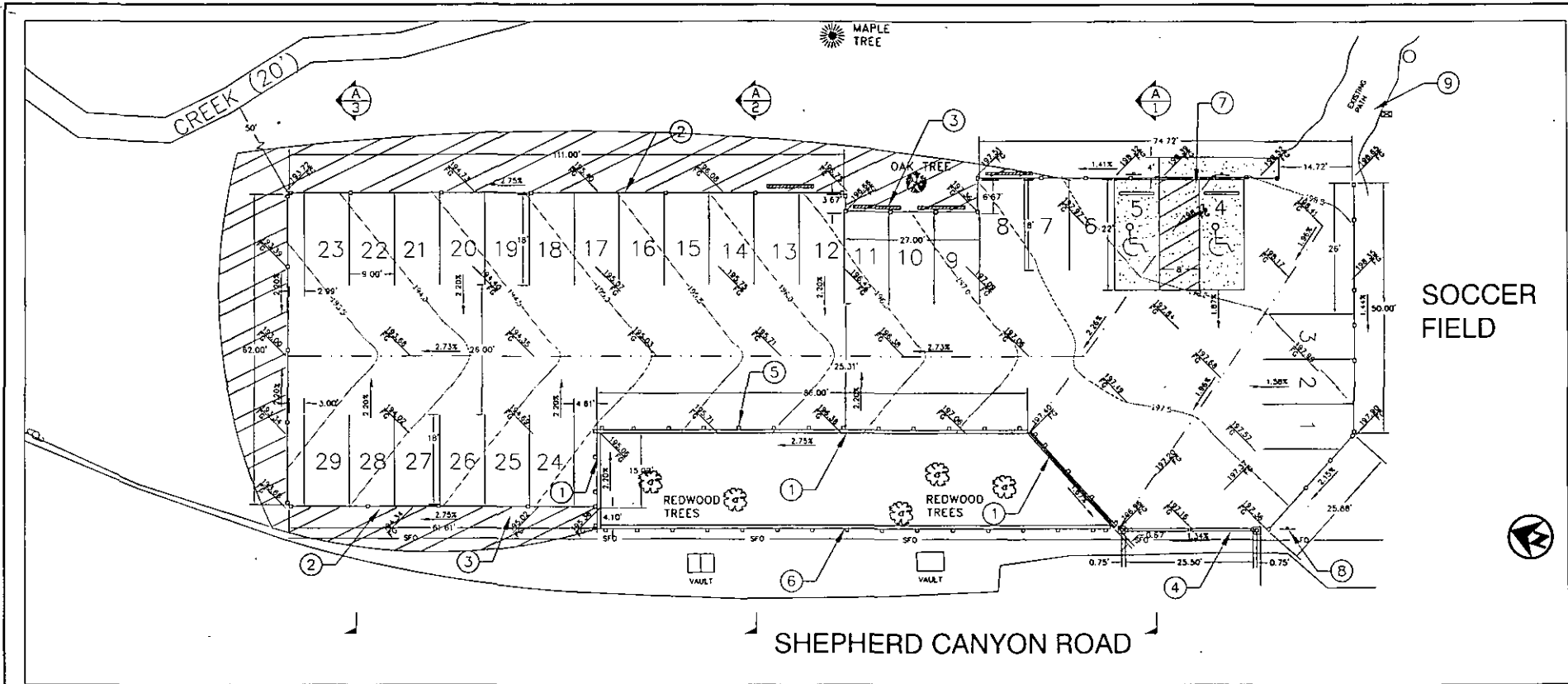
Respectfully submitted,



Jean Quan
Councilmember District 4

Prepared by: Sue Piper
Policy Analyst, District 4

Attachment A: Parking Lot Schematic



- LEGENDS:**
- WROUGHT IRON CHAIN AND POST FENCING
 - 2'-8" PRESSURE TREATED WOOD RETAINING WALL
 - SALVAGED LUMBER FROM LOT A
 - GRADE BREAK

- CONSTRUCTION NOTES:**
- ① CONSTRUCT WOOD RETAINING WALL (SEE SHEET 4)
 - ② CONSTRUCT CHINA AND POST PARAMETER FENCING (SEE SHEET 4)
 - ③ SALVAGE EXISTING LUMBER IN LOT A AND REUSE AT LOCATIONS SHOWN OR AS DIRECTED BY THE ENGINEER.
 - ④ ENTRANCE GATE AND POST
 - ⑤ INSTALL RED WARNING REFLECTOR ON RETAINING WALL POST (SEE SHEET 4)
 - ⑥ EXISTING WOOD RETAINING WALL TO REMAIN

- ⑦ CONSTRUCT TWO ASPHALT DISABLED PARKING SPACES WITH ASPHALT PATHWAY AS SHOWN. DISABLED PARKING ONES SHALL COMPLY WITH ALL APPLICABLE ADA/BC REQUIREMENTS, INCLUDING SLOPE, CROSS-SLOPE, GROUND, GROUND SYMBOLS AND ACCESS AISLE STRIPING. DISABLED PARKING SPACES PATHWAY SHALL BE 2" AC ON 4" AG.
- ⑧ INSTALL DISABLED PARKING SPACES SIGN AT PARKING LOT ENTRANCE
- ⑨ CONTRACTOR SHALL RESTORE EXISTING WALKING PATH TO IT'S ORIGINAL CONDITION WITH A MAXIMUM CROSS SLOPE OF 2% AND CONFORM GRADE TO PROPOSED AC PATH.

- NOTES:**
1. CONTRACTOR TO PROVIDE A FLAGMAN DIRECTING TRAFFIC ON SHEPHERD CANYON ROAD DURING ENTRANCE AND EXIT OF TRUCKS AND CONSTRUCTION EQUIPMENT INTO THE SITE.
 2. CONTRACTOR SHALL ALL NECESSARY TRAFFIC AND CONSTRUCTION WARNING SIGNS ALONG SHEPHERD CANYON ROAD AS PER "WATCH" BOOK.
 3. CONTRACTOR SHALL PROVIDE SIGNAGE AND DIRECTION NEAR THE ENTRANCE OF THE EXISTING LOT TO THE TEMPORARY PARKING LOT ON ESCHER DRIVE FOR THE DURATION OF THE PROJECT.

CITY OF OAKLAND
 DESIGN AND CONSTRUCTION SERVICES DEPARTMENT
 250 FRANK H. OAKLAND PLAZA SUITE 1214 • OAKLAND CA 94612
 (510) 236-5437 • FAX: (510) 236-1227

**SHEPHERD CANYON SOCCER
 FIELD PARKING LOT**



CIVIL ENGINEER	No.	DATE	BY	REFERENCE
PROJECT NO. C44827 EXP. 12/31/06				
CHECKED BY: MBARATI				
DESIGNED BY: MBARATI/SKONG				
DRAWN BY: BNDJG				

**PROPOSED
 PARKING LOT**

PROJECT NO.
B246740

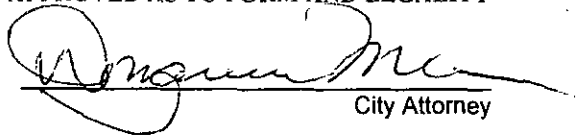
SCALE: AS SHOWN
 HOR. VERT.
 DATE: AUG 2008
 SHEET NO.
 4 of 6

ATTACHMENT 1

FILED
OFFICE OF THE CITY CLERK
OAKLAND

2008 SEP -4 PM 2:05

APPROVED AS TO FORM AND LEGALITY


City Attorney

OAKLAND CITY COUNCIL

RESOLUTION No. _____ C.M.S.

RESOLUTION AUTHORIZING THE CITY ADMINISTRATOR OR DESIGNEE TO ACCEPT AND APPROPRIATE DONATIONS AND OTHER FUNDS FOR IMPROVEMENTS TO THE SHEPHERD CANYON PARK PARKING LOT AS FOLLOWS: A DONATION OF \$30,000.00 FROM THE MONTCLAIR SOCCER CLUB, A DONATION OF \$6,732.00 FROM THE FRIENDS OF OAKLAND PARKS & RECREATION, A DONATION OF \$5,000.00 FROM THE MONTCLAIR SAFETY & IMPROVEMENT COUNCIL

WHEREAS, the City of Oakland is committed to the health and public safety of its residents; and

WHEREAS, use of Shepherd Canyon Park as a soccer and lacrosse field encourages Oakland's children and teens to develop life-long habits of exercise and sportsmanship; and

WHEREAS, during the fall soccer season, between August and November, the Shepherd Canyon Park field is used for practice daily between 4 and 6 pm, and for games on Saturday and Sunday from 8 am until 3 pm; and

WHEREAS, the organized soccer practices and games generate a need for increased parking due to their intensive use during the year, especially during the fall soccer season where up to 70 or more cars at a time converge on narrow Shepherd Canyon Road to bring children and family to soccer practice and games; and

WHEREAS, the expansion of parking was a top priority emanating from a community planning process for Shepherd Canyon Park in 2003 and the City wishes to construct improvements to the Shepherd Canyon Parking Lot ("Project"); and

WHEREAS, the Montclair Soccer Club has agreed to donate \$30,000.00 for the Project to be deposited in a separate account which shall be addressed in a donation agreement between the City of Oakland and the Montclair Soccer Club; and

WHEREAS, additional donations have been pledged to the Project from the Friends of Oakland Parks & Recreation - \$6,732.00, and the Montclair Safety & Improvement Council - \$5,000.00; and

WHEREAS, the full cost of the Project, including construction, administration of the contract and contingencies, is \$146,000.00, and there will be sufficient funds to cover the Project from pay go contributions from Councilmembers Jean Quan and Henry Chang which total \$104,268 and the above-referenced donations which total \$41,732.00; and

WHEREAS, the Community and Economic Development Agency shall submit a separate report and resolution for the project work; now, therefore, be it

RESOLVED: That the City Council hereby authorizes the City Administrator or designee to enter into a donation agreement with the Montclair Soccer Club for a donation in the amount of \$30,000.00 for the Shepherd Canyon Park Parking Lot Project ("Project"); and

FURTHER RESOLVED, That the City Council hereby authorizes the City Administrator or designee to enter into a donation agreement with the with the Montclair Safety & Improvement Council for a donation in the amount of \$5,000.00 for the Project; and be it

FURTHER RESOLVED, That the City Council hereby authorizes the City Administrator or designee enter into a donation agreement with the Friends of Oakland Parks & Recreation for a donation in the amount of \$6,732.00 for the Project; and be it

FURTHER RESOLVED: That the above-referenced donated funds are accepted and appropriated to 1.2211.88342.56611.B246741 for the Shepherd Canyon Park Parking Lot Project; and be it

FURTHER RESOLVED: That the agreements authorized herein shall be approved for form and legality by the City Attorney and placed on file in the Office of the City Clerk.

IN COUNCIL, OAKLAND, CALIFORNIA, _____, 2008

PASSED BY THE FOLLOWING VOTE:

AYES - BROOKS, BRUNNER, CHANG, KERNIGHAN, NADEL, QUAN, REID, and
PRESIDENT DE LA FUENTE

NOES -

ABSENT -

ABSTENTION -

ATTEST: _____
LaTonda Simmons
City Clerk and Clerk of the Council
of the City of Oakland, California

Date: _____