

# Plan|ACT

Routes and Schedules

Service Expansion Plan (SEP)  
City of Oakland  
November 3, 2015

# Budget - Alameda County

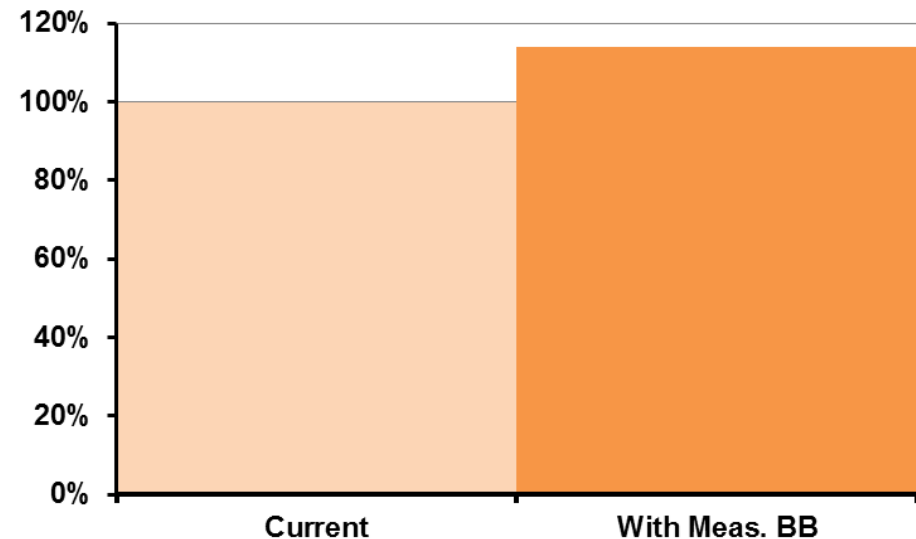
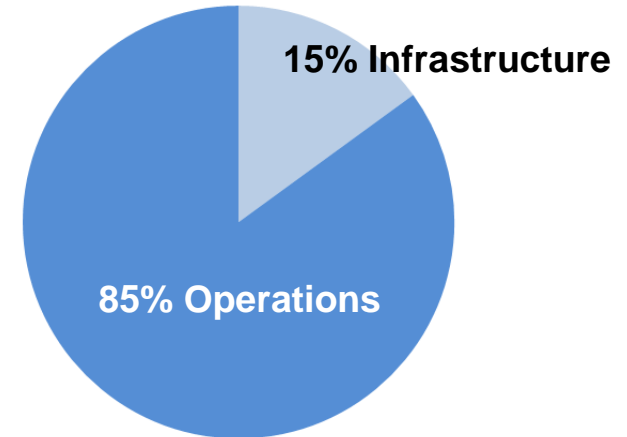
## Measure BB

### 15% Infrastructure

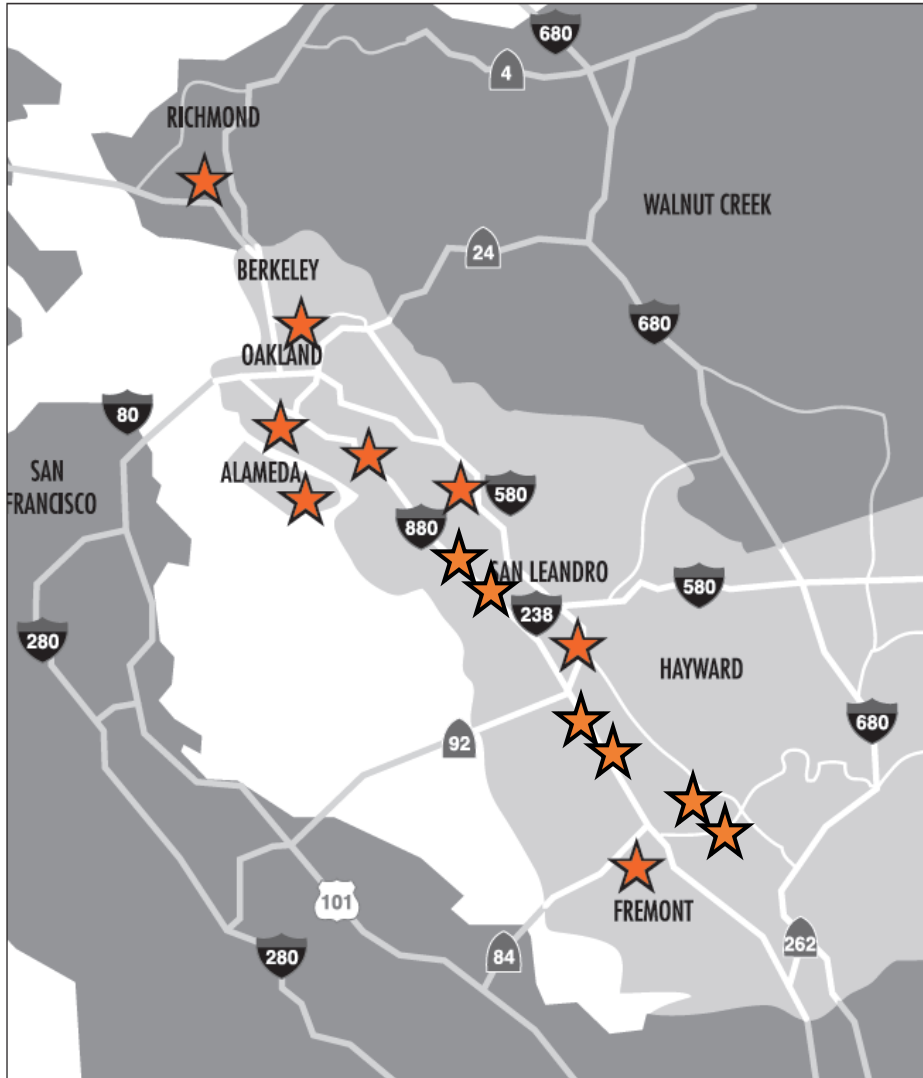
- Capital projects
- State-of-good-repair

### 85% Operations

- Up to \$24 million/year
- 14% more service
- 2009 service levels



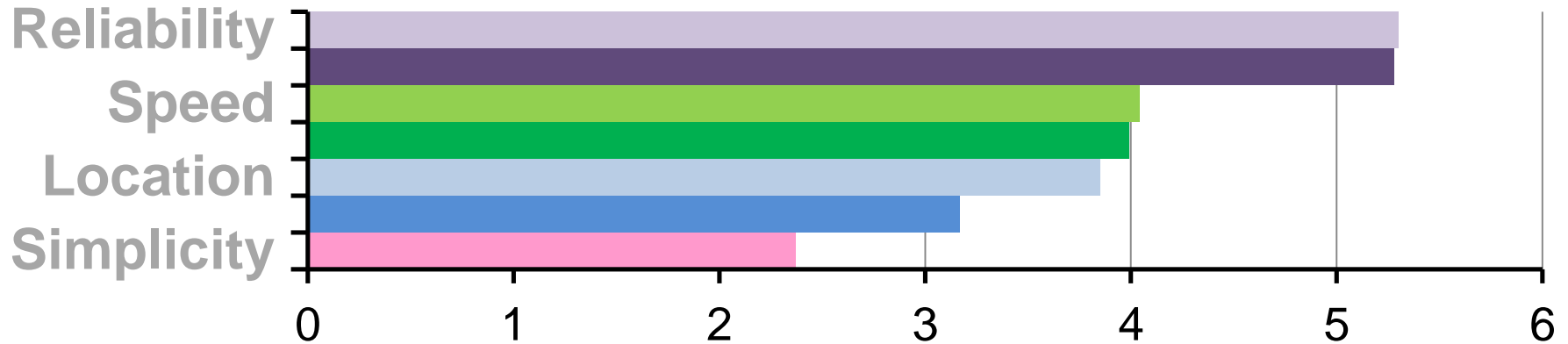
# Public Involvement



- Surveys distributed at focus groups
- Small group exercises and brainstorming
- AC Transit developed route proposals based on surveys results and discussion
- Feedback on proposals solicited online and at meetings with community-based organizations
- Planners reviewed comments for each new proposal and modified accordingly
- Final proposals presented to City Councils and Board of Directors
- Public hearing November 11, 2015

# Survey Results

## What do you value most about transit?



# Survey Results

## Existing



## Goals

### Fill in the grid.

- Increasing frequency, especially midday, evenings, and weekends

### Get you where you're going.

- Extend lines to major destinations

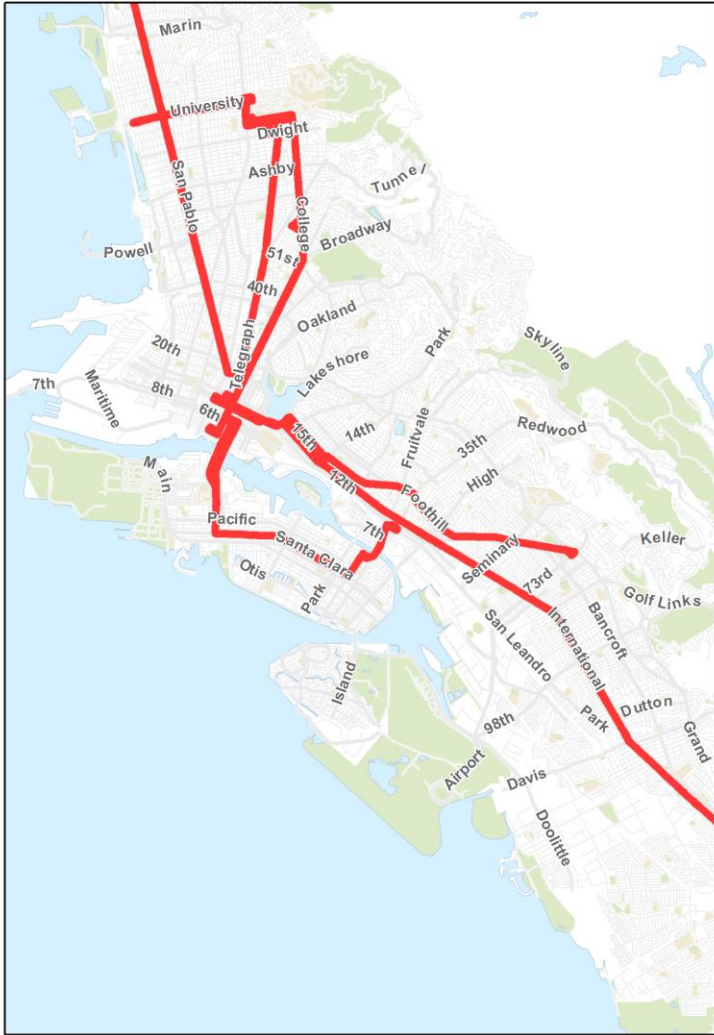
### Improve performance.

- Adjust routes to reduce delay
- Maximize resources like Road Supervision and restroom facilities by terminating in common locations

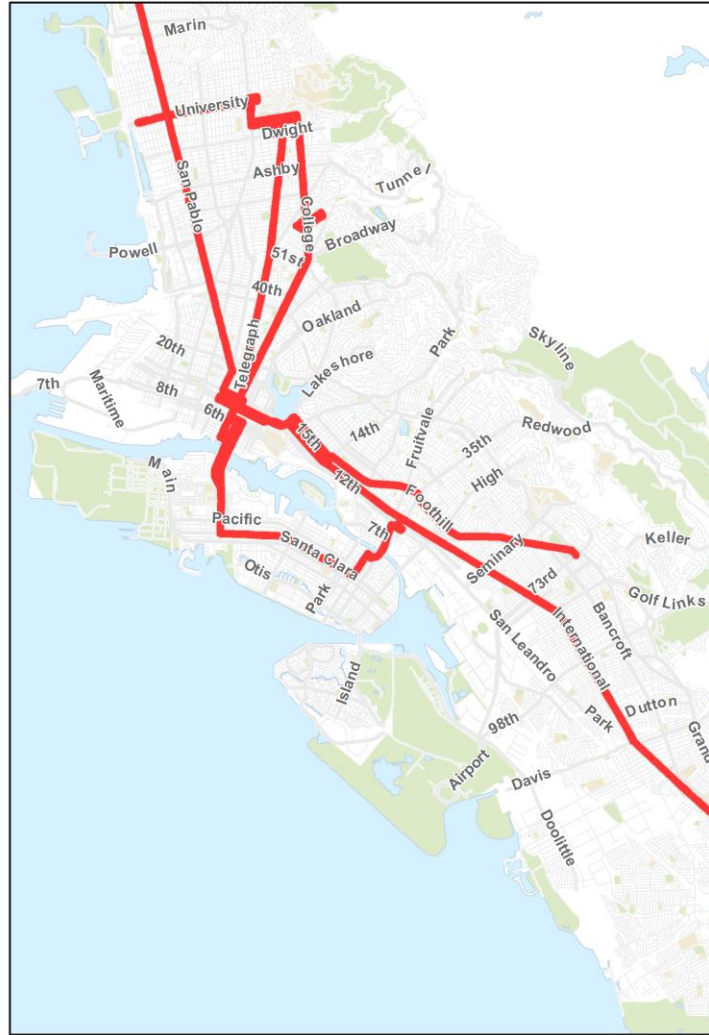
# OVERVIEW OF NETWORK IMPROVEMENTS

# Frequency

Existing



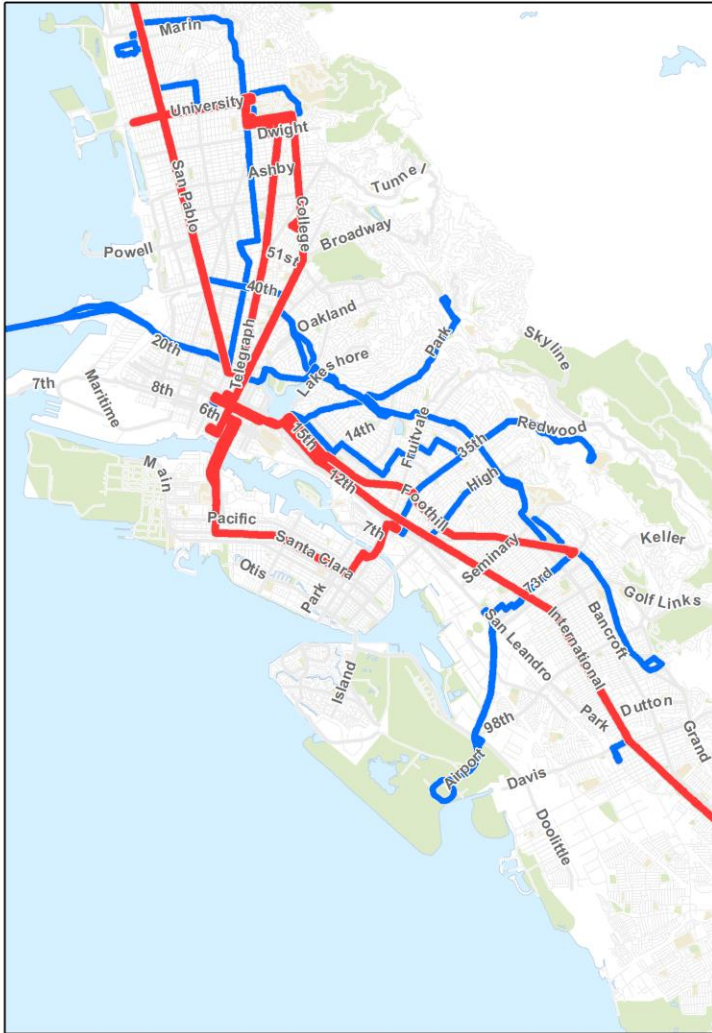
Proposed



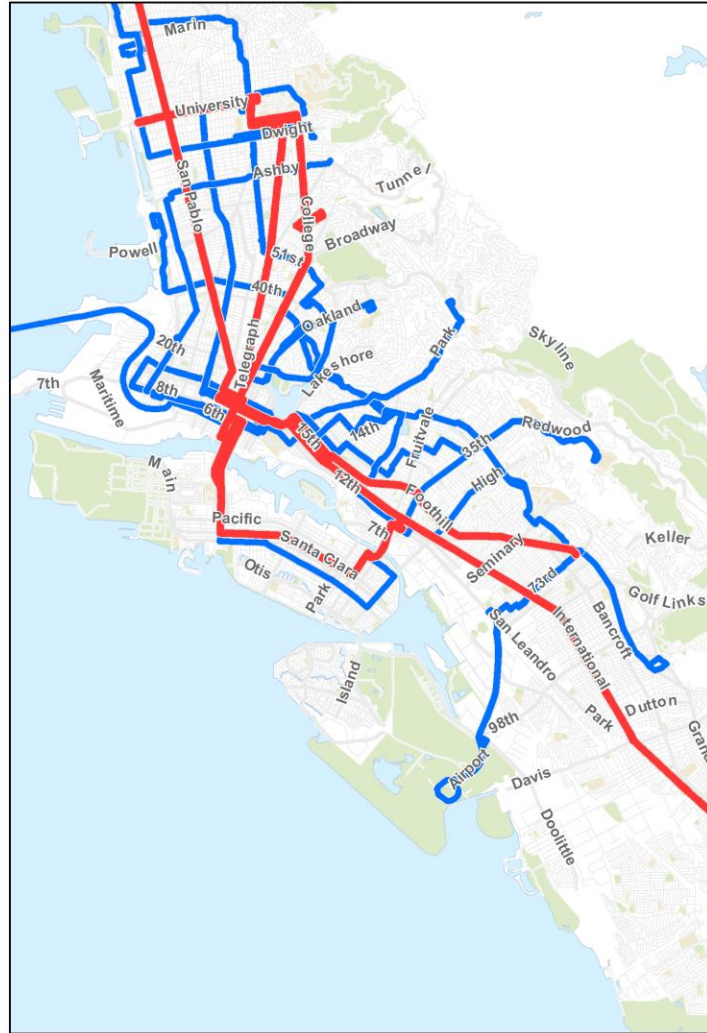
**Bus every...**  
**10 – 12 min**

# Frequency

Existing



Proposed



**Bus every...**  
**10 – 12 min**  
**15 min**

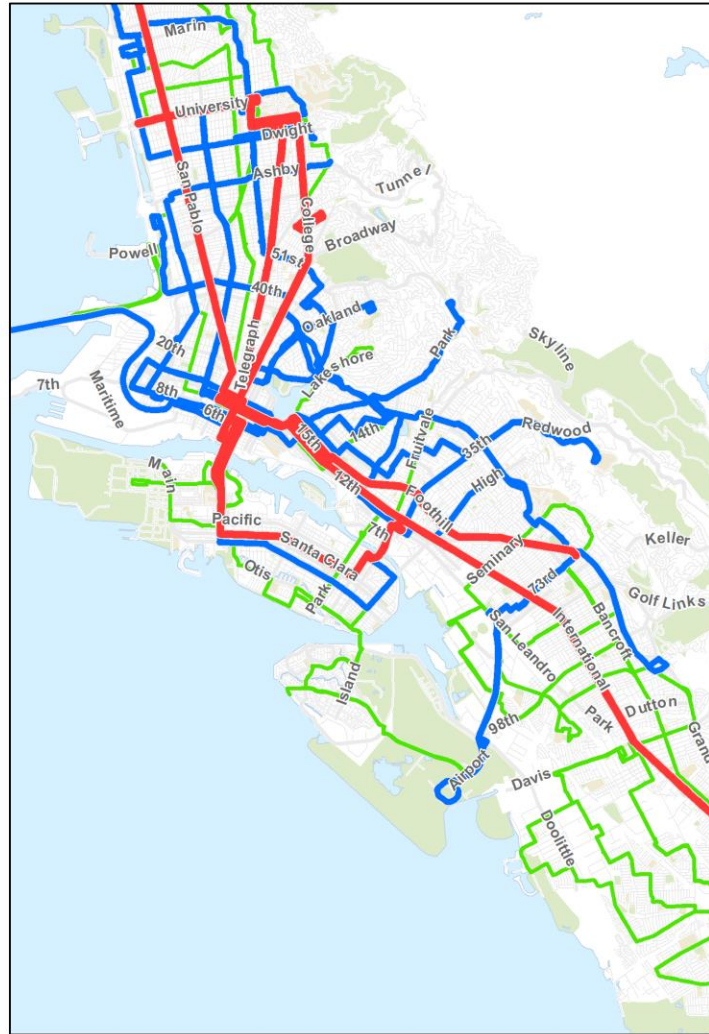


# Frequency

Existing



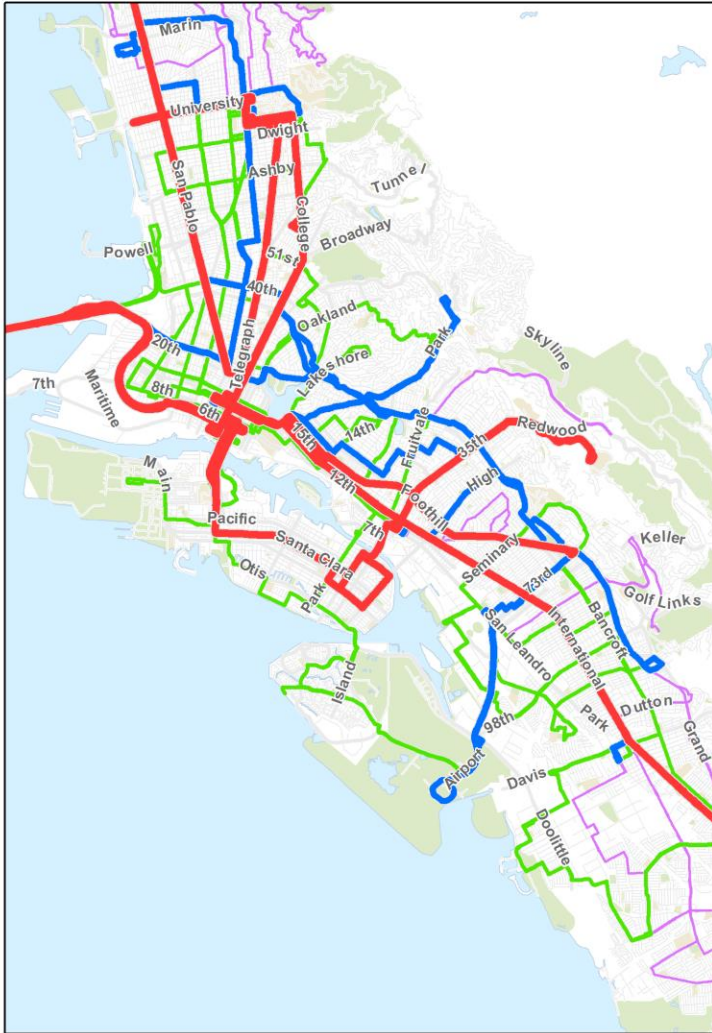
Proposed



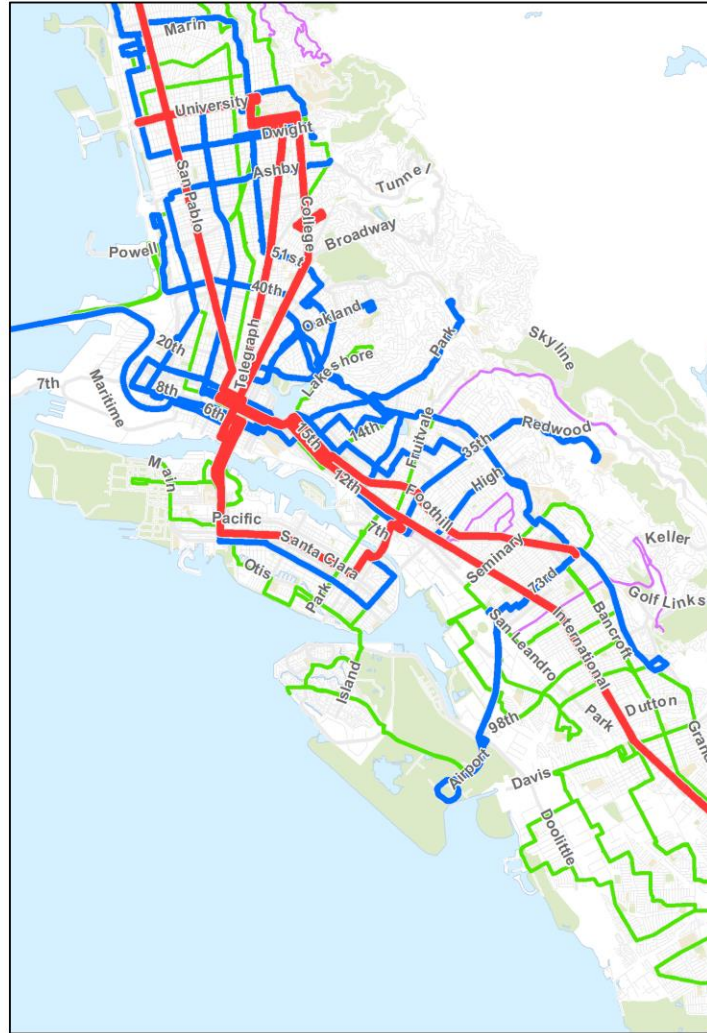
**Bus every...**  
**10 – 12 min**  
**15 min**  
**20 – 30 min**

# Frequency

## Existing



## Proposed

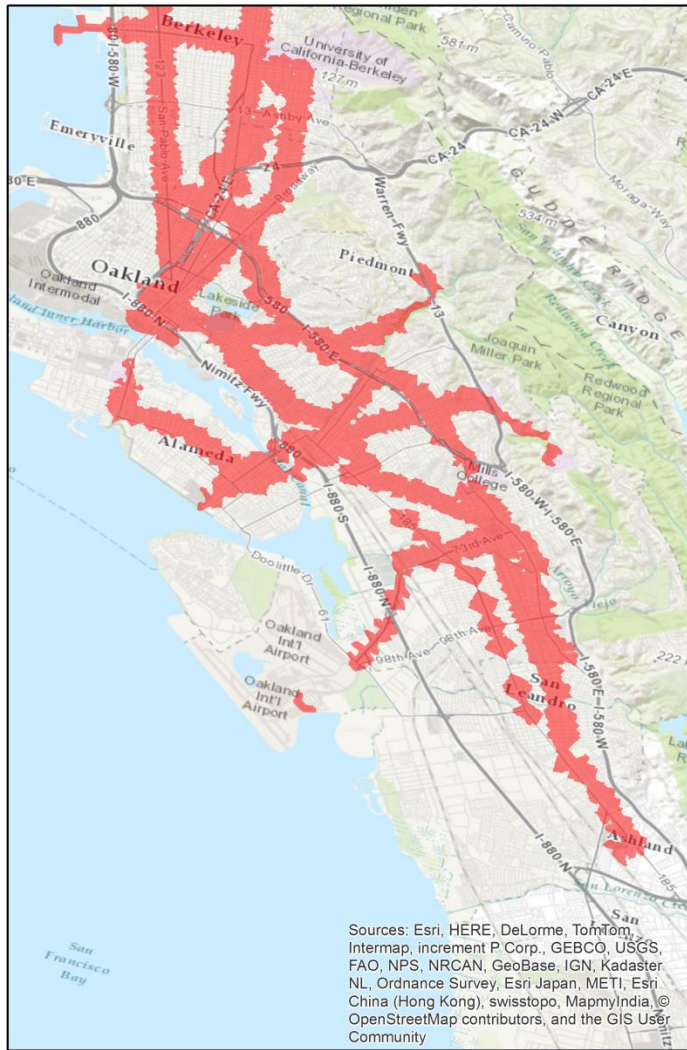


**Bus every...**  
**10 – 12 min**  
**15 min**  
**20 – 30 min**  
**40 – 60 min**

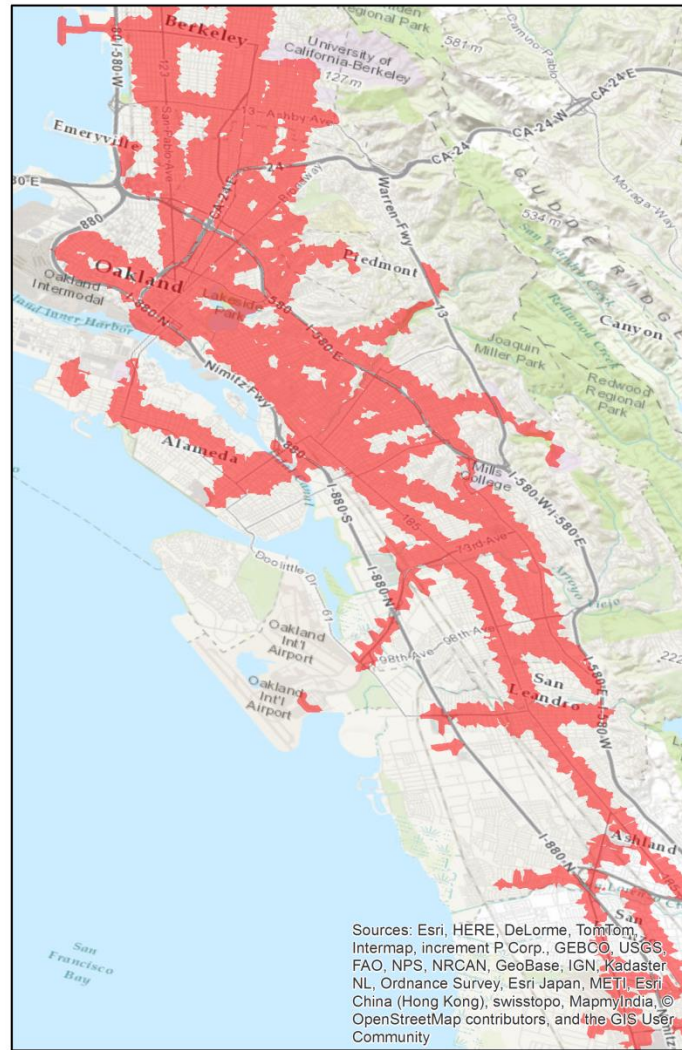
S:\Research\GIS\GIS Projects\COA Outreach 2014\4 - Round 2 Outreach\3 - MXD Maps\Before-After Route Comparisons.mxd

# Accessibility

## Existing



## Proposed



**+ 16% More Jobs**  
**+ 35% More Residents**  
**Near Frequent Service\***

Within ¼ mile of a bus  
Every 15-minutes, or better  
16 – 20 hours/day

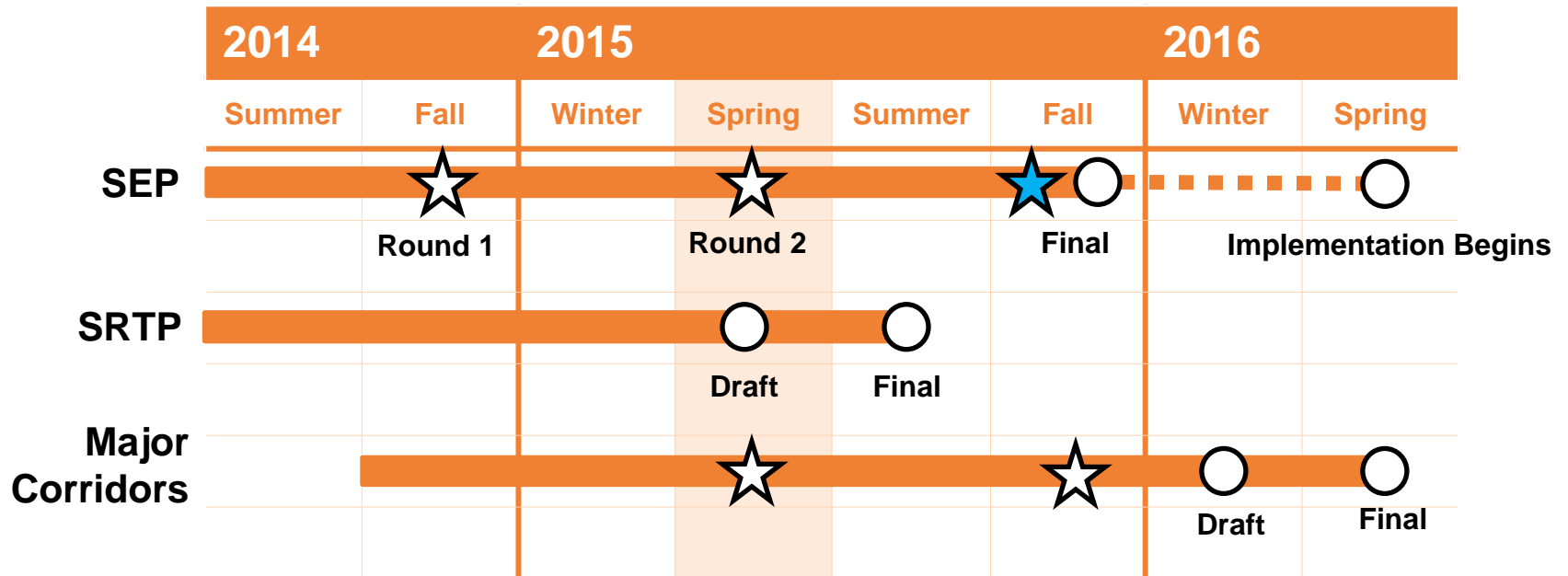
# Next Steps

- **Finalize implementation Plan** by December 2015
  - SEP Requirements
    - 30-40 buses
    - Maintenance and Yard Capacity
    - 160 operators
  - Operational Capacity Considerations
  - Financial Outlook – Service-related Capital Contribution and Long-term Financial Projections
- **California Environmental Quality Act (CEQA)** Analysis by October 2015
- **Title VI** Analysis by November or December 2015

# Next Steps

- **9/16/15** – Set the Public Hearing for 11/11/15
- **September - October 2015** – Conduct Public Outreach for Public Hearing
- **10/14/15** – Presentation of SEP Recommendations at Board Meeting
- **10/28/15** – Cont'd Presentation of SEP Recommendations at Board Meeting
- **11/11/15** – Hold Public Hearing
- **11/11/15 – 12/9/15** – Consider Public Comments Received
- **12/9/15** – Anticipated Board Decision on the SEP and Implementation Plan
- **March 2016 – March 2017** – Implementation of SEP

# Timeline



- ☆ Public Outreach Meetings
- Major Milestones

[www.actransit.org/sep](http://www.actransit.org/sep)

Thank you