

# AGENDA REPORT

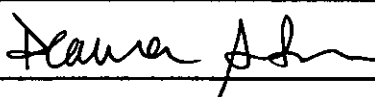
**TO:** DEANNA J. SANTANA  
 CITY ADMINISTRATOR

**FROM:** Brooke A. Levin  
 Interim Director, PWA

**SUBJECT:** Sanitary Sewer Pump Station  
 Improvements

**DATE:** October 23, 2013

---

City Administrator Approval  Date 11-19-13

---

COUNCIL DISTRICT: 2,4,6,7

**RECOMMENDATION**

Staff recommends that the City Council approve a resolution authorizing the City Administrator or her designee to enter into a professional services agreement with Schaaf & Wheeler Consulting Civil Engineers for Engineering Services for Oakland’s Sanitary Sewer Pump Station Improvements (project no. C267630) in an amount not-to-exceed Four Hundred Fifty Thousand Dollars (\$450,000.00)

**OUTCOME**

Approval of the resolution will authorize the City Administrator or her designee to execute a professional service contract with Schaaf & Wheeler Consulting Civil Engineers for an amount not to exceed \$450,000.00 for Sanitary Sewer Pump Station Improvements. The work is located in Council Districts 2, 4, 6, and 7. The six (6) pump stations that need improvement are:

Pump Station Name	Pump Station Location
Hegenberger	201 Hegenberger near San Leandro Creek Bridge
Shepherd Canyon	5921 Shepherd Canyon Road near the soccer field
Parkridge	5195 Parkridge Drive
Skyline	Skyline Boulevard at Parkridge Drive
Fallon St (Laney)	900 Fallen Street between 8 <sup>th</sup> Street and 9 <sup>th</sup> Street (Laney Pump Station)
Denton	5610 Denton Place

## **BACKGROUND/LEGISLATIVE HISTORY**

In accordance with several regulatory requirements, Oakland is required to upgrade the existing six (6) sanitary sewer pump stations. The improvements will entail ensuring adequate capacity for peak wet weather related flows, providing an automatic alarm system and backup or redundant equipment, and upgrading mechanical and electrical components.

### ***Selection Process***

On August 1, 2013, the City received proposals from four consultants; BKF Engineers, Aliquot Associates, MGE Engineering, and Schaaf & Wheeler Consulting Civil Engineers (See ***Attachment A*** for Compliance Report). Staff reviewed the proposals and invited all four firms for presentation and interview. The firms were evaluated based on the following criteria:

- Approach – Methodology and understanding of issues
- Experience – Team – Knowledge and experience of the project team
- Team – Depth and breadth of the consultant expertise

The Schaaf & Wheeler Consulting Civil Engineers were ranked the highest, most qualified team and they meet the City of Oakland's Professional Services Goals (LBE/SLBE). They were ranked the highest because of their relevant experience and familiarity with similar pump stations in the neighboring cities which are subject to similar regulatory requirements. Their team also presented the most cohesive and responsive approach to Oakland specific issues related to site constraints and analysis of various alternatives. The Schaaf & Wheeler Consulting Civil Engineers LBE and SLBE participation is 52.3%. (See Contract Compliance evaluation result in ***Attachment A***)

## **ANALYSIS**

Adoption of the resolution will allow staff to enter into a professional services contract with Schaaf & Wheeler Consulting Civil Engineers. The Consultant will provide technical service, produce bid documents for the six (6) pump station improvements (Plans, Specifications, and Engineer's Estimate), and provide construction support during construction. The project is scheduled to begin in November 2013 and be completed by August 2015. The project schedule is shown in ***Attachment B***.

## **PUBLIC OUTREACH/INTEREST**

These are existing stations that must be modified to meet new regulatory standards. When construction begins, affected business and adjacent owners will be notified.

Item: \_\_\_\_\_  
Public Works Committee  
December 3, 2013

**COORDINATION**

As part of the project design, the Consultant will be required to coordinate the project with all stakeholders including the Public Works maintenance staff, who will be responsible for maintaining these pump stations. Staff has worked and coordinated this project with the following offices:

- Public Works Agency – Department of Infrastructure and Operations
- In addition, the following reviewed this report and resolutions:
  - Office of the City Attorney
  - City Budget Office

**COST SUMMARY/IMPLICATIONS**

Approval of the resolution will authorize the City Administrator or her designee to execute a professional services contract with Schaaf & Wheeler Consulting Civil Engineers, in the amount not to exceed \$450,000.00.

1. AMOUNT OF RECOMMENDATION/COST OF PROJECT:

COST ELEMENT	AMOUNT
Proposal Cost	\$450,000.00

2. COST ELEMENTS OF AGREEMENTS/CONTRACTS: \$450,000.00

3. SOURCE OF FUNDING:

FUNDING SOURCES	AMOUNT
Sewer Service Fund (3100); Capital Project – Sanitary Sewer Design Organization (92244); Sewers Account (57417); Project C267630	\$450,000.00

4. FISCAL IMPACT:

Approval of the resolution will authorize the City Administrator or her designee to execute a professional service contract with Schaaf & Wheeler Consulting Civil Engineers, for an amount not to exceed \$450,000.00. The project will upgrade the existing six (6) sanitary sewer pump stations, reduce sewer overflows, and reduce ongoing maintenance costs.

Item: \_\_\_\_\_  
Public Works Committee  
December 3, 2013

**SUSTAINABLE OPPORTUNITIES**

**Economic:** A functioning sanitary sewer system improves the community and makes Oakland more attractive for residents and businesses. Sewer overflows cause economic hardships and result in fines by the EPA of a maximum of \$27,500.00 per day.

**Environmental:** The sanitary sewer pump station improvements projects will reduce the possibility of overflows, thereby, benefiting the environment.

**Social Equity:** The sanitary sewer pump station improvements projects will take place throughout the City, thereby, benefiting all Oakland residents with decreased sewer overflows and improved infrastructure.

For questions regarding this report, please contact Gus Amirzehni, Engineering Design and Right-of-Way Manager, 510-238-6601.

Respectfully submitted,



BROOKE A. LEVIN  
Interim Director, Public Works Agency

Reviewed by:  
Michael Neary, P.E., Assistant Director,  
PWA, Department of Engineering and Construction

Reviewed by:  
Gus Amirzehni, P.E., Engineering and R.O.W. Manager

Prepared by:  
Gunawan Santoso, P.E., Acting Supervising Civil Engineer  
Engineering Design & R.O.W. Management Division

Attachments:

- Attachment A - Contracts & Compliance Unit Compliance Evaluation
- Attachment B - Project Schedule

Item: \_\_\_\_\_  
Public Works Committee  
December 3, 2013



# Memo

Office of the City Administrator  
Contract & Compliance Division

To: David Ng, Civil Engineer  
From: Sophany Hang, Assistant Contract Compliance Officer  
Co: File  
Date: October 14, 2013  
Re: Living Wage Ordinance (LWO) / Equal Benefits Ordinance (EBO)  
Compliance Analysis of: Schaaf & Wheeler Consulting Civil Engineers

The Office of The City Administrator, Contracts and Compliance Division, reviewed the professional or specialized service agreement for the above referenced City Financial Assistance Recipient (CFAR).

Based on our review of the documentation submitted, it has been determined that the above reference firm is in compliance with the EBO and LWO requirements of the City of Oakland.

If you have any questions or need additional information, please contact me at ext. 3723.

CITY OF OAKLAND



DALZIEL BUILDING • 250 FRANK H. OGAWA PLAZA, SUITE 3341 • OAKLAND, CALIFORNIA 94612

Office of the City Administrator  
Contracts & Compliance Division

October 14, 2013

(510) 238-3970  
FAX (510) 238-3363  
TDD (510) 238-2007

Charles D. Anderson  
Schaaf & Wheeler Consulting Civil Engineers  
870 Market Street, Suite 1278  
San Francisco, CA 94102

Dear Business Owner:

Congratulations. Based on a review of the Declaration of Nondiscrimination (Schedule N-1) and supporting documentation, it has been determined that your firm is in full compliance with the Equal Benefits Ordinance, Chapter 2.32 of the Oakland Municipal Code.

Enclosed, please find a certificate of compliance. Provided benefits currently in place have not changed, the enclosed certificate satisfies the compliance review for future submittals to the City of Oakland, including grant applications.

While the certificate does not bear an expiration date, please be advised that updated documentation is required for all substantive changes to the current compliance status. Substantive changes may include, but not limited to: an open enrollment period after the date of this correspondence that includes benefits different from those reviewed for compliance; changes to the current collective bargaining agreement that affect the conditions of compliance with the Equal Benefits Ordinance; and/or changes to personnel policies affecting compliance with the Equal Benefits Ordinance. Please notify this office should any of these changes occur.

Should you have questions regarding this correspondence or the attached certificate, please contact Sophany Hang at (510) 238-3723 or via e-mail at [Shang@Oaklandnet.com](mailto:Shang@Oaklandnet.com). Remember, attaching a copy of the attached certificate satisfies the compliance review process.

Again, congratulations on this most recent accomplishment and best wishes in all of your efforts to do business with the City of Oakland.

Sincerely,

*Shelley Darensburg*  
Shelley Darensburg  
Senior Contract Compliance Officer

Enclosure



# City of Oakland

*Equal Benefits Ordinance*

## Certificate of Compliance

*is hereby awarded to*

***Schaaf & Wheeler Consulting Civil Engineers***

*For satisfying all requirements necessary for compliance with the Equal Benefits Ordinance*

*Shelley Darensburg*  
Shelley Darensburg  
Senior Contract Compliance Officer

Date 10/14/03





# INTER OFFICE MEMORANDUM

**TO:** Gunawan Santoso,  
Civil Engineer

**FROM:** Deborah Barnes, Manager *S. Barnes*  
Contracts and Compliance

**SUBJECT:** Compliance Analysis  
C267630-RFP for Pump Station Improvements

**DATE:** August 15, 2013

The City Administrator's Office, Contracts and Compliance Unit conducted compliance reviews of four (4) proposals in response to the above referenced project. Below is the outcome of the compliance evaluation for the minimum 50% Local and Small Local Business Enterprise (L/SLBE) participation requirement. Effective February, 2012, the City waived the 25% Small Local Business Enterprise (SLBE) requirement for certified local prime contractors competing for professional services contracts. In addition, firms are reviewed for compliance with the Equal Benefits Ordinance (EBO).

Responsive to EBO and L/SLBE Policies		Proposed Participation					Earned Credits and Discounts			EBO Compliant? Y/N
Company Name SLBE/VSLBE/LPG Certified Firms	Original Bid Amount	Total LBE/ SLBE	LBE	SLBE	*VSLBE	Total Credited participation	L/SLBE Participation Preference Points	Years in Oakland Preference Points	Oakland Workforce Preference Points	
Aliquot Associates, Inc. (LBE)	NA	89%	51%	38%	0%	89%	5 pts.	1 pt.	1 pt.	Y
BKF Engineers (LBE)	NA	60%	50%	10%	0%	60%	3 pts.	0 pts.	0 pts.	Y
MGE Engineering, Inc. (LBE)	NA	96%	37%	59%	0%	96%	5 pts.	1 pt.	0 pts.	Y
Company Name Non-Local and Non-LBE Certified Firms										
Schaaf & Wheeler	NA	52.30%	17.70%	34.60%	0%	52.30%	2 pts.	0 pts.	0 pts.	N

**Comments:** As noted above, all firms met and/or exceeded the minimum 50% L/SLBE participation requirement. Firms that are not EBO compliant will have to come into compliance prior to award.

Should you have questions or need additional information, please contact Sophany Hang, Assistant Contract Compliance Officer at ext. 3723.

**CONTRACTS AND COMPLIANCE**

Compliance Division



**PROJECT COMPLIANCE EVALUATION FOR :**

RE: RFP Pump Station Improvements

**CONSULTANT/CONTRACTOR:** Allquot Associates, Inc.

<u>Engineer's Estimate:</u>	<u>Contractors' Bid Amount</u>	<u>Over/Under Engineer's Estimate</u>
NA	NA	NA
<u>Bid discounted amount:</u>	<u>Preference Points:</u>	
N/A	5	

- 1. Did the 50% local/small local requirement apply: **YES**
- 2. Did the contractor meet the 50% requirement **YES**
  - a) % of LBE participation **61%**
  - b) % of SLBE participation **38%**
  - c) % of VSLBE participation **0%**
- 3. Did the contractor receive bid discount/preference points? **YES**  
(If yes, list the points received) **5 points**

5. Additional Comments.

6. Date evaluation completed and returned to Contract Admin./Initiating Dept.

8/15/2013  
Date

Reviewing Officer: *[Signature]*

Date: 8/15/2013

Approved By: *[Signature]*

Date: 8/15/2013

## LBE/SLBE Participation Aliquot Associates, Inc.

Project Name: RFP Pump Station Improvements

Project No.: C267630		Engineer's Estimate					Under/Over Engineers Estim				
Discipline	Prime & Subs	Location	Cert. Status	LBE	SLBE	VSLBE *double counted value	Total LBE/SLBE %	Total Percentages	For Tracking		
									Emn	MBE	WBE
<b>PRIME</b> Electrical Engineering Geotechnical Engineering Services Corrosion Engineers	Aliquot Associates, Inc.	Oakland	CB	43%			43%	43%	AP	43%	
	DTN Engineers, Inc.	Oakland	CB		38%		38%	38%	AP	38%	
	Fugro Consultants, Inc.	Oakland	CB	8%			8%	8%	C		
	JDH Corrosion Consultants, Inc.	Concord	UB					11%	C		
<b>Project Totals</b>				51%	38%	0%	89%	100%		81%	0%
<b>Requirements:</b> The 50% requirement can be satisfied by a combination of 25% LBE and 25% SLBE. The SLBE requirement is waived for Oakland certified prime consultants. An VSLBE's participation is double counted toward meeting the requirement.				LBE 25% OR 50%	SLBE 25%	VSLBE	TOTAL LBE/SLBE 50%	TOTAL	<b>Ethnicity</b> AA = African American A = Asian C = Caucasian H = Hispanic NA = Native American O = Other NL = Not Listed		
<b>Legend</b>		LBE = Local Business Enterprise SLBE = Small Local Business Enterprise Total LBE/SLBE = All Certified Local and Small Local Businesses NPLBE = NonProfit Local Business Enterprise NPSLBE = NonProfit Small Local Business Enterprise				UB = Uncertified Business CB = Certified Business MBE = Minority Business Enterprise WBE = Women Business Enterprise					



**CONTRACTS AND COMPLIANCE**

Compliance Division

**PROJECT COMPLIANCE EVALUATION FOR :**

RE: RFP Pump Station Improvements

**CONSULTANT/CONTRACTOR:** BKF Engineers

<u>Engineer's Estimate:</u> NA	<u>Contractors' Bid Amount</u> NA	<u>Over/Under Engineer's Estimate</u> NA	JES
<u>Bid discounted amount:</u> N/A	<u>Preference Points:</u> 3		

- 1. Did the 50% local/small local requirement apply: YES
- 2. Did the contractor meet the 50% requirement YES
  - a) % of LBE participation 50%
  - b) % of SLBE participation 10%
  - c) % of VSLBE participation 0%

3. Did the contractor receive bid discount/preference points? YES  
 (If yes, list the points received) 3 points

5. Additional Comments.

6. Date evaluation completed and returned to Contract Admin./Initiating Dept

8/15/2013  
Date

Reviewing Officer: Shelley Danenberg

Date: 8/15/2013

Approved By: Shelley Danenberg

Date: 8/15/2013

## LBE/SLBE Participation BKF Engineers

Project Name: RFP Pump Station Improvements

Project No.: C267630		Engineer's Estimate					Under/Over Engineers Estimate					
Discipline	Prime & Subs	Location	Cert. Status	LBE	SLBE	VSLBE/LPG *double counted value	Total LBE/SLBE %	Total Percentages	For Tracking Only			
									Ethnic	MBE	WBE	
PRIME Electrical Engineering SCADA Systems Corrosion Eng./Cathodic ProL Structural Engineering Geotechnical Engineering	BKF Engineers	Oakland	CB	50%			50%	50%	C		50%	
	MTH Engineers	Santa Clara	UB						AP	25%		
	The Eddco Group	San Carlos	UB						C	5%		
	Corrpro	San Leandro	UB						C	10%		
	KPW Structural Engineers	Oakland	CB						C	5%	5%	
	Rockridge Geotechnical Inc.	Oakland	CB						C	5%	5%	
<b>Project Totals</b>				50%	10%		60%	100%		25%	50%	
<b>Requirements:</b> The 50% requirement can be satisfied by a combination of 25% LBE and 25% SLBE. The SLBE requirement is waived for Oakland certified prime consultants. An VSLBE's participation is double counted toward meeting the requirement.				LBE 25% or 50%	SLBE 25%	VSLBE	TOTAL LBE/SLBE 50%	TOTAL	<b>Ethnicity</b> AA = African American A = Asian C = Caucasian H = Hispanic NA = Native American O = Other NL = Not Listed			
<b>Legend</b>		LBE = Local Business Enterprise SLBE = Small Local Business Enterprise Total LBE/SLBE = All Certified Local and Small Local Businesses NPLBE = NonProfit Local Business Enterprise NPSLBE = NonProfit Small Local Business Enterprise			UB = Uncertified Business CB = Certified Business MBE = Minority Business Enterprise WBE = Women Business Enterprise							



**CONTRACTS AND COMPLIANCE**

Compliance Division

**PROJECT COMPLIANCE EVALUATION FOR :**

RE:

**RFP Pump Station Improvements**

**CONSULTANT/CONTRACTOR: MGE Engineering, Inc.**

**Engineer's Estimate:**  
NA

**Contractors' Bid Amount**  
NA

**Over/Under**  
**Engineer's**  
**Estimate:**  
NA

**Bid discounted amount:**  
N/A

**Preference Points:**  
5

- 1. Did the 50% local/small local requirement apply: **YES**
- 2. Did the contractor meet the 50% requirement **YES**
  - a) % of LBE participation **37%**
  - b) % of SLBE participation **59%**
  - c) % of VSLBE participation **0%**
- 3. Did the contractor receive bid discount/preference points? **YES**  
(If yes, list the points received **5 points**)

5. Additional Comments.

[Empty box for additional comments]

6. Date evaluation completed and returned to Contract Admin./Initiating Dept.

8/15/2013

Date

**Reviewing Officer:**

[Signature]

**Date:** 8/15/2013

**Approved By:**

[Signature]

**Date:** 8/15/2013

## LBE/SLBE Participation MGE Engineering, Inc.

Project Name: **RFP Pump Station Improvements**

Project No.: NA		Engineer's Estimate				Under/Over Engineers Estimate			For Tracking Only		
Discipline	Prime & Subs	Location	Cert Status	LBE	SLBE	VSLBE/LPG *double counted value	Total LBE/SLBE %	Total Percentages	Ethnic	MBE	WBE
PRIME Mech/Elect. Eng. Geotechnical Invest. Surveying	MGE Engineering, Inc.	Oakland	CB	35%			35%	35%	AP	35%	
	YEI Engineers, Inc.	Oakland	CB		59%		59%	59%	AP	59%	
	Hultgren-Tillis Engineers	Concord	UB					4%	C		
	ANDREGG Geomatics	Oakland	CB	2%			2%	2%	C		
<b>Project Totals</b>				37%	59%	0%	96%	100%		94%	0%
<b>Requirements:</b> The 50% requirement can be satisfied by a combination of 25% LBE and 25% SLBE. The SLBE requirement is waived for Oakland certified prime consultants. An VSLBE's participation is double counted toward meeting the requirement				LBE 25% or 50%	SLBE 25%	VSLBE	TOTAL LBE/SLBE 50%	TOTAL	<b>Ethnicity</b> AA = African American A = Asian C = Caucasian H = Hispanic NA = Native American O = Other NL = Not Listed		
<b>Legend</b> LBE = Local Business Enterprise SLBE = Small Local Business Enterprise Total LBE/SLBE = All Certified Local and Small Local Businesses NPLBE = NonProfit Local Business Enterprise NPSLBE = NonProfit Small Local Business Enterprise								UB = Uncertified Business CB = Certified Business MBE = Minority Business Enterprise WBE = Woman Business Enterprise			



**CONTRACTS AND COMPLIANCE**

Compliance Division

**PROJECT COMPLIANCE EVALUATION FOR :**

RE: RFP Pump Station Improvements

**CONSULTANT/CONTRACTOR:** Schaaf & Wheeler

<u>Engineer's Estimate:</u>	<u>Contractors' Bid Amount</u>	<u>Over/Under Engineer's Estimate</u>
NA	NA	NA
<u>Bid discounted amount:</u>	<u>Preference Points:</u>	
N/A	2	

- 1. Did the 50% local/small local requirement apply: **YES**
- 2. Did the contractor meet the 50% requirement **YES**
  - a) % of LBE participation 18%
  - b) % of SLBE participation 35%
  - c) % of VSLBE participation 0%
- 3. Did the contractor receive bid discount/preference points? **YES**  
 (If yes, list the points received) **2 points**

4. Additional Comments.

[Empty rectangular box for additional comments]

5. Date evaluation completed and returned to Contract Admin./Initiating Dept.

8/15/2013

Date

**Reviewing  
Officer:**

*[Signature]*

Date: 8/15/2013

Approved By:

*[Signature]*

Date: 8/15/2013

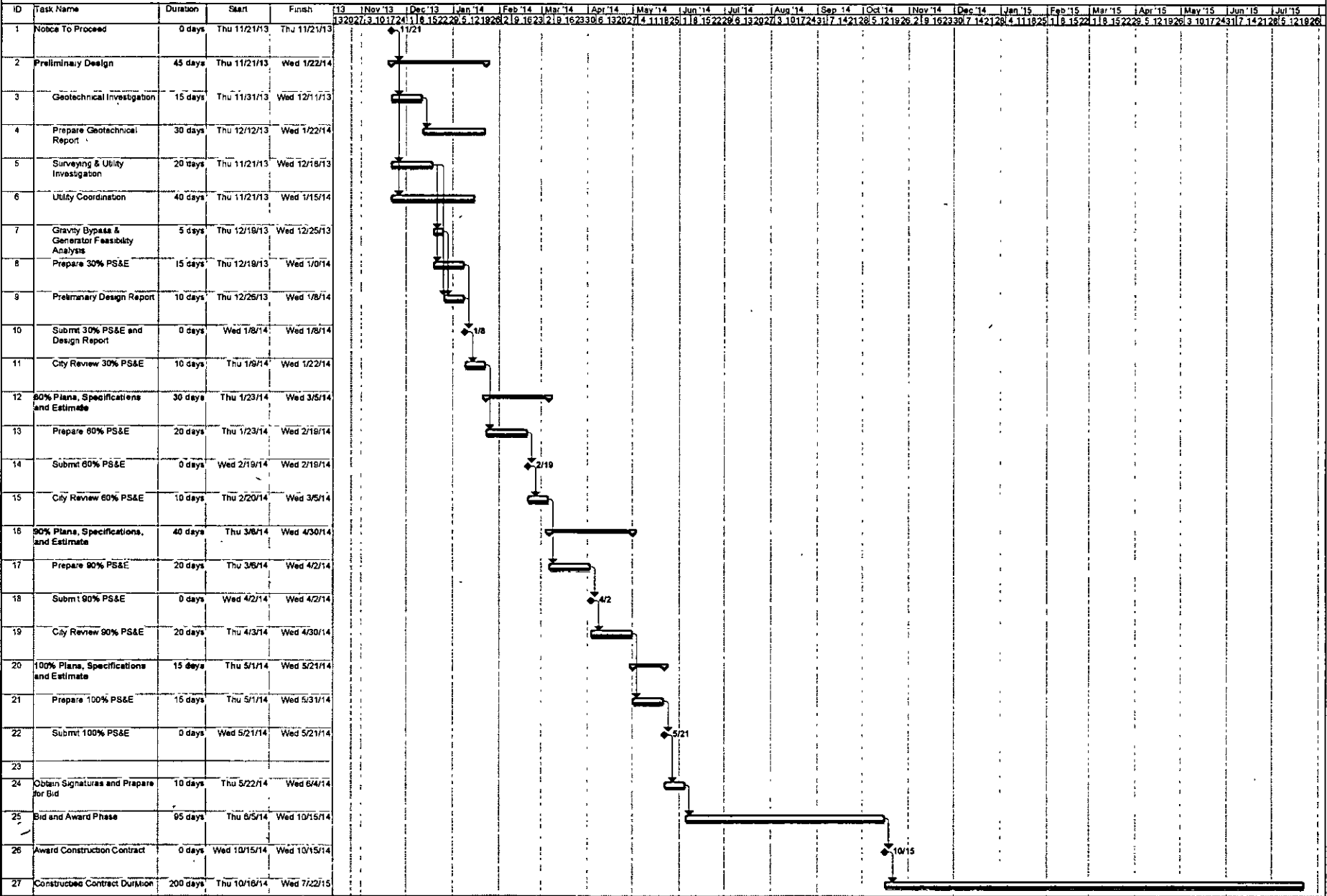


## LBE/SLBE Participation Schaaf & Wheeler

Project Name: RFP Pump Station Improvements

Project No.: NA		Engineer's Estimate					Under/Over Engineers Estimate					
Discipline	Prime & Subs	Location	Cert. Status	LBE	SLBE	VSLBE/LPG *double counted value	Total	Total	For Tracking Only			
							LBE/SLBE %	Percentages	Ethn.	MBE	WBE	
<b>PRIME</b>	Schaaf & Wheeler	SF	UB					47.70%	NL			
Elec /Struct. Design	TJC & Associates, inc.	Oakland	CB		34.60%		34.60%	34.60%	C			
Geotechnical Services	AGS, Inc.	Oakland	CB	6.70%			6.70%	6.70%	AP	7.00%		
Surveying	Telamon Eng. Consult., Inc.	Oakland	CB	11.00%			11.00%	11.00%	AP	11.00%		
<b>Project Totals</b>				17.70%	34.60%	0.00%	52.30%	100.00%		18.00%	0.00%	
<b>Requirements:</b> The 50% requirement can be satisfied by a combination of 25% LBE and 25% SLBE. The SLBE requirement is waived for Oakland certified prime consultants. An VSLBE's participation is double counted toward meeting the requirement				LBE: 25% or 50%	SLBE 25%	VSLBE	TOTAL LBE/SLBE 50%	TOTAL	<b>Ethnicity</b> AA = African American A = Asian C = Caucasian H = Hispanic NA = Native American O = Other NL = Not Listed			
<b>Legend</b>		LBE = Local Business Enterprise SLBE = Small Local Business Enterprise Total LBB/SLBE = All Certified Local and Small Local Businesses NPLBE = NonProfit Local Business Enterprise NPSLBE = NonProfit Small Local Business Enterprise				UB = Uncertified Business CB = Certified Business MBE = Minority Business Enterprise WBE = Women Business Enterprise						

City of Oakland  
 Pump Station Improvements, City Project No. C267630  
 Proposed Project Schedule



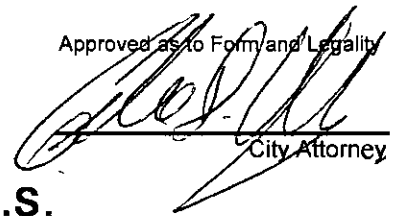
Duration is in working days

October 25 2013

FILED  
OFFICE OF THE CITY CLERK  
OAKLAND

# OAKLAND CITY COUNCIL

Approved as to Form and Legality



City Attorney

2013 NOV 21 AM 9: ~~R~~ RESOLUTION No. \_\_\_\_\_ C.M.S.

Introduced by Councilmember \_\_\_\_\_

**RESOLUTION AUTHORIZING THE CITY ADMINISTRATOR OR HER DESIGNEE TO ENTER INTO A PROFESSIONAL SERVICES AGREEMENT WITH SCHAAF & WHEELER CONSULTING CIVIL ENGINEERS FOR ENGINEERING SERVICES FOR OAKLAND'S SANITARY SEWER PUMP STATION IMPROVEMENTS (PROJECT NO. C267630) IN AN AMOUNT NOT-TO-EXCEED FOUR HUNDRED FIFTY THOUSAND DOLLARS (\$450,000.00)**

**WHEREAS,** In accordance with several regulatory requirements, Oakland is required to upgrade the existing six (6) sanitary sewer pump stations. The improvements will entail ensuring adequate capacity for peak weather flows, providing an automatic alarm system and backup or redundant equipments, and upgrading mechanical and electrical; and

**WHEREAS,** the City conducted a competitive Request for Proposals (RFP) selection process; and

**WHEREAS,** on August 1, 2013, the PWA Contract Services received proposals from four consultants for Engineering Services for Oakland's Sanitary Sewer Pump Station Improvements (Project no. C267630); and

**WHEREAS,** after reviewing all four proposals and conducting a selection process including presentation and interview, Schaaf & Wheeler Consulting Civil Engineers was selected as the most qualified consultant to perform the services; and

**WHEREAS,** there are sufficient funds in the project budget for the work in the following project account: Sewer Service Fund (3100); Capital Projects - Sanitary Sewer Design Organization (92244); Sewers Account (57417); Project No. C267630; \$450,000.00; and these funds were specifically allocated for this project; and

**WHEREAS,** Schaaf & Wheeler Consulting Civil Engineers and its team comply with all City's LBE/SLBE requirements for professional services; and

**WHEREAS,** Schaaf & Wheeler Consulting Civil Engineers will assist the City of Oakland in preparing Engineering Services for Oakland's Sanitary Sewer Pump Station Improvements to comply with EPA requirements; and

**WHEREAS,** Schaaf & Wheeler Consulting Civil Engineers has submitted a comprehensive proposal for each task and cost within a reasonable time frame; and

**WHEREAS,** the City Administrator has determined that this contract is for services of a professional, scientific or technical and temporary nature; and

**WHEREAS**, the City Administrator has determined that this contract shall not result in the loss of employment or salary by any person having permanent status in the competitive service; now, therefore, be it

**RESOLVED:** That the City Administrator or her designee is hereby authorized to enter into an agreement with Schaaf & Wheeler Consulting Civil Engineers, to provide professional Engineering Services for Oakland's Sanitary Sewer Pump Station Improvements—Project no. C267630 in an amount not-to-exceed Four Hundred Fifty thousand dollars (\$450,000.00); and be it

**FURTHER RESOLVED:** That the City Administrator or his designee is hereby authorized to approve any subsequent amendments to or extensions of said agreement, except those involving additional compensation or the allocation of additional funds, provided that such amendments or extensions shall be filed with the City Clerk's Office; and be it

**FURTHER RESOLVED:** That the contract shall be reviewed and approved by the City Attorney for form and legality and placed on file in the Office of the City Clerk.

IN COUNCIL, OAKLAND, CALIFORNIA, \_\_\_\_\_, 20\_\_\_\_

PASSED BY THE FOLLOWING VOTE:

AYES - BROOKS, GALLO, GIBSON MCELHANEY, KALB, KAPLAN, REID, SCHAAF and PRESIDENT KERNIGHAN

NOES -

ABSENT -

ABSTENTION -

ATTEST: \_\_\_\_\_  
LaTonda Simmons  
City Clerk and Clerk of the Council  
of the City of Oakland, California