

# Regional Action Plan (RAP)

Oakland City Council Presentation

JUNE 15, 2021



# All Home - who we are

All Home is a Bay Area organization advancing regional solutions that disrupt the cycle of poverty and homelessness, redress the disparities in outcomes as a result of race, and create more economic mobility opportunities for extremely low-income (ELI) individuals and families within the Bay Area.

We are working across regions, sectors, and silos to advance coordinated, innovative service delivery and build coalition-supported momentum to challenge the long-standing systems that perpetuate homelessness.

# Why is regionalism important?

- The lack of affordable housing and increasing homelessness, as a result, is a regional problem that no one city or county can solve on its own.
- Regionalism works – e.g., public health orders were effective because Bay Area counties acted together and at the same time.
- Current practices are already crossing city and county borders

# City of Oakland fact sheet

4,071

PIT count (2019)

988

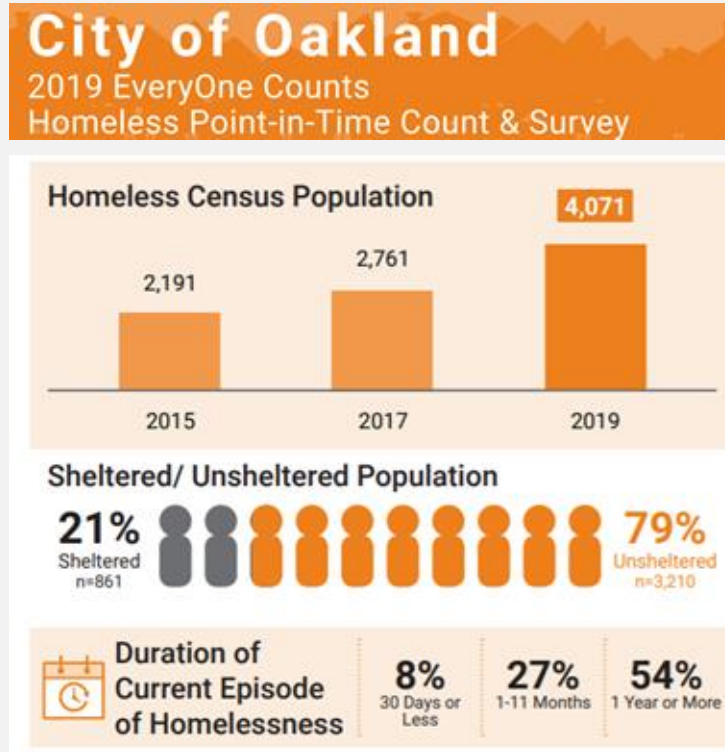
McKinney-Vento  
Count (2018)

~180k

Total ELI individuals<sup>1</sup>  
(2018)

\$2.7k

Monthly ELI income  
threshold (2021)<sup>3</sup>



- Total homeless population has grown by ~86% over the past 4 years
- ~79% of the homeless population is unsheltered (2019)
- City of Oakland minimum wage, at full time, is ~\$2,262/ month
- COVID-related job loss: 40,700 (78% BIPOC, 51% low income)<sup>4</sup>
- 41% of ELI renter HHs are in the labor force<sup>2</sup>

Source: 2020 Alameda County Homeless System Modeling (EveryOne Home); Terner Center analysis of 2018 ACS 5-Year PUMS data & unemployment statistics from the U.S. Bureau of Labor Statistics Current Employment Survey (June 2020), oaklandca.gov, Oakland Housing Authority

1. Alameda County Data; rough estimate based on 64k ELI renter households and 2.86 average persons per HH 2. state-wide CA data; 3. Alameda County Data for 2 person household; 4. Alameda County Data

# The Regional Impact Council

A roundtable of policymakers, key affordable housing, social equity and economic mobility stakeholders, housing and homelessness service providers, and business and philanthropic partners



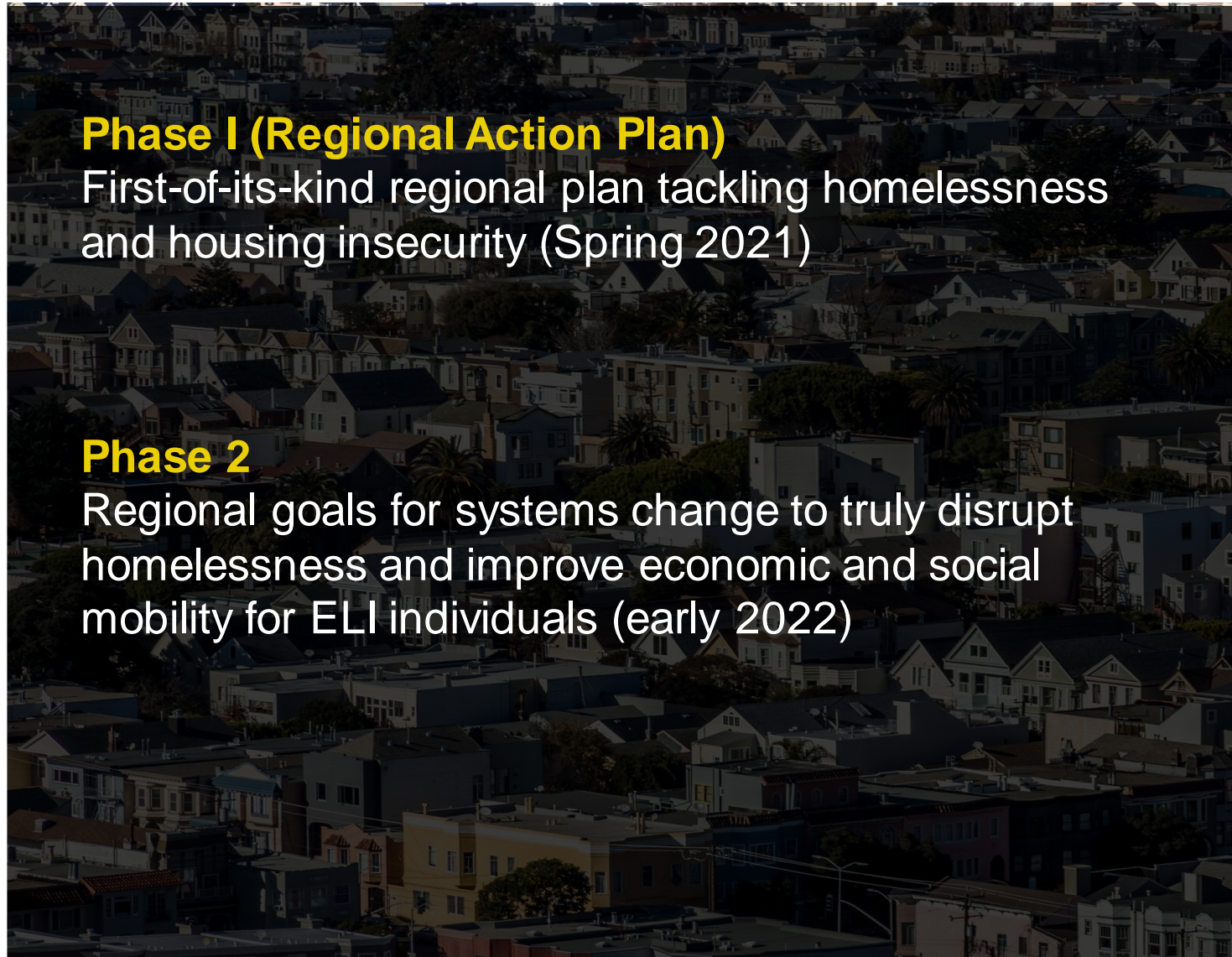
**RIC**  
REGIONAL IMPACT COUNCIL

## **Phase I (Regional Action Plan)**

First-of-its-kind regional plan tackling homelessness and housing insecurity (Spring 2021)

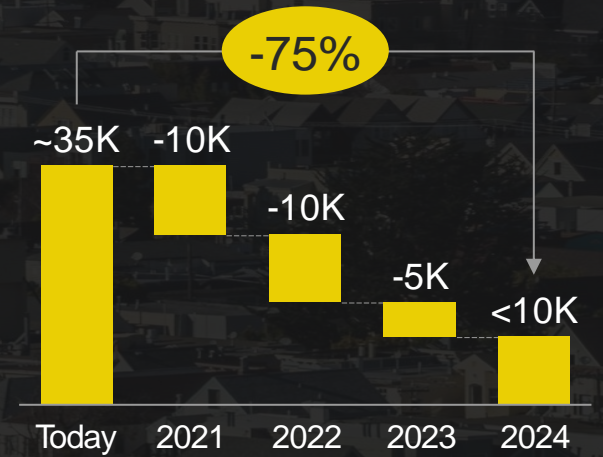
## **Phase 2**

Regional goals for systems change to truly disrupt homelessness and improve economic and social mobility for ELI individuals (early 2022)



# Regional Action Plan: Reduce unsheltered homelessness by 75% by 2024

The RAP aims to dramatically reduce the number of people experiencing unsheltered homelessness over next three years



The Regional Action Plan lays out a roadmap for reaching this goal through:



Implementing a 1-2-4 Framework: a new, integrated approach to allocating scarce housing resources



Leading a coalition to advocate for policies, programs and funding to achieve this goal

# To achieve a 75% reduction, we must simultaneously invest in 3 interventions:

*For each addition to interim housing, 2x permanent housing solutions and 4x homelessness prevention*

## 1-2-4 Framework

### Unsheltered

+1x



#### Interim Housing

*(i.e., short-term / temporary solution on the path towards permanent exit)*

**Examples:**

- Navigation centers
- Tiny homes
- Shelter beds
- Etc..

+2x



#### Permanent Housing Solutions

**Examples:**

- Permanent Supportive Housing (PSH)
- Rapid re-housing (RRH)
- Flexible subsidy pools / shallow subsidies
- Section 8 vouchers
- Group housing
- Other long-term housing solutions

### Currently housed

*Stemming inflow*

+4x



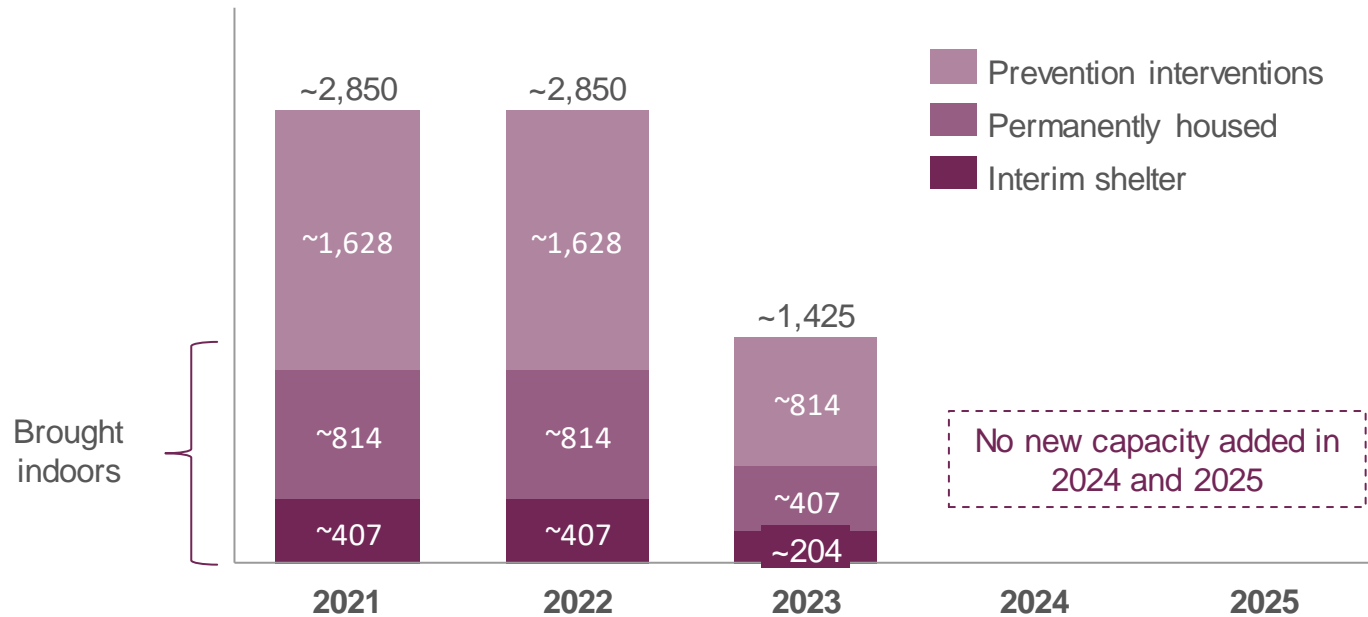
#### Homelessness Prevention

*Prevent at-risk households from experiencing homelessness through increased investment in strategies such as rental assistance*

# 1-2-4 Flow | Illustrative modeling for City of Oakland

Illustrative:  
City of Oakland view

# New interventions (HHs served)



~3K  
(75% of 2019 PIT)

Total brought indoors until 2024

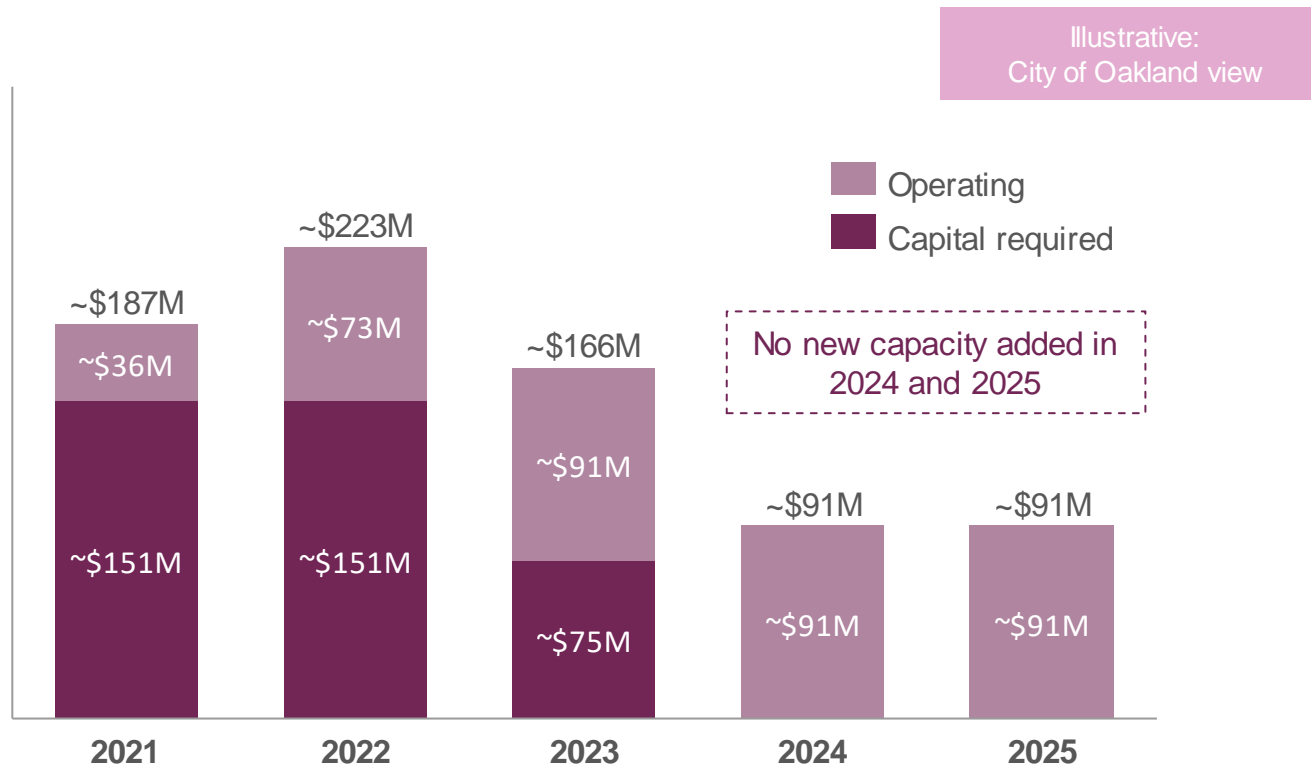
~4K

Total new prevention interventions

Note: "Brought indoors" defined as brought from unsheltered to housing in interim housing or housing solutions (including subsidies); Sources: San Francisco, Alameda, Contra Costa County documents and experts; Bay Area Council Economic Institute Homelessness Report



# 1-2-4 Flow | Illustrative cost modeling for City of Oakland



~\$758M

5-year cumulative cost

Note: Cost estimates based on ranges from various Bay Area sources; capital costs include construction costs and assume no land costs; operating costs include services provided and subsidies; no discounting applied; scenario modeled is 30%/30%/15% scenario housing 75% of unsheltered before 2024; construction timelines and funding pools assumed flexible to timeline shown; Sources: San Francisco, Alameda, Contra Costa County documents and experts; Bay Area Council Economic Institute Homelessness Report

# Three steps to implement the 1-2-4 Framework

## Evaluate

Evaluate how each city and county allocates existing resources

## Align

Identify opportunities to align **existing resources** with the 1-2-4 framework

## Advocate

Advocate for **new resources** to fill gaps and scale interventions commensurate with the need

# Prevention: Differentiating Interventions on the Prevention Continuum

*Reducing new episodes of homelessness requires a suite of prevention intervention strategies deployed such that each household gets what they need at the time they need it*

## Eviction Prevention

### Eligible Population:

- ***Future risk of homelessness***
- *Leaseholders*
- *0-50% AMI*

### Targeting criteria:

- *HHs with a previous episode of homelessness*
- *Highly impacted communities and neighborhoods*

## Homelessness Prevention

### Eligible Population:

- ***Imminent risk of homelessness***
- *Doubled up or leaseholders*
- *0-30% AMI*

### Targeting criteria:

- *HHs with a previous episode of homelessness*
- *Highly impacted communities and neighborhoods*

## Homelessness Diversion

### Eligible Population:

- ***Presenting for homelessness assistance***
- *Doubled up*
- *0-30% AMI*

### Targeting criteria:

- *HHs with a previous episode of homelessness*
- *Highly impacted communities and neighborhoods*

# How does the RAP compare to Oakland's PATH plan?

*High-level look at similarities & differences*

## → **Shared fundamental design principles:**

- A focus on racial equity and reducing structural causes
- Engages a spectrum of interventions from prevention to housing exits

→ **One core difference:** relative to the 1-2-4 Framework, the PATH plan calls for relatively **more permanent exits and less emphasis on prevention in roughly a 1-5-2 ratio.**

# How does Regional Impact Council and the RAP support Oakland in efforts to reduce homelessness?

- Advocacy for a regionally developed consensus strategies at the state and federal levels increase likelihood of success, especially when supported by a broad coalition of local government, business, philanthropic, non-profit organizations and people with lived experience.
- Alignment of public and private funding to maximize resources.
- Pro bono technical assistance, sharing of regional best practices, and facilitation of opportunities for cross-jurisdictional collaboration.



[www.allhomeca.org](http://www.allhomeca.org)

*To get in touch with us, please reach out to Nahema Washington at: [nwashington@allhomeca.org](mailto:nwashington@allhomeca.org)*