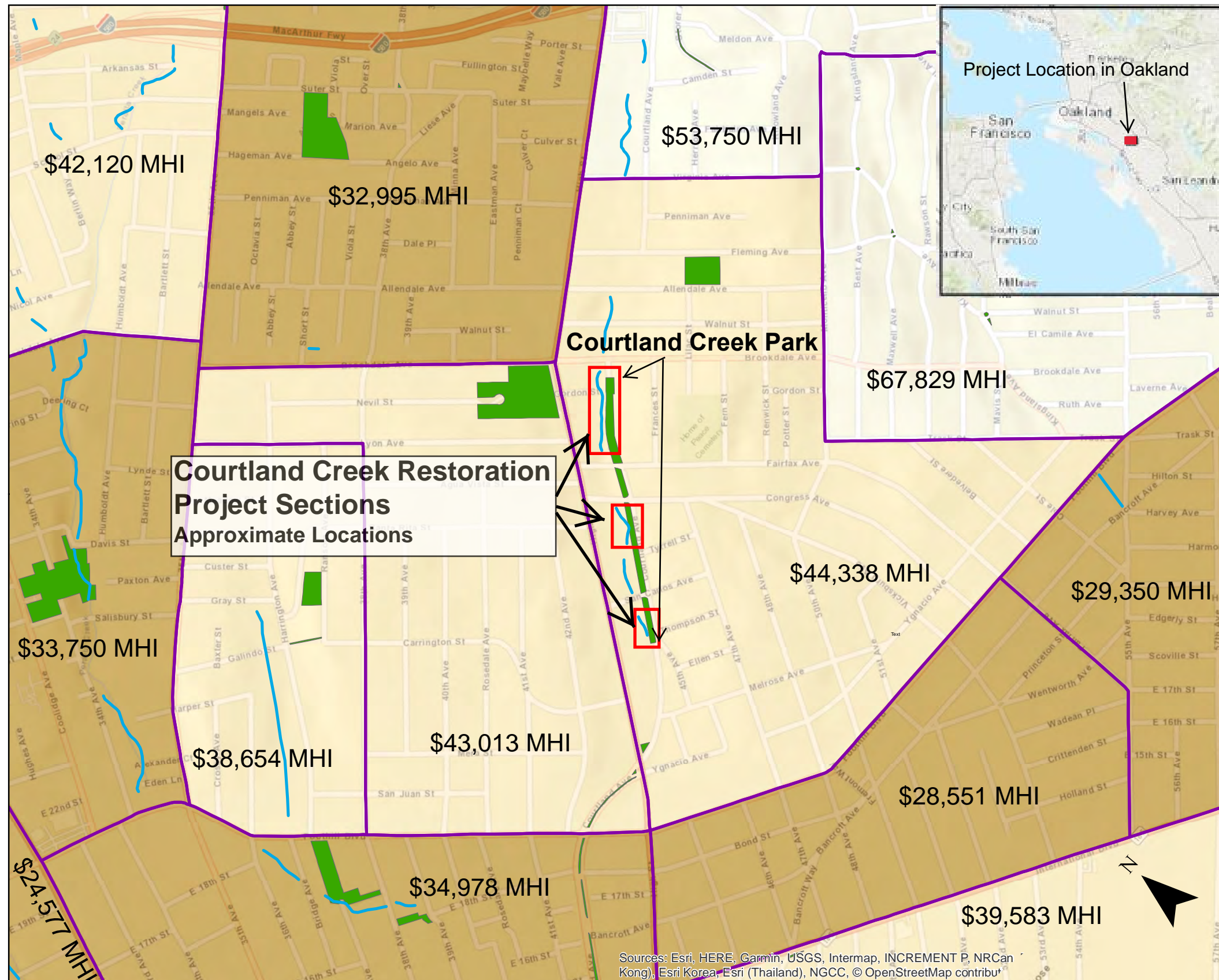


# Attachment F - Disadvantaged Communities Map for the Courtland Creek Restoration Project



- Oakland Creek
- Oakland Park
- Census Tract Boundary 2018
- Severely Disadvantaged Community
- Disadvantaged Community
- Project Section

This map shows Median Household Income (MHI) by U.S. Census Tract in relation to the Courtland Creek Restoration Project (Project) in Courtland Creek Park in Oakland, CA. The 2018 Census data defined Disadvantaged Communities (DACs) as those communities with an MHI between \$38,270 and \$51,026. Severely Disadvantaged Communities are defined as those communities with an MHI of less than \$38,270 in the 2018 data.

Census information displayed was taken from 2018 U.S. Census Bureau demographic data for the City of Oakland and is accessible online at the following url:  
[https://factfinder.census.gov/faces/tableservices/jsf/pages/productview.xhtml?pid=ACS\\_17\\_5YR\\_DP05&prodType=table](https://factfinder.census.gov/faces/tableservices/jsf/pages/productview.xhtml?pid=ACS_17_5YR_DP05&prodType=table)

This map is for informational purposes only.

