

RECYCLE RIGHT CHALLENGE

Recycling right is part of how we all help create a cleaner Oakland and more livable neighborhoods. Your strong participation in Oakland's **Zero Waste** program keeps recyclable and compostable materials out of our landfills.

Oakland Recycles is a collaborative program of the [City of Oakland, California Waste Solutions and Waste Management of Alameda County, Inc.](#) We are committed to providing the services and information you need to help this program succeed. Your pledge to recycle right makes a difference and we're here to help.

Contacts and Important Phone Numbers

Bulky Pickup Appointment (Contact Property Manager)

Waste Management of Alameda County, Inc. (510) 613-8710

Household Hazardous Waste Drop Off (800) 606-6606

Report Illegal Dumping

Oakland Public Works Call Center (510) 615-5566
www.OaklandPW.com Email: opw@oaklandnet.com Mobile app: SeeClickFix

Oakland Recycles Website..... www.OaklandRecycles.com
City of Oakland Recycling Hotline..... (510) 238-SAVE(7283)

For more tips on how to reduce and reuse before you recycle, go to:
www.OaklandRecycles.com.

Para obtener una copia de este folleto, visita OaklandRecycles.com

Để lấy bản sao của tài liệu này, xin truy cập OaklandRecycles.com

有關此副本宣傳冊，請訪問 OaklandRecycles.com

These Services Start July 1, 2015:

- Food scraps, food-soiled paper and plant debris collection for composting for all residents.
- Free annual bulky pickup – contact your property manager to schedule.
- Free bulky goods and electronics drop-off events four times a year.
- Compost giveaways twice a year for community and home garden or your household plants.
- Improved customer service features, including local customer call centers.
- All neighborhoods will be served by natural gas-fueled collection trucks to improve air quality throughout Oakland.

SERVICE INFORMATION

Recycling Right Starts in Your Home.

Set up separate containers to collect recyclables, compostables and trash in your apartment.

Place your separated recyclables, compostables and trash into the labeled containers in your complex.

Request a free kitchen pail and recycling caddy from your property manager.



Container Set-out Instructions

All carts or bins should be set-out curbside by 6 am on the regular scheduled pickup day.

NEW! Bulky Item Removal

Residents are eligible for one-time free bulky collection of up to 1.5 cubic yards of materials – bagged, boxed or bundled – per apartment PLUS: 1 large appliance, 2 electronics, 2 tires, 2 mattresses or box springs & 2 carpets.

Contact your property manager to schedule free bulky item pickup. Visit OaklandRecycles.com for complete program information.

NEW!
Free Bulky Drop Off

Furniture, Appliances,
Electronics—No Trash

First Saturday, 10 am to 2 pm
Aug., Nov., Feb. & May

Davis St. Transfer Station
2615 Davis St.
San Leandro

Free Holiday Tree Recycling Pickup

Trees are collected curbside during the first two weeks of January on regular pickup day. For larger buildings, property managers may choose to schedule a dedicated bin for collecting trees.

- Only clean trees are accepted: No “snow” flocking, stands or decorations.
- Curbside trees must be cut to less than 4' tall.



Household Hazardous and Toxic Waste

Fluorescent Bulbs, Paints, Stains, Solvents, Thinners, Adhesives, Pesticides, Cleaners, Household Garden and Auto Chemicals, Spray Cans, Batteries, Electronic Waste



Take these items to the Household Hazardous Waste (HHW) Facility at 2100 East 7th Street, Oakland. Limit is 15 gallons/125 pounds per vehicle. Open Wednesday – Saturday. Call (800) 606-6606 for hours of operation.



Available to all Alameda County residents (not businesses) who bring their own household hazardous waste. Visit StopWaste.org/HHW or call for more details, including Small Business Program information.

OAKLAND RECYCLES
YOUR RECYCLING TEAM
WASTE MANAGEMENT
CALIFORNIA WASTE SOLUTIONS

172 98th Avenue
Oakland, CA 94603

Return Service Requested

New Services Start July 1, 2015

- Compost collection
- Free curbside bulky pickup
- Free bulky drop-off
- Compost giveaways
- And more...

Details inside.

Apartment & Condominium Recycling Program Guide



OAKLANDERS RECYCLE RIGHT!

New Services Start July 1, 2015



YOUR RECYCLING TEAM
WASTE MANAGEMENT
CALIFORNIA WASTE SOLUTIONS



RECYCLE

回收 REICLAR TÁI CHẾ

Empty Glass, Aluminum, Metal & Plastic Containers, Beverage & Soup Boxes, Clean Paper & Cardboard



Used Batteries & Motor Oil

Put old batteries in sealed plastic bag on top of recycle cart or bin. Where permitted by property owner, put Motor Oil Recycling Kit next to cart. Request kit from property manager.

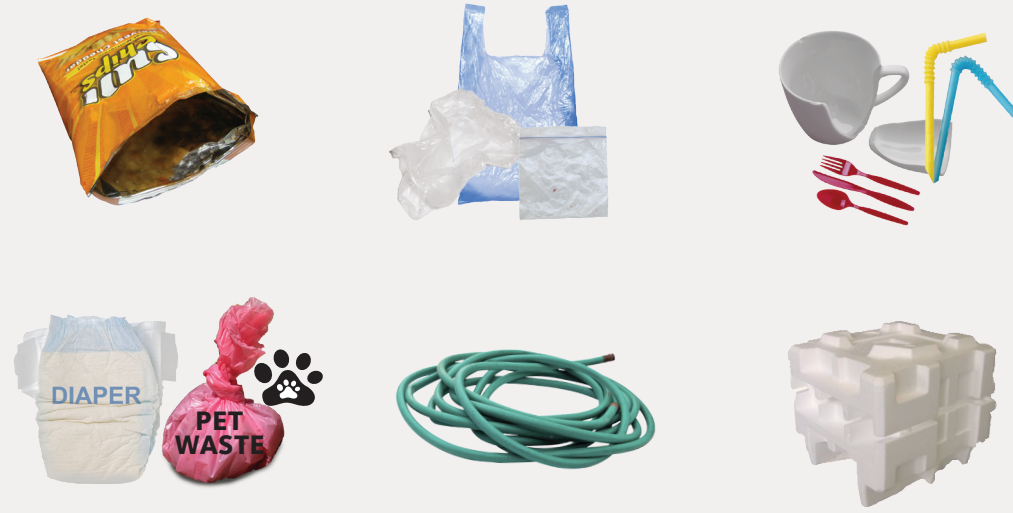
Put batteries here.



TRASH

垃圾 BASURA RÁC

Non-Recyclables, Non-Hazardous Materials



Used Clothing



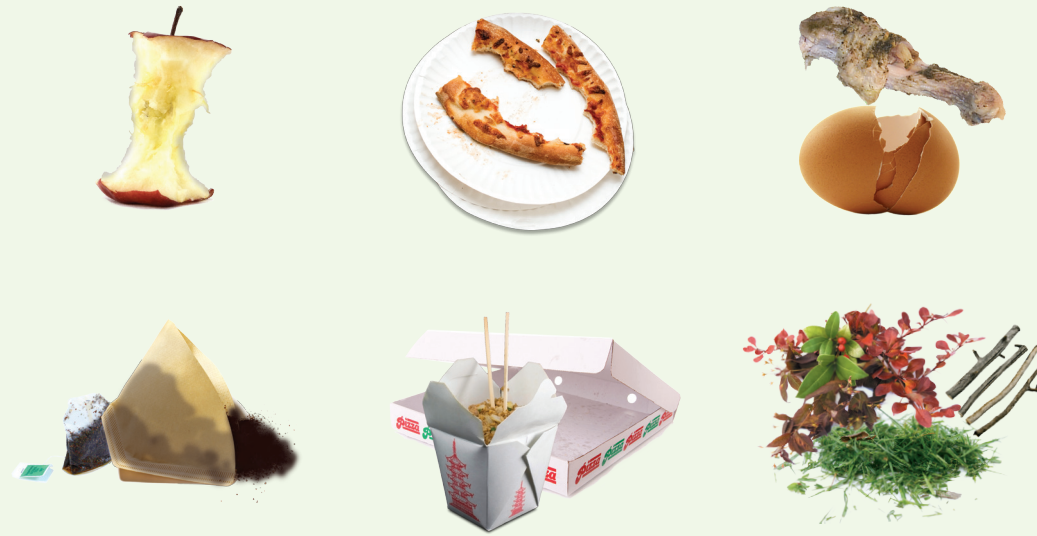
Donate gently worn items to a second-hand store or clothing drive. Tattered and stained clothes belong in the trash.



COMPOST

堆肥 ABONO PHÂN HỮU CƠ

Food Scraps, Food-soiled Paper, Plant Debris



NEW! Food Scraps Collection

On July 1, 2015, your complex will have a green compost cart to collect food scraps and plant debris.



COLLECTING FOR COMPOST

As Easy as 1-2-3!

- 1. SEPARATE**
Separate food scraps while preparing meals, scraping plates and cleaning the fridge.
- 2. COLLECT**
Use a kitchen pail, a reusable plastic tub or any compostable paper container such as take-out boxes or paper bags.
Include food-soiled paper such as coffee cups and filters, paper plates, napkins, paper towels, waxed/parchment paper, and take-out containers.
Freezing food scraps or wrapping them in newspaper can prevent leaks and odors.
No plastic bags of any kind.

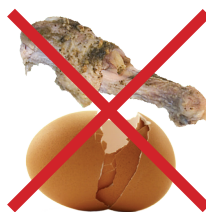


- 3. EMPTY**
Empty food scraps, food-soiled paper and plant debris into green compost cart.



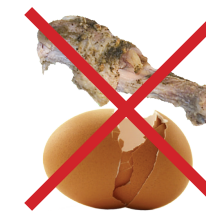
By collecting food scraps, we'll reduce waste and create compost for local farms and gardens. Visit OaklandRecycles.com for tips on food scraps composting.

Left: Acta Non Verba community garden in East Oakland



DO NOT INCLUDE

Any food scraps, non-recyclable or hazardous items. See reverse side for all Special Handling material.



DO NOT INCLUDE

Any food scraps or recyclables. See reverse side for all Special Handling material.



DO NOT INCLUDE

Any non-compostable item. See reverse side for all Special Handling material.

QUESTIONS?



510-Oakland (625-5263)

QUESTIONS?



510-613-8710

QUESTIONS?



510-613-8710

RECYCLE RIGHT - AVOID A CONTAMINATION FEE

When you place the right materials in the right cart, it benefits you and your community, and protects the environment. When you place the wrong materials in a cart, it can harm the environment, injure workers and result in additional charges to your account. Waste Management and California Waste Solutions can refuse to collect carts containing the wrong materials, and may charge contamination fees. Be sure to follow this guide to recycle right, and avoid contamination fees. Learn more at OaklandRecycles.com.