

Sources: Esri, HERE, DeLorme, Intermap, increment P Corp., GEBCO, USGS, FAO, NPS, NRCAN, GeoBase, IGN, Kadaster NL, Ordnance Survey, Esri Japan, METI, Esri China (Hong Kong), swisstopo, MapmyIndia, ©OpenStreetMap contributors, and the GIS User Community

**Legend**

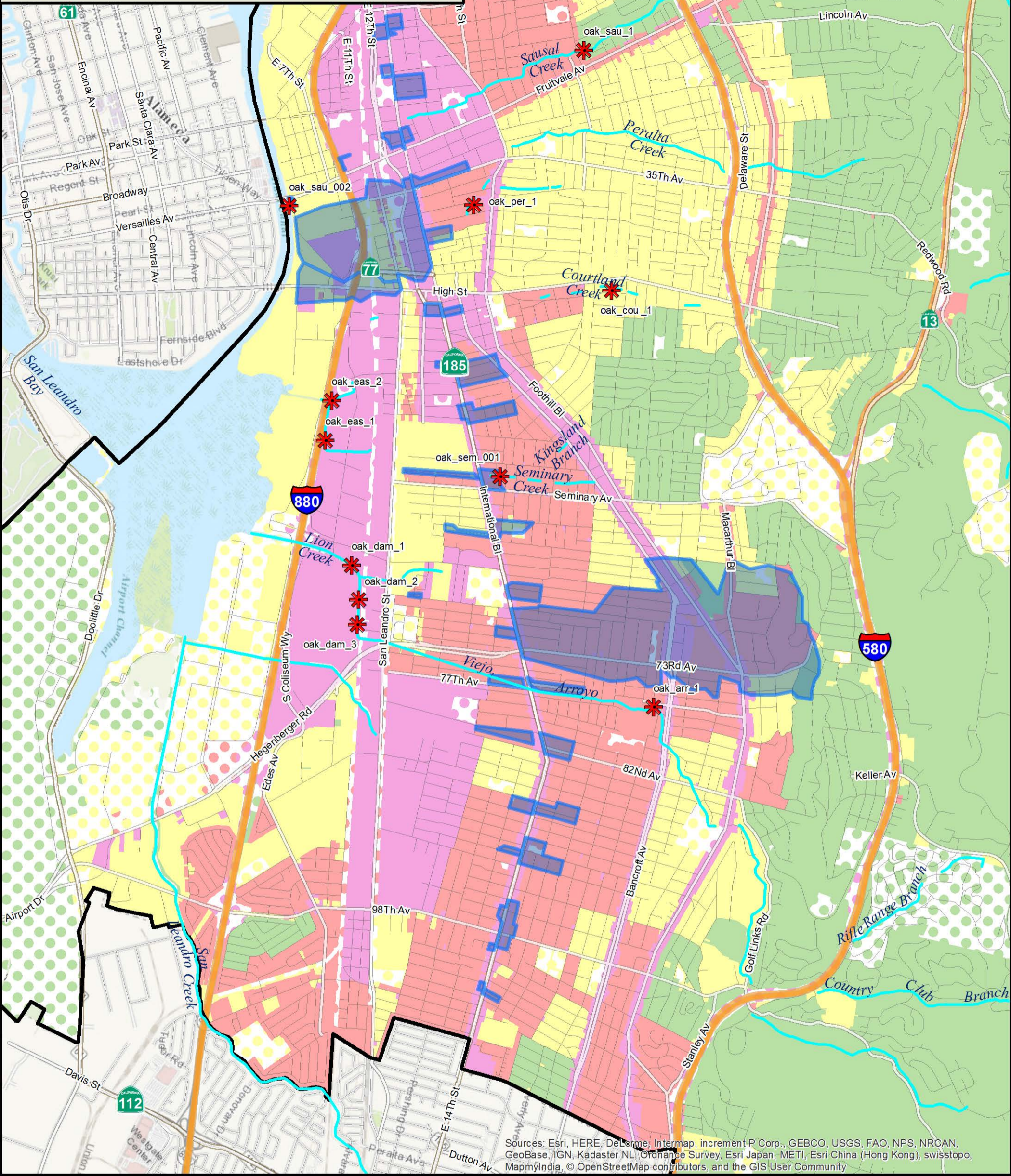
**Trash Generation Category**

- Low
- Moderate
- High
- Very High

- Creek/Shoreline Hotspot
- Full-Capture Location
- Trash Full Capture
- Non-Jurisdictional (Dot color = Generation Category)

- Streets
- Freeway
- Creeks





Sources: Esri, HERE, DeLorme, Intermap, increment P Corp., GEBCO, USGS, FAO, NPS, NRCAN, GeoBase, IGN, Kadaster NL, Ordnance Survey, Esri Japan, METI, Esri China (Hong Kong), swisstopo, MapmyIndia, © OpenStreetMap contributors, and the GIS User Community

## Legend

### Trash Generation Category

- Low
- Moderate
- High
- Very High

- Creek/Shoreline Hotspot
- Full-Capture Location
- Trash Full Capture
- Non-Jurisdictional (Dot color = Generation Category)

- Streets
- Freeway
- Creeks

