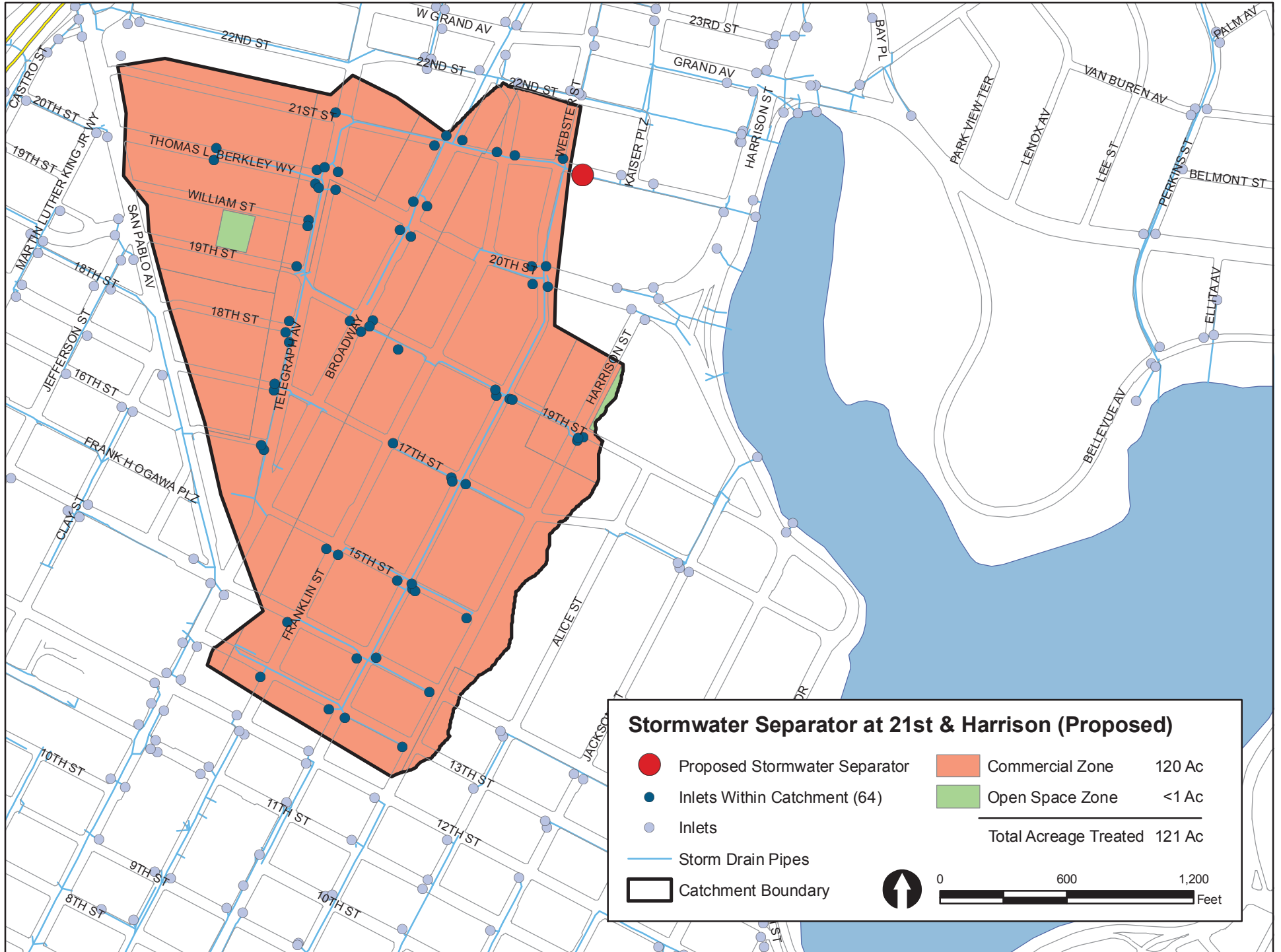


ATTACHMENT C



Stormwater Separator at 15th Ave and E 12th St (Proposed)

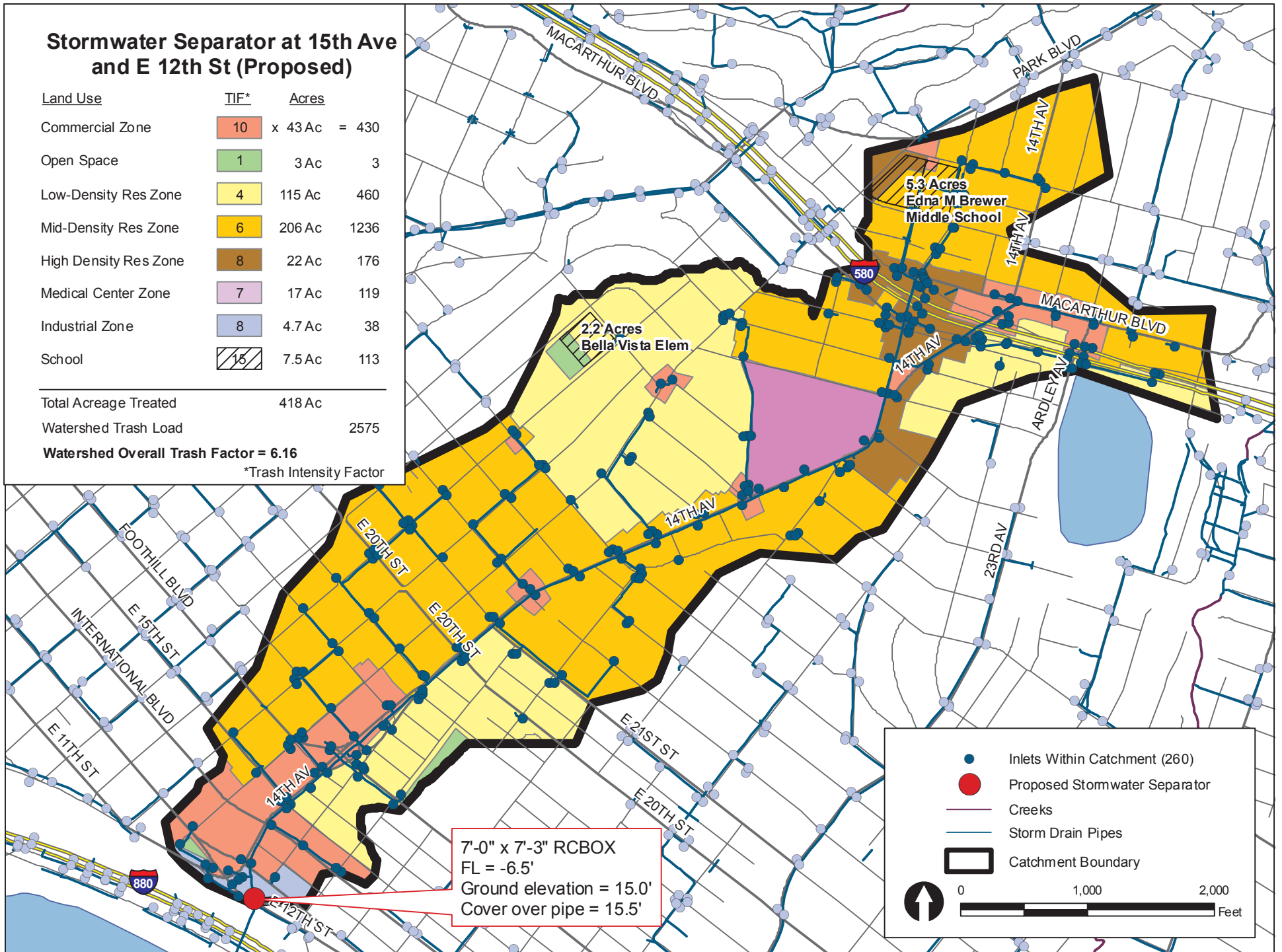
Land Use	TIF*	Acres
Commercial Zone	10	43 Ac = 430
Open Space	1	3 Ac = 3
Low-Density Res Zone	4	115 Ac = 460
Mid-Density Res Zone	6	206 Ac = 1236
High Density Res Zone	8	22 Ac = 176
Medical Center Zone	7	17 Ac = 119
Industrial Zone	8	4.7 Ac = 38
School	15	7.5 Ac = 113

Total Acreage Treated 418 Ac

Watershed Trash Load 2575

Watershed Overall Trash Factor = 6.16

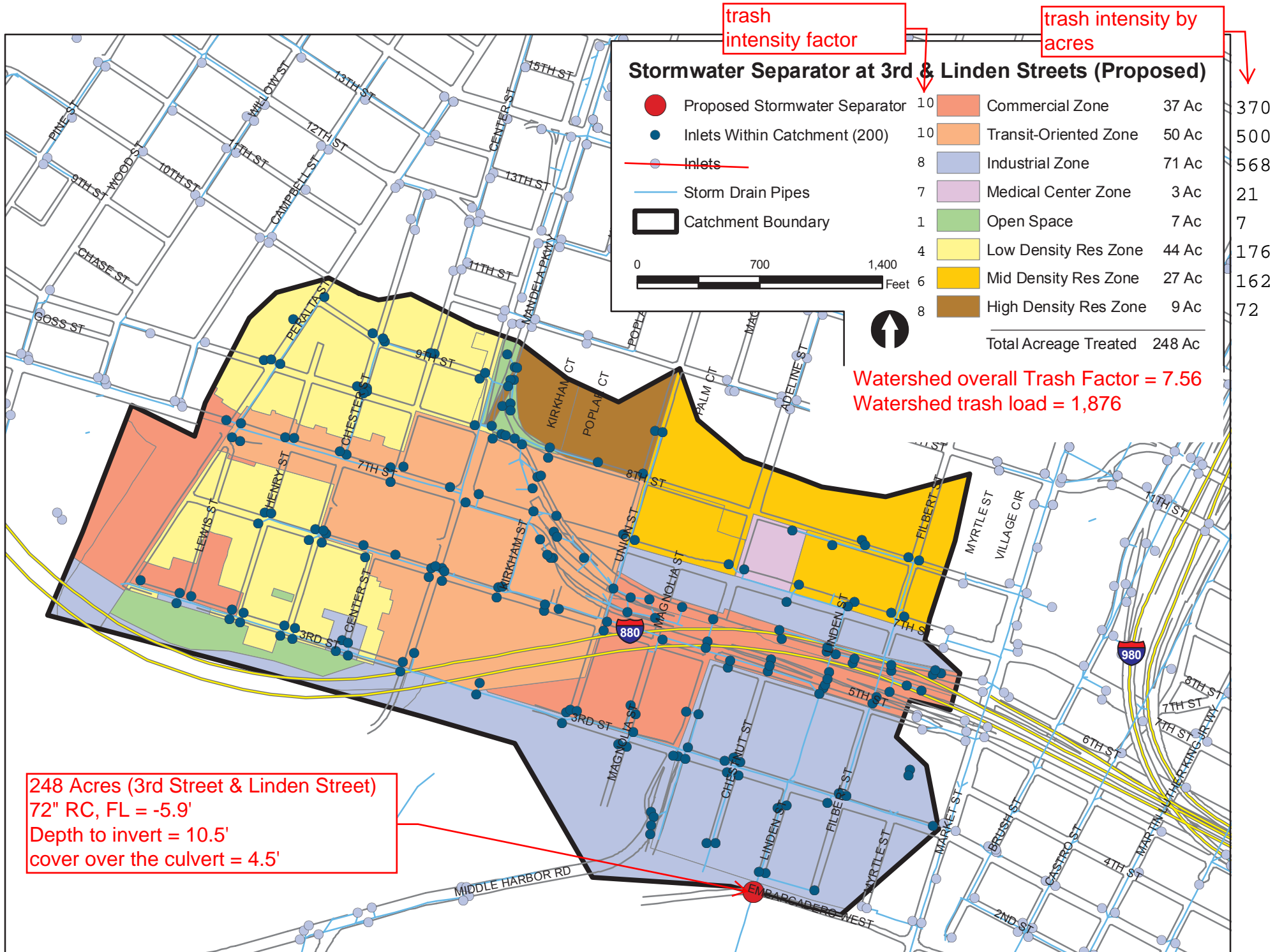
*Trash Intensity Factor



7'-0" x 7'-3" RCBOX
 FL = -6.5'
 Ground elevation = 15.0'
 Cover over pipe = 15.5'

- Inlets Within Catchment (260)
- Proposed Stormwater Separator
- Creeks
- Storm Drain Pipes
- Catchment Boundary

0 1,000 2,000 Feet



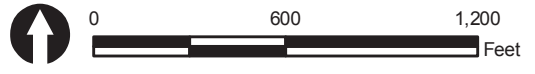
Stormwater Separator at Webster St below Embarcadero (Proposed)

Land Use	TIF*	Acres	
Commercial Zone	10	53 Ac	= 530
Central Business District	10	78 Ac	780
Industrial Zone	8	0.6 Ac	5
Open Space	1	3 Ac	3
High Density Res Zone	8	1.3 Ac	10
School	15	0.6 Ac	9

Total Acreage Treated 137 Ac
 Watershed Trash Load 1337

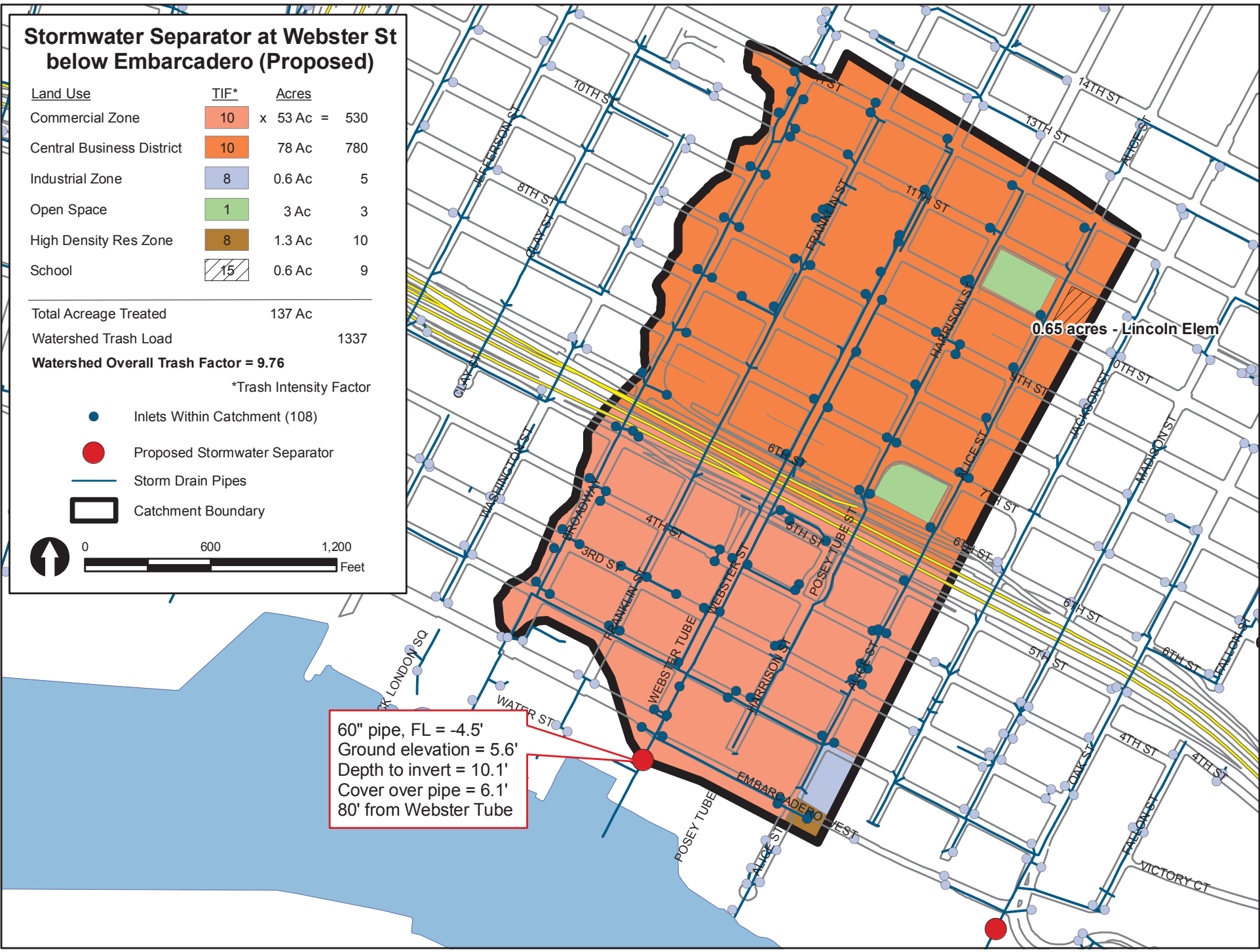
Watershed Overall Trash Factor = 9.76
 *Trash Intensity Factor

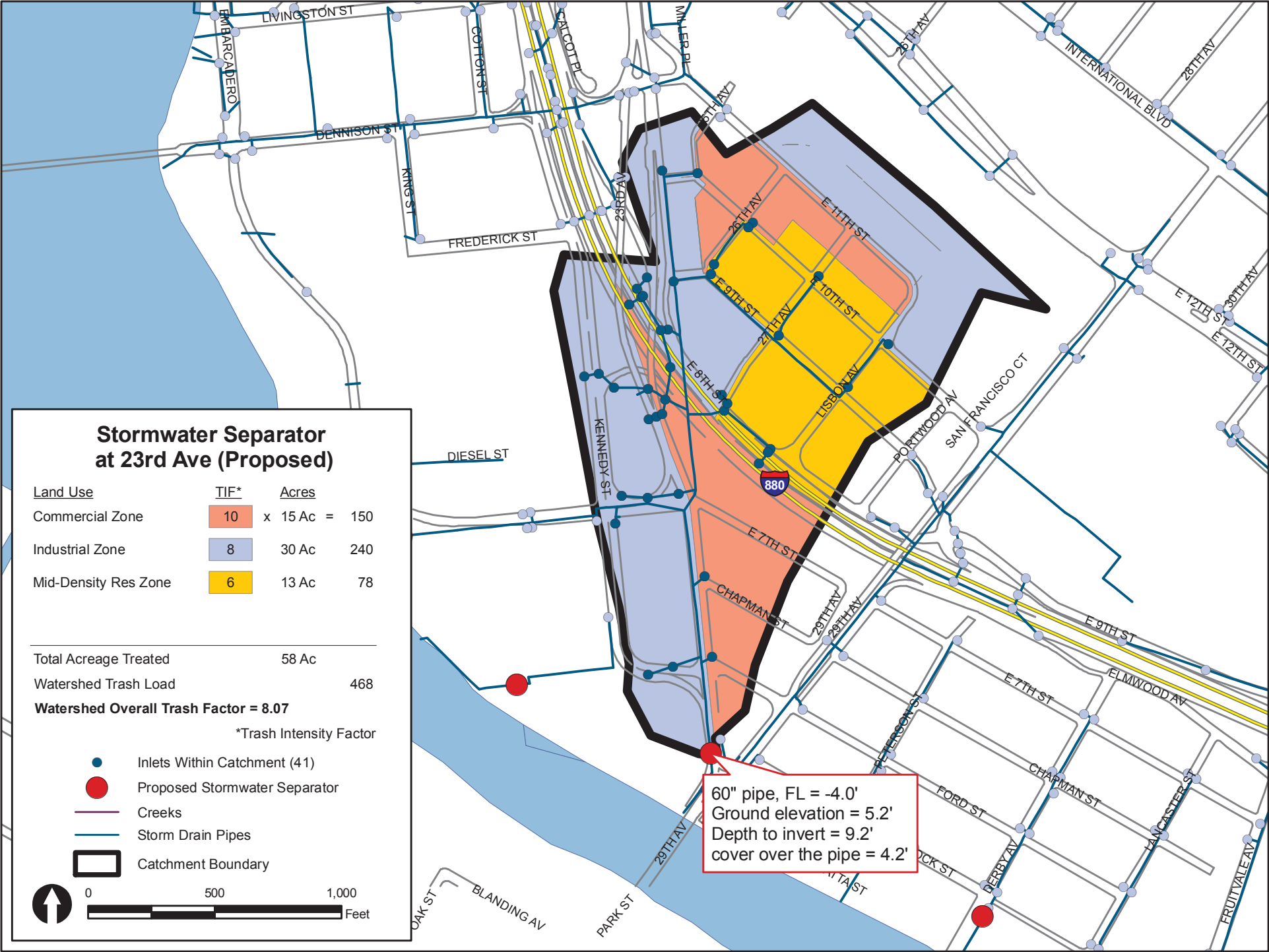
- Inlets Within Catchment (108)
- Proposed Stormwater Separator
- Storm Drain Pipes
- Catchment Boundary



60" pipe, FL = -4.5'
 Ground elevation = 5.6'
 Depth to invert = 10.1'
 Cover over pipe = 6.1'
 80' from Webster Tube

0.65 acres - Lincoln Elem





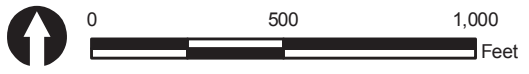
Stormwater Separator at 23rd Ave (Proposed)

Land Use	TIF*	Acres	
Commercial Zone	10	15 Ac	= 150
Industrial Zone	8	30 Ac	= 240
Mid-Density Res Zone	6	13 Ac	= 78

Total Acreage Treated: 58 Ac
 Watershed Trash Load: 468

Watershed Overall Trash Factor = 8.07
 *Trash Intensity Factor

- Inlets Within Catchment (41)
- Proposed Stormwater Separator
- Creeks
- Storm Drain Pipes
- Catchment Boundary



60" pipe, FL = -4.0'
 Ground elevation = 5.2'
 Depth to invert = 9.2'
 cover over the pipe = 4.2'

Stormwater Separator at Alameda Ave (Proposed)

Land Use	TIF*	Acres	
Commercial Zone	10	60 Ac	= 600
Transit-Oriented Zone	10	15 Ac	150
Industrial Zone	8	60 Ac	480
Low Density Res Zone	4	13 Ac	52

Total Acreage Treated 148 Ac
 Watershed Trash Load 1282

Watershed Overall Trash Factor = 8.66

*Trash Intensity Factor

● Inlets Within Catchment (117)

Stormwater Separator at 42nd Ave and High St (Proposed)

Land Use	TIF*	Acres	
Industrial Zone	8	35 Ac	280

Total Acreage Treated 35 Ac
 Watershed Trash Load 280

Watershed Overall Trash Factor = 8

● Inlets Within Catchment (13)

● Proposed Stormwater Separator

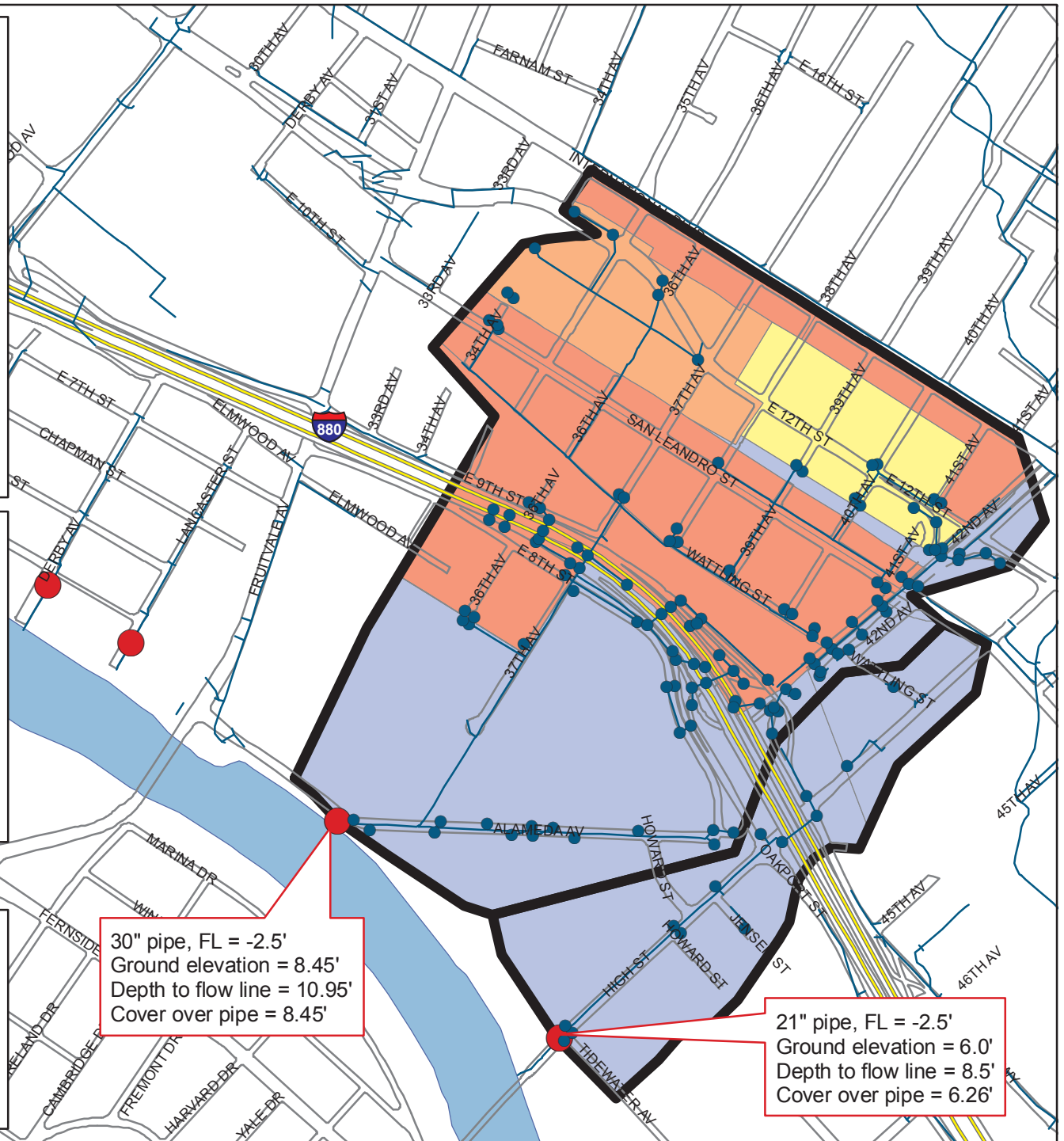
— Storm Drain Pipes

▭ Catchment Boundary



30" pipe, FL = -2.5'
 Ground elevation = 8.45'
 Depth to flow line = 10.95'
 Cover over pipe = 8.45'

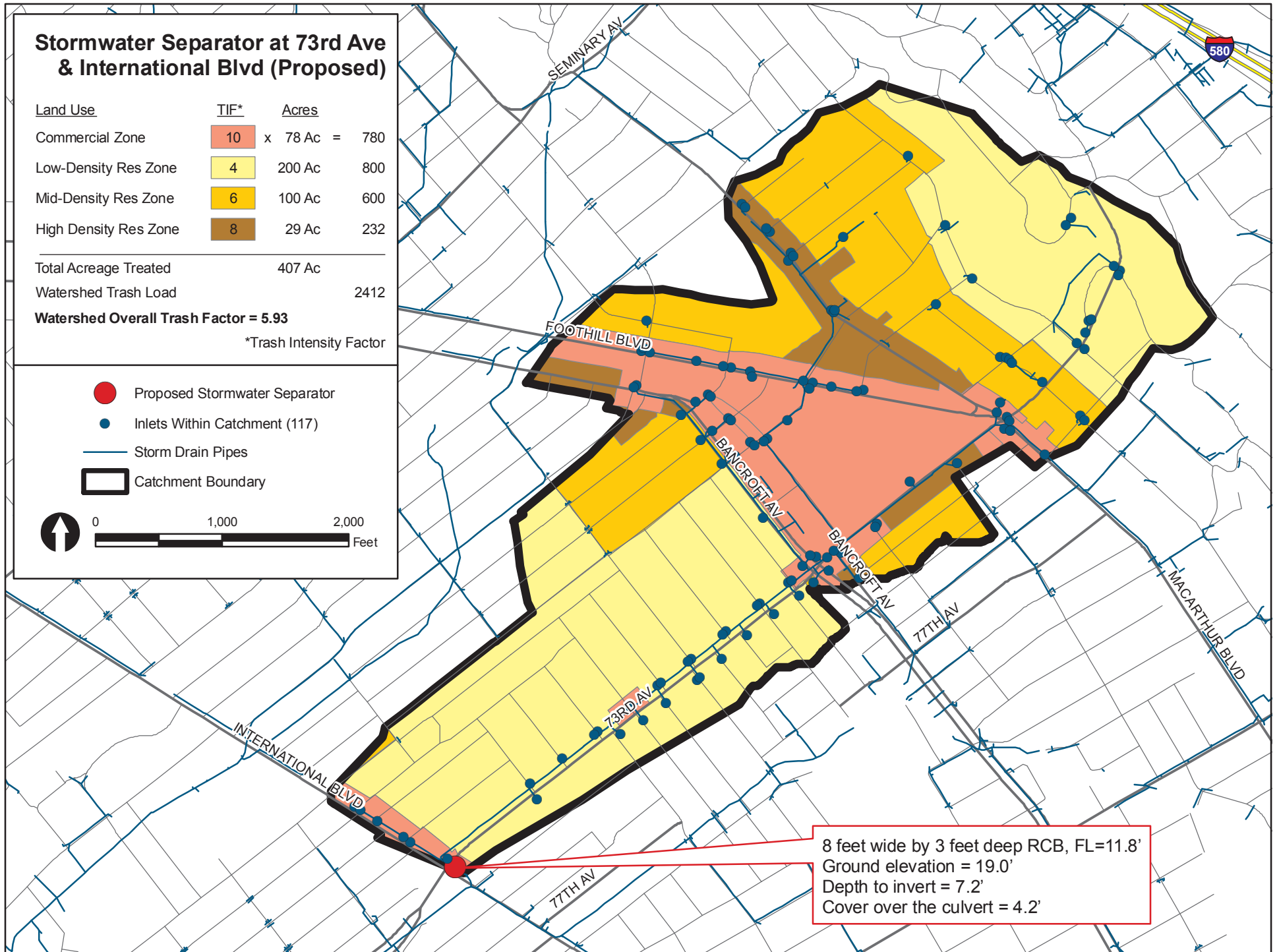
21" pipe, FL = -2.5'
 Ground elevation = 6.0'
 Depth to flow line = 8.5'
 Cover over pipe = 6.26'



Stormwater Separator at 73rd Ave & International Blvd (Proposed)

Land Use	TIF*	Acres	
Commercial Zone	10	78 Ac	= 780
Low-Density Res Zone	4	200 Ac	800
Mid-Density Res Zone	6	100 Ac	600
High Density Res Zone	8	29 Ac	232
Total Acreage Treated		407 Ac	
Watershed Trash Load		2412	
Watershed Overall Trash Factor = 5.93			
*Trash Intensity Factor			

- Proposed Stormwater Separator
- Inlets Within Catchment (117)
- Storm Drain Pipes
- Catchment Boundary



8 feet wide by 3 feet deep RCB, FL=11.8'
 Ground elevation = 19.0'
 Depth to invert = 7.2'
 Cover over the culvert = 4.2'

Stormwater Separator on 87th Ave above E St (Proposed)

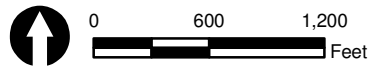
Land Use	TIF*	Acres
Commercial Zone	10	x 13.6 Ac = 136
Low-Density Res Zone	4	121 Ac 484
Mid-Density Res Zone	6	50.7 Ac 304.2
Open Space	1	0.3 Ac 0.3
High Density Res Zone	8	0 Ac 0
School	15	0 Ac 0

Total Acreage Treated 185.6 Ac
 Watershed Trash Load 924.3

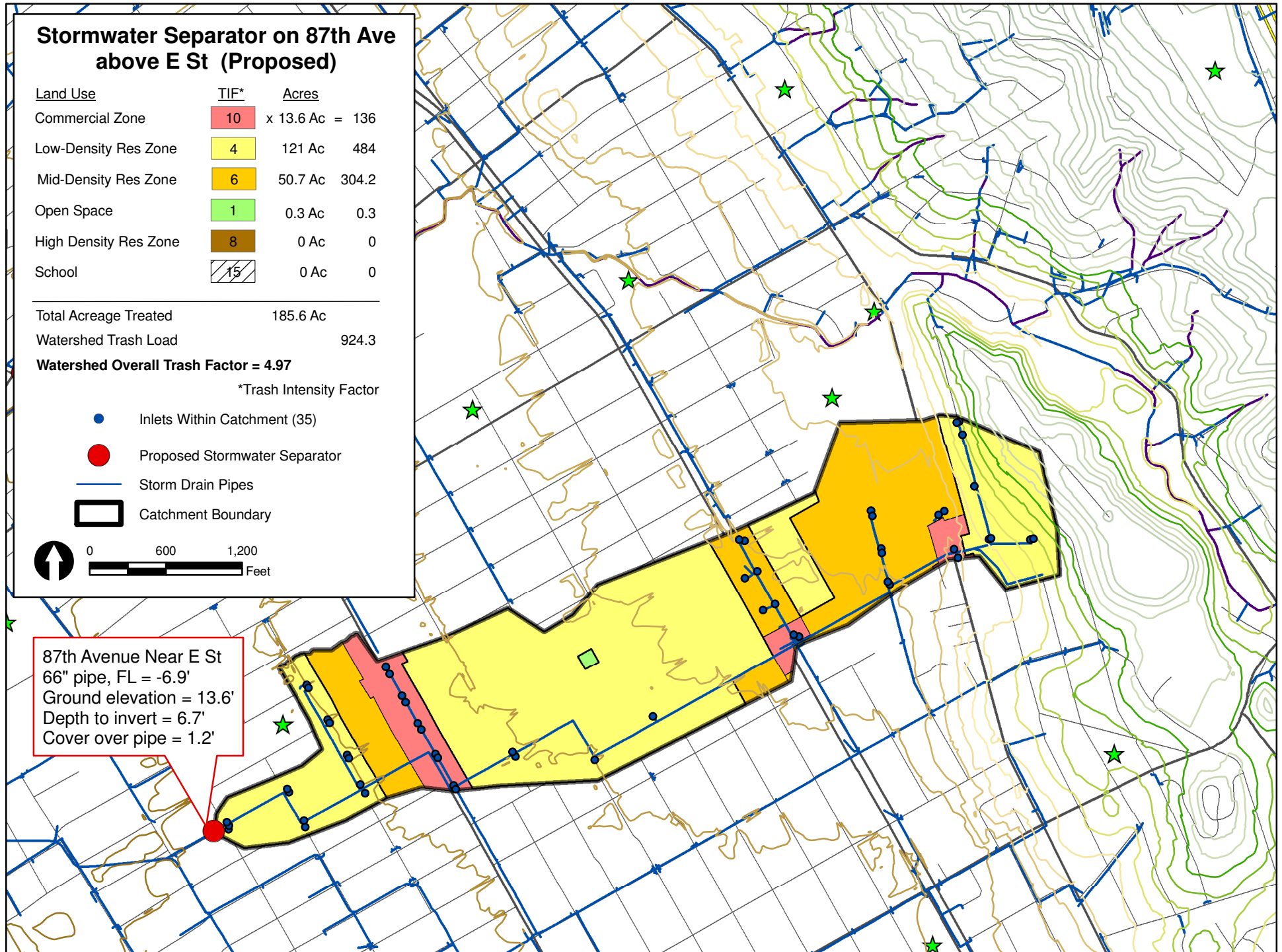
Watershed Overall Trash Factor = 4.97

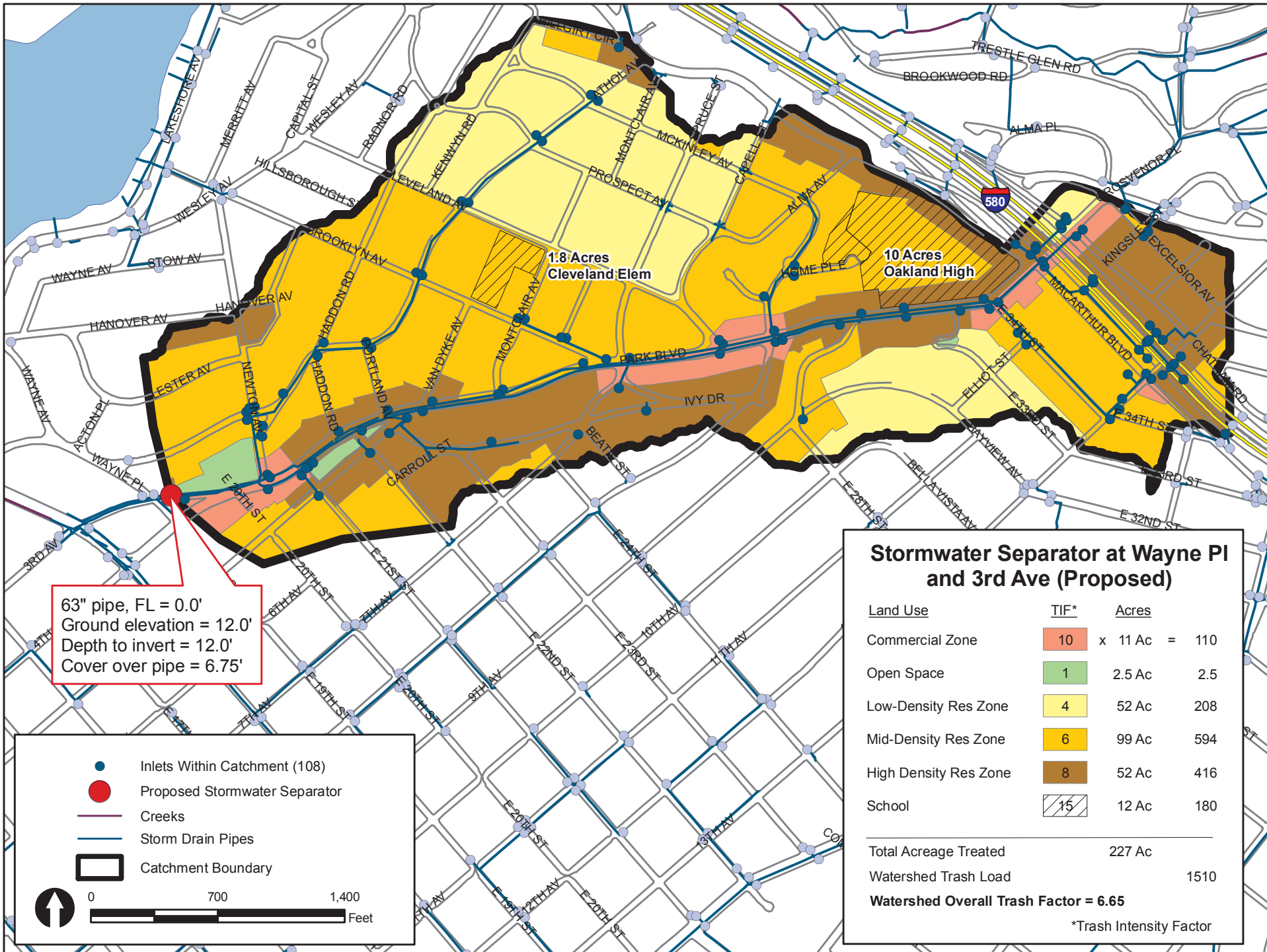
*Trash Intensity Factor

- Inlets Within Catchment (35)
- Proposed Stormwater Separator
- Storm Drain Pipes
- Catchment Boundary



87th Avenue Near E St
 66" pipe, FL = -6.9'
 Ground elevation = 13.6'
 Depth to invert = 6.7'
 Cover over pipe = 1.2'





63" pipe, FL = 0.0'
 Ground elevation = 12.0'
 Depth to invert = 12.0'
 Cover over pipe = 6.75'

- Inlets Within Catchment (108)
- Proposed Stormwater Separator
- Creeks
- Storm Drain Pipes
- Catchment Boundary

0 700 1,400 Feet

Stormwater Separator at Wayne PI and 3rd Ave (Proposed)

Land Use	TIF*	Acres	
Commercial Zone	10	11 Ac	= 110
Open Space	1	2.5 Ac	2.5
Low-Density Res Zone	4	52 Ac	208
Mid-Density Res Zone	6	99 Ac	594
High Density Res Zone	8	52 Ac	416
School	15	12 Ac	180
Total Acreage Treated		227 Ac	
Watershed Trash Load			1510
Watershed Overall Trash Factor = 6.65			
*Trash Intensity Factor			