



OAKLAND UNIFIED  
SCHOOL DISTRICT

Community Schools, Thriving Students

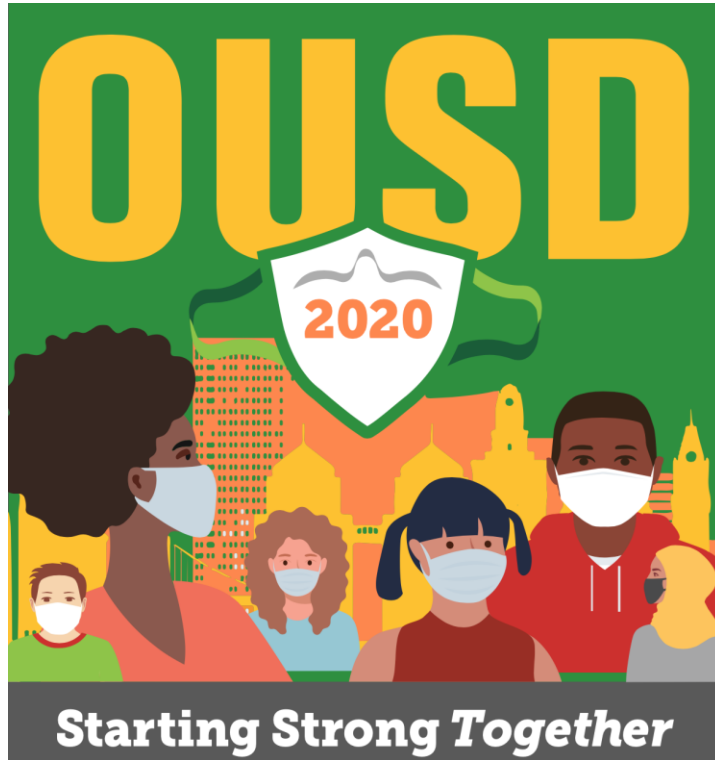
# Superintendent Report



**iam** OUSD

Sept 23, 2020

# Superintendent report overview



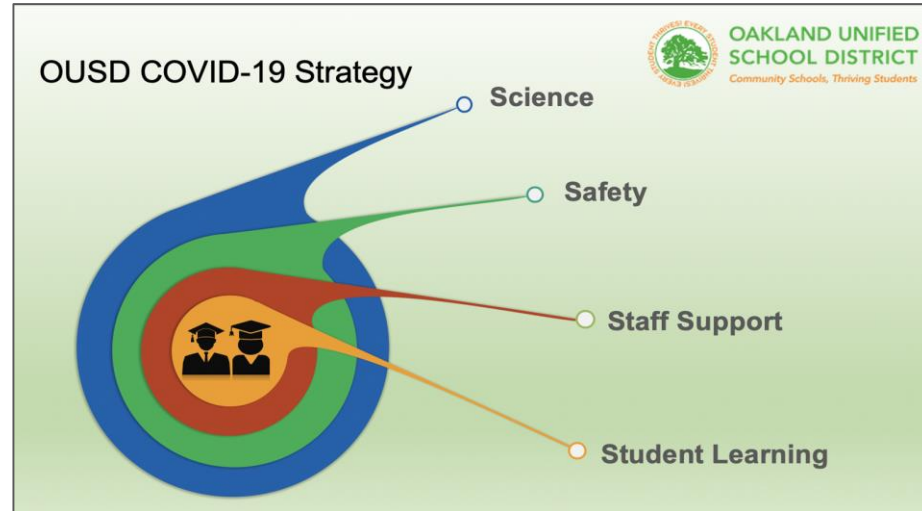
- ❖ Highlights from Schools
- ❖ Enrollment & Attendance Update
- ❖ Tech Distribution Update
- ❖ Learning Hub Update
- ❖ 2020-23 Strategic Plan

# Mission

Oakland Unified School District (OUSD) will build a Full-Service Community District focused on high academic achievement while serving the whole child, eliminating inequity, and providing each child with excellent teachers, every day.

# Vision

All OUSD students will find joy in their academic experience while graduating with the skills to ensure they are caring, competent, fully-informed, critical thinkers who are prepared for college, career, and community success.



# Highlights from the first weeks of school



# Enrollment & Attendance Updates

# Enrollment update

Grade	Sept 14 2020	Projection	Diff from Projection
K	2,679	3,047	-368
6	2,231	2,132	+99
9	2,144	2,362	-218
<b>All Grades*</b>	35,306	35,731	-425

*\*The "All Grades" numbers above include general education and special education students. The enrollment and projections numbers for K, 6, and 9 exclude special education students classified as Special Day Class (SDC) because the District does not project SDC students by grade.*

# Preliminary attendance results\* (Aug 10-Sep 15)

Grade level	All Students	ELL	New-comer	SPED	Unhoused	Foster Youth	African American	Latino	Asian	White
<b>TK-5</b> (avg enrollment)	94% (18216)	93% (5851)	90% (1395)	91% (2390)	81% (166)	88% (42)	89% (3572)	93% (7651)	96% (2350)	98% (2458)
<b>6-8</b> (avg enrollment)	94% (6824)	92% (1862)	89% (402)	91% (1185)	84% (86)	84% (45)	90% (1515)	94% (3270)	97% (690)	98% (694)
<b>9-12</b> (avg enrollment)	83% (9687)	79% (2631)	77% (1002)	77% (1553)	74% (473)	69% (90)	81% (2470)	80% (4463)	93% (1215)	91% (804)

# Family Learning Supports

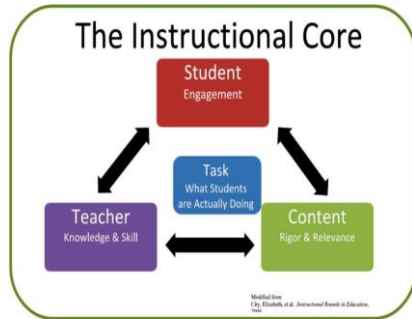
- Technology
- Learning Hubs



# Staff Devices Improving Quality of Distance Learning

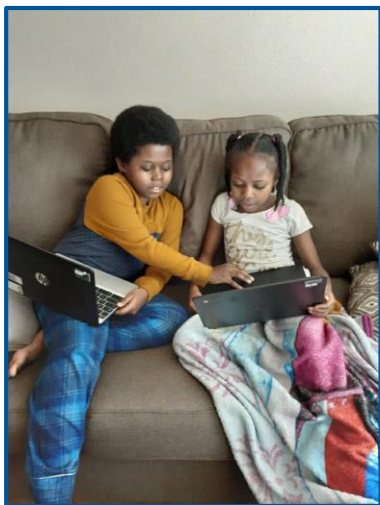
## Surface 3 Laptop (PC device)

- More robust processor that allows for fuller use of Zoom platform and other learning software.
- Touch Screen that allows for differentiation for diverse learners
- Aligns with current support infrastructure and staffing
- Aligns with our CTE program needs in high school
- SPED Devices are different based on need for CD/DVD drive



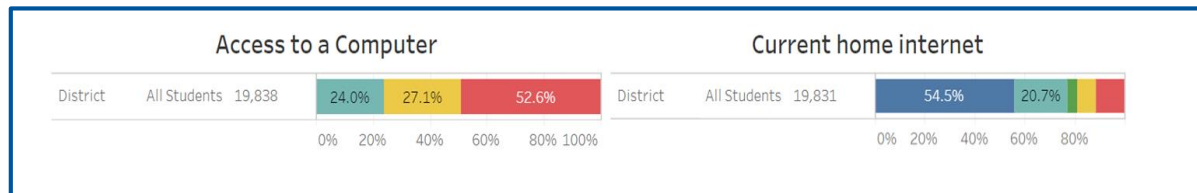
Classroom Instruction	Direct Student Supports
Teachers (OEA) <ul style="list-style-type: none"> <li>• Paraeducators</li> <li>• Instructional Support Specialists</li> <li>• Instructional Assistants</li> </ul>	Counselors Speech Language Pathologists (MOU) Psychologists (MOU) Social workers (MOU)

# Aligning data systems



## Milestones Reached:

- **Data link between OUSD Student Information System and Oakland Undivided Campaign**
  - Devices distributed can align to student needs in IEP
  - Accurate lists of students for outreach for the Tech Check Survey
  - Deeper engagement at sites to reach students to update status
- **28,500 chromebooks and 9,500 hotspots to get all scholars online**



School	Total Enrollment	Projected FRL#	Checked-out Computer in Aeries -- All Device	Checked-out Computer in Aeries -- OU Only	Checked-out Hotspots in Aeries--All Device	Checked-out Hotspots in Aeries--OU Only	Total Hotspots to school	Excess Inventory -- All Device	Excess Inventory -- OU Only
<b>Total</b>	35,892	24,855	14,225	2,399	5,781	2,012	8,423	2,671	6,197



# Supporting Families Gain Access

## Bret Harte Middle School

1. **25 Kids Absent of 560 each day online** with an OUSD checked out device, OU computer, and Hotspot
  
1. Engaging families that have not completed the Tech Check Survey
  - a. Messaging the 220 families to finish the Tech Check Survey
    - i. Email
    - ii. Talking Points
  - b. **Advisory Teacher** will check in with students in classes.
  - c. **Individual Outreach** to Families

## Castlemont High School

60 students that have not enrolled and on the No Show list.

60 Students that they have **NOT** been able to confirm they have devices but student have been showing up for distance learning periodically.

Supports the school identified need:

- 1) Mam speaking staff to support communication with families through phone calls..
- 2) Home visits for families that they cannot connect with but have an address.

[From Teaching to Tech Support: Helping Oakland Students Through IT Woes](#)

# Learning hubs and other learning supports

---

## Learning Hubs

City of Oakland/OUSD/CBO partnerships to provide full day academic and enrichment support program at three initial City Park and Rec sites (DeFremery, Carmen Flores, Jinkins, Peralta Hacienda; Spanish Speaking Citizens Foundation in planning)

## Pods

Partnerships with community organizations to provide homework and enrichment programs (e.g., Oakland Housing Authority-virtual, other partnerships and sites in planning)

## Virtual Tutoring

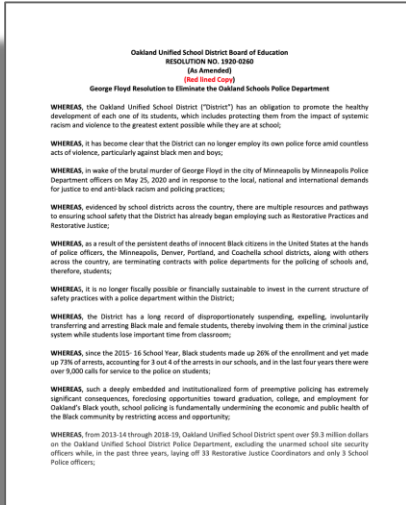
Partnership with Oakland Ed Fund. Volunteers matched with teachers (classroom Zoom Assistants) and with individual students (tutoring). 60 volunteers matched with nearly 240 more in process.

# Safety Plan Update



# The Opportunity

## George Floyd Resolution



Eliminate OUSD school police department and partner with community in reimagining a transformative vision for school safety to create a safe, healthy and welcoming school environments and develop a new district-wide safety plan aligned with that vision.



# Creating a Thoughtful & Inclusive Process (draft)

## Co-Conveners & Facilitators

-OUSD and BOP  
-Sangita Kumar, Be the Change  
-Greg Hodge, Khepera  
-Forward Change

- Provide leadership & facilitation
- Provide logistical and writing support
- Plan the Design Team and structure & design process for

working groups

## Design Team

OUSD, BOP, Facilitators, and additional community and OUSD representatives

- Develop principles of engagement
- Identify the key components of the Safety Plan
- Develop strategies & recommendations

## Listening/Working Groups

Broader constituent participation including students, principals, teachers, community partners

- Develop key components of the plan such as: 3 year budget, Anti-Bias Training, New or Updated Job Descriptions, Mental Health Response, etc.)

## Learning Partners

Leaders in the field to support the Design Team and Working Group's learning

- Provide content expertise and learning opportunities for the Core Design Team and the Working Groups

## Focus Groups/Key Interviews, etc.

- Provide in additional feedback and engagement

# Timeline for Developing the Safety Plan

July	August	September	October	November	December
<p><b>Pre-Planning</b></p> <ul style="list-style-type: none"> <li>★ Held Initial meetings with OUSD Staff and BOP Leadership</li> <li>★ Identified facilitators</li> </ul>	<p><b>Forming the Teams</b></p> <ul style="list-style-type: none"> <li>★ Held Meetings with OUSD and BOP leaders and Facilitators</li> <li>★ Started Defining principles of partnership and design process</li> <li>★ Initial Update to the Board of Education (BOE) [Aug 26]</li> </ul>	<p><b>Planning Sessions</b></p> <p>Identify key components of the plan</p> <p>Develop and begin the process for the working groups</p>	<p><b>Planning Sessions</b></p> <p>Working Groups continue to work on components of the plan</p> <p>Progress report to BOE [Oct 14]</p>	<p><b>Planning Sessions</b></p> <p>Working groups complete their recommendations</p> <p>Design Team finalizes a draft plan</p> <p>First reading of draft plan by BOE [Nov 12]</p>	<p><b>Finalize the Plan</b></p> <p>Finalize Plan</p> <p>Second reading and vote on plan by the BOE [Dec 9]</p>





# Quality Schools in Every Neighborhood!



**OAKLAND UNIFIED  
SCHOOL DISTRICT**  
*Community Schools, Thriving Students*

1000 Broadway, Suite 300, Oakland, CA 94607

[www.ousd.org](http://www.ousd.org)



@OUSDnews