

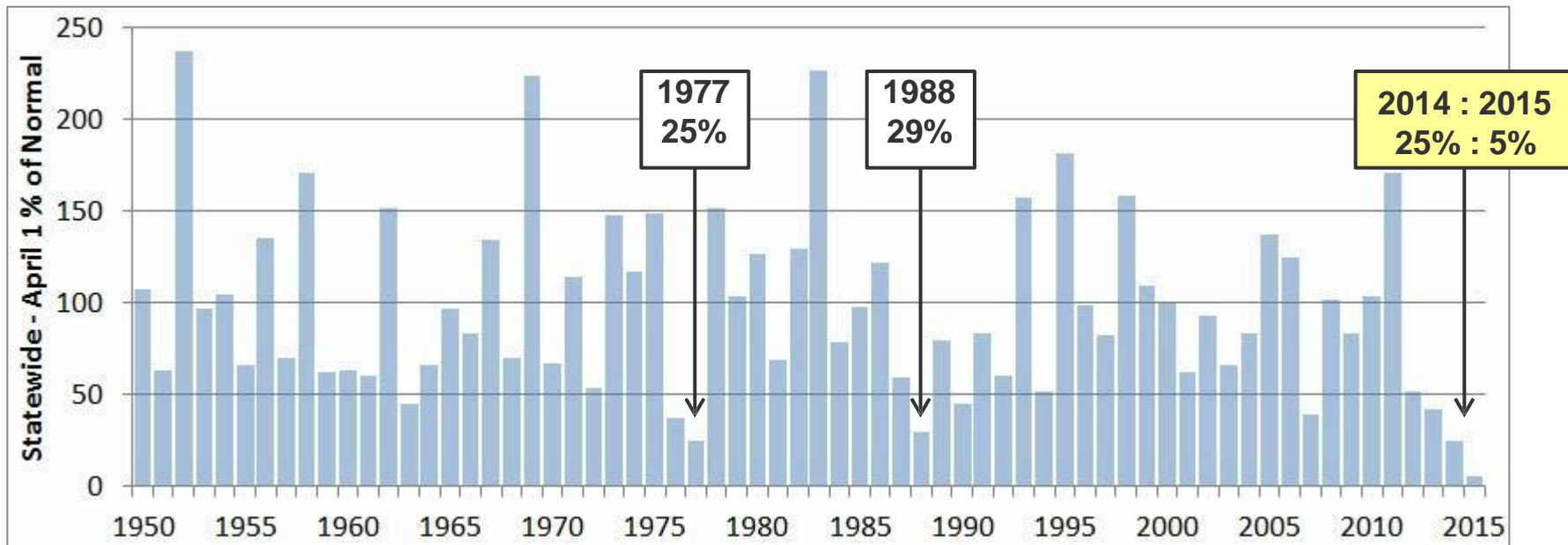


# **Water Conservation Briefing**

City of Oakland  
July 14, 2015

# California Water Supply

## April 1 Snow Survey - Historic Look



# 2015 State Drought Actions



April 1-

## Governor's Emergency Executive Order

- 25% statewide reduction
- SWRCB Actions

May 5 – State Water Board

- Prohibitions on water use
- Water agency mandates
- Monthly reporting



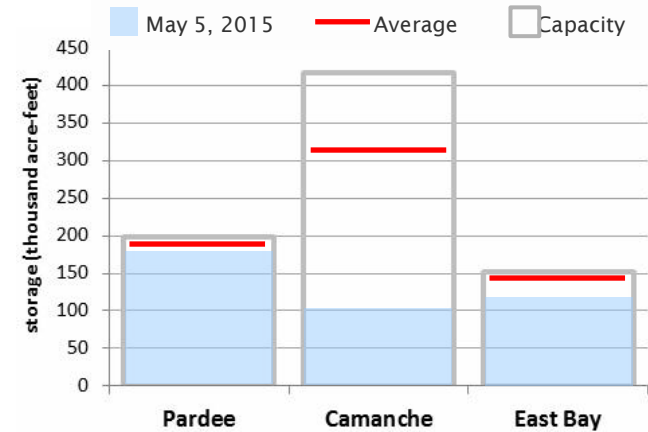
Michael Macor (SF Chronicle)

# Current Water Supply

## Reservoir Storage



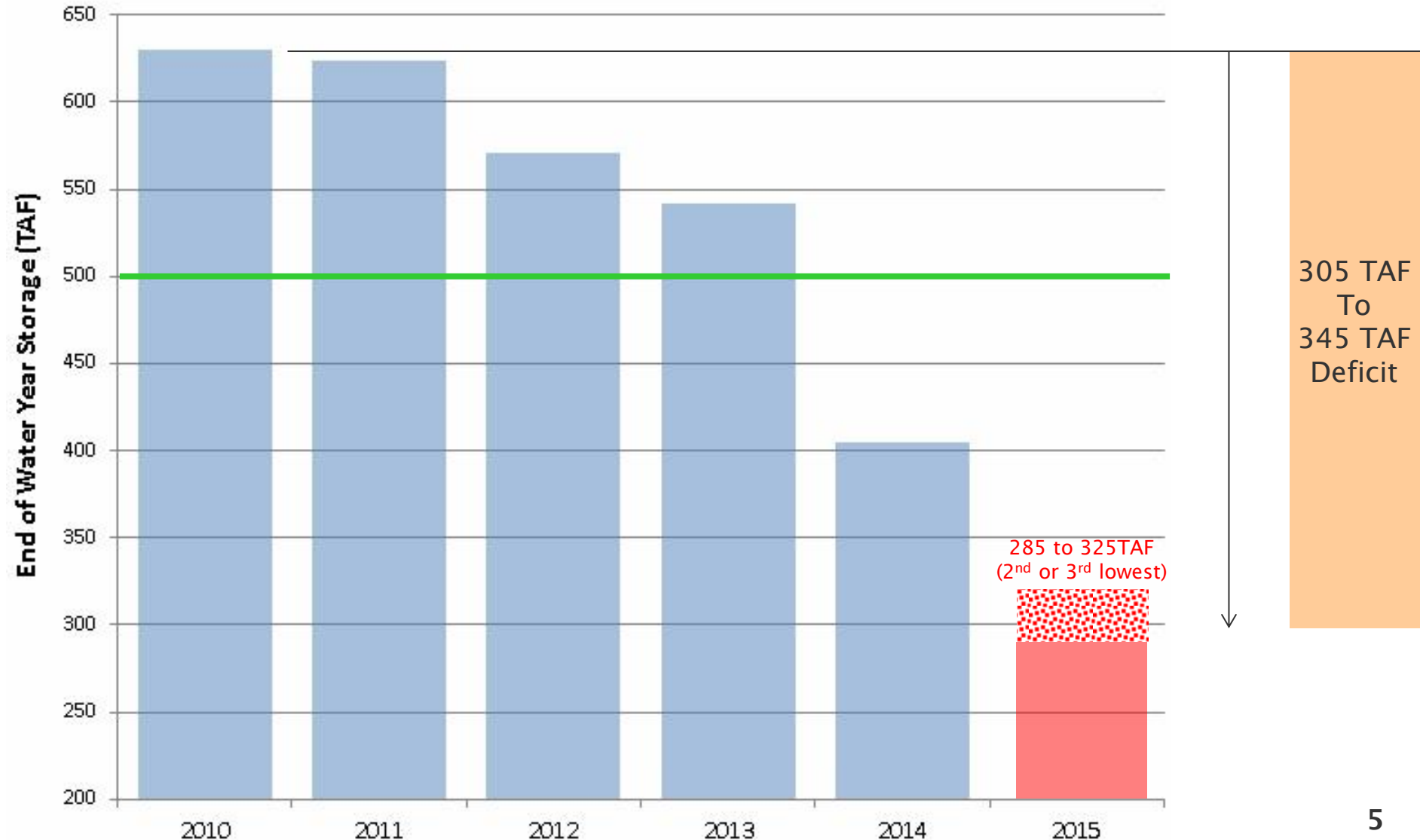
**Total System Storage**  
**382,050 acre-feet**  
**(58% of avg, 50% of capacity)\***



\* 6/30/2015

# Water Supply Projections

## 4 Year Storage Decline



# The 2015 Drought Plan



Supplemental Supply

+



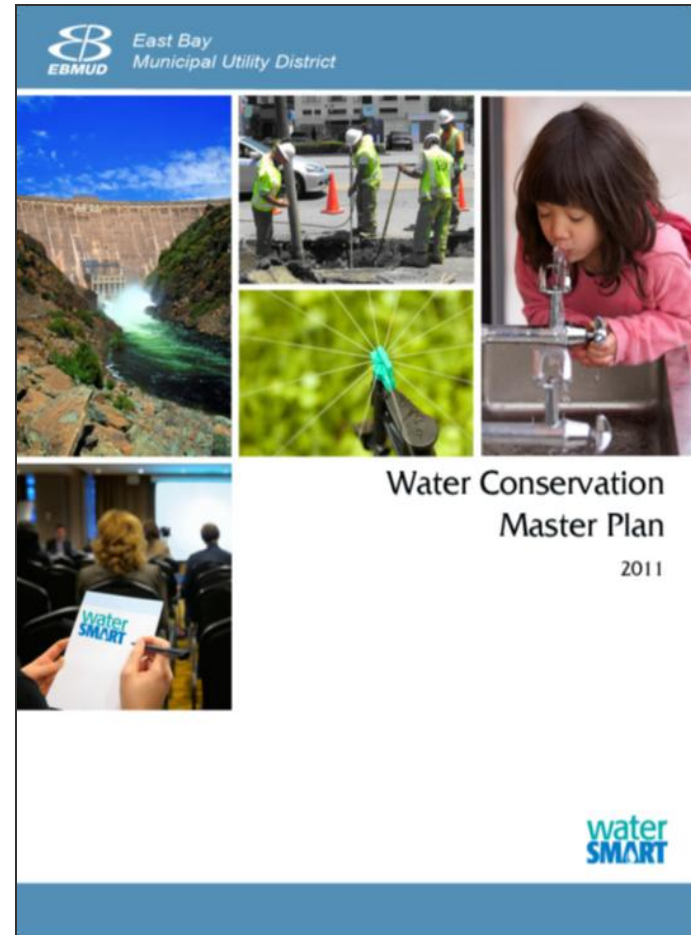
Customer Rationing

**A Community Effort  
to Manage the Drought!**

# 2015 EBMUD Drought Actions



- Water Shortage Emergency –Stage 4 Drought
- Staged System of Drought Rates
- 20% community-wide reduction goal
- Purchase of additional water
- Prohibitions on water use
- Critical Drought Action Plan
  - Expand Outreach and Education
  - Expand Conservation Response



# Mandatory District-wide 20% Demand Reduction Goal



- ✓ **District-wide** savings goal
- ✓ Community effort and everyone must step up
- ✓ Use is **not** based on individual water allocations
- ✓ Based on calendar year 2013
- ✓ Focus is on outdoor irrigation
- ✓ Penalties for high excessive use single-family residential customers who are not cutting back





# EBMUD Section 28 Regulation Water Use Restrictions



- Watering of outdoor landscapes that cause excess runoff and no more than 2 days per week
- Using hose to wash vehicles, boats, trailers, aircraft without shut-off nozzle
- Washing down driveways and sidewalks
- Use of potable water in fountains or water features unless it is recirculated
- Flushing of sewers or hydrants (except for health & safety, operational need)

# Section 28 – State Prohibitions Added



## New State Prohibitions Added to Section 28

*Potable water use to outdoor landscapes during and up to 48 hours after measurable rainfall.*

*Serving of drinking water other than by request at eating or drinking establishments*

*Operators of hotels and motels to offer option of choosing not to launder towels and linens daily.*

*Using potable water for irrigating ornamental turf on public street medians is prohibited.*

Irrigating turf and ornamental landscape permitted no more than two days each week, not on consecutive days and ***before 9 a.m. and after 6 p.m.***

# EBMUD Section 28 Drought Regulations Enforcement



## Enforcement -

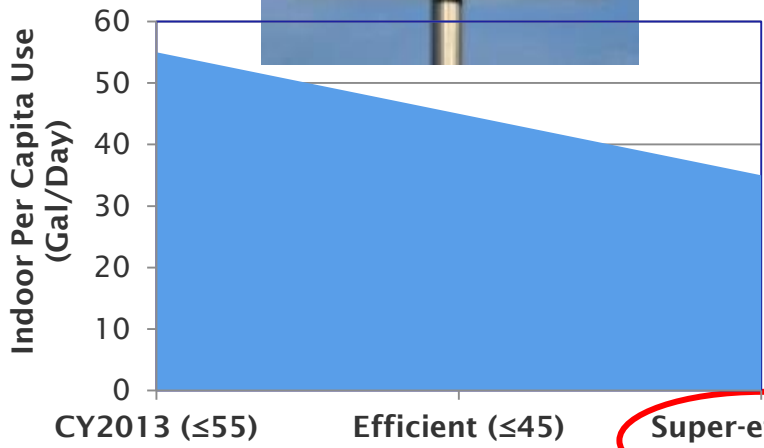
- Water Waste Procedure
  - Field Investigations, Community
- Process for noncompliance:
  - Customer contact
  - Written warning
  - Flow restriction
  - Discontinue service
- Associated water waste and monitoring charges
- Misdemeanor punishable by fine of up to \$1000



# Single-Family & Multi-Family Residential Water Use



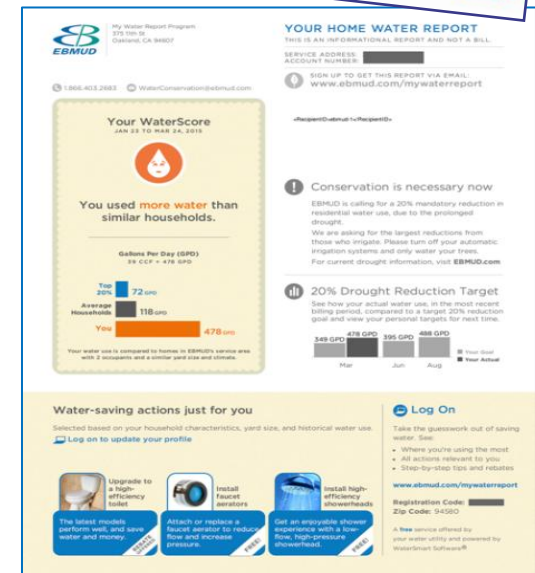
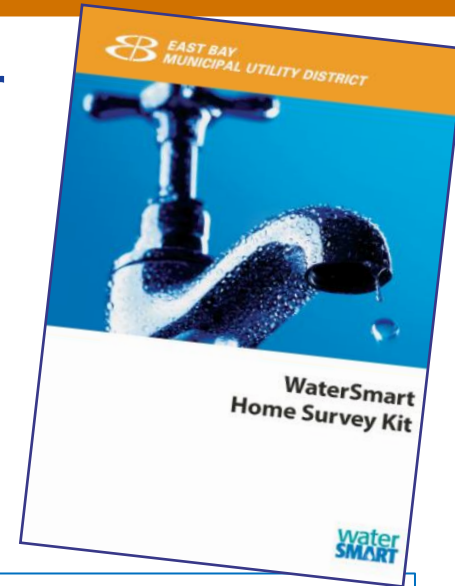
*Strive for*



# Water & Information Management: Customer Engagement Initiatives



- 💧 Online Home Water Works calculator
- 💧 Home Water Report expansion to 326,000 single-family customers
- 💧 Landscape irrigation water budgets
- 💧 Expanded distribution of home survey kits
- 💧 WaterSmart Center tips, videos, tutorials



# Education and Outreach



- WaterSmart Gardener Program
- Nursery advertising & forums
- Landscape Advisory Committee
- Green landscaper training
- Expanded school education
- Outreach to hotels/motels and restaurants
- WaterSmart Business Certification
- Community presentations & landscaping workshops



# Education and Outreach (Cont.)



- 💧 Partnering with community based organizations
- 💧 Services for low-income, senior housing (e.g. Rising Sun)
- 💧 Services for property managers, homeowner associations
- 💧 Key contacts with city & county staff (e.g. public works, parks, etc.)



**CALIFORNIA**  
DROUGHT NEEDS YOU.



Rising Sun Energy Center's California Youth Energy Services (CYES) program trains and employs local youth to become 'Energy Specialists' who serve their local communities with Green House Calls (GHC). At each GHC, Energy Specialists install energy- and water-saving devices and provide personalized recommendations and education for further savings in the home—all at no cost to residents.

*Eden Council for Hope and Opportunity*

HOME ABOUT PROGRAMS NEWS & EVENTS WAYS TO GET INVOLVED RESOURCES CONTACT

A Comprehensive Housing Counseling Agency

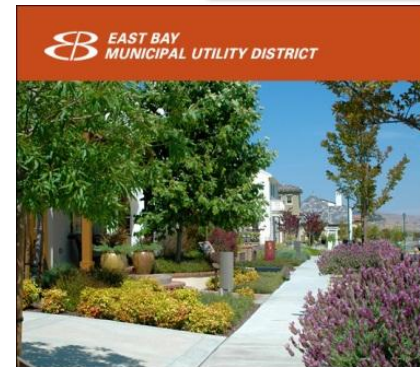


Search

# FY15-16 Conservation Incentives



- Expanded \$2M budget for rebates
- Expanded free device distribution w/cities - *New*
- Expanded incentive/promotion of commercial technology upgrades
- Pilot “Pay as You Save” On-bill Financing - *New*



Up to \$ 2,500 Rebate  
Single-Family Residential  
Up to \$20,000 Rebate  
Commercial & Multi-family  
**For Lawn Conversion  
& Irrigation Upgrades**

Effective January 1, 2013





# Regulations Enforcement



- Water Savings Team Patrol
- Outdoor water use restrictions (Section 28)
- Water waste monitoring & enforcement
- Excessive use and theft penalties
- Restaurant & hotel water saving practices
- New service plan check reviews (



# Supply Side Conservation



- Expanded water loss control program monitoring and reporting
- Updated District facility water audits & efficiency plans
- Fixed Network Leak Detection Pilot Study (Kensington & Oakland)
- Distribution Metered Areas (Kensington & Danville)

Real Loss



Apparent Loss



# Recycled Water



- 2014 - 8.1 mgpd
- By 2020, look to expand to 20 mgpd
- Expansion of:
  - San Ramon Valley Project
  - East Bayshore Project
- Commercial Truck program
- Pilot a residential fill station program



# Drought Resources



# DROUGHT HELP CENTER

- Education Center
- Rebates
- Program & Services
- Educational Materials
- Free Devices
- Workshops
- Financial Assistance
- Customer Support

