

FILED
OFFICE OF THE CITY CLERK
OAKLAND

18 FEB -1 PM 4:41



Agenda Memo

CITY HALL - ONE FRANK H. OGAWA PLAZA, 2ND FLOOR - OAKLAND - CALIFORNIA - 94612

FROM:

DAN KALB
Councilmember District 1

(510) 238-7001
E-mail: dkalb@oaklandnet.com

TO: Public Works Committee

SUBJECT: INFORMATIONAL REPORT AND PRESENTATION PROVIDING AN OVERVIEW AND STATUS UPDATE ON DETAILS OF EAST BAY COMMUNITY ENERGY (EBCE)

DATE: February 13, 2018

Dear Members of the Public Works Committee,

Councilmember Kalb Recommends That the Public Works Committee receives this informational report:

RECEIVE AN INFORMATIONAL REPORT AND PRESENTATION PROVIDING AN OVERVIEW AND STATUS UPDATE ON DETAILS OF EAST BAY COMMUNITY ENERGY (EBCE)—ALAMEDA COUNTY'S NEW PUBLICALLY-GOVERNED POWER SUPPLIER, WITH THE GOAL TO PROVIDE BUSINESSES AND RESIDENTS CLEANER, GREENER ELECTRICITY AT LOWER RATES—BEFORE ITS OFFICIAL CUSTOMER LAUNCH IN 2018.

For questions regarding this report, please contact Olga Bolotina at obolotina@oaklandnet.com

Thank you!

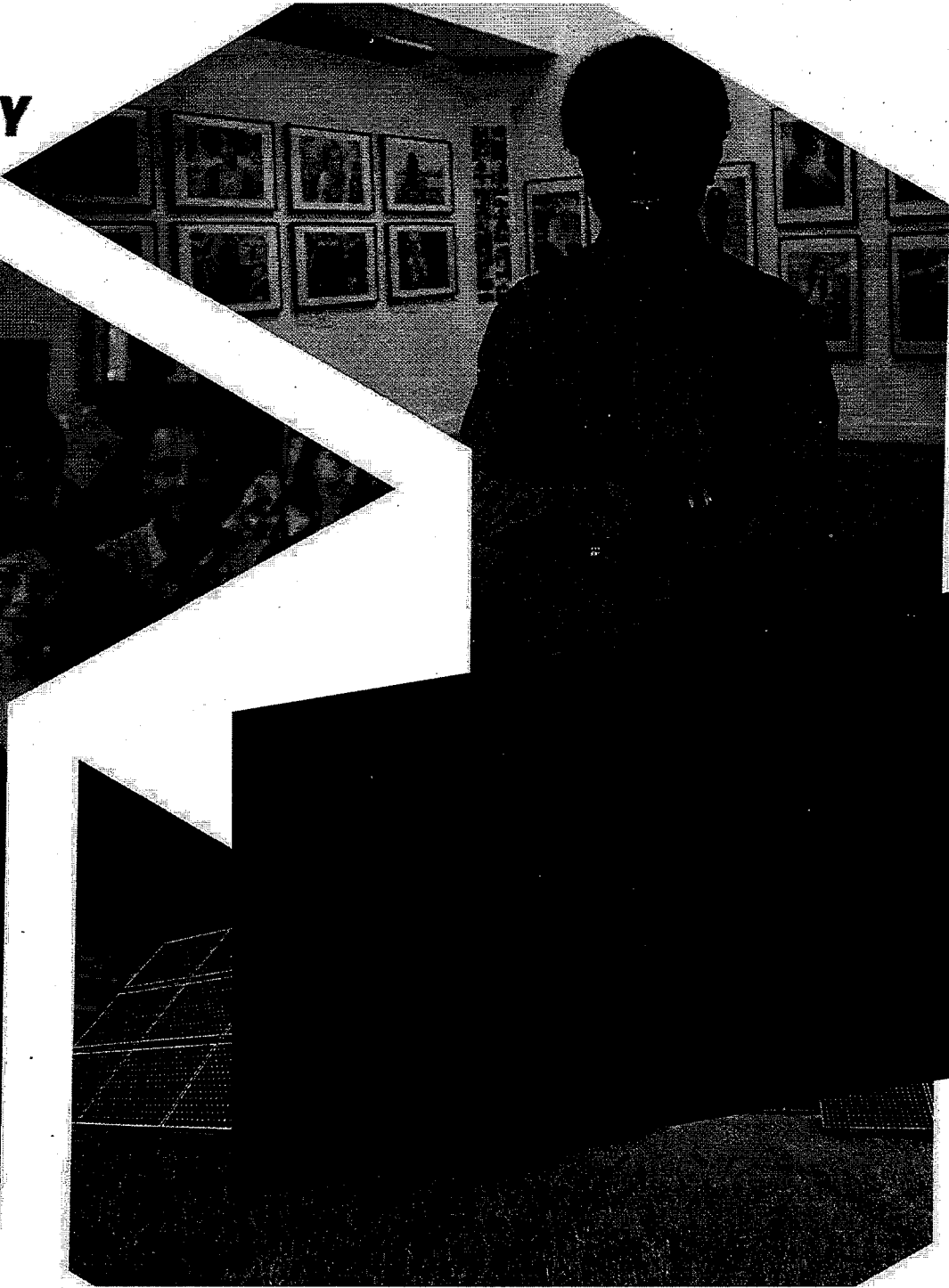
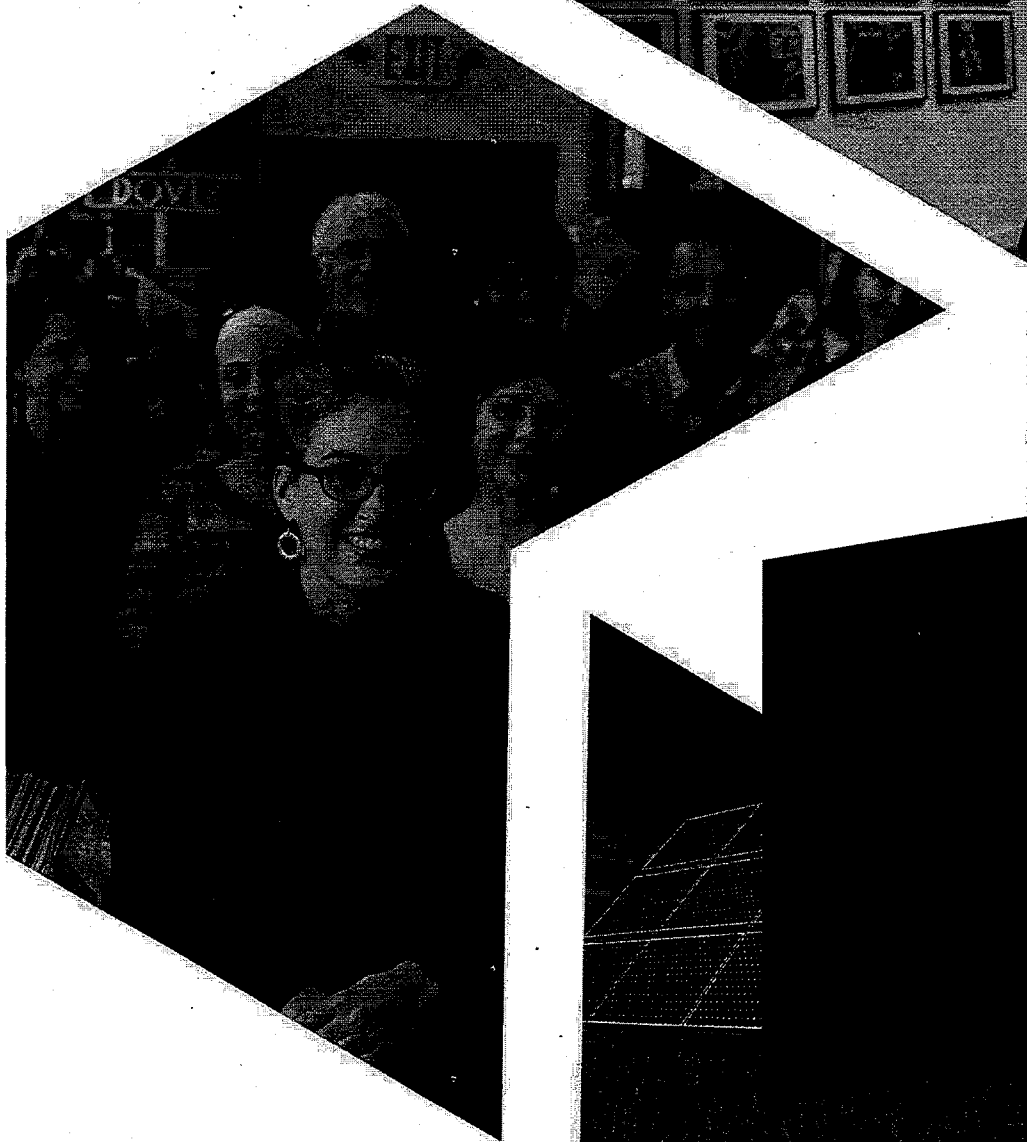
Respectfully submitted,

A handwritten signature in cursive script that reads "Dan Kalb".

Councilmember Kalb



**EAST BAY
COMMUNITY
ENERGY**



FILED
OFFICE OF THE CITY CLERK
OAKLAND

18 FEB - 1 PM 4:41

WHAT IS EBCE?



East Bay Community Energy (EBCE) is our new local power supplier committed to providing Alameda County with cleaner, greener electricity at lower rates. EBCE will reinvest earnings back into the community to create local green energy jobs, local energy programs, and clean power projects.

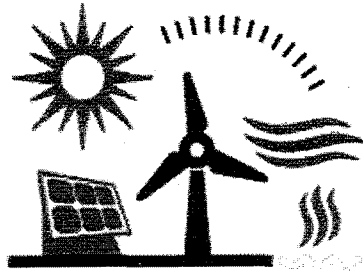
HISTORY IN BRIEF

- EBCE began as an initiative of the County of Alameda which commissioned an independent feasibility study in 2015. The study showed that EBCE could save Alameda County customers money while reducing energy-related carbon emissions.
- EBCE was formed as a Joint Powers Agency in January 2017 and is led by a Board of Directors composed of representatives from 11 participating cities and unincorporated areas in the County.
- Current members of EBCE include:

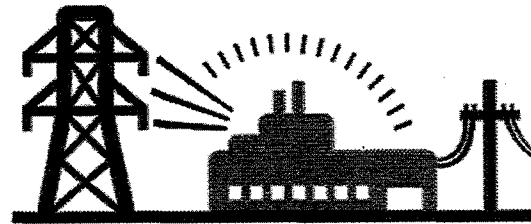
City of Albany
City of Berkeley
City of Dublin
City of Emeryville
City of Fremont
City of Hayward

City of Livermore
City of Oakland
City of Piedmont
City of San Leandro
City of Union City
County of Alameda

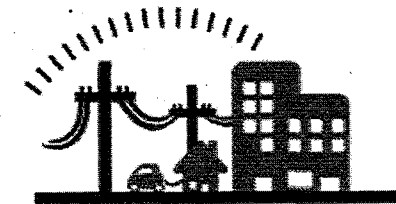
HOW IT WORKS



SOURCE
EBCE



DELIVERY
PG&E



CUSTOMER
YOU

- EBCE is a community choice energy service enabled by CA State Law
- EBCE sources electricity from cleaner energy sources.
- PG&E delivers the electricity, maintains the lines, and handles customer billing.
- Residents and businesses receive cleaner energy at lower rates without having to do a thing!

WHAT ARE MY OPTIONS?



lower carbon

than PG&E

lower rates

than PG&E



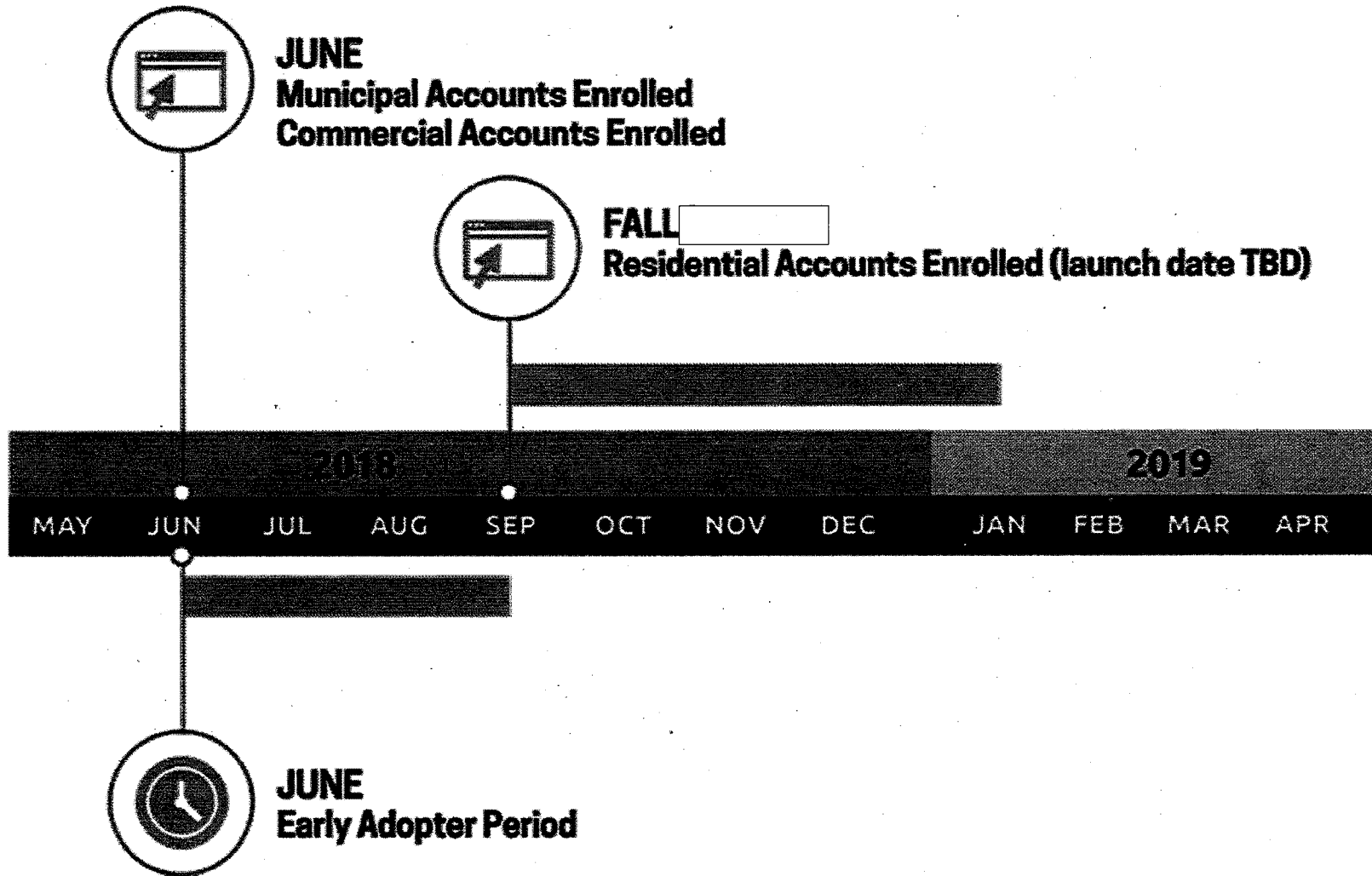
100%

clean energy

price premium

slightly higher rate

WHEN WILL EBCE SERVICE BEGIN?



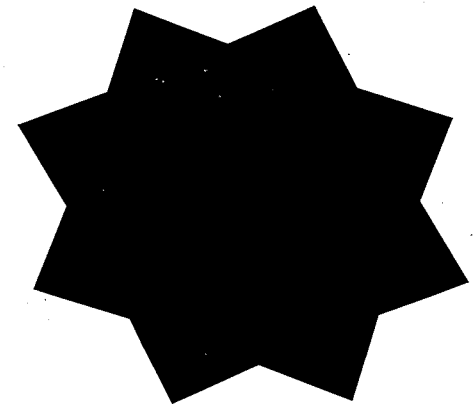
LATEST EBCE UPDATES

- Implementation Plan certified by CPUC
- Core services put in place
 - Data & Billing Management
 - Banking and Credit Services
 - Wholesale Energy Services
- Building the Staff Team
- Phase 1 Marketing and Outreach Underway
- Local Business Development Plan
 - Energy cost analysis
 - Development of draft chapters
 - Comment period provided for public and stakeholders

WHAT'S NEXT?

Program Implementation and Launch of Service

- Continue building the EBCE team
- Policy and service development
- Key Account outreach
- Power procurement and rate setting
- Call center goes live
- Phase 1 customer noticing begins in April
- Begin serving municipal, commercial and
Program Launch
early adopter electric customers in June!





THANK YOU!

For more information:



EBCE.org



[East Bay Community Energy](https://www.facebook.com/EastBayCommunityEnergy)



[@PoweredbyEBCE](https://twitter.com/PoweredbyEBCE)



info@EBCE.org