

KEYNOTES

- 1 PROPOSED SAFEWAY PROJECT
- 2 SHOPS BUILDING
- 3 ROOFTOP PARKING
- 4 LOADING DOCK



PROJECT NAME



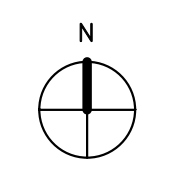
SAFeway
6310 COLLEGE AVENUE
OAKLAND, CA 94618
STORE #2870

CURRENT OWNER: SAFEWAY
 TENANT: SAFEWAY
 STORE NUMBER: 2870

CONTACT PERSON:
 TODD PARADIS
 5918 STONERIDGE MALL ROAD
 PLEASANTON, CA 94588-3229
 P) 925.467.2078
 F) 925.467.2861
 E-MAIL - Todd.Paradis@safeway.com

ASSESSOR'S PARCEL NUMBER: 048A707000101

CONSULTANTS



NOT FOR CONSTRUCTION

NO.	DATE	ISSUES AND REVISIONS	BY
01	12/13/12	STAFF REPORT	TV

DATE: 12/13/12
 DRAWN BY: TV

PROJECT NUMBER: 09-003
 SHEET TITLE: PROPOSED SITE PLAN

SHEET NUMBER: **A1.2**

ALL DRAWINGS AND WRITTEN MATERIAL APPEARING HEREIN CONSTITUTE ORIGINAL AND UNPUBLISHED WORK OF THE ARCHITECT AND MAY NOT BE DUPLICATED, USED OR DISCLOSED WITHOUT WRITTEN CONSENT OF THE ARCHITECT



KEYNOTES

- 1 (N) CURB CUT FOR VEHICULAR ACCESS
- 2 PEDESTRIAN PLAZA
- 3 PROPOSED BULB OUT
- 4 PROPOSED BUS STOP LOCATION
- 5 ACCESSIBLE PATH OF TRAVEL
- 6 PROPOSED STREET TREE
- 7 CART STORAGE
- 8 (N) VEHICULAR RAMP
- 9 RAMP TO PLAZA
- 10 BIKE RACK (2 BIKE SPACES PER RACK)
- 11 CUSTOMER ELEVATOR
- 12 CUSTOMER STAIRS
- 13 FREIGHT ELEVATOR
- 14 LONG TERM BIKE STORAGE (6)
- 15 SECURED STORMWATER TREATMENT VEGETATED BIOSWALE
- 16 CART CORRAL
- 17 COOLING TOWER
- 18 AC UNIT
- 19 TRANSFORMER
- 20 FILL
- 21 MECHANICAL UNIT SCREEN
- 22 (N) CURB CUT FOR TRUCK ACCESS
- 23 SMALL DELIVERIES LOADING ZONE
- 24 ELEVATOR MECHANICAL
- 25 OUTDOOR SEATING

PLAN LEGEND

- SAFEWAY
- SHOPS
- PLAZA
- TREES / LANDSCAPE



PROJECT NAME



**6310 COLLEGE AVENUE
OAKLAND, CA 94618
STORE #2870**

CURRENT OWNER: SAFEWAY
TENANT: SAFEWAY
STORE NUMBER: 2870

CONTACT PERSON:
TODD PARADIS
5918 STONERIDGE MALL ROAD
PLEASANTON, CA 94588-3229
P) 925.467.2078
F) 925.467.2861
E-MAIL - Todd.Paradis@safeway.com

ASSESSOR'S PARCEL NUMBER: 048A707000101

CONSULTANTS

NOT FOR CONSTRUCTION

NO.	DATE	ISSUES AND REVISIONS	BY
01	12/13/12	STAFF REPORT	TV

DATE: 12/13/12
DRAWN BY: TV

PROJECT NUMBER: 09-003
SHEET TITLE:

PRELIMINARY GROUND FLOOR PLAN

SHEET NUMBER: **A2.1**

ALL DRAWINGS AND WRITTEN MATERIAL APPEARING HEREIN CONSTITUTE ORIGINAL AND UNPUBLISHED WORK OF THE ARCHITECT AND MAY NOT BE DUPLICATED, USED OR DISCLOSED WITHOUT WRITTEN CONSENT OF THE ARCHITECT

12/13/2012 11:24:53 AM



KEYNOTES

- 1 (N) CURB CUT FOR VEHICULAR ACCESS
- 2 PEDESTRIAN PLAZA
- 3 PROPOSED BULB OUT
- 4 PROPOSED BUS STOP LOCATION
- 5 ACCESSIBLE PATH OF TRAVEL
- 6 PROPOSED STREET TREE
- 7 CART STORAGE
- 8 (N) VEHICULAR RAMP
- 9 RAMP TO PLAZA
- 10 BIKE RACK (2 BIKE SPACES PER RACK)
- 11 CUSTOMER ELEVATOR
- 12 CUSTOMER STAIRS
- 13 FREIGHT ELEVATOR
- 14 LONG TERM BIKE STORAGE (6)
- 15 SECURED STORMWATER TREATMENT VEGETATED BIOSWALE
- 16 CART CORRAL
- 17 COOLING TOWER
- 18 AC UNIT
- 19 TRANSFORMER
- 20 FILL
- 21 MECHANICAL UNIT SCREEN
- 22 (N) CURB CUT FOR TRUCK ACCESS
- 23 SMALL DELIVERIES LOADING ZONE
- 24 ELEVATOR MECHANICAL
- 25 OUTDOOR SEATING

PLAN LEGEND

- SAFEWAY
- SHOPS
- PLAZA
- TREES / LANDSCAPE



PROJECT NAME



**6310 COLLEGE AVENUE
OAKLAND, CA 94618
STORE #2870**

CURRENT OWNER: SAFEWAY
TENANT: SAFEWAY
STORE NUMBER: 2870

CONTACT PERSON:
TODD PARADIS
5918 STONERIDGE MALL ROAD
PLEASANTON, CA 94588-3229
P) 925.467.2078
F) 925.467.2861
E-MAIL - Todd.Paradis@safeway.com

ASSESSOR'S PARCEL NUMBER: 048A07000101

CONSULTANTS

NOT FOR CONSTRUCTION

NO.	DATE	ISSUES AND REVISIONS	BY
01	12/13/12	STAFF REPORT	TV

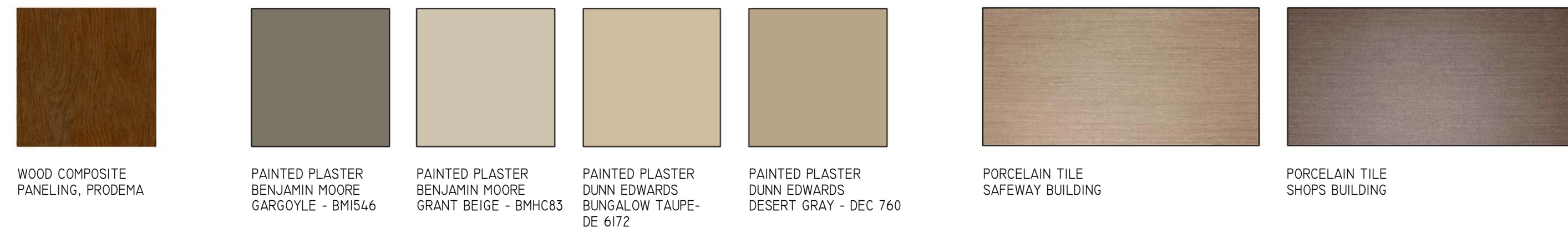
DATE: 12/13/12
DRAWN BY: TV

PROJECT NUMBER: 09-003
SHEET TITLE: PRELIMINARY PARKING LEVEL PLAN

SHEET NUMBER: **A2.2**

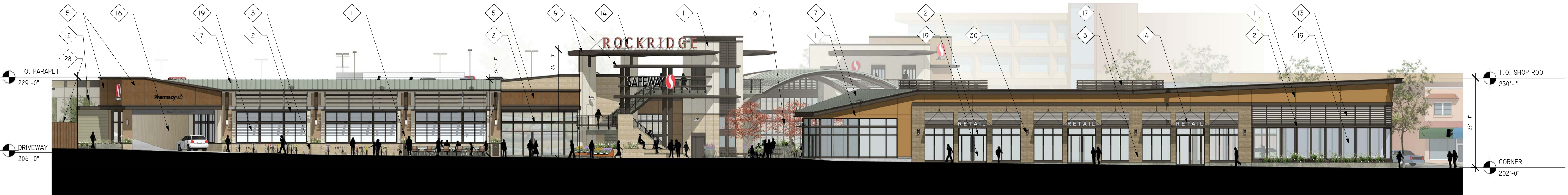
ALL DRAWINGS AND WRITTEN MATERIAL APPEARING HEREIN CONSTITUTE ORIGINAL AND UNPUBLISHED WORK OF THE ARCHITECT AND MAY NOT BE DUPLICATED, USED OR DISCLOSED WITHOUT WRITTEN CONSENT OF THE ARCHITECT

SAFeway MATERIALS PALETTE



KEYNOTES

- 1 PAINTED SMOOTH STUCCO
- 2 DARK ANODIZED ALUMINUM STOREFRONT / TYP
- 3 PORCELEIN TILE
- 4 METAL PANEL
- 5 WOOD COMPOSITE RAINSCREEN
- 6 PEDESTRIAN PLAZA
- 7 STANDING SEAM METAL ROOF
- 8 METAL LOUVERS
- 9 METAL PANEL CLAD AWNING
- 10 STEEL TRELLIS
- 11 LANDSCAPED SETBACK AND FENCING
- 12 NEW SCREEN TREES, SEE LANDSCAPE DRAWINGS
- 13 LOUVER SYSTEM
- 14 CUSTOM SIGNAGE
- 15 SIGNAGE T.B.D.
- 16 PARKING ENTRY / EXIT
- 17 METAL SCREEN
- 18 LINEAR PLANTER / BENCH
- 19 CLEAR GLAZING, TYP.
- 20 (E) POWER POLES
- 21 PTD OVERHEAD DOOR
- 22 GREEN SCREEN
- 23 SPLITFACED CMU
- 24 CMU BLOCK
- 25 CUSTOM PTD STEEL TRELLIS W/ LANDSCAPING
- 26 FIBER CEMENT BD. LAP SIDING
- 27 TRANSOM WINDOWS W/ SPANDREL GLAZING
- 28 10' HIGH NEIGHBOR FENCE
- 29 SMOOTH CONCRETE
- 30 SCONCE, TYP.



1 COLLEGE AVENUE ELEVATION
1/16" = 1'-0"



2 CLAREMONT AVENUE ELEVATION
1/16" = 1'-0"



3 CLAREMONT AVENUE ELEVATION
(CONTINUED)
1/16" = 1'-0"



PROJECT NAME



SAFEWAY
6310 COLLEGE AVENUE
OAKLAND, CA 94618
STORE #2870

CURRENT OWNER: SAFEWAY
TENANT: SAFEWAY
STORE NUMBER: 2870

CONTACT PERSON:
TODD PARADIS
5918 STONERIDGE MALL ROAD
PLEASANTON, CA 94588-3229
P) 925.467.2078
F) 925.467.2861
E-MAIL - Todd.Paradis@safeway.com

ASSESSOR'S PARCEL NUMBER: 048A707000101

CONSULTANTS

NOT FOR CONSTRUCTION

NO.	DATE	ISSUES AND REVISIONS	BY
01	12/13/12	STAFF REPORT	TV

DATE: 12/13/12
DRAWN BY: TV

PROJECT NUMBER: 09-003
SHEET TITLE

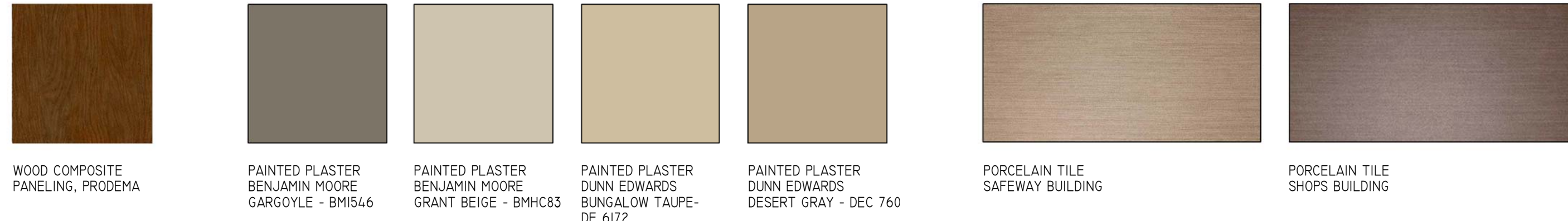
EXTERIOR ELEVATIONS

SHEET NUMBER

A3.1

ALL DRAWINGS AND WRITTEN MATERIAL APPEARING HEREIN CONSTITUTE ORIGINAL AND UNPUBLISHED WORK OF THE ARCHITECT AND MAY NOT BE DUPLICATED, USED OR DISCLOSED WITHOUT WRITTEN CONSENT OF THE ARCHITECT

SAFeway MATERIALS PALETTE



KEYNOTES

- 1 PAINTED SMOOTH STUCCO
- 2 DARK ANODIZED ALUMINUM STOREFRONT / TYP
- 3 PORCELEIN TILE
- 4 METAL PANEL
- 5 WOOD COMPOSITE RAINSCREEN
- 6 PEDESTRIAN PLAZA
- 7 STANDING SEAM METAL ROOF
- 8 METAL LOUVERS
- 9 METAL PANEL CLAD AWNING
- 10 STEEL TRELLIS
- 11 LANDSCAPED SETBACK AND FENCING
- 12 NEW SCREEN TREES, SEE LANDSCAPE DRAWINGS
- 13 LOUVER SYSTEM
- 14 CUSTOM SIGNAGE
- 15 SIGNAGE T.B.D.
- 16 PARKING ENTRY / EXIT
- 17 METAL SCREEN
- 18 LINEAR PLANTER / BENCH
- 19 CLEAR GLAZING, TYP.
- 20 (E) POWER POLES
- 21 PTD OVERHEAD DOOR
- 22 GREEN SCREEN
- 23 SPLITFACED CMU
- 24 CMU BLOCK
- 25 CUSTOM PTD STEEL TRELLIS W/ LANDSCAPING
- 26 FIBER CEMENT BD. LAP SIDING
- 27 TRANSOM WINDOWS W/ SPANDRELGLAZING
- 28 10' HIGH NEIGHBOR FENCE
- 29 SMOOTH CONCRETE
- 30 SCONCE, TYP.



PROJECT NAME



SAFeway
6310 COLLEGE AVENUE
OAKLAND, CA 94618
STORE #2870

CURRENT OWNER: SAFEWAY
TENANT: SAFEWAY
STORE NUMBER: 2870

CONTACT PERSON:
TODD PARADIS
5918 STONERIDGE MALL ROAD
PLEASANTON, CA 94588-3229
P) 925.467.2078
F) 925.467.2861
E-MAIL - Todd.Paradis@safeway.com

ASSESSOR'S PARCEL NUMBER: 048A707000101

CONSULTANTS

NOT FOR CONSTRUCTION

NO.	DATE	ISSUES AND REVISIONS	BY
01	12/13/12	STAFF REPORT	TV

DATE: 12/13/12
DRAWN BY: TV

PROJECT NUMBER: 09-003
SHEET TITLE: EXTERIOR ELEVATIONS

SHEET NUMBER: **A3.2**

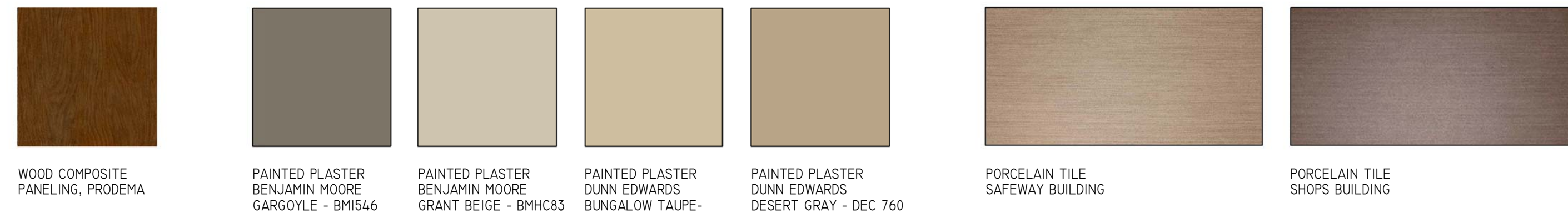
ALL DRAWINGS AND WRITTEN MATERIAL APPEARING HEREIN CONSTITUTE ORIGINAL AND UNPUBLISHED WORK OF THE ARCHITECT AND MAY NOT BE DUPLICATED, USED OR DISCLOSED WITHOUT WRITTEN CONSENT OF THE ARCHITECT



1 NORTH ELEVATION
1/16" = 1'-0"

12/13/2012 12:07:55 PM

SAFeway MATERIALS PALETTE



KEYNOTES

- 1 PAINTED SMOOTH STUCCO
- 2 DARK ANODIZED ALUMINUM STOREFRONT / TYP
- 3 PORCELEIN TILE
- 4 METAL PANEL
- 5 WOOD COMPOSITE RAINSCREEN
- 6 PEDESTRIAN PLAZA
- 7 STANDING SEAM METAL ROOF
- 8 METAL LOUVERS
- 9 METAL PANEL CLAD AWNING
- 10 STEEL TRELLIS
- 11 LANDSCAPED SETBACK AND FENCING
- 12 NEW SCREEN TREES, SEE LANDSCAPE DRAWINGS
- 13 LOUVER SYSTEM
- 14 CUSTOM SIGNAGE
- 15 SIGNAGE T.B.D.
- 16 PARKING ENTRY / EXIT
- 17 METAL SCREEN
- 18 LINEAR PLANTER / BENCH
- 19 CLEAR GLAZING, TYP.
- 20 (E) POWER POLES
- 21 PTD OVERHEAD DOOR
- 22 GREEN SCREEN
- 23 SPLITFACED CMU
- 24 CMU BLOCK
- 25 CUSTOM PTD STEEL TRELLIS W/ LANDSCAPING
- 26 FIBER CEMENT BD. LAP SIDING
- 27 TRANSOM WINDOWS W/ SPANDREL GLAZING
- 28 10' HIGH NEIGHBOR FENCE
- 29 SMOOTH CONCRETE
- 30 SCONCE, TYP.



3 SHOPS ELEVATION
1/8" = 1'-0"



2 SAFEWAY ELEVATION
1/8" = 1'-0"



PROJECT NAME



SAFeway
6310 COLLEGE AVENUE
OAKLAND, CA 94618
STORE #2870

CURRENT OWNER: SAFEWAY
TENANT: SAFEWAY
STORE NUMBER: 2870

CONTACT PERSON:
TODD PARADIS
5918 STONERIDGE MALL ROAD
PLEASANTON, CA 94588-3229
P) 925.467.2078
F) 925.467.2861
E-MAIL - Todd.Paradis@safeway.com

ASSESSOR'S PARCEL NUMBER: 048A707000101

CONSULTANTS

NOT FOR CONSTRUCTION

NO.	DATE	ISSUES AND REVISIONS	BY
01	12/13/12	STAFF REPORT	TV

DATE: 12/13/12
DRAWN BY: TV

PROJECT NUMBER: 09-003
SHEET TITLE

ENLARGED EXTERIOR ELEVATIONS

SHEET NUMBER

A3.3

ALL DRAWINGS AND WRITTEN MATERIAL APPEARING HEREIN CONSTITUTE ORIGINAL AND UNPUBLISHED WORK OF THE ARCHITECT AND MAY NOT BE DUPLICATED, USED OR DISCLOSED WITHOUT WRITTEN CONSENT OF THE ARCHITECT