

Figure 1: Courtland Creek Restoration Project in Courtland Creek Park - Project Location



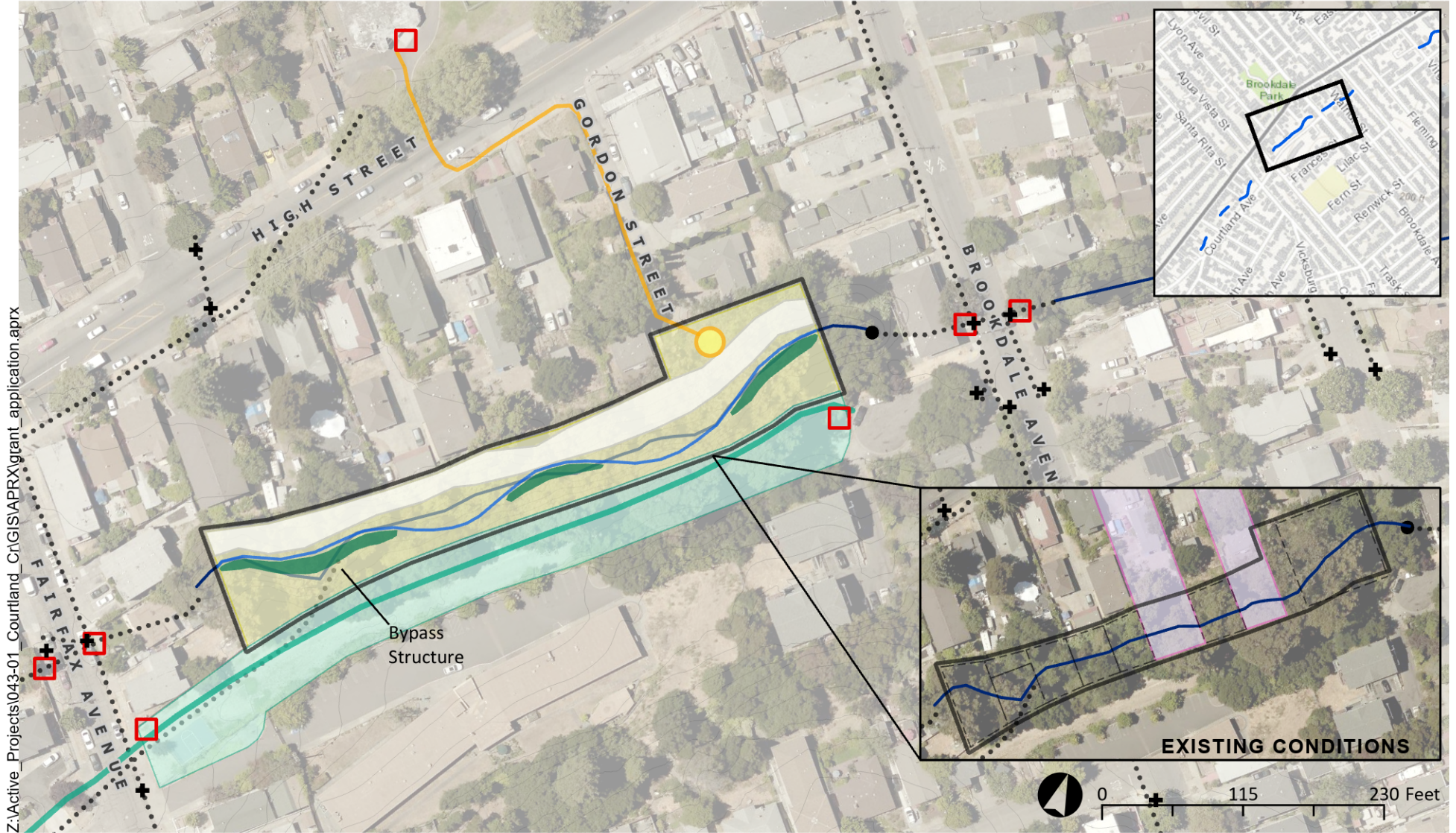
Z:\Active_Projects\043-01_Courtland_Cr\GIS\APRX\grant_application.aprx

Restoration Design Reaches and Model Domain

-  Courtland Creek
-  Reaches
-  Culverts
-  Hydraulic Model Domain



Figure 2: Courtland Creek Restoration Project in Courtland Creek Park - Brookdale Reach



Z:\Active_Projects\043-01_Courtland_CriGIS\APR\X\grant_application.aprx

Existing Conditions

- Courtland Creek (existing)
- Storm drain system
- Culverts
- Inlets
- City and county owned
- City easements

Restoration Design

- Creek restoration footprint
- Potential stream realignment
- Creek walk path
- Connect creek to community center - potential crosswalk

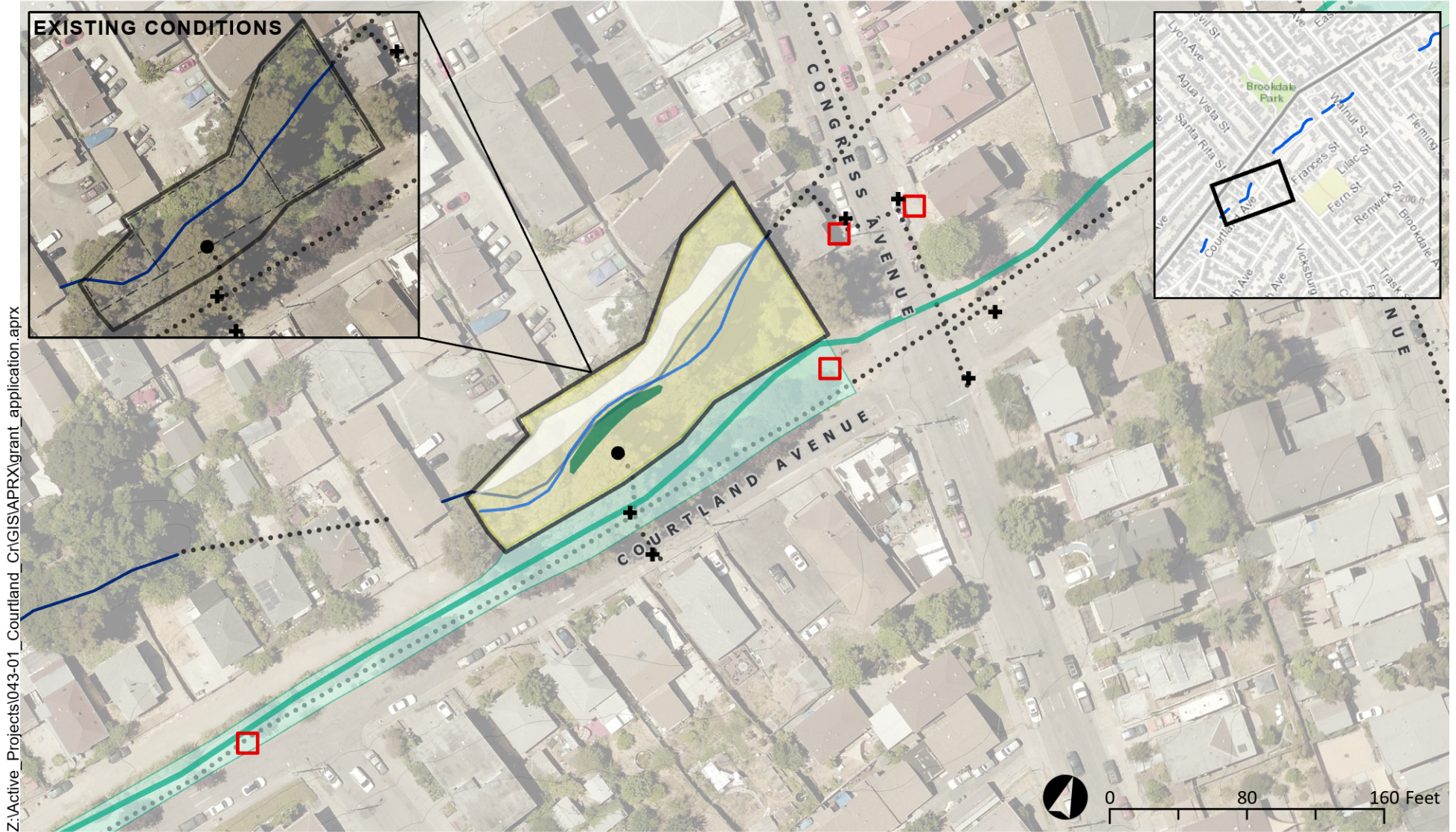
- Bank stabilization
- Potential floodplain terrace
- Accessible creek overlook with educational signage

- Riparian vegetation management*
- Creek parkway accessibility and enhancements
- Educational signage

**To include invasive species removal, eucalyptus removal, and native species planting*



Figure 3: Courtland Creek Restoration Project in Courtland Creek Park - Congress Reach



Z:\Active_Projects\043-01_Courtland_Cr\GIS\APRX\grant_application.aprx

Existing Conditions

- Courtland Creek (existing)
- Storm drain system
- Culverts
- Inlets
- City and county owned
- City easements

Restoration Design

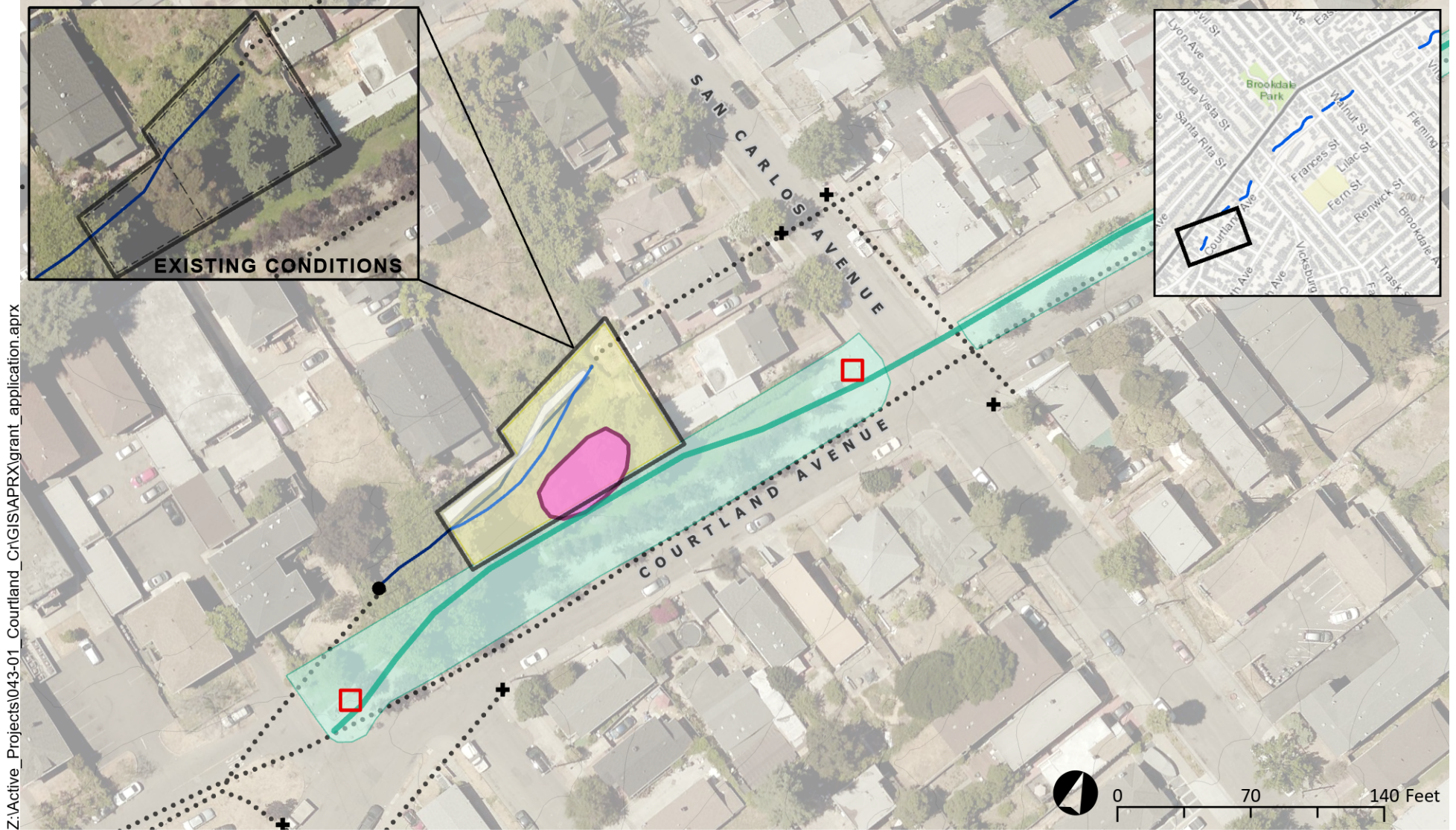
- Creek restoration footprint
- Potential stream realignment
- Creek walk path
- Bank stabilization
- Potential floodplain terrace
- Riparian vegetation management*

- Creek parkway accessibility and enhancements
- Educational signage



**To include invasive species removal, eucalyptus removal, and native species planting*

Figure 4: Courtland Creek Restoration Project in Courtland Creek Park - Thompson Reach



Z:\Active_Projects\043-01_Courtland_CriGIS\APRX\grant_application.aprx

Existing Conditions

- Courtland Creek (existing)
- Storm drain system
- Culverts
- Inlets
- City and county owned
- City easements

Restoration Design

- Creek restoration footprint
- Potential stream realignment
- Creek walk path
- Bank stabilization

- Creek side educational gathering zone
- Riparian vegetation management*

- Creek parkway accessibility and enhancements
- Educational signage



**To include invasive species removal, eucalyptus removal, and native species planting*