

16 JUN 29 PM 4:57

BACKGROUND

Reusable Bag Ordinance 2012-2 went into effect January 2013 and applies to 1,300 grocery, drug and liquor stores in Alameda County that traditionally distribute a high volume of single-use bags. The ordinance promotes the use of reusable bags to prevent waste from happening in the first place, as well as reducing litter and keeping plastic bags out of local waterways.

Ordinance Requirements

As of January 1, 2013, affected stores can only distribute compliant reusable bags or bags made of recycled content paper and only if the store charges a minimum price of 10 cents per bag, itemized on the receipt.

Ordinance Effectiveness

Since implementation, the reusable bag ordinance has had dramatic results:

- Overall bag purchases by affected Alameda County retail stores have **declined by 85 percent**.
- The number of shoppers bringing a reusable bag, or not using a bag at all, has more than **doubled**.
- A 44% decrease in plastic bags found in Alameda County Storm drains.
- Stores are participating with a compliance rate of 90%.

Ordinance Expansion

Given the effectiveness of the current ordinance, the Waste Management Authority (WMA) Board has directed staff to plan for an expansion of the reusable bag ordinance to include all retail stores and restaurants. The WMA is expected to vote on an amended ordinance at the first reading in September, 2016. If approved, an additional 13,000 stores and restaurants would be affected by the ordinance.

TIMELINE

<u>January 2012</u>	Reusable Bag Ordinance 2012-2 adopted by WMA Board. The ordinance covers approximately 1300 stores that sell packaged food and liquor. Board stated it would consider possible expansion of the ordinance at a later time, once effectiveness of original ordinance was determined.
<u>January 2013</u>	Ordinance became effective in all Alameda County jurisdictions. Single-use plastic bags no longer available at stores that sell milk, bread, soda, and snack foods as well and/or liquor. A minimum of 10 cents must be charged for each paper bag or reusable bag distributed at point of sale, itemized on receipt.
<u>September 2014</u>	WMA Board finds that ordinance has achieved its goal to substantially reduce environmental impacts.
<u>October 2014</u>	WMA Board approved process for expansion activities; directed staff to further develop budget and scope for potential expansion of the ordinance. WMA supported the need for buy in from <i>all</i> member agencies that participate in the current ordinance.
<u>March 2015</u>	Alameda County Clean Water Program committed \$180,000 in funding support for expansion of ordinance to a larger set of stores.
<u>July 2015</u>	WMA committed additional funding and staff hours to conduct research and stakeholder outreach relating to ordinance expansion activities.

- December 2015 WMA Board directed staff to develop budget and draft ordinance language to expand to all retail stores (9,000 additional stores) and restaurants (4,000 public eating establishments), with a phase-in approach for restaurants.
- March 2016 WMA approved the proposed reusable bag ordinance expansion language.

ORDINANCE AMENDMENTS

Revised definitions:

Store: Any commercial establishment operating from a permanent enclosed structure that sells perishable or nonperishable goods including, but not limited to, clothing, food and personal items directly to a customer. (Intent: to capture all types of retail stores. Any place where you can walk into a “brick and mortar” store and purchase a tangible item is covered by the ordinance).

Public Eating Establishment: Any restaurant, take-out food establishment or other business (including but not limited to food sales from vehicles or temporary facilities open to the public) that receive 90% or more of its revenue from the sale of prepared and ready-to-consume foods and/or drinks to the public. (Intent: to cover food trucks and vendors who distribute food in bags)

Exemptions:

Produce/Product Bags: bags that are integral to the packaging of the product, or bags without handles provided to the Customer (i) to transport produce, bulk food or meat from a produce, bulk food or meat department within a Store to the point of sale, (ii) to hold prescription medication dispensed from a pharmacy, or (iii) to segregate food or merchandise that could damage or contaminate other food or merchandise when placed together in a Reusable Bag or Recycled Content Paper Bag.

Stores operating in a certified farmers’ market registered in accordance with Section 47020 of the California Food and Agricultural Code. (Only 20 CA certified markets operate in the county, and many use the produce bags without handles, which are already exempt)

Public Eating Establishments are not required to charge customers if distributing recycled content *paper* bags, but must charge a minimum of 10 cents for a compliant reusable bag.

Other Changes:

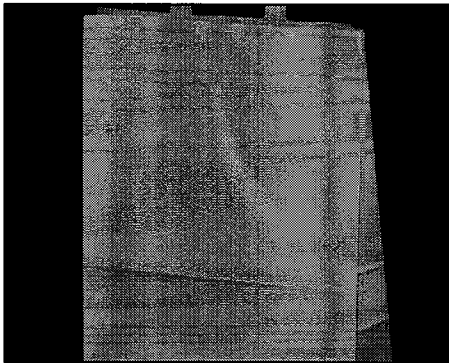
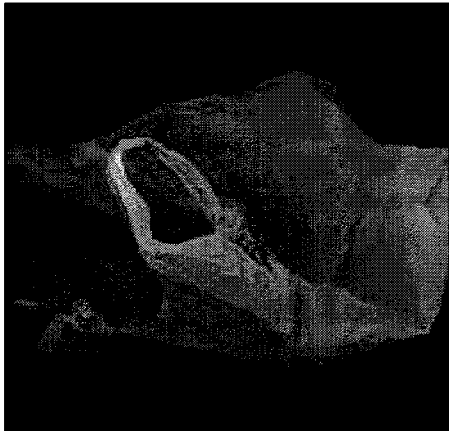
Recordkeeping requirements for bag sales and purchasing are removed.

Switch routine inspections to complaint-based inspection only.

NEXT STEPS

- April - July 2016 Staff available to attend or present (upon request) to member agency governing boards to provide overview of ordinance revisions.
- September 2016 Ordinance introduced and first reading by WMA Board, approval of EIR Addendum
- October 2016 Ordinance second reading and adoption by WMA Board. All member agencies automatically opted in.
- December 2016 Any member agency choosing to opt out must do so by a resolution of its governing body by December 9, 2016.
- May 2017 Ordinance effective for expanded retail stores.
- November 2017 Ordinance effective for all restaurants.

Please contact Meri Soll at 510/891-6500 or msoll@stopwaste to schedule a presentation or for more information.



STOP WASTE

at home • at work • at school

Reusable Bag Ordinance: Ordinance Expansion Language

City Council Meetings

16 JUN 29 | PM 4:50

OFFICE OF THE CITY CLERK
OAKLAND

Overview

- Successful countywide bag ordinance currently in place;
- Potential expansion of ordinance to a larger set of stores;
- StopWaste staff providing background and overview of amended ordinance language to council/sustainability committees;



STOPWASTE

at home • at work • at school

- **StopWaste is a public agency governed by:**
 - Alameda County Waste Management Authority
 - Alameda County Source Reduction and Recycling Board
 - Energy Council
- **StopWaste helps Alameda County's businesses, residents and schools:**
 - Waste less and recycle more
 - Use energy, water and other resources more efficiently

The Alameda County Waste Management Authority

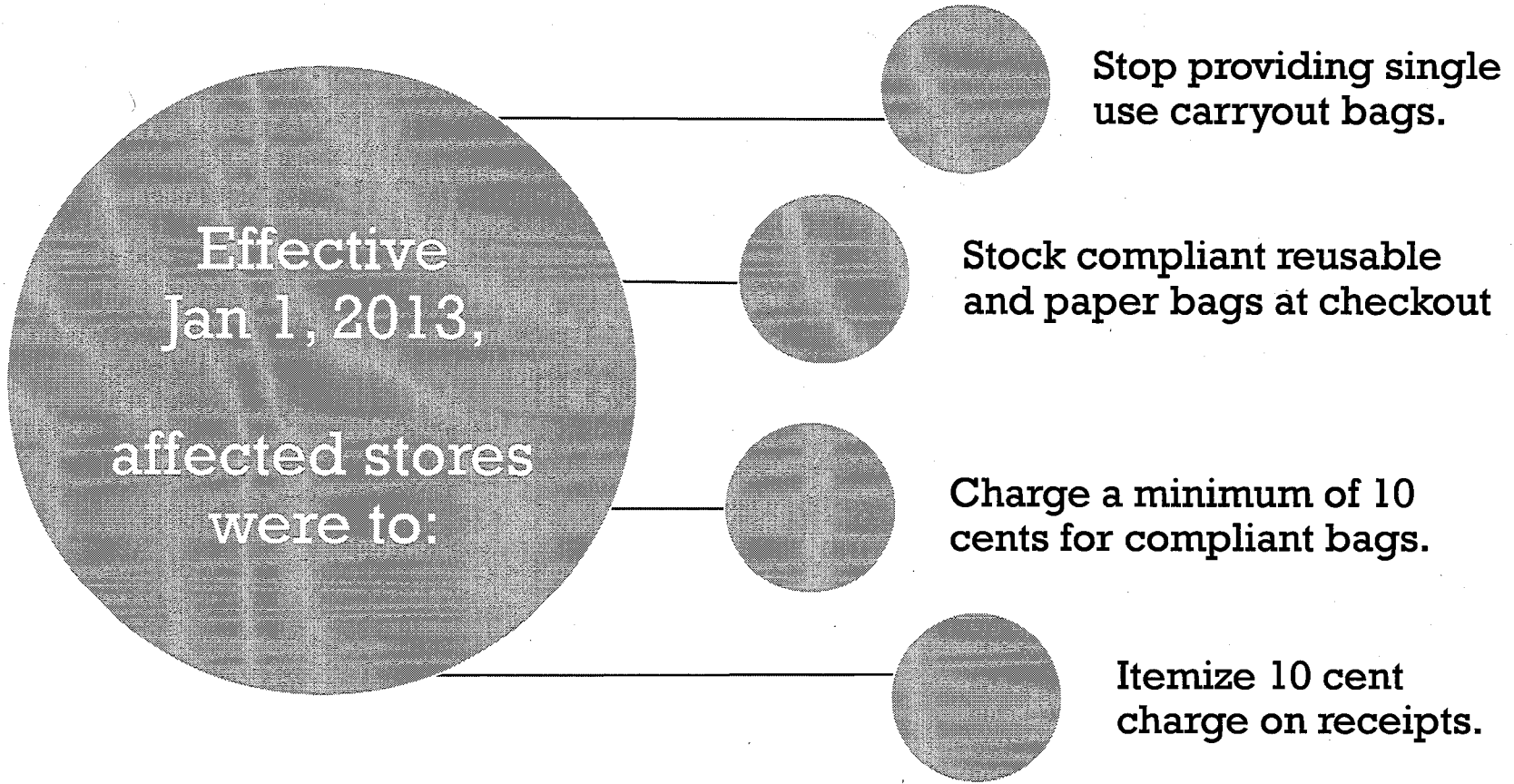
- **WMA is a joint powers agency formed in 1976 by an agreement among:**
 - the County of Alameda
 - each of the fourteen cities in the county,
 - two sanitary districts that provide refuse & recycling collection services.
- **Funding is provided by**
 - per-ton disposal
 - waste import mitigation fees
- **17-member board composed of elected officials appointed by each member agency.**
- **Authority to adopt ordinances, including the Reusable Bag Ordinance 2012-2.**

Stores Currently Affected by the Ordinance

- 1288 affected stores, primarily including:
 - Grocery Stores
 - Drug Stores
 - Liquor stores
- Also includes:
 - Stores that sell milk, bread, soda **AND** snack foods (all four items)
 - **AND/OR** alcohol (Type 20 or 21 license) in Alameda County.



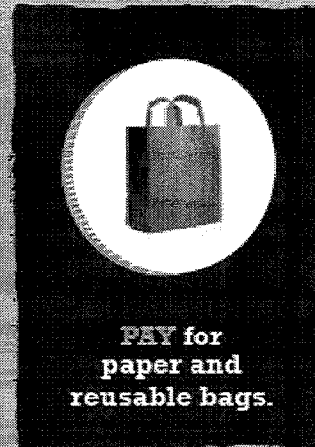
ORDINANCE 2012-2 Adopted by WMA - January 2012



Outreach Campaign to Stores & General Public



BEGINNING JANUARY 1, 2013



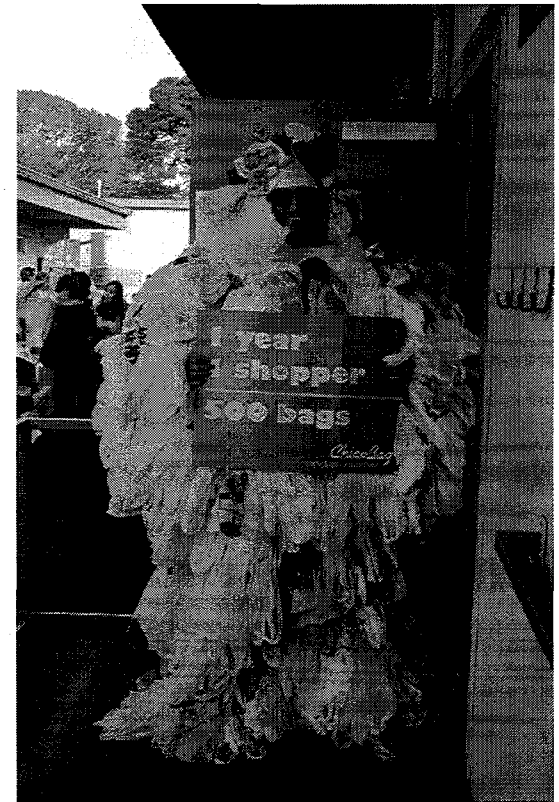
DON'T FORGET ME.



ReusableBagsAC.org

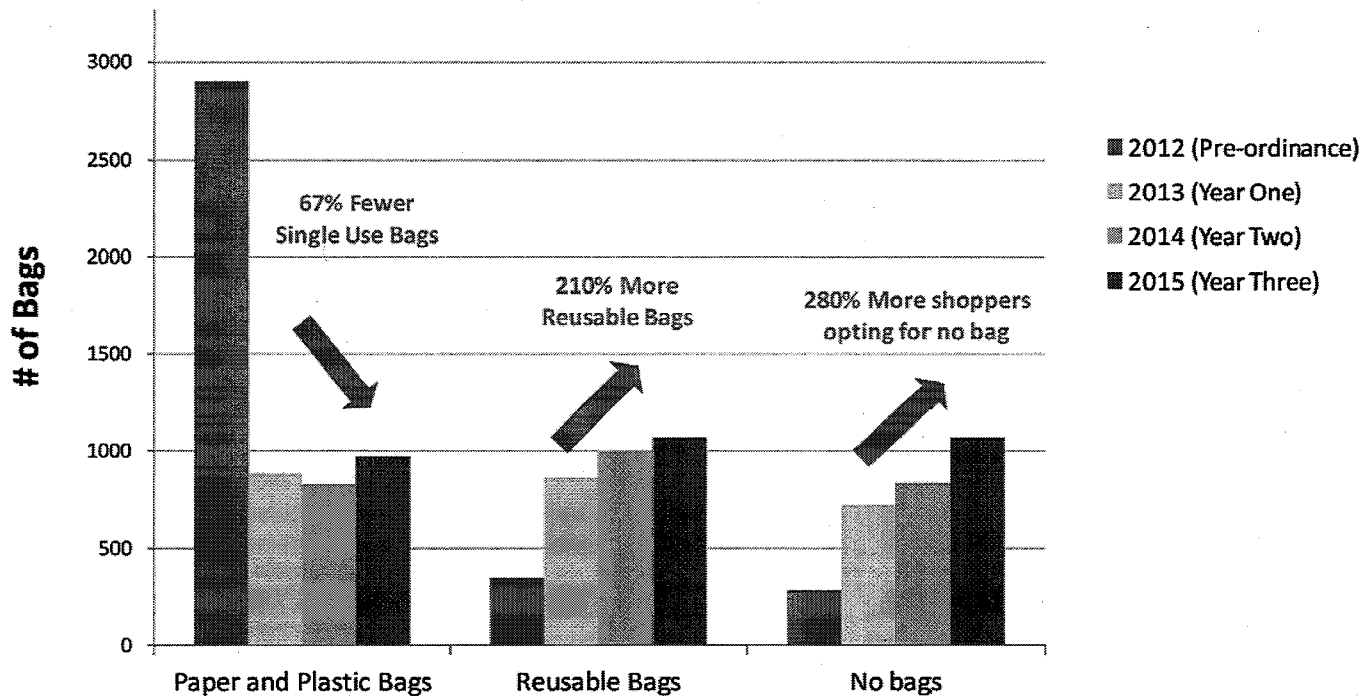
Reasons for the Bag Ordinance

- Reduce litter in our local waterways;
- Promote use of reusable bags to prevent waste;
- Save cities money on litter and storm drain cleanup;
- Decrease the number of bags going to landfill.



Ordinance Effectiveness

- Bag Purchasing survey of 70 stores shows decline by 85%
- Number of shoppers bringing reusable bags, or not using a bag at all, has more than doubled
- Stores are participating with a compliance rate of 90%



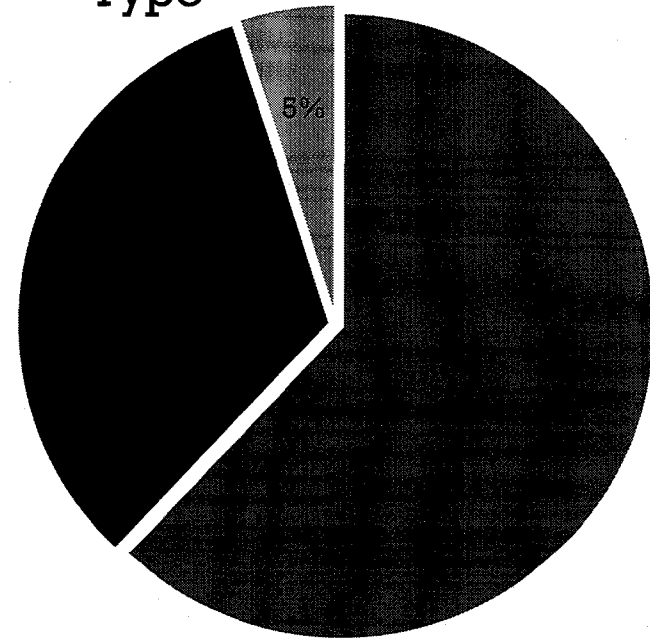
Potentially Affected Stores

STORE TYPE	EST # OF STORES
Currently Affected	1,300
All other Retail	9,000
Restaurants	4,000
Total – Alameda County	14,300

Expansion Potential

- Approximately 764 million bags distributed every year, estimate capturing 62% with currently affected stores

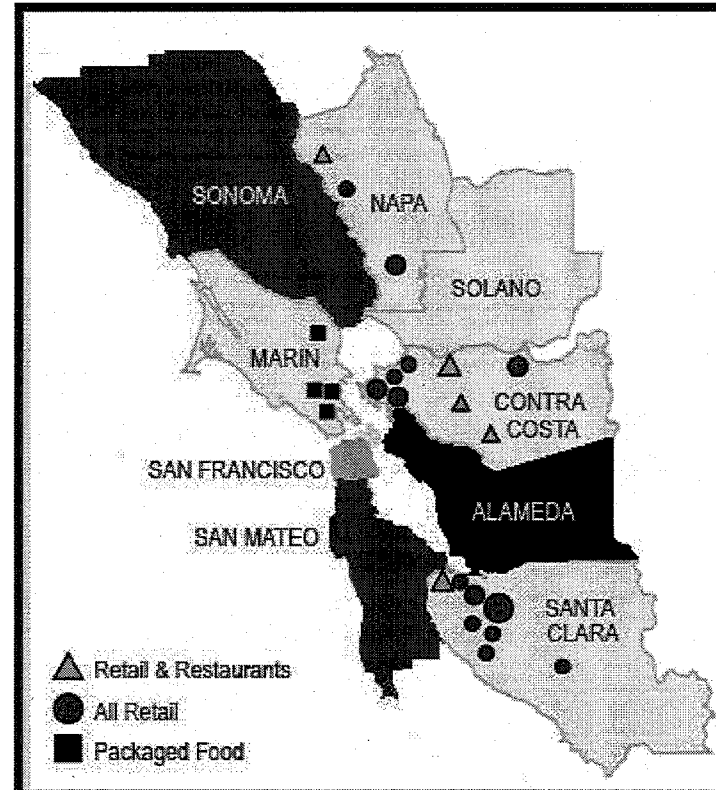
Estimated Plastic Bags Distributed by Store Type



■ Current ■ Retail ■ Restaurant

Rationale for Expansion

- Neighboring cities/counties have implemented ordinances that affect all retail and restaurants
- Ordinance successful at reducing the number of bags distributed at point of sale



WMA Directives

- **Draft Ordinance Expansion Language with the following parameters:**
 - **Expansion to affect all retail stores and restaurants.**
 - **Retail stores same requirements:**
 - Charge a minimum of 10 cents per compliant bag
 - Itemize receipt of bag charge
 - **Restaurants to be phased in 6 months after retail stores with different requirements:**
 - Compliant paper bags can be distributed at no charge
 - Minimum 10 cents charge for compliant reusable bags
 - Itemize receipt of bag charge

Synopsis of Ordinance Amendments

- **Revised Definition of Eating Establishment and Store (Pages 3 and 4)**
 - Affects food trucks and vendors who distribute food in bags
 - Captures all types of retail stores
- **New exemptions**
 - Eating Establishments do not charge for paper bags (Page 6)
 - Farmers' markets (page 7)
- **Complaint based**
 - Switch from inspection based to complaint based

Proposed Timeframe for Adoption

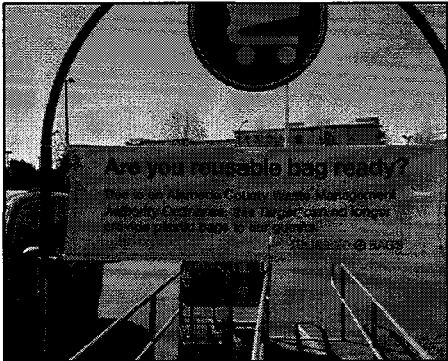
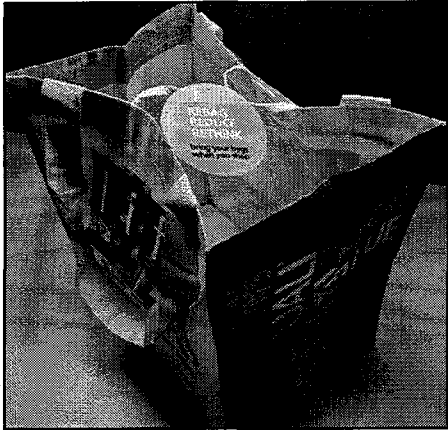
- **April-July 2016** Presentations to city councils
- **September 2016** First Reading by WMA, approve EIR
- **October 2016** Second Reading by WMA ,all member agencies automatically opted in
- **December 2016** Any member agency opting out must do so by resolution by 12.9.16
- **May 2017** Ordinance effective for new retail stores
- **November 2017** Ordinance effective for all restaurants/eating establishments

A note about SB 270

- Governor signed into law September 30, 2014
- American Progressive Bag Alliance successfully suspended via referendum
- General Election Ballot - November 6, 2016
- Alliance working on second ballot measure which would direct bag charges for environmental uses and not to stores.
- **No impact on our ordinance**



Progressive Bag Alliance
ad derails SB 270



STOP WASTE

at home • at work • at school

Questions?

Meri Soll, Senior Program Manager
msoll@stopwaste.org • (510) 891-6500

Proposed Expanded Reusable Bags Ordinance.

16 JUN 29 PM 4:57
This document shows how Alameda County Waste Management Authority Ordinance 2012-2 would be amended if the Board approves expansion of its scope to include all stores and public eating establishments.

**ORDINANCE 2012-2
AS AMENDED BY ORDINANCE 2016-#
(Scheduled for introduction September 28, 2016)**

**ORDINANCE REGULATING THE USE OF CARRYOUT BAGS
AND PROMOTING THE USE OF REUSABLE BAGS**

The Board of the Alameda County Waste Management Authority (“Authority”) ordains as follows:

SECTION 1 (Enactment)

The Board of the Authority does hereby enact this Ordinance in full consisting of Section 1 through Section ~~4~~10.

SECTION 2 (Findings)

- (a) The purpose of this Ordinance is to reduce the use of single use carryout bags and promote the use of reusable bags at the point of sale in Alameda County.
- (b) The Authority has the power to enact this Ordinance pursuant to the Joint Exercise of Powers Agreement for Waste Management (“JPA”). The JPA grants the Authority the power, duty, and responsibility to prepare, adopt, revise, amend, administer, enforce and implement the County Integrated Waste Management Plan (“CoIWMP”), and pursuant to Section 5.m of the JPA, the power to adopt ordinances necessary to carry out the purposes of the JPA.
- (c) Reducing single use bag use is reasonably necessary to carry out the purposes of the JPA and implement the CoIWMP, including the following goals and policies.
- (d) Goal 1 of the CoIWMP is to promote environmental quality, ensure protection of public health and safety, and to minimize environmental impacts in all aspects of solid waste management. Policy 1.4.1 includes reduction of hard to recycle materials.
- (e) Goal 2 of the CoIWMP calls on the Authority and its member agencies to achieve maximum feasible waste reduction and to reduce the amount of waste disposed at landfills through improved management and conservation of resources.
- (f) Policy 2.1.1 adopts a waste management hierarchy that ranks management of waste through source reduction and then recycling and composting above landfill disposal.
- (g) Goal 7 of the CoIMWP is to Promote Inter-jurisdictional Cooperation. Policy

7.1.3 states that the Authority shall coordinate with other organizations as needed to fulfill its countywide role including coordinating on related issues such as water and litter. Objective 7.8 states that the Authority will coordinate and facilitate program implementation by individual or subregional groupings of member agencies.

- (h) Numerous studies have documented the prevalence of plastic carry-out bags littering the environment, blocking storm drains and fouling beaches.
- (i) Plastic bags are a substantial source of marine debris.
- (j) Plastic bags cause operational problems at County landfills and transfer stations and contribute to litter countywide.
- (k) ~~The Authority has participated in a campaign with The Bay Area Recycling Outreach Coalition to promote reusable bags countywide for several years. Despite these efforts, plastic bags comprise 9.6% of litter collected during coastal cleanup days (based on 2008 data) in Alameda County. Additionally, plastic bags continue to cause processing equipment problems at County transfer stations.~~ **Agency studies show that as a result of Ordinance 2012-2, there has been a 44% decrease in plastic bags found in Alameda County Storm drains and a 69% decrease in paper and plastic bags at point of sale, and the number of shoppers bringing a reusable bag to affected stores, or not using a bag at all, has more than doubled.**
- (l) **Member Agencies are required by the Municipal Regional Permit (MRP) for storm water to reduce trash by 70% by 2017 and 100% by 2022, with cities having the option to implement plastic bag bans to achieve these requirements.**
- (m) There are several alternatives to single-use carry-out bags readily available.
- (n) ~~Studies document that banning single use plastic bags and charging for single use paper bags will dramatically reduce the single use of both types of bags.~~ **Despite the positive impacts of the existing ordinance, it is estimated that 62% of the projected 764 million bags distributed in Alameda County are distributed by currently affected stores. Further efforts are needed to decrease single-use checkout bags.**
- (o) The Authority prepared the Mandatory Recycling and Single Use Bag Reduction Ordinances Environmental Impact Report, which considered two separate projects and included the environmental review required by the California Environmental Quality Act for this Ordinance. The Authority certified those portions of the EIR relevant to this Ordinance. **[This section will describe the additional environmental review prepared for amending the reusable bag ordinance once the review is completed].**
- (p) **This ordinance will be enforced using the principle of progressive enforcement with the objective of bringing the regulated community into compliance. Progressive enforcement measures shall be used in the following order in order to promote compliance: (i) official notification of non-compliance, (ii) warning of an**

impending administrative citation and related fine, (iii) issuance of an administrative citation and fine, and (iv) civil enforcement and/or criminal enforcement if warranted by the nature of the violation.

SECTION 3 (Definitions)

The definitions set forth in this Section shall govern the application and interpretation of this ordinance.

- (a) "Alameda County" means all of the territory located within the incorporated and unincorporated areas of Alameda County.
- (b) "Authority" means the Alameda County Waste Management Authority created by the Joint Exercise of Powers Agreement for Waste Management (JPA).
- (c) "Authority Representative" means any agent of the Authority designated by the Enforcement Official to implement this Ordinance, including Member Agency employees, or private contractors hired for purposes of monitoring and enforcement.
- (d) "Covered Jurisdiction" means a Member Agency of the JPA that has not opted out of coverage under **Ordinance 2012-02 or Ordinance 2016-01** ~~this Ordinance~~ pursuant to Section 9 of this Ordinance. **"2012 Covered Jurisdiction" means a Member Agency. "2016 Covered Jurisdiction" means a Member Agency that has not opted out of coverage under Ordinance 2016-01.**
- (e) "Customer" means any Person obtaining goods from a Store.
- (f) "Enforcement Official" means the Executive Director of the Authority or his or her authorized designee.
- (g) "Executive Director" means the individual appointed by the Authority Board to act as head of staff and perform those duties specified by the Authority Rules of Procedure and by the Board.
- (h) "Member Agency" means a party to the JPA. Current member agencies are the County of Alameda, the Cities of Alameda, Albany, Berkeley, Dublin, Emeryville, Fremont, Hayward, Livermore, Newark, Oakland, Piedmont, Pleasanton, San Leandro, Union City, and the Castro Valley and Oro Loma Sanitary Districts. The service areas for the purpose of Section ~~98~~ of this Ordinance are:
 - (1) The legal boundaries of each of the 14 incorporated municipalities within Alameda County.
 - (2) The unincorporated sections of the County.
- (i) "Nonprofit Charitable Reuse Organization" means a charitable organization recognized as having Section 501 (c)(3) status by the Internal Revenue Code of 1986, or a distinct

operating unit or division of the charitable organization, that reuses and recycles donated goods or materials and receives more than fifty percent (50%) of its revenues from the handling and sale of those donated goods or materials.

- (j) "Person" means an individual, firm, public or private corporation, limited liability company, partnership, industry or any other entity whatsoever.
- (k) "Postconsumer recycled material" means a material that would otherwise be destined for solid waste disposal, having completed its intended end use and product life cycle. Postconsumer recycled material does not include materials and byproducts generated from, and commonly reused within, an original manufacturing and fabrication process.
- (l) "Primary Enforcement Representative" is the chief executive of a Covered Jurisdiction or a qualified designee who will coordinate with the Authority regarding implementation of the Ordinance. A qualified designee shall have at least two years of municipal code enforcement experience or have undergone at least the level one municipal code compliance training program of the California Association of Code Enforcement Officers, or equivalent training program approved by the Enforcement Official.
- (m) **"Produce/Product Bags" are bags that are integral to the packaging of the product, or bags without handles provided to the Customer (i) to transport produce, bulk food or meat from a produce, bulk food or meat department within a Store to the point of sale, (ii) to hold prescription medication dispensed from a pharmacy, or (iii) to segregate food or merchandise that could damage or contaminate other food or merchandise when placed together in a Reusable Bag or Recycled Content Paper Bag.**
- (n) "Public Eating Establishment" means a restaurant, take-out food establishment or other business **(including, but not limited to, food sales from vehicles or temporary facilities open to the public)** that receives 90% or more of its revenue from the sale of **prepared and ready-to-consume** foods and/or drinks **to the public** prepared on the premises.
- (o) "Recycled **Content** Paper Bag" means a paper bag provided by a Store to a Customer at the check stand, cash register, point of sale, or other location for the purpose of transporting food or merchandise out of the Store and that contains no oldgrowth fiber and a minimum of forty percent (40%) postconsumer recycled material; is one hundred percent (100%) recyclable and compostable, consistent with the timeline and specifications of the American Society of Testing and Materials (ASTM) Standard D6400; and has printed in a highly visible manner on the outside of the bag the words "Recyclable," the name and location of the manufacturer, and the percentage of post-consumer recycled content.
- (p) "Reusable Bag" means a bag with handles that is specifically designed and manufactured for multiple reuse and meets all of the following requirements: 1) has a minimum lifetime of 125 uses, which for purposes of this subsection, means the

capability of carrying a minimum of 22 pounds 125 times over a distance of at least 175 feet; 2) has a minimum volume of 15 liters; 3) is machine washable or is made from a material that can be cleaned or disinfected; 4) does not contain lead, cadmium or any other heavy metal in toxic amounts, as defined by applicable state and federal standards and regulations for packaging or reusable bags; 5) has printed on the bag, or on a tag that is permanently affixed to the bag, the name of the manufacturer, the location (country) where the bag was manufactured, a statement that the bag does not contain lead, cadmium, or any other heavy metal in toxic amounts, and the percentage of postconsumer recycled material used, if any; and 6) if made of plastic, is a minimum of at least 2.25 mils thick.

(q) "Single-Use Carryout Bag" means a bag other than a Reusable Bag provided at the check stand, cash register, point of sale or other location for the purpose of transporting food or merchandise out of the Store. Single-Use Carryout Bags do not include **Produce/Product Bags**, ~~bags that are integral to the packaging of the product, or bags without handles provided to the Customer (i) to transport produce, bulk food or meat from a produce, bulk food or meat department within a Store to the point of sale, (ii) to hold prescription medication dispensed from a pharmacy, or (iii) to segregate food or merchandise that could damage or contaminate other food or merchandise when placed together in a Reusable Bag or Recycled Paper Bag.~~

(r) "Store" means any of the following stores located within Covered Jurisdictions:

- (1) **Within 2012 Covered Jurisdictions a** A full-line, self-service retail store with gross annual sales of two million dollars (\$2,000,000), or more, that sells a line of dry grocery, canned goods, or nonfood items and some perishable items;
- (2) **Within 2012 Covered Jurisdictions a** A store of at least 10,000 square feet of retail space that generates sales or use tax pursuant to the Bradley-Burns Uniform Local Sales and Use Tax Law (Part 1.5 (commencing with Section 7200) of Division 2 of the Revenue and Taxation Code) and that has a pharmacy licensed pursuant to Chapter 9 (commencing with Section 4000) of Division 2 of the Business and Professions Code; or
- (3) **Within 2012 Covered Jurisdictions a** A drug store, pharmacy, supermarket, grocery store, convenience food store, foodmart, or other entity engaged in the retail sale of goods that include milk, bread, soda, and snack foods, including those stores with a Type 20 or 21 license issued by the Department of Alcoholic Beverage Control.
- (4) **Within 2016 Covered Jurisdictions on and after May 1, 2017 the stores listed in sections 3(r)(1), (2) and (3) above and any other commercial establishment operating from a permanent enclosed structure that sells perishable or nonperishable goods including, but not limited to, clothing, food and personal items directly to a customer; and**
- (5) **Within 2016 Covered Jurisdictions on and after November 1, 2017 any Public Eating Establishment.**

SECTION 4 (Carryout Bag Restrictions)

- (a) No Store shall provide a Single-Use Carryout Bag or Reusable Bag to a Customer at the check stand, cash register, point of sale or other location for the purpose of transporting food or merchandise out of the Store after January 1, 2013 except as provided in this Section.
- (b) ~~On or before January 1, 2015, a~~ A Store may make available for sale to a Customer a Recycled Content Paper Bag or a Reusable Bag for a minimum price of ten cents (\$0.10).
- (c) **A Store that is a Public Eating Establishment may make available to a Customer a Recycled Content Paper Bag at no charge, or a Reusable Bag for a minimum price of ten cents (\$0.10).** ~~On or after January 1, 2015, a Store may make available for sale to a Customer a Recycled Paper Bag or a Reusable Bag for a minimum price of twenty five cents (\$0.25). This restriction, however, shall not apply if the Authority finds, after January 1, 2014, that the Ordinance has achieved its goal to substantially reduce the environmental impacts of the use of Single Use Carryout Bags, in which case the minimum ten cents (\$0.10) per bag price provided in Section 4(b) shall apply.~~
- (d) No Store may make available for sale a Recycled Content Paper Bag or Reusable Bag unless the amount of the sale of the Recycled Content Paper Bag and Reusable Bag is separately itemized on the sales receipt.
- (e) A Store may provide a Reusable Bag at no charge if it is distributed as part of an infrequent and limited time promotion. An infrequent and limited time promotion shall not exceed a total of 90 days in any consecutive 12 month period.
- (f) A Store may provide free Reusable Bags or free Recycled Content Paper Bags at the point of sale to a Customer participating in the California Special Supplemental Food Program for Women, Infants, and Children pursuant to Article 2 (commencing with Section 123275) of Chapter 1 of Part 2 of Division 106 of the California Health and Safety Code; **a Customer participating in CalFresh pursuant to Chapter 1 commencing with Section 18900) of Part 6 of Division 9 of the California Welfare and Institutions Code;** and a Customer participating in the Supplemental Food Program pursuant to Chapter 10 (commencing with Section 15500) of Part 3 of Division 9 of the California Welfare and Institutions Code, as necessary to carry the items purchased at the Store by each such Customer.

SECTION 5 (Permitted Bags)

Nothing in this Ordinance prohibits Customers from using bags of any type that they bring to the Store themselves or from carrying away goods that are not placed in a bag.

SECTION 6 (Exemptions)

This Ordinance does not apply to:

- (a) ~~Single Use Carryout Bags or Reusable Bags~~ **Produce/Product Bags** distributed to Customers by food providers for the purpose of safeguarding public health and safety during the transportation of take-out foods and drinks prepared on the food provider's premises but intended for consumption at or away from the food provider's premises.
- (b) Single-Use Carryout Bags or Reusable Bags used by ~~Public Eating Establishments or Nonprofit Charitable Reuse Organizations.~~
- (c) **Stores operating in a certified farmers' market registered in accordance with Section 47020 of the California Food and Agricultural Code.**

SECTION 7 (Recordkeeping and Inspection)

- (a) ~~Every Store shall keep complete and accurate records of the number of Recycled Paper Bags and the number of Reusable Bags purchased and sold each month at the Store during the period commencing July 1, 2012 and ending December 31, 2013. The store shall also keep complete and accurate records of the days on which free Reusable Bags are distributed pursuant to section 4(e) of this Ordinance. All records required by this Ordinance shall be available for inspection within 7 days of the Authority's request at no cost to the Authority during regular business hours by any Authority Representative authorized to enforce this Ordinance. Unless an alternative location or method of review is mutually agreed upon, the records or documents shall be available at the Store address.~~
- (b) ~~The provision of false information including incomplete records or documents to the Authority shall be a violation of this Ordinance.~~
- (c) ~~Authority Representatives are authorized to conduct any other inspections reasonably necessary to further the goals of this Ordinance, subject to applicable laws.~~

SECTION 87 (Enforcement and Phasing)

- (a) **Pre-enforcement Consultation.** An enforcement action shall not be taken in any Covered Jurisdiction without written approval from the Primary Enforcement Representative of that Covered Jurisdiction. The Primary Enforcement Representative shall provide approval or disapproval of a proposed enforcement action in a timely manner.

- (b) **Administrative Enforcement.** Violation of any provision of this Ordinance shall constitute grounds for assessment of a notice of violation and fine by an Authority Representative in accordance with Government Code § 53069.4 or as the code shall subsequently be amended or reorganized. Where an enforcement action is necessary to enforce this Ordinance, the Enforcement Official will typically issue a notice of violation as authorized in this subsection prior to taking the actions authorized pursuant to sections ~~78~~(c) or ~~78~~(d) of this Ordinance. A separate notice of violation and fine may be imposed for each day on which a violation occurs. The fine shall not exceed the amounts detailed for misdemeanors in Section ~~78~~(d) of this Ordinance. The notice of violation shall list the specific violation and fine amount and describe how to pay the fine and how to request an administrative hearing to contest the notice of violation. The fine must be paid within 30 days of the notice of violation and must be deposited prior to any requested hearing. A hearing, by a hearing officer, will be held only if it is requested within 30 days of the notice of violation. Evidence may be presented at the hearing. If it is determined that no violation occurred, the amount of the fine shall be refunded within 30 days. The Authority shall serve the final order on the Person subject to the notice of violation by first class, overnight or certified mail.
- (c) **Civil Action.** Violation of any provision of this Ordinance may be enforced by a civil action including an action for injunctive relief.
- (d) **Infractions and Misdemeanors.** Violation of any provision of this Ordinance shall constitute a misdemeanor punishable by a fine not to exceed \$500 for the first violation, a fine not to exceed \$750 for the second violation within one year and a fine not to exceed \$1000 for each additional violation within one year. Violation of any provision of this Ordinance may also be enforced as an infraction punishable by a fine not to exceed \$100 for the first violation, a fine not to exceed \$200 for the second violation within one year and a fine not to exceed \$500 for each additional violation within one year. There shall be a separate offense for each day on which a violation occurs.
- (e) **Authorized Representatives.** Enforcement pursuant to this Ordinance may be undertaken by the Authority through its Executive Director, counsel, or any Authority Representative. In any enforcement action, the Authority shall be entitled to recover its attorneys' fees and costs from any Person who violates this Ordinance. **Authority Representatives are authorized to conduct any inspections reasonably necessary to further the goals of this Ordinance, subject to applicable laws.**
- (f) **Phasing. Notwithstanding the foregoing inspection and enforcement authorization** Enforcement of this ordinance **the amendments to this ordinance adopted by Ordinance 2016-01** shall be phased on the following schedule. Prior to January 1, 2013, **the date that a type of establishment will be considered a Store, those establishments** Stores will be notified and public education and outreach activities will take place. ~~Warnings and enforcement~~ **Enforcement** actions will be taken as needed **beginning November 1, 2017 for Stores described in Section 3(q)(4) and beginning May 1, 2018 for Stores described in Section 3(q)(5)** January 1, 2013.

SECTION 98 (Local Regulation and Opt-Out and Opt-In Provisions)

- (a) Local Regulation. Nothing in this Ordinance shall be construed to prohibit any Member Agency from enacting and enforcing ordinances and regulations regarding the distribution of Single-Use Carryout Bags and Reusable Bags, including more stringent requirements than those in this Ordinance.
- (b) Opt-Out Provision. Any Member Agency by a resolution of its governing body prior to ~~March 2, 2012 may choose to exclude its service area from this Ordinance~~ **December 9, 2016 may choose to exclude its service area from the amendments to Ordinance 2012-02 adopted by Ordinance 2016-01 adopted September 28, 2016.**
- (c) Opt-In Provision. Any Member Agency that chooses to exclude its service area may request of the Authority by a resolution of its governing board to be re- included in coverage of the Ordinance at any subsequent time. Such coverage under the Ordinance, however, shall not occur unless it is accepted in writing by the Enforcement Official or the Authority Board, and shall become effective only on the date specified in such written acceptance. Such acceptance shall not be unreasonably withheld or delayed.
- (d) Dispute Resolution. In the event of a dispute between the Authority and a Covered Jurisdiction regarding the implementation of this Ordinance, either party may request a meeting, in which case the Enforcement Official and the Primary Enforcement Representative for the Covered Jurisdiction (or other designee of the chief executive of the Covered Jurisdiction) shall meet to discuss implementation of the Ordinance. After such meeting, the parties may agree to enter into mediation to resolve any disputes between the parties related to implementation of the Ordinance. In addition, after meeting to seek to resolve any disputes between the parties and possible mediation, the Authority Board or the governing body of the Covered Jurisdiction, with at least 30 days public notice, may by resolution choose to exclude the service area of the Covered Jurisdiction from this Ordinance.

SECTION 109 (Severability)

If any provision of this Ordinance or its application to any situation is held to be invalid, the invalidity shall not affect other provisions or applications of this Ordinance which can be given effect without the invalid provision or application, and to this end the provisions of this Ordinance are declared to be severable.

SECTION 110 (Notice and Verification)

This Ordinance shall be posted at the Authority Office after its second reading by the Board for at least thirty (30) days and shall become effective thirty (30) days after the second reading.

DRAFT

4/14/16

775879.1