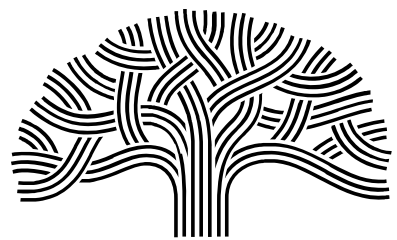


Stormwater Trash Load Reduction Compliance Update

Terri Fashing
Acting Watershed Manager
Watershed & Stormwater Management Division
Public Works Department
Bureau of Design and Construction



**CITY OF
OAKLAND**



- City subject to Municipal Regional Stormwater Permit (MRP) requirements to reduce trash discharges from storm drains to waterways
- Incremental changes in MRP requirements since 2009
- 2022 third iteration of MRP (MRP 3.0) phases out compliance credits, requires new program to regulate large private parcels.
- To meet requirements by June 30, 2025 and 2026:
 - Expand existing trash reduction programs
 - Install ~1,880 additional full trash capture systems in the storm drain system

Compliance Baseline

- Accounts for trash generation levels across City by land-use type
- New actions compared to baseline set in first MRP (2009-2015)

Very-High trash level example



Trash Load Reduction Accounting

- FY 2021/22 trash reduction credits
 - Full Trash Capture Systems (11.5%)
 - Creek & Shoreline Cleanups (10%)
 - Source Control Actions (10%)
 - Direct Trash Discharge Control Program (15%)
 - Other Control Measures (61.5%)
- Total credits = 108%
- Exceeded MRP 2.0 requirement



Full Trash Capture Devices

- 219 total
 - Hydrodynamic separators (10)
 - Connector pipe screens (197)
 - Gross solids removal device (2)
 - Green stormwater infrastructure (4)
 - Tree wells (6)
- Over 1,800 more installed in next 3 years
- Capital costs up to \$5.64M



Source Control Actions

- First compliance credit phased out
- No longer provides 10% credit
- Single-use Plastic Bag Ban
- Polystyrene Foam Disposable Food Service Ware Ban

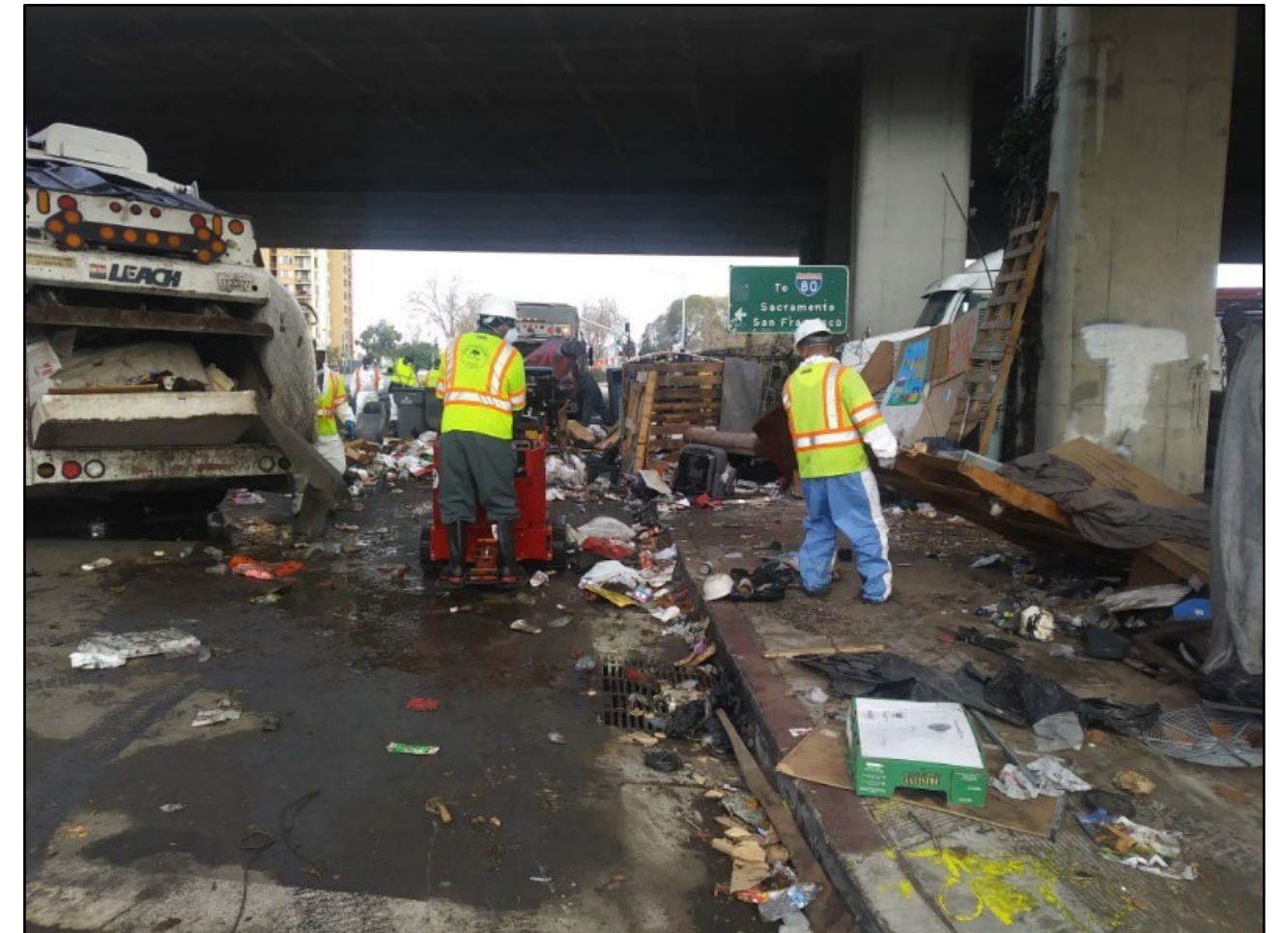
Creek & Shoreline Cleanups

- Until June 30, 2025 provides 10% credit
- 492K gallons cleaned in Fiscal Year 2021/22
- +192% increase in volunteer hours since 2010



Direct Trash Discharge Control Plan

- Until December 31, 2025 provides 15% credit
- Illegal dumping and homeless encampment cleanups near waterways
- Leverages existing programs
- Applied for reauthorization

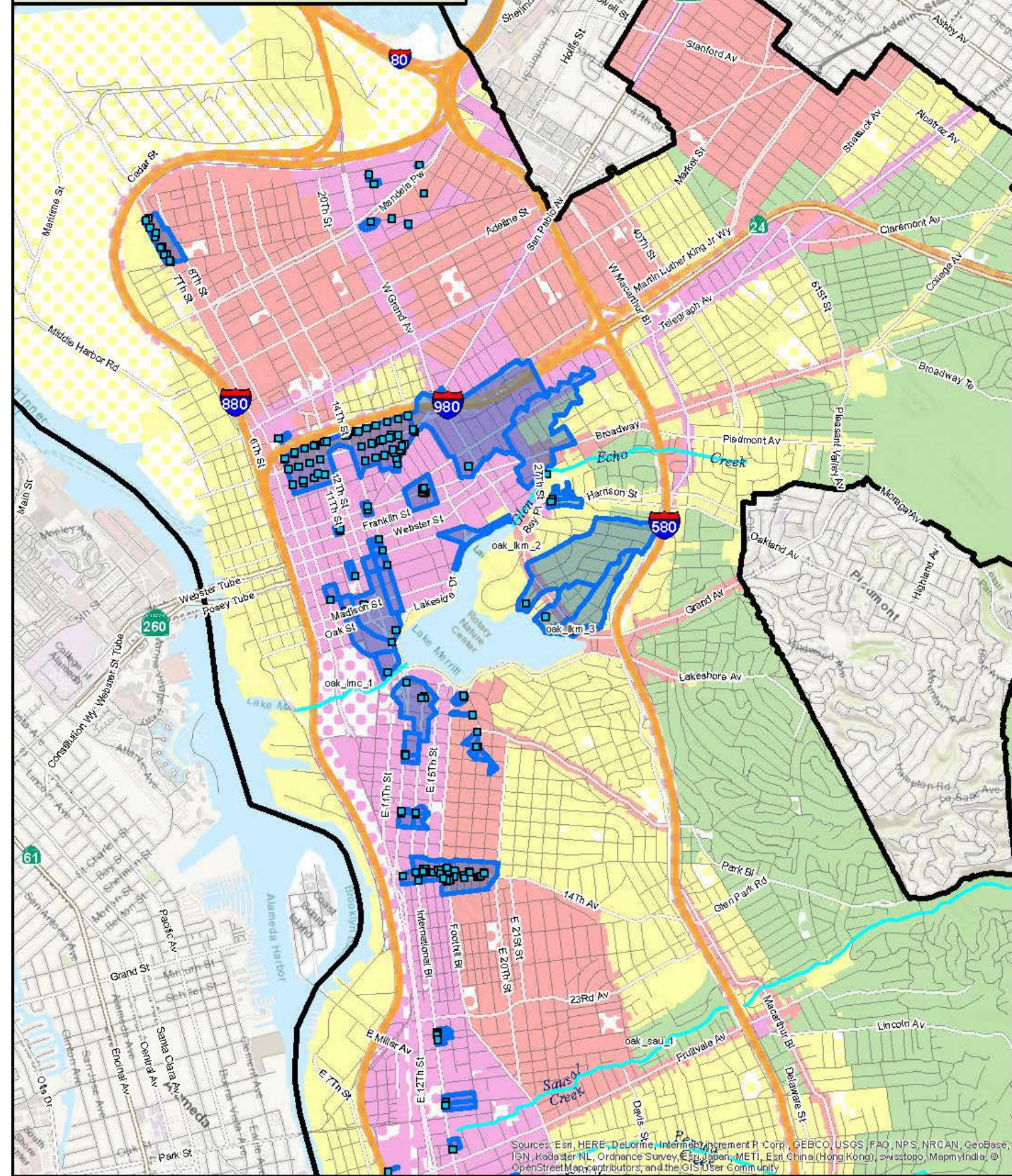


Other Trash Control Measures

- Compliance credit measured through on-land visual trash assessments (OVTAs)
- Accounts for trash reduction improvements from:
 - Street sweeping; Adopt-a-Spot; Adopt-a-Drain; Excess Litter Fee; Business Improvement Districts; business inspections; Environmental Enforcement Officers; and education and outreach (e.g., Oaktown PROUD)



City of Oakland North - Full Capture Map

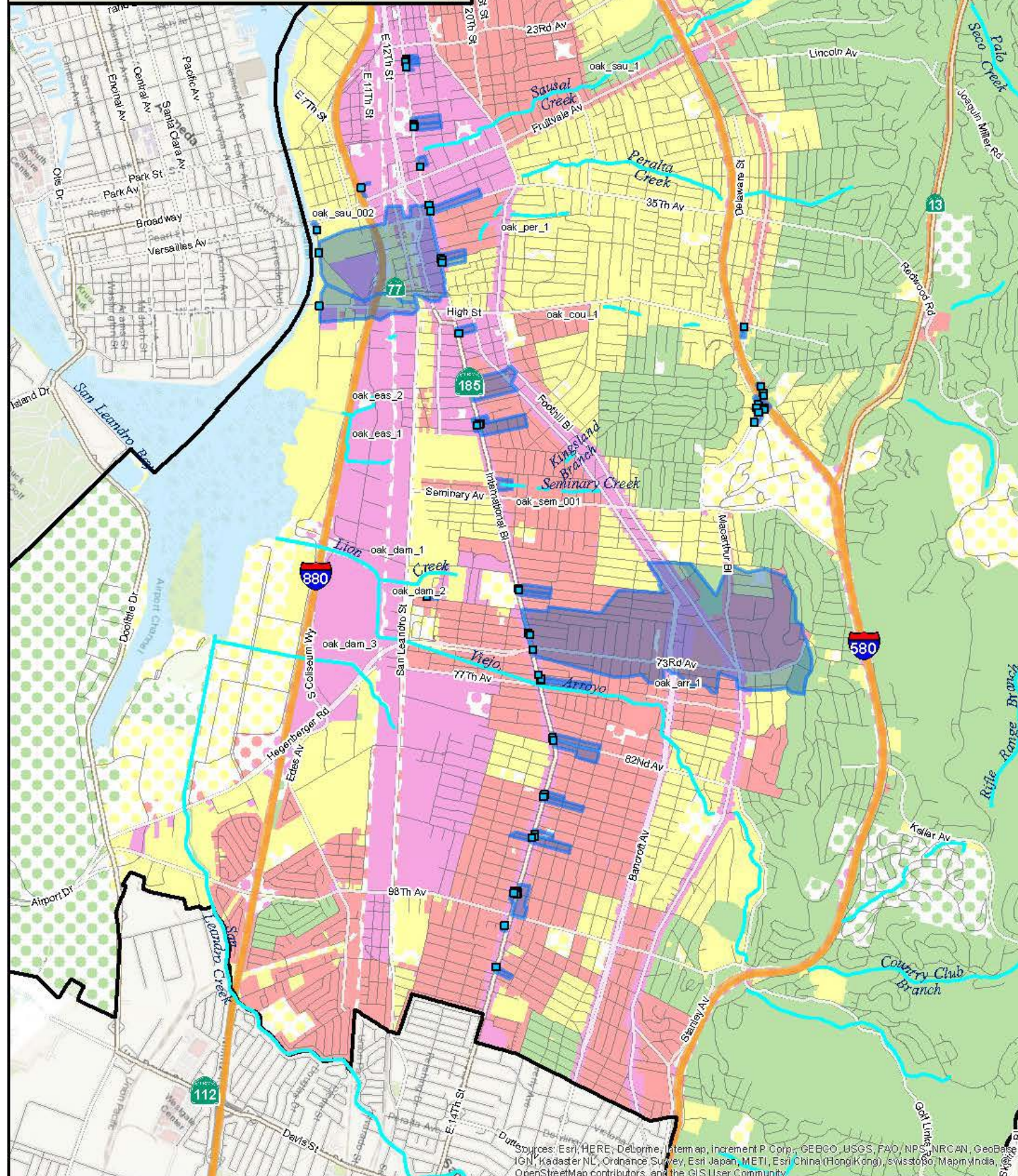


Legend

 Low	 Full-Capture Location	 Streets
 Moderate	 Trash Full Capture	 Freeway
 High	 Non-Jurisdictional (Dot color = Generation Category)	 Creeks
 Very High		0 0.25 0.5 1 Miles

Sources: Esri, HERE, DeLorme, Intermap, increment P Corp., GEBCO, USGS, FAO, NPS, NRCAN, GeoBase, IGN, Kadaster NL, Ordnance Survey, Esri Japan, METI, Esri China (Hong Kong), Swisstopo, Mapbox India, OpenStreetMap contributors, and the GIS User Community

City of Oakland South - Full Capture Map



Legend

Trash Generation Category

- Low
- Moderate
- High
- Very High

- Full-Capture Location
- Trash Full Capture
- Non-Jurisdictional
(Dot color = Generation Category)

- Streets
- Freeway
- Creeks



Sources: Esri, HERE, DeLorme, Intermap, increment P Corp., GEBCO, USGS, FAO, NPS, NRCAN, GeoBase, IGN, Kadaster NL, Ordnance Survey, Esri Japan, METI, Esri China (Hong Kong), Swisstopo, Mapbox, OpenStreetMap contributors, and the GIS User Community

MRP 3.0 Compliance Credits Changes

- 27% trash reduction credits needed by FY 2025/26

Trash Load Reduction Action	FY 25/26
1) Full Trash Capture Systems	11.5%
2) Creek and Shoreline Cleanups	0%
3) Source Control Actions	0%
4) Direct Trash Discharge Control Program	0%
5) Other Control Measures	61.5%
Total	73%
Compliance Requirement	100%
Trash Credits Needed	27%

Require Large Parcels to Control Trash

- Private parcels with storm drainage plumbed directly to City's storm drain system must control trash by June 30, 2025
- Install full trash capture systems or implement equivalent trash reduction programs
- Includes businesses and residential properties

Planned Actions and Challenges Ahead

Actions

1. Install full trash capture devices (~1,880)
 - Integrate in future OPW and DOT projects
 - Measure Q funding
 - Continue and expand existing trash reduction programs

Challenges

- Controls on private land drainage areas
- Capital costs to install trash capture devices
- Cost to maintain thousands of trash capture devices

LEARN MORE

To learn more about actions the City of Oakland Watershed & Stormwater Management Division is taking to protect water quality and restore and preserve Oaklands, creeks, lakes and watersheds visit:

[Oaklandcreeks.org](https://oaklandcreeks.org)