



FILED  
OFFICE OF THE CITY CLERK  
OAKLAND

2012 OCT 11 PM 2:02

## ***AGENDA REPORT***

TO: DEANNA J. SANTANA  
CITY ADMINISTRATOR

FROM: Vitaly B. Troyan, P.E.

SUBJECT: Adeline Street Bridge Seismic Retrofit  
Project

DATE: September 11, 2012

City Administrator  
Approval

Date:

10/10/12

COUNCIL DISTRICT: 3

### **RECOMMENDATION**

Staff recommends the City Council to adopt a Resolution authorizing the City Administrator to enter into a Professional Service Agreement with Biggs Cardosa Associates, Inc., to provide Professional Engineering Services for the Seismic Retrofit of Adeline Street Bridge (Project No. G426920) For an Amount Not to Exceed Seven Hundred Eighteen Thousand Dollars (\$718,000.00) in Accord with the Request for Proposal (RFP) and its Amendments.

### **OUTCOME**

Approval of the resolution will authorize the City Administrator to execute a professional service contract with Biggs Cardosa Associates, Inc., for an amount not to exceed \$718,000.00 for seismic retrofit design of Adeline Street Bridge. The work is located in Council Districts 3 as shown in *Attachment A*.

### **BACKGROUND/LEGISLATIVE HISTORY**

Adeline Bridge is a major facility connecting the Port of Oakland with Interstate 880 (I-880) and is extensively used by trucks for delivery of goods to and from the Port. In 2011, staff successfully sought and received federal Highway Bridge Program (HBP) grant funding through Caltrans Office of Local Assistance for the seismic retrofit of this bridge.

### ***Selection Process***

On May 8, 2012, the City advertised the Request for Proposal (RFP) for design of the project. On June 7, 2012, the City received three proposals for the services. The prime consultants who submitted proposals were:

Item: \_\_\_\_\_  
Public Works Committee  
October 23, 2012

- Biggs Cardosa Associates, Inc.
- URS
- Creegan + DeAngelo Infrastructure Engineers

### ***Selection Criteria***

As required, a qualifications-based selection process was used to rank proposals. The firms were evaluated based on the following criteria:

- Quality of proposal, responsiveness and conformance to RFP requirements;
- Experience and professional background of project team and organization;
- Overall experience of the project team relative to the project;
- The design team's experience and qualification relative to the specific need for Adeline Street Bridge Seismic Retrofit;
- Consultant's prior experience relative to work with City, Caltrans and Union Pacific;
- The team's approach to the project, including a specific outline of how the work will be performed; and
- References.

A panel of four members reviewed the proposals against these criteria. The panel included a representative from Caltrans and staff from the Public Works Agency. All three firms were selected to proceed to the next phase.

On July 18, 2012, the consultant teams made presentations and were interviewed by the same panel. Based on the presentations and interviews, Biggs Cardosa Associates, Inc., was selected as the team most qualified to complete this project. Their cost proposal for the services is \$598,532.00 with contingency of \$119,468.00 totaling \$718,000.00.

### **ANALYSIS**

Adoption of the resolution will allow staff to enter into a professional services contract with Biggs Cardosa Associates, Inc. The services will provide technical studies to address the environmental topics required by Caltrans, develop alternatives for the seismic retrofit, produce submittal packages through Caltrans Local Assistance and provide construction support during construction. The project is scheduled to begin design in November, 2012 and be completed by February 2014. The project schedule is shown in ***Attachment B***.

Because this project is funded by federal funds, the federal Race Conscious Underutilized Disadvantaged Business Enterprise (RC UDBE) Program must be used in lieu of the City's Local/Small Local Business Enterprise (LBE/SLBE) Program in determining qualified bidders. Biggs Cardosa Associates, Inc., meets the 7.22% UDBE percentage requirement. The UDBE information for the three teams has been verified by the Social Equity Division of the Department of Contracting and Purchasing, and is shown in ***Attachment C***.

**PUBLIC OUTREACH/INTEREST**

As part of the project design, the Consultant will be required to coordinate the project with all stakeholders including the nearby residents, business owners, Port of Oakland, Union Pacific Railroad, AC transit, utility companies and Caltrans.

**COORDINATION**

The project needs to be coordinated with the following agencies:

- Port of Oakland
- AC Transit
- Union Pacific Railroad
- Utility companies having facilities within the project limits

Offices consulted in the preparation of this report are the following:

- Public Works Agency, Department of Infrastructure & Operations
- Office of the City Attorney
- City Budget Office

**COST SUMMARY/IMPLICATIONS**

Approval of the resolution will authorize the City Administrator to execute a professional services contract with Biggs Cardosa Associates, Inc., in the amounts outlined in the table below:

1. AMOUNT OF RECOMMENDATION/COST OF PROJECT:

COST ELEMENT	AMOUNT
Proposal Cost	\$598,532.00
Contingency	\$119,468.00

2. SOURCE OF FUNDING:

FUNDING SOURCE	AMOUNT
Department of Transportation Fund (2116); Engineering Design: Streets & Structures Organization (92242); Street Construction Account (57411); Project G426910	\$559,510.00
Measure B Fund (2211), Engineering Design: Streets & Structures Organization (92242); Street Construction Account (57411); Project G426920	\$158,490.00

### 3. FISCAL IMPACT:

The City successfully sought and obtained federal fund in the amount of \$559,510.00, for seismic retrofit design of Adeline Street Bridge. The required local match is \$158,490.00 and will be provided by Measure B funds.

### PAST PERFORMANCE, EVALUATION AND FOLLOW-UP

Biggs Cardosa Associates, Inc. has performed satisfactorily in past projects. An evaluation for this consultant for a recently completed project is attached as *Attachment D*.

### SUSTAINABLE OPPORTUNITIES

*Economic:* The project will generate business tax, sales tax, and other revenues for the City by those firms who work on the project.

*Environmental:* Environmental factors and opportunities will be considered and incorporated into the project design to the extent feasible. Consultants will be required to consider the use of recycled material in the products specified and integrate other environmental opportunities, waste reduction and energy conservation.

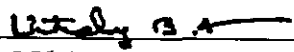
*Social Equity:* The project will improve the safety of the bridge thus benefiting the entire community as one.

### CEQA

The project is federally funded and per Federal Highway Administration (FHWA) requirement, the National Environmental Policy Act (NEPA) requirements will need to be adhered to. As part of the RFP, the consultant will meet with Caltrans Local Assistance staff to identify any studies needed as part of NEPA requirements. Based on the nature of the project, it is anticipated that the project will have no significant effect on the human environment and, therefore, an environmental impact statement is not anticipated to be required.

For questions regarding this report, please contact Gus Amirzehni, Engineering Design and Right-of-Way Manager, 510-238-6601.

Respectfully submitted,

  
VITALY B. TROYAN, P.E.  
Director, Public Works Agency

Reviewed by:  
Michael Neary, P.E., Assistant Director,  
PWA, Department of Engineering and Construction

Reviewed by:  
Gus Amirzehni, P.E., Engineering Design and R.O.W.  
Manager

Prepared by:  
Jaime Heredia, P.E., Supervising Civil Engineer  
Engineering Design and R.O.W. Management Division

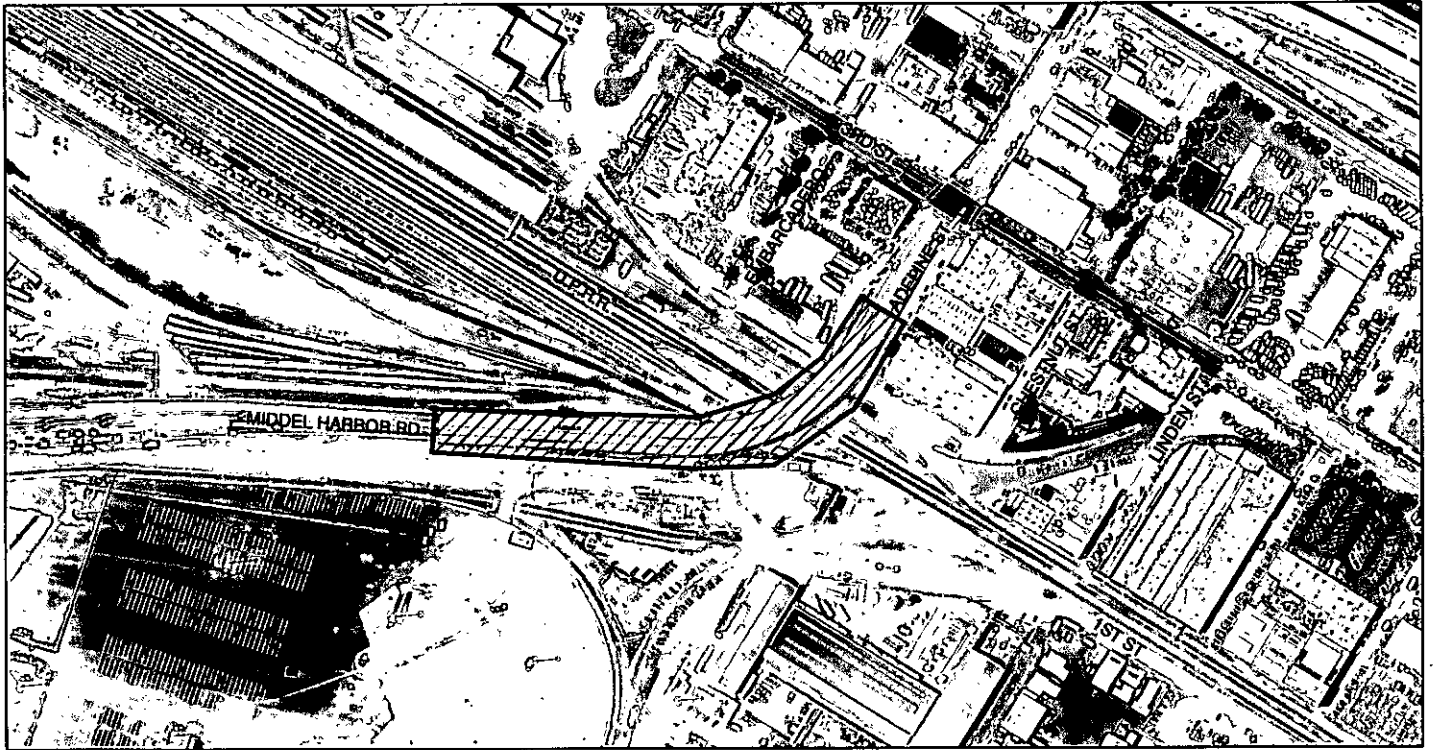
Attachments:

- Attachment A - Project Location Map
- Attachment B - List of Bidders and Project Construction Schedule
- Attachment C - Contracts & Compliance Unit Compliance Evaluation
- Attachment D - Contractor's Evaluation Report on past project

ATTACHMENT A

ADELINE STREET SEISMIC RETROFIT

FEDERAL PROJECT NO. BHLO-5012 (103)  
CITY PROJECT NO. G426920

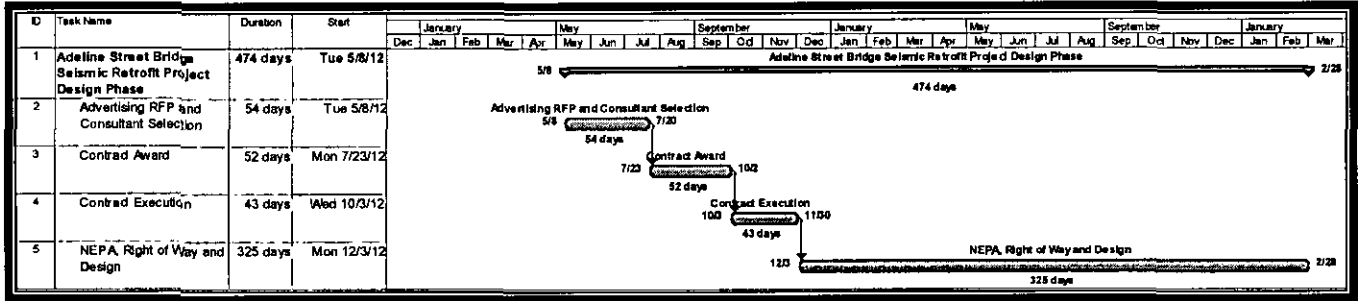


**LOCATION MAP**

NOT TO SCALE

LIMIT OF WORK 

# Attachment B



# Memo

## City Administrator's Office

Contracts and Compliance Unit

**To:** Mohammed Barati, Civil Engineer  
**From:** Vivian Inman, Contract Compliance Officer  
**Through:** Deborah Barnes – Manager, Contracts & Compliance Unit *Deborah Barnes*  
 Shelley Darensburg - Sr. Contract Compliance Officer  
**CC:** Calvin Hao, PWA Contracts  
**Date:** June 18, 2012  
**Re:** RFP to Provide Design and Construction Support Services for the Adeline Street Overhead Seismic Retrofit (Under-utilized Business Enterprise Project)

The City Administrator's Office, Contracts and Compliance Unit, reviewed three (3) proposals in response to the above referenced project. Below is the outcome of the compliance evaluation for the Race Conscious Underutilized Disadvantaged Business Enterprise (UDBE) program and a preliminary review for compliance with the Equal Benefits Ordinance (EBO). There is a race conscious UDBE goal of 7.22% for this project.

Responsive		Proposed Participation				Earned Credits and Discounts			EBO Compliant? Y/N
Company Name	Original Bid Amount	RC UDBE Total	LBE	SLBE	Trucking	Total Credited participation	Earned Bid Discounts	Adjusted Bid Amount	
Biggs Cardosa Associates	NA	15.00%	85.00%	15.00%	NA	NA	NA	NA	Y
Creegan + D'Angelo	NA	40.00%	10.00%	20.00%	NA	NA	NA	NA	N
URS Corporation	NA	7.22%	0.00%	0.00%	NA	NA	NA	NA	Y

Comments: As noted above, all firms exceeded the minimum 7.22% RC UDBE participation goals. The firm is EBO compliant.

Non-Responsive		Proposed Participation				Earned Credits and Discounts			EBO Compliant? Y/N
Company Name	Original Bid Amount	RC UDBE Total	LBE	SLBB	Trucking	Total Credited participation	Earned Bid Discounts	Adjusted Bid Amount	
NA	NA	NA	NA	NA	NA	NA	NA	NA	NA

Comments: There were no non-responsive firms.

Should you have any questions, you may contact Vivian Inman at (510) 238-6261.





**City Administrator's Office**  
**Contracts and Compliance Unit**

**PROJECT COMPLIANCE EVALUATION FOR:**

Professional Services Under-Utilized Disadvantaged Business Enterprise (UDBE)

**PROJECT NO.:**

**PROJECT NAME:** RFP to Provide Design and Construction Support Services for the Adeline Street Overhead Seismic Retrofit

**CONTRACTOR:** Biggs Cardosa Associates

**Engineer's Estimate:**

<u>Engineer's Estimate:</u>	<u>Contractors' Bid Amount</u>	<u>Over/Under Engineer's Estimate</u>
NA	NA	NA
<u>Discounted Bid Amount:</u>	<u>Amt. of Bid Discount</u>	<u>Discount Points:</u>
N/A	N/A	N/A

- |                                                         |               |
|---------------------------------------------------------|---------------|
| 1. Did the RC UDBE Program apply?                       | <b>YES</b>    |
| a) Race Conscious?                                      | <b>YES</b>    |
| b) Race Neutral                                         | <b>YES</b>    |
| 2. Did the contractor meet the RC UDBE goal of 7.22%    | <b>YES</b>    |
| <hr/>                                                   |               |
| a) % of RC UDBE participation                           | <b>15.00%</b> |
| b) % of RN DBE participation                            | <b>15.00%</b> |
| c) % of LBE participation                               | <b>85.00%</b> |
| d) % of SLBE participation                              | <b>15.00%</b> |
| 3. Was Good Faith Effort (GFE) Documentation submitted? | <b>NO</b>     |
| 5. Did the contractor receive bid discounts?            | <b>N/A</b>    |
| (If yes, list the percentage received)                  | <b>N/A</b>    |
| 6. Additional Comments.                                 |               |

7. Date evaluation completed and returned to Contract 6/18/2012

**Reviewing Officer:**

*Vivian [Signature]*

**Date:** 6/18/2012

**Approved By:**

*Shelley [Signature]*

**Date:** 6/18/2012

### Biggs Cardosa Associates

Project Name: RFP to Provide Design and Construction Support Services for the Adeline Street Overhead Seismic Retrofit

Project.No.:		Engineer's Est.					Under/Over Engineer's Est.				Certified DBE/WBE			
Discipline	Prime & Subs	Location	Cart. Status	LBE %	SLBE %	Total LBE/SLBE %	DBE %	RC UDBE %	Total %	Ethn.	OBE	RC UDBE	WBE	
														PRIME
Civil Eng. Surv. UU., Traffic	BKF Engineers	Oakland	UB	20.00%		20.00%			20.00%	C				
Geotechnical, Phase 1 SA	Parikh Consultants	Oakland	OB		15.00%	15.00%	15.00%	15.00%	15.00%	AP	15.00%	15.00%		
Reprots/permitting	Circlepoint	Oakland	UB	8.00%		8.00%			8.00%	C				
<b>Project Totals</b>				85.00%	15.00%	100.00%	15.00%	15.00%	100.00%		15.00%	15.00%	0.00%	
Legend										Ethnicity AA = African American AI = Asian Indian AP = Asian Pacific C = Caucasian H = Hispanic NA = Native American O = Other NL = Not Listed				
UB = Unaffiliated Business CB = Certified Business OBE = Disadvantaged Business Enterprise WBE = Woman Business Enterprise UDBE = Underutilized Disadvantaged Business Enterprise														



**City Administrator's Office**  
**Contracts and Compliance Unit**

**PROJECT COMPLIANCE EVALUATION FOR :**

Professional Services Under-Utilized Disadvantaged Business Enterprise (UDBE)

**PROJECT NO.:**

**PROJECT NAME:** RFP to Provide Design and Construction Support Services for the Adeline Street Overhead Seismic Retrofit

**CONTRACTOR:** Creegan + D'Angelo

<u>Engineer's Estimate</u>	<u>Contractors' Bid Amount</u>	<u>Over/Under Engineer's Estimate</u>
NA	NA	NA
<u>Discounted Bid Amount:</u>	<u>Amt. of Bid Discount</u>	<u>Discount Points:</u>
N/A	N/A	N/A

1. Did the RC UDBE Program apply? **YES**  
 a) Race Conscious? **YES**  
 b) Race Neutral **YES**

2. Did the contractor meet the RC UDBE goal of 7.22% **NO**  
 a) % of RC UDBE participation **40.00%**  
 b) % of RN DBE participation **40.00%**  
 c) % of LBE participation **10.00%**  
 d) % of SLBE participation **0.00%**

3. Was Good Faith Effort (GFE) Documentation submitted? **NO**

5. Did the contractor receive bid discounts? **N/A**  
 (If yes, list the percentage received) **N/A**

6. Additional Comments.  
**Firm failed to submit a completed Schedule R, therefore compliance could not be determined.**

7. Date evaluation completed and returned to Contract **6/18/2012**

**Reviewing Officer:**

*[Signature]*

**Date:** 6/18/2012

**Approved By:**

*Shelley Danenberg*

**Date:** 6/18/2012

## Creegan + D'Angelo

**Project Name:** RFP to Provide Design and Construction Support Services for the Adeline Street Overhead Seismic Retrofit

Project No.:		Engineer's Est.					Under/Over Engineer's Est.				Certified DBE/WBE			
Discipline	Prime & Subs	Location	Cert Status	LBE %	SLBE %	Total LBE/SLBE %	DBE %	RC UDBE %	Total %	Ethn.	DBE	RC UDBE	WBE	
PRIME	Creegan + D'Angelo	San Francisco	UB						50.00%	AA				
Geotechnical Engineering	Earth Mechanics, Inc.	Oakland	CB	10.00%		10.00%	10.00%	10.00%	10.00%	AP	10.00%	10.00%		
Environmental Engineering	David J. Powers & Associates	San Jose	CB				5.00%	5.00%	5.00%	C	5.00%	5.00%	5.00%	
Surveying & Mapping	Mountain Pacific Surveys	Fairfield	UB						5.00%	C				
Railroad Engineering	Karl Schaarsmidt	Lafayette	UB						5.00%	C				
Independent Check	OPAC Consulting Engineers	San Francisco	CB				5.00%	5.00%	5.00%	AP	5.00%	5.00%		
Site Engineering	F.E. Jordan Associates, Inc.	Oakland	CB		20.00%	20.00%	20.00%	20.00%	20.00%	AA	20.00%	20.00%		
<b>Project Totals</b>				10.00%	20.00%	30.00%	40.00%	40.00%	100.00%		40.00%	40.00%	5.00%	
							DBE %	RC UDBE %	Total %	<b>Ethnicity</b> AA = African American AI = Asian Indian AP = Asian Pacific C = Caucasian H = Hispanic NA = Native American O = Other NL = Not Listed				
<b>Legend</b>	UB = Uncertified Business CB = Certified Business DBE = Disadvantaged Business Enterprise WBE = Women Business Enterprise UDBE = Underutilized Disadvantaged Business Enterprise													



City Administrator's Office  
Contracts and Compliance Unit

PROJECT COMPLIANCE EVALUATION FOR :

Professional Services Under-Utilized Disadvantaged Business Enterprise (UDBE)

PROJECT NO.:

PROJECT NAME: RFP to Provide Design and Construction Support Services for the Adeline Street Overhead Seismic Retrofit

CONTRACTOR: URS Corporation

Engineer's Estimate:

<u>NA</u>	<u>Contractors' Bid Amount</u>	<u>Over/Under Engineer's Estimate</u>
<u>NA</u>	<u>NA</u>	<u>NA</u>
<u>Discounted Bid Amount:</u>	<u>Amt. of Bid Discount</u>	<u>Discount Points:</u>
<u>N/A</u>	<u>N/A</u>	<u>N/A</u>

- |                                                         |               |
|---------------------------------------------------------|---------------|
| 1. Did the RC UDBE Program apply?                       | <u>YES</u>    |
| a) Race Conscious?                                      | <u>YES</u>    |
| b) Race Neutral                                         | <u>YES</u>    |
| 2. Did the contractor meet the RC UDBE goal of 7.22%    | <u>YES</u>    |
| a) % of RC UDBE participation                           | <u>7.22%</u>  |
| b) % of RN DBE participation                            | <u>11.17%</u> |
| c) % of LBE participation                               | <u>0.00%</u>  |
| d) % of SLBE participation                              | <u>0.00%</u>  |
| 3. Was Good Faith Effort (GFE) Documentation submitted? | <u>NO</u>     |
| 5. Did the contractor receive bid discounts?            | <u>N/A</u>    |
| (If yes, list the percentage received)                  | <u>N/A</u>    |
| 6. Additional Comments.                                 |               |

7. Date evaluation completed and returned to Contract 6/18/2012

Reviewing Officer: *Vivian Stone*

Date: 6/18/2012

Approved By: *Shelley Darenburg*

Date: 6/18/2012

## URS Corporation

Project Name: RFP to Provide Design and Construction Support Services for the Adeline Street Overhead Seismic Retrofit

Project No.: C316230		Engineer's Est.						Under/Over Engineer's Est.					
Discipline	Prime & Subs	Location	Cert. Status	LBE %	SLBE %	Total LBE/SLBE %	OBE %	RC UDBE %	Total %	Certified DBE/WBE			
										Ethn.	DBE	RC UDBE	WBE
PRIME	URS Corporation	Oakland	UB						88.83%	C			
Structural Engineering Support	AMC Consulting Engineers	Oakland	CB				3.61%	3.61%	3.61%	AP	3.61%	3.61%	
Support	Earthquake & Structures, Inc.	Oakland	UB				3.95%		3.95%	AI	3.95%		
Civil Engineering/Surveying	Telamon Engineering Consultants	Oakland	CB				3.61%	3.61%	3.61%	AP	3.61%	3.61%	
<b>Project Totals</b>				0.00%	0.00%	0.00%	11.17%	7.22%	100.00%		11.17%	7.22%	0.00%
							DBE %	RC UDBE %	Total %	<b>Ethnicity</b> AA = African American AI = Asian Indian AP = Asian Pacific C = Caucasian H = Hispanic NA = Native American O = Other NL = Not Listed			
<b>Legend</b>		UB = Uncertified Business CB = Certified Business DBE = Disadvantaged Business Enterprise WBE = Women Business Enterprise UDBE = Underutilized Disadvantaged Business Enterprise											



CITY OF OAKLAND

PROJECT DELIVERY DIVISION • 250 FRANK H. OGAWA PLAZA, SUITE 4344 • OAKLAND, CALIFORNIA 94612  
Public Works Agency (510) 238-3051  
Department of Engineering and Construction FAX (510) 238-6633  
TDD (510) 839-6451

**SCHEDULE L1**  
**CONSULTANT PERFORMANCE EVALUATION FORM**

Date of Evaluation: 2/13/2012

Consultant Name: Biggs Cardosa

Consultant Address: 1330 Broadway, Suite 730, Oakland, CA 94612

Consultant Lead Project Manager: Troy Swenson

Type of Services/Work Provided: Bridge Design and Construction Support

Final Value of Consultant Contract: \$129,000.00

Duration of Consultant Contract (Start to end dates): 9/10/2009 to 8/5/2011

Project Complexity: Standard

Consultant's Signature: \_\_\_\_\_

(Troy Swenson)

*The Consultant's Performance Evaluation has been communicated to the Consultant. Signature does not necessarily signify consent or agreement.*

Project Name: Rehabilitation of Adeline Street Bridge

Project No: C319710

Final Value of Construction Contract: \$641,822.00

City Construction Resident Engineer: (David Ng) (Ex. 7267)

City Project Manager/Evaluator Signature: \_\_\_\_\_

(Mohammad Barati)

(Ex. 7280)

Reviewed and Approved By (with phone #): \_\_\_\_\_

(Naima Heredia)

(Ex. 2293)

Rating Guidelines
-------------------

<b>Poor</b>	<i>Work required extensive revisions, included numerous &amp; significant errors; Consultant was unable or unwilling to perform consistently, required an inordinate amount of supervision, and/or failed to meet professional standards/project objectives.</i>
<b>Needs to Improve</b>	<i>Performance was marginal; work required more review and included more errors than would normally be anticipated; level of service or expertise below average.</i>
<b>Average</b>	<i>Performance and work were satisfactory; services provided were at least of industry standard; no significant errors or problems; professional service objectives met.</i>
<b>Excellent</b>	<i>Performance was clearly above standard; expectations exceeded; objectives were met with an added level of service and/or with a higher level of professional expertise.</i>

Questions	Poor	Needs to Improve	Average	Excellent	Not Applicable
1. Quality of Design/Work	<input type="checkbox"/>	<input type="checkbox"/>	<input type="checkbox"/>	<input checked="" type="checkbox"/>	<input type="checkbox"/>
2. Ability to meet the Project Objectives	<input type="checkbox"/>	<input type="checkbox"/>	<input type="checkbox"/>	<input checked="" type="checkbox"/>	<input type="checkbox"/>
3. Knowledge, Expertise, and State-of –the Art Technologies	<input type="checkbox"/>	<input type="checkbox"/>	<input type="checkbox"/>	<input checked="" type="checkbox"/>	<input type="checkbox"/>
4. Innovation of Design/Work	<input type="checkbox"/>	<input type="checkbox"/>	<input type="checkbox"/>	<input checked="" type="checkbox"/>	<input type="checkbox"/>
5. Ability to Promptly React and Respond to Problems/Issues	<input type="checkbox"/>	<input type="checkbox"/>	<input type="checkbox"/>	<input checked="" type="checkbox"/>	<input type="checkbox"/>
6. Ability to maintain to the Project Schedule and adhere to Time Commitments	<input type="checkbox"/>	<input type="checkbox"/>	<input type="checkbox"/>	<input checked="" type="checkbox"/>	<input type="checkbox"/>
7. Ability to maintain to the Project Budget	<input type="checkbox"/>	<input type="checkbox"/>	<input type="checkbox"/>	<input checked="" type="checkbox"/>	<input type="checkbox"/>
8. Accuracy of Cost Estimating	<input type="checkbox"/>	<input type="checkbox"/>	<input checked="" type="checkbox"/>	<input type="checkbox"/>	<input type="checkbox"/>
9. Constructibility of the Design/Work	<input type="checkbox"/>	<input type="checkbox"/>	<input type="checkbox"/>	<input checked="" type="checkbox"/>	<input type="checkbox"/>
10. Quality of Construction Administration Services	<input type="checkbox"/>	<input type="checkbox"/>	<input type="checkbox"/>	<input type="checkbox"/>	<input checked="" type="checkbox"/>
11. Accuracy and Timeliness of Billings and other Documents	<input type="checkbox"/>	<input type="checkbox"/>	<input type="checkbox"/>	<input checked="" type="checkbox"/>	<input type="checkbox"/>
12. Ability to Manage and Coordinate Sub-Consultants	<input type="checkbox"/>	<input type="checkbox"/>	<input type="checkbox"/>	<input checked="" type="checkbox"/>	<input type="checkbox"/>
13. Knowledge and Expertise in Regulatory Requirements and in Procuring Required Permits	<input type="checkbox"/>	<input type="checkbox"/>	<input type="checkbox"/>	<input checked="" type="checkbox"/>	<input type="checkbox"/>
14. Ability to Communicate with the Community and to Make Presentations	<input type="checkbox"/>	<input type="checkbox"/>	<input type="checkbox"/>	<input type="checkbox"/>	<input checked="" type="checkbox"/>
<b>OVERALL RATING</b>	<input type="checkbox"/>	<input type="checkbox"/>	<input type="checkbox"/>	<input checked="" type="checkbox"/>	<input type="checkbox"/>

All Questions rated at "Poor" or "Needs to Improve" must be supplemented with comments:

Comments:

---

Notes:



Please save a PDF of signed document using this naming convention: Firm\_Project#\_date of eval and place in Evaluations folder in the Contract Services folder. *(Control+click onto the hyperlink)*

The Project Coordinator/Manager shall complete this evaluation form for each primary consultant within 60 days upon the completion of an individual project or assignment. Interim evaluations shall also be prepared for projects of a long duration (i.e. over one year) or if the consultant's performance merits notification of any deficiencies.

Information is to be submitted to and kept on file for five (5) years. A copy of the evaluation shall also be provided to the Consultant. These forms may be used, in part, as a reference to evaluate the Consultant for future City professional services contracts.

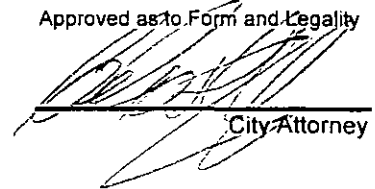
Consultants with an overall evaluation of "Poor" or "Needs to Improve" are given an opportunity to 1) appeal the evaluation to the agency deputy director, or the designee, and/or 2) append the evaluation with a one-page statement that explains or refutes the City's finding.

To the extent permitted by law, the City shall treat the evaluations as confidential information.

cc: PWA Contract Services – Evaluations

FILED  
OFFICE OF THE CITY CLERK  
OAKLAND

# OAKLAND CITY COUNCIL

  
City Attorney

2012 OCT 11 PM 2:02

RESOLUTION No. \_\_\_\_\_ C.M.S.

Introduced by Councilmember \_\_\_\_\_

RESOLUTION AUTHORIZING THE CITY ADMINISTRATOR TO ENTER INTO A PROFESSIONAL SERVICES AGREEMENT WITH BIGGS CARDOSA ASSOCIATES, INC., TO PROVIDE PROFESSIONAL ENGINEERING SERVICES FOR SEISMIC RETROFIT OF ADELINE STREET BRIDGE (PROJECT NO. G426910) FOR AN AMOUNT NOT TO EXCEED SEVEN HUNDRED EIGHTEEN THOUSAND DOLLARS (\$718,000.00) IN ACCORD WITH THE REQUEST FOR PROPOSAL (RFP) AND ITS AMENDMENT.

**WHEREAS**, the City of Oakland applied for and received the amount of \$559,510.00 Federal Highway Administration (FHWA), Highway Bridge Program (HBP) funds for the seismic retrofit design of Adeline Street Bridge, (Project No. G426910); and

**WHEREAS**, the local match for federal funding and contingency in the amount of \$158,490.00 is available in Measure "B" ACTIA Funds (2211) Organization (92242), Account (54411), Project No. G426920); and

**WHEREAS**, the project consists of investigation, preparation of NEPA studies, completion of construction documents and securing permit from Union Pacific and Port of Oakland for seismic retrofit construction of Adeline Street Bridge.

**WHEREAS**, professional design services are needed to design the project and extensive outreach effort to request proposals resulted in three responses; and

**WHEREAS**, Biggs Cardosa Associates, Inc. has submitted a proposal to provide full design services, including preparing plans, specifications, cost estimate, NEPA studies, permit documents from Union Pacific Rail Road and Port of Oakland, conducting meetings and provide services during bidding and construction phase; and

**WHEREAS**, Biggs Cardosa Associates, Inc. was chosen through the City's Request for Proposal (RFP) process as the top rated firm to provide the services; and

**WHEREAS**, the City Council finds that this contract is for services of a professional nature; and

**WHEREAS**, the City Council finds that this services under contract will be temporary; and

**WHEREAS**, the City Council finds and determines that the performance of this contract shall not result in the loss of employment or salary by any person having permanent status in the competitive services; now, therefore, be it,

**RESOLVED:** That the City Council hereby authorizes the City Administrator or her designee to enter into a professional service agreement with Biggs Cardosa Associates, Inc., to provide professional engineering and related design services for Seismic Retrofit Design of Adeline Street Bridge (Project No. G426920) for an amount not to exceed Seven Himdred Eighteen Thousand Dollars (\$718,000.00) in accord with the Request for Proposal and its Amendments; and be it

**FURTHER RESOLVED:** That should additional funds be received for the project, the City Administrator, or her designee, are hereby grant to accept and allocate the same for the purposes described above; and be it

**FURTHER RESOLVED:** That the City Council hereby authorizes the City Administrator or her designee to negotiate terms, execute, modify, amend or extend agreements provided such amendment or extensions shall be filed with the City Clerk's Office ; and be it

**FURTHER RESOLVED:** That a copy of the agreement will be on file in the City Clerk's Office and will be approved for form and legality by the Office of the City Attorney.

IN COUNCIL, OAKLAND, CALIFORNIA, \_\_\_\_\_.

PASSED BY THE FOLLOWING VOTE:

AYES - BROOKS, BRUNNER, DE LA FUENTE, KAPLAN, KERNIGHAN, NADEL, SCHAAF and PRESIDENT REID

NOES -

ABSENT -

ABSTENTION -

ATTEST: \_\_\_\_\_  
LaTonda Simmons  
City Clerk and Clerk of the Council  
of the City of Oakland, California